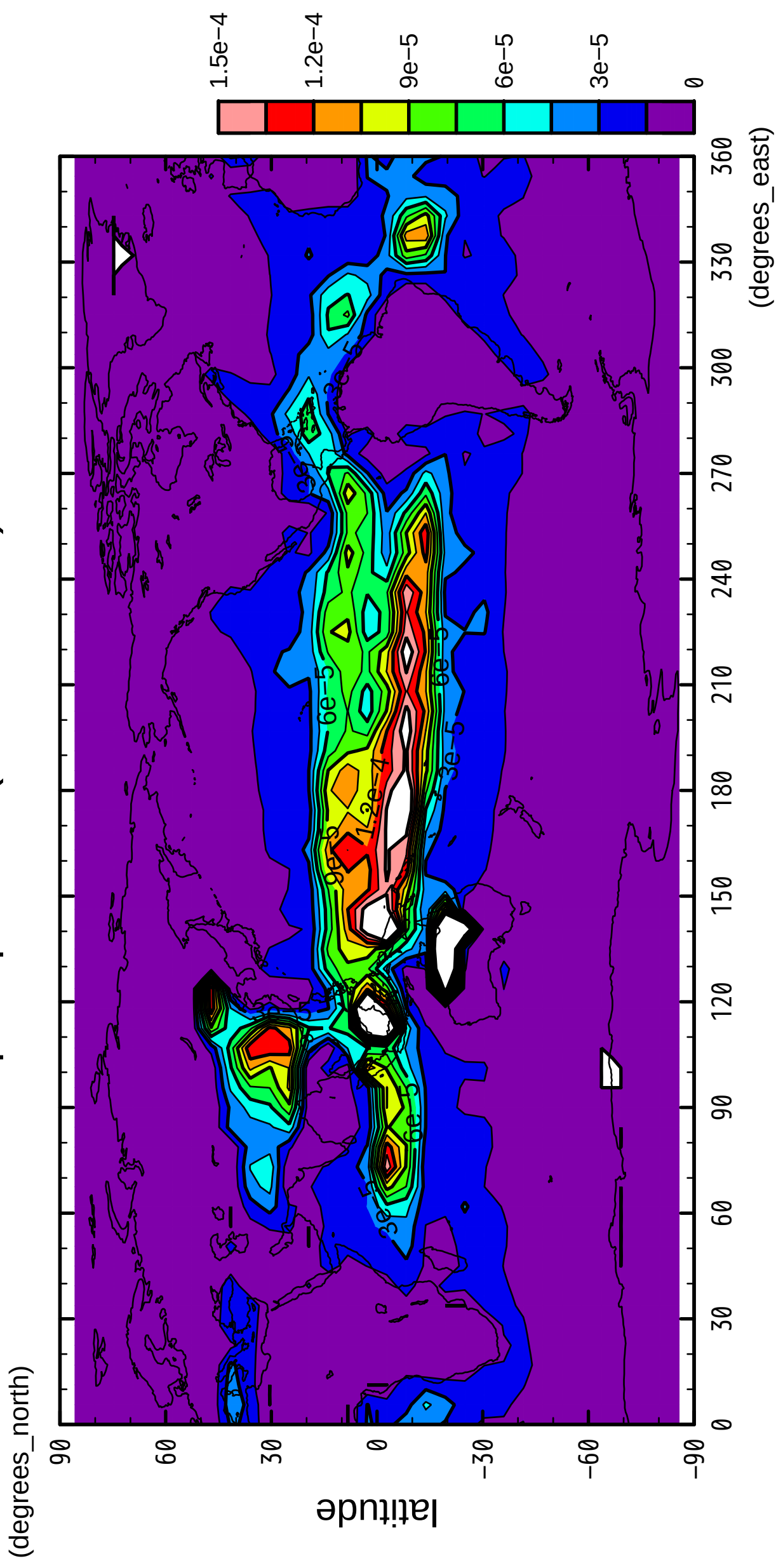


1/12

precipitation (rain + snow)

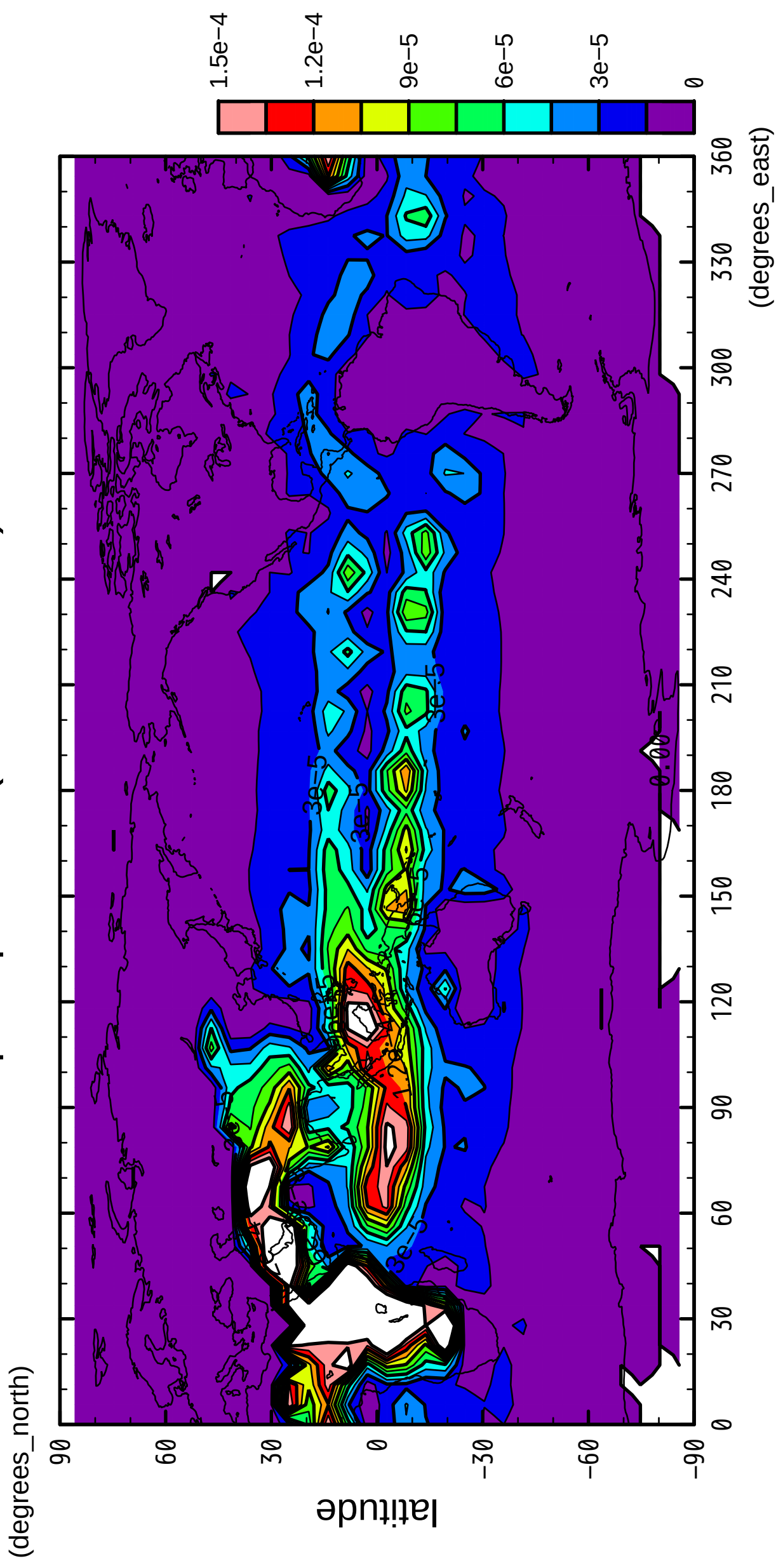


longitude

CONTOUR INTERVAL = 1.500E-05

2/12

precipitation (rain + snow)

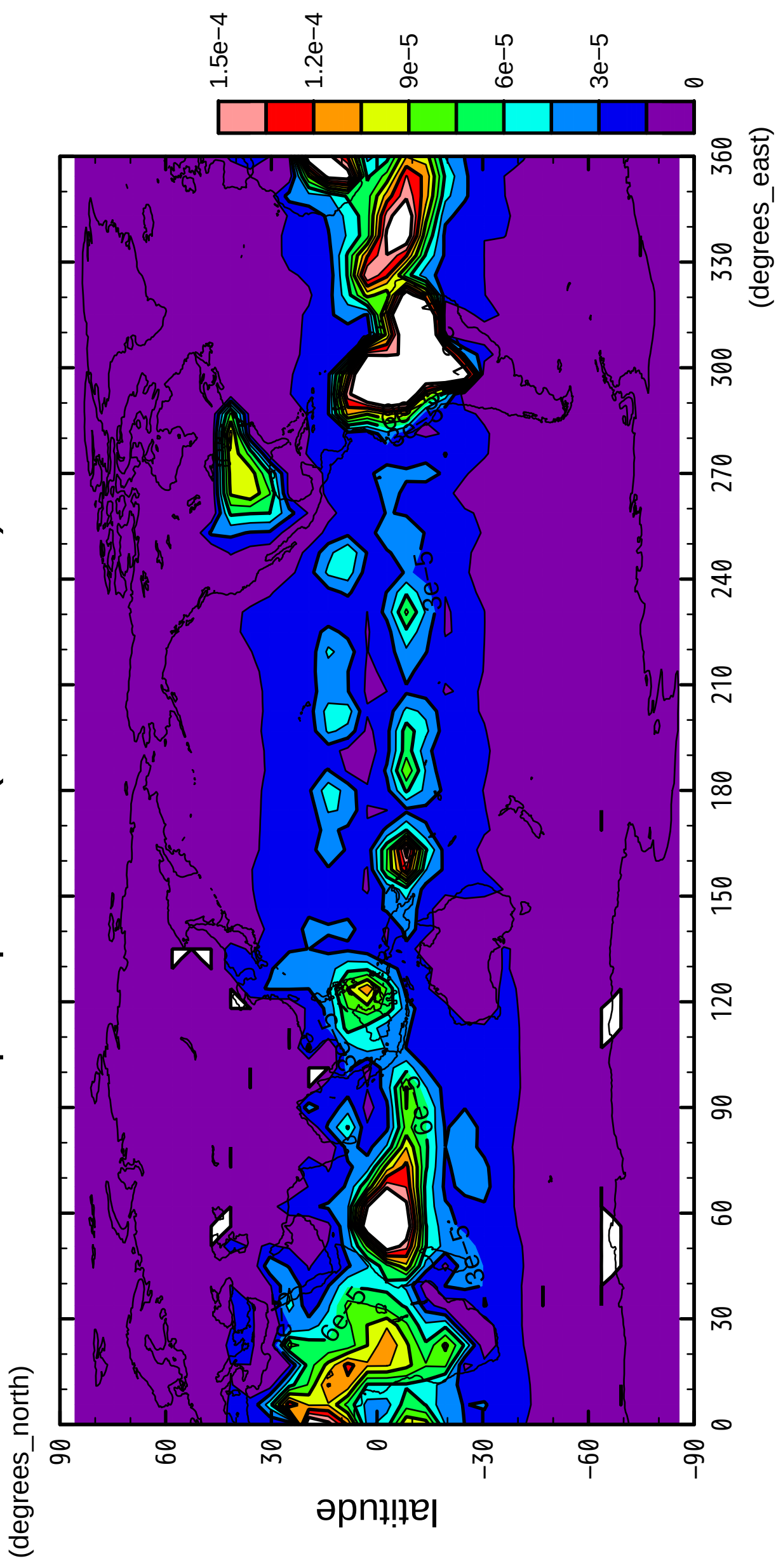


longitude

CONTOUR INTERVAL = 1.500E-05

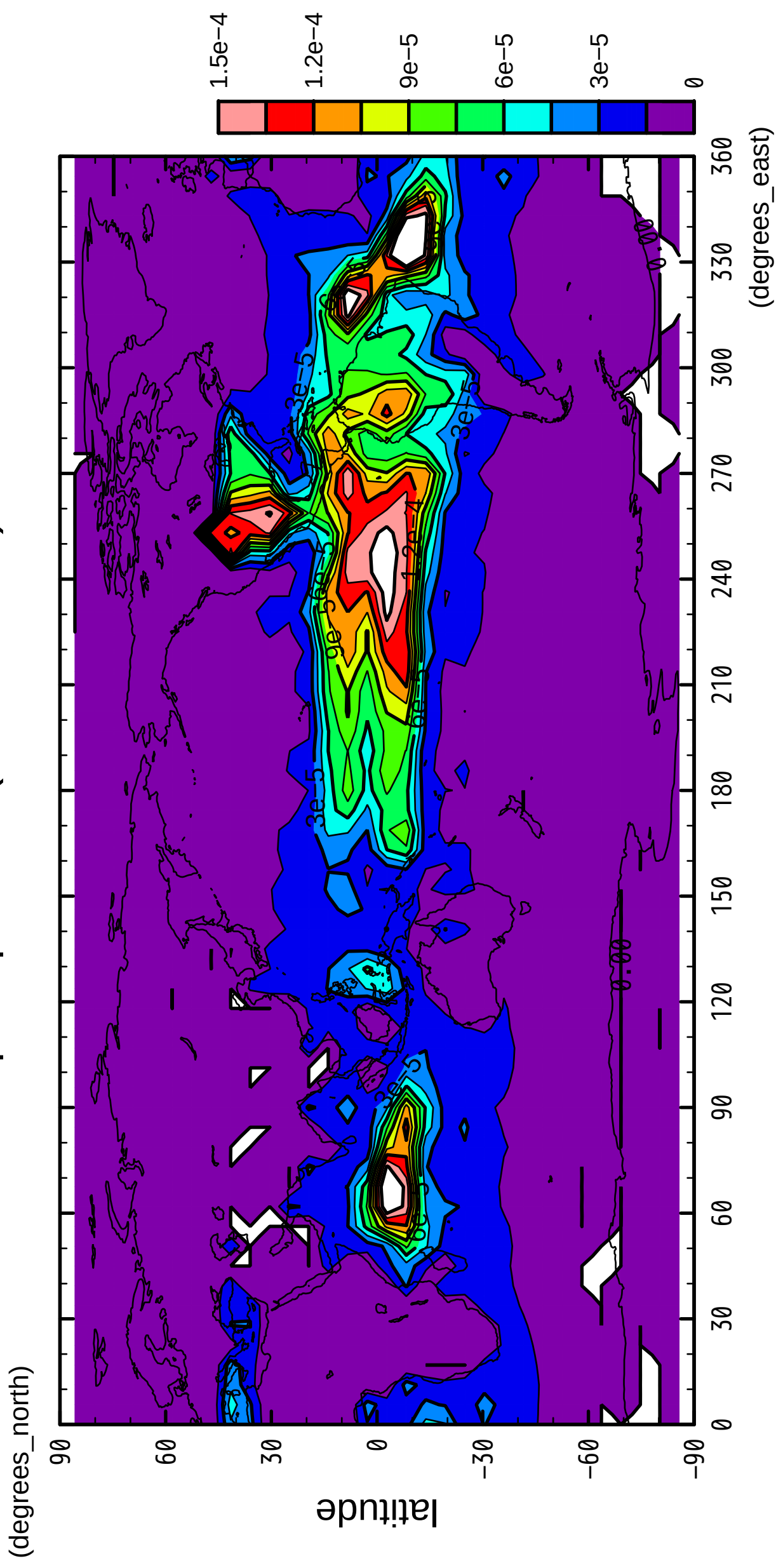
3/12

precipitation (rain + snow)



4/12

precipitation (rain + snow)

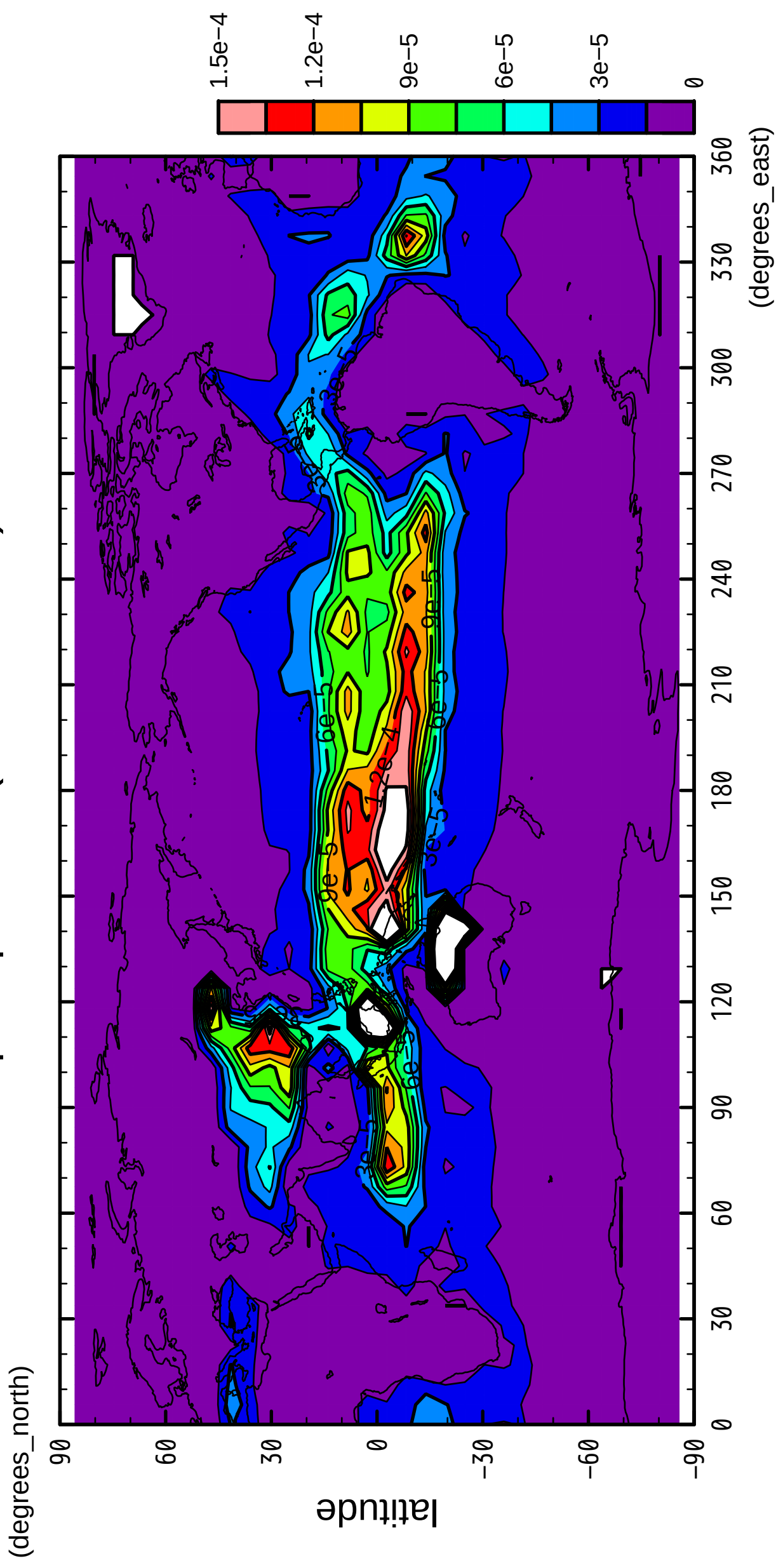


longitude

CONTOUR INTERVAL = 1.500E-05

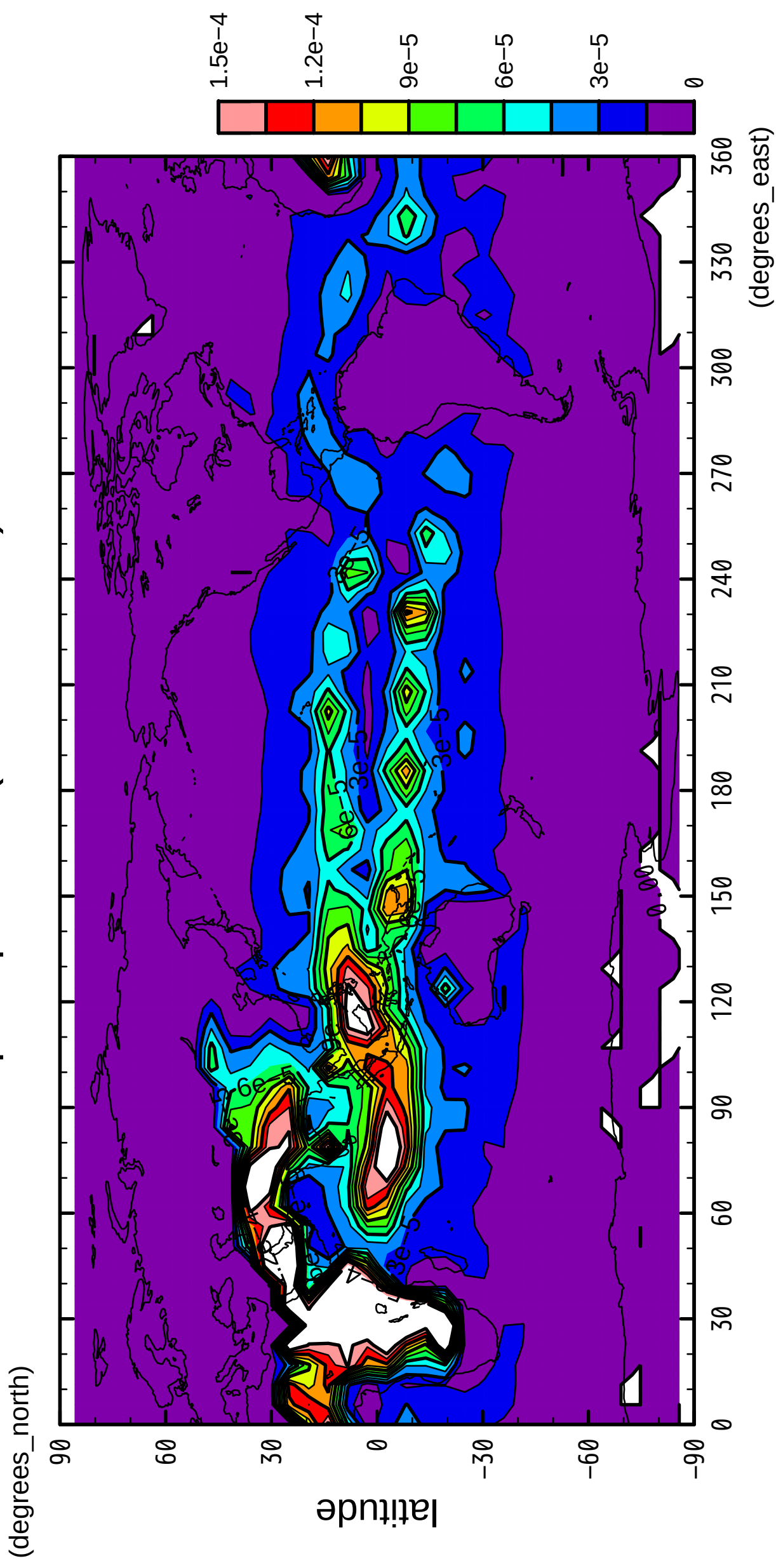
5/12

precipitation (rain + snow)



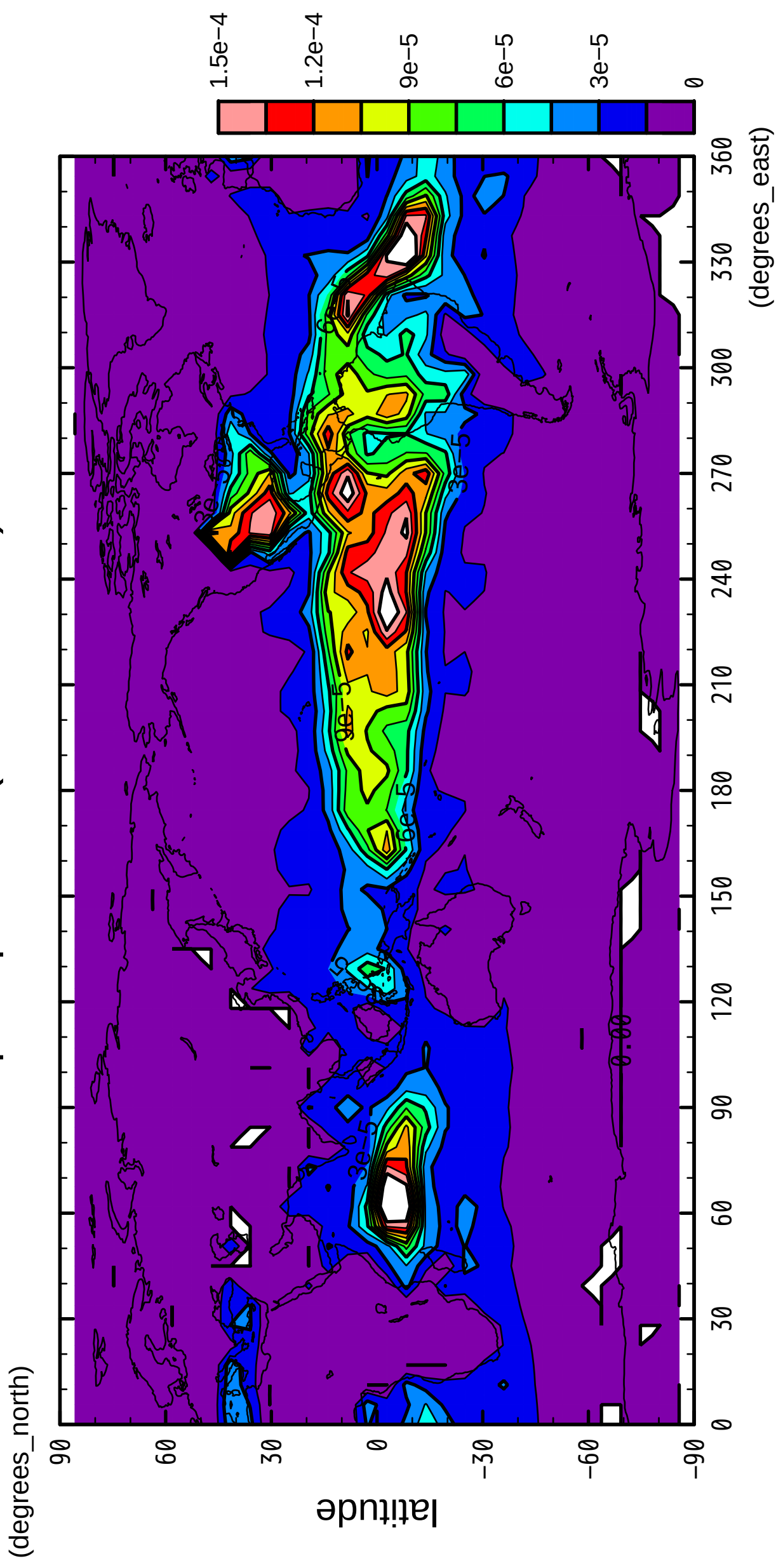
6/12

precipitation (rain + snow)



8/12

precipitation (rain + snow)

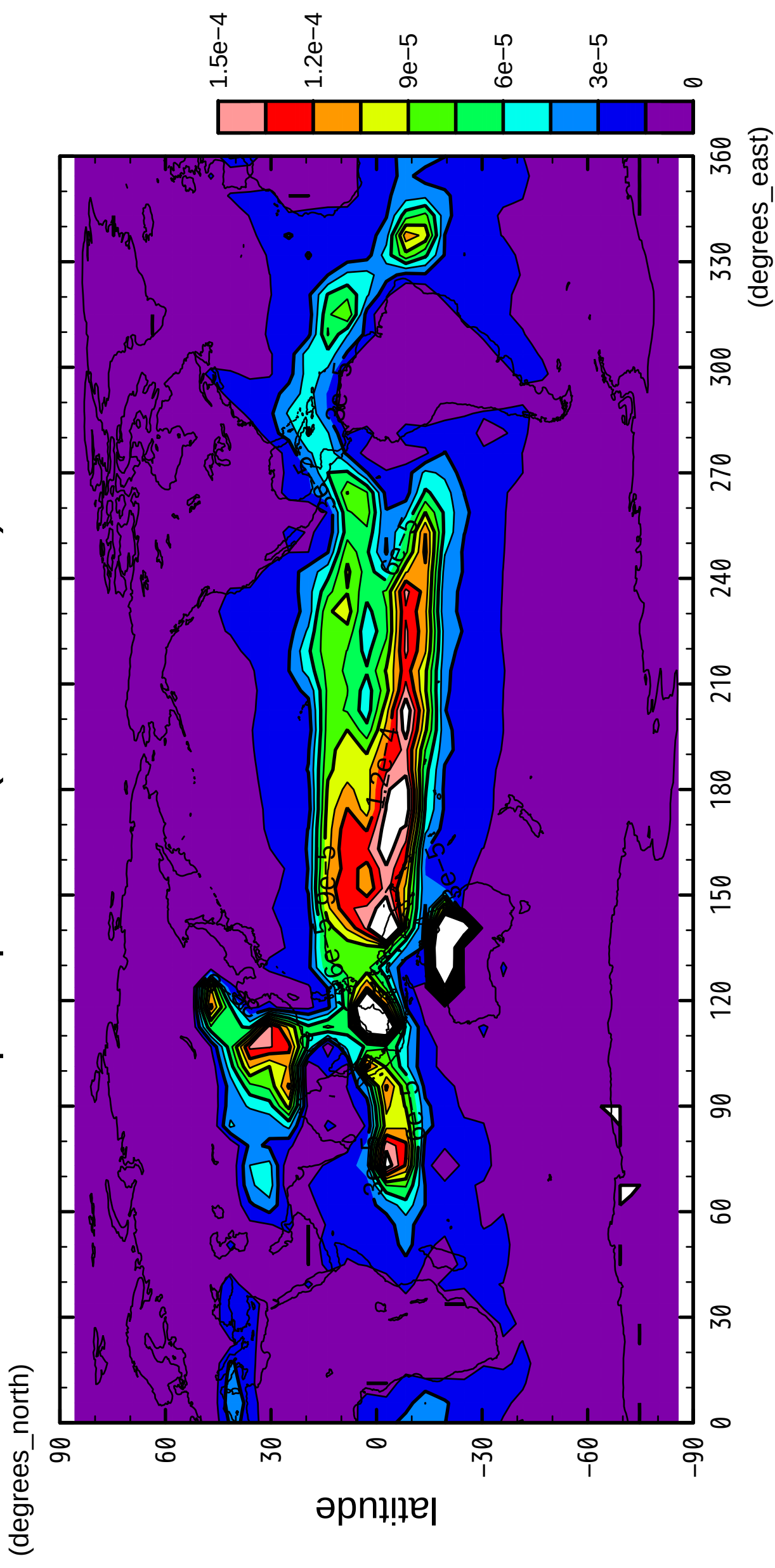


longitude

CONTOUR INTERVAL = 1.500E-05

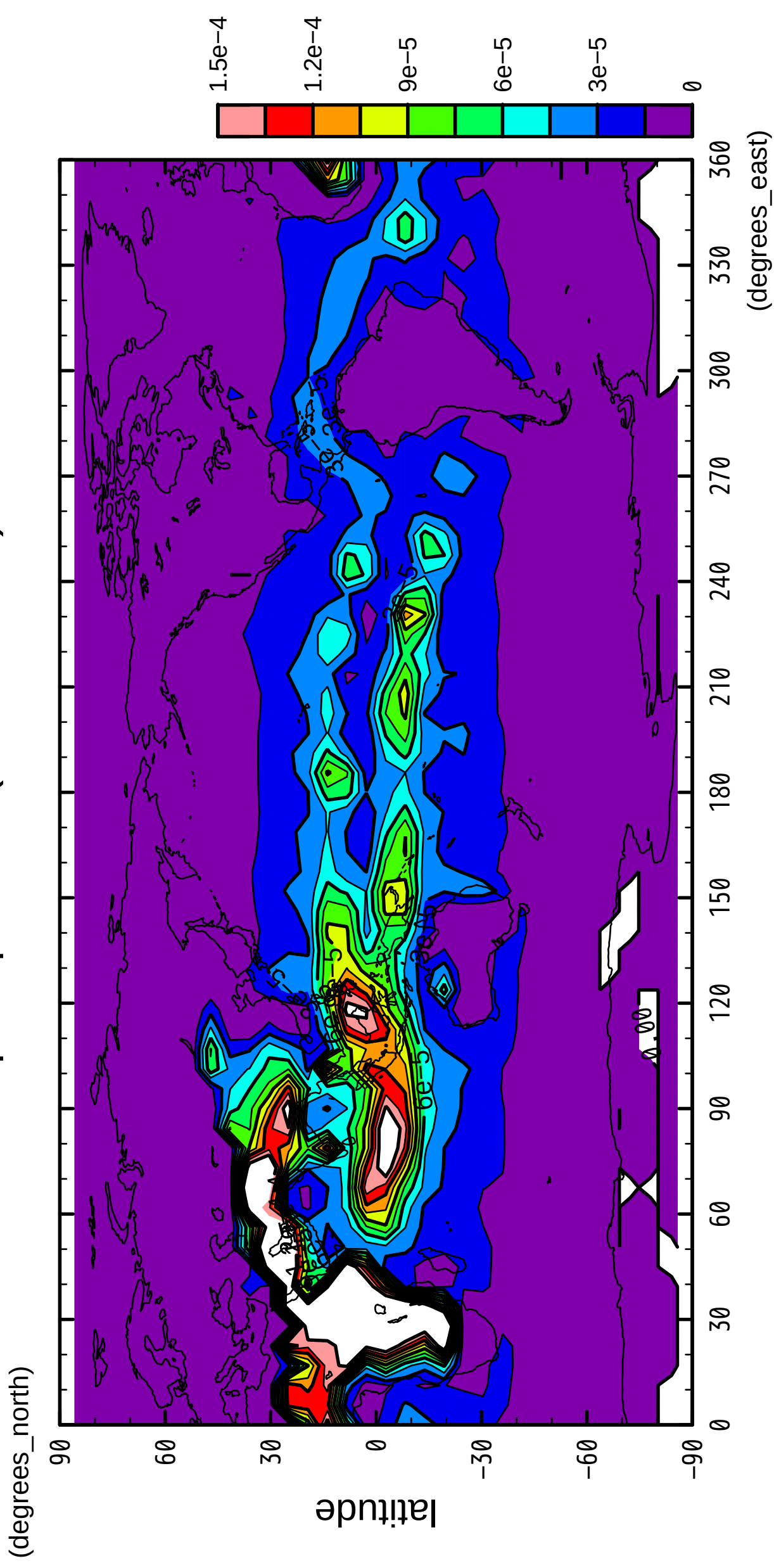
9/12

precipitation (rain + snow)



10/12

precipitation (rain + snow)

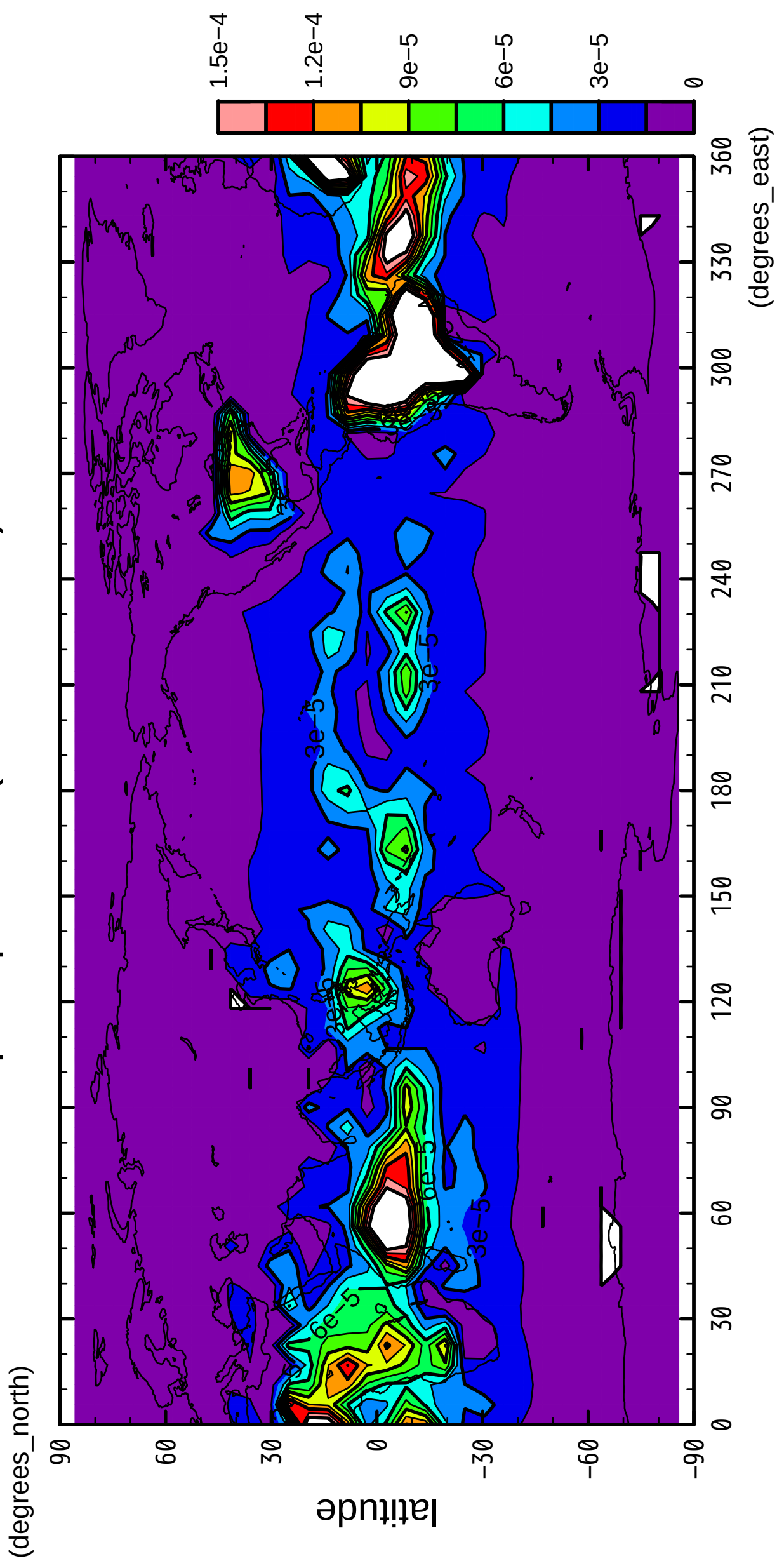


longitude

CONTOUR INTERVAL = 1.500E-05

11/12

precipitation (rain + snow)

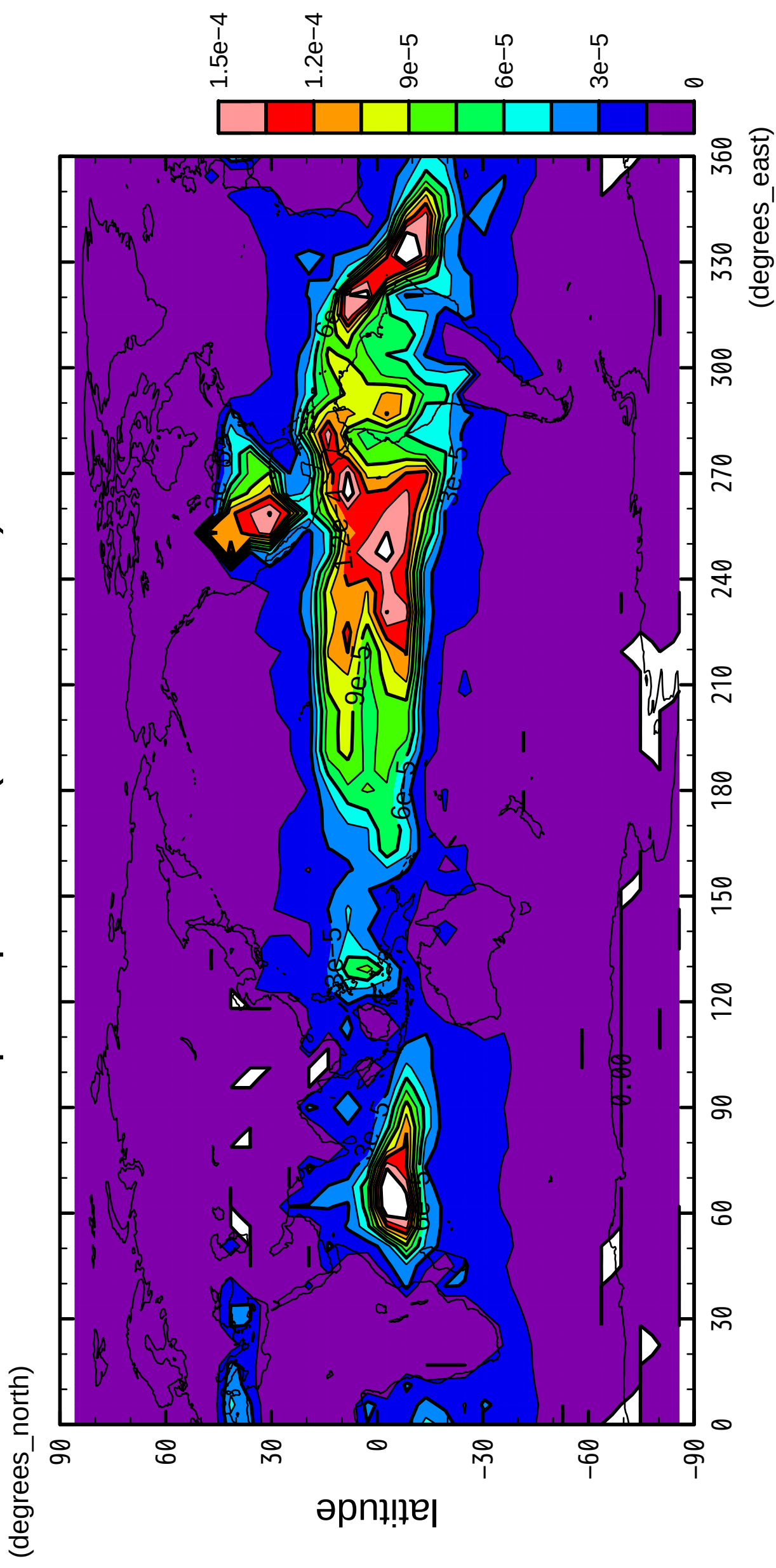


longitude

CONTOUR INTERVAL = 1.500E-05

12/12

precipitation (rain + snow)



longitude

CONTOUR INTERVAL = 1.500E-05