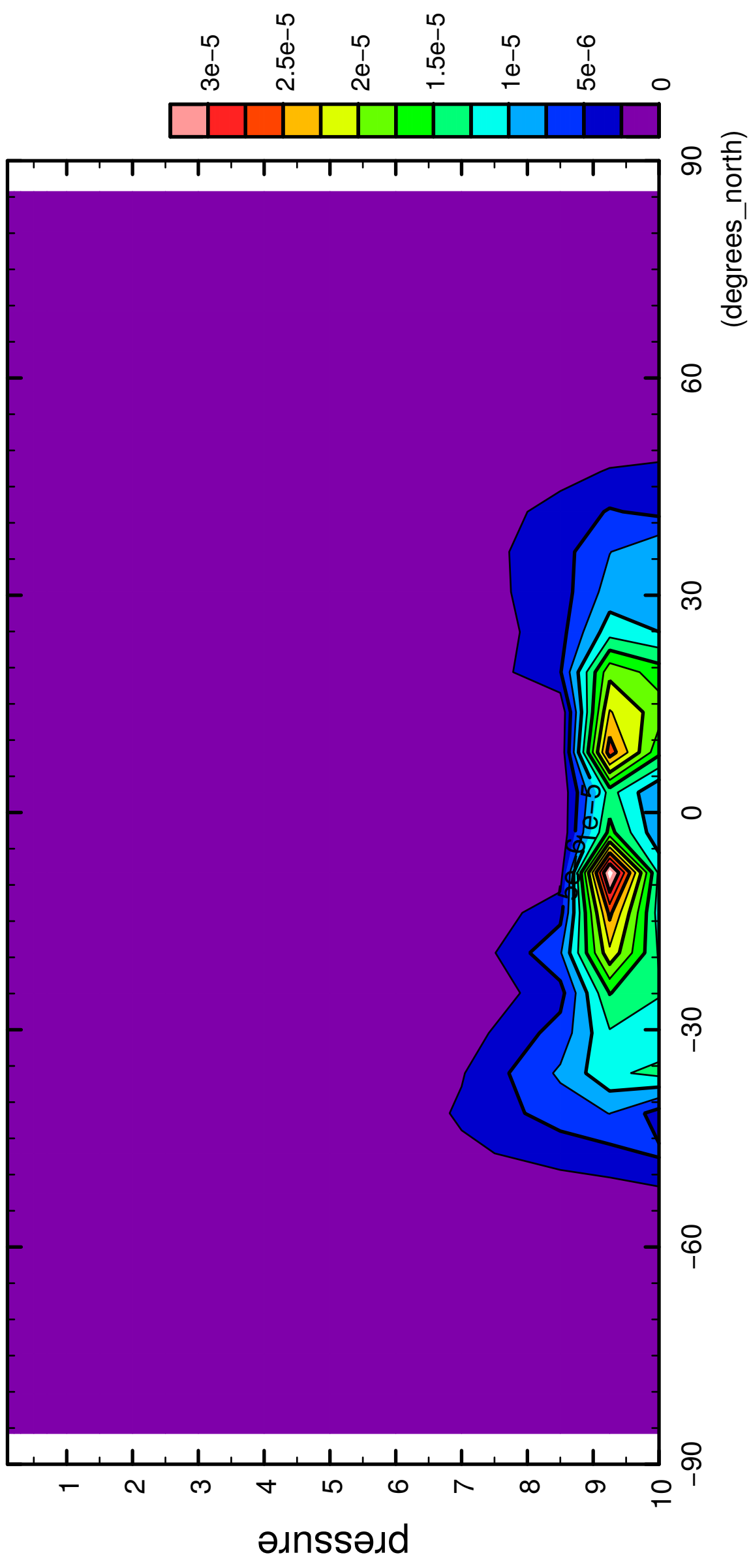


1/12

QH2OLiq

( $\times 10^4$  Pa)

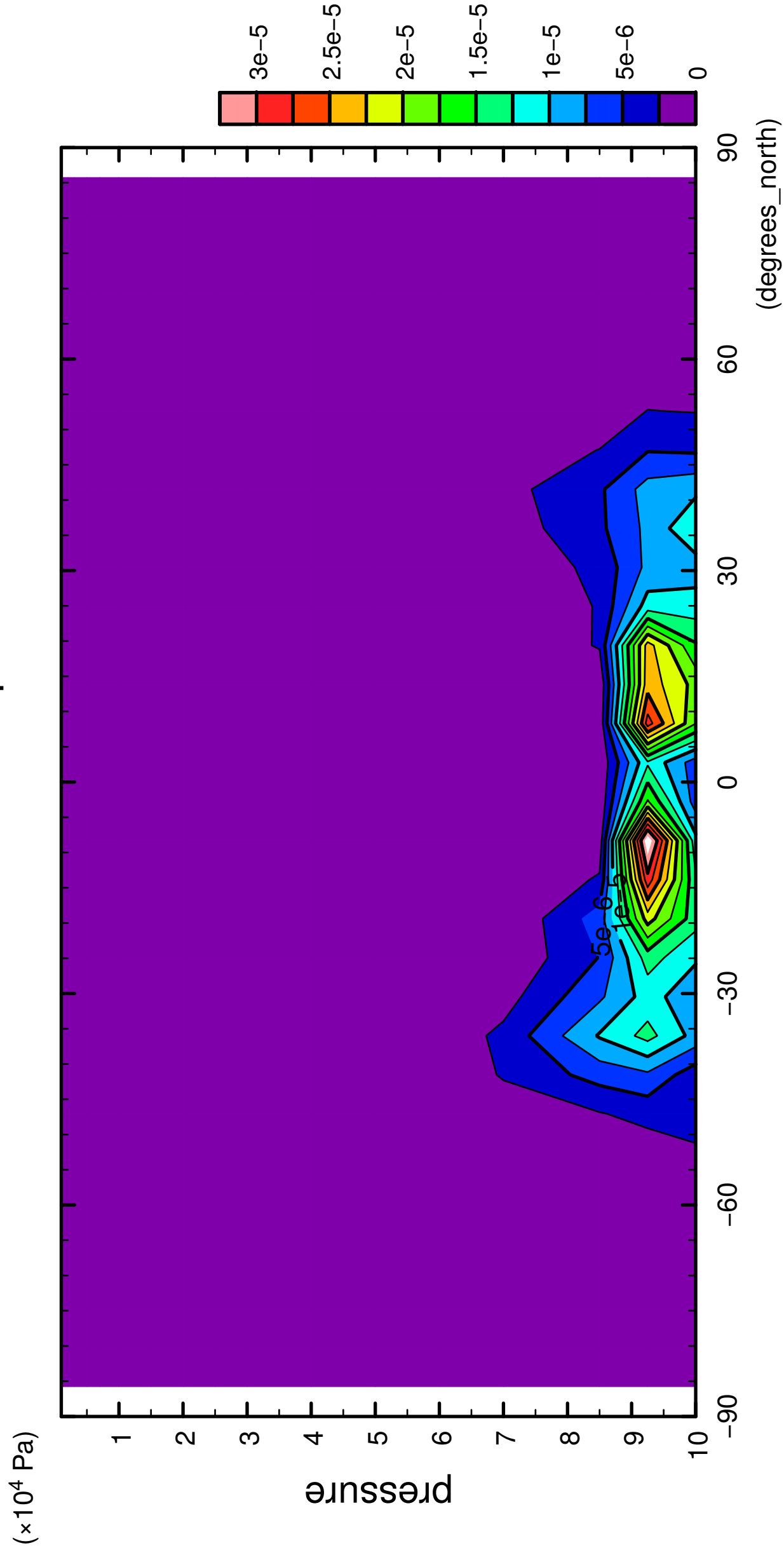


latitude

CONTOUR INTERVAL =  $2.500 \times 10^{-6}$

2/12

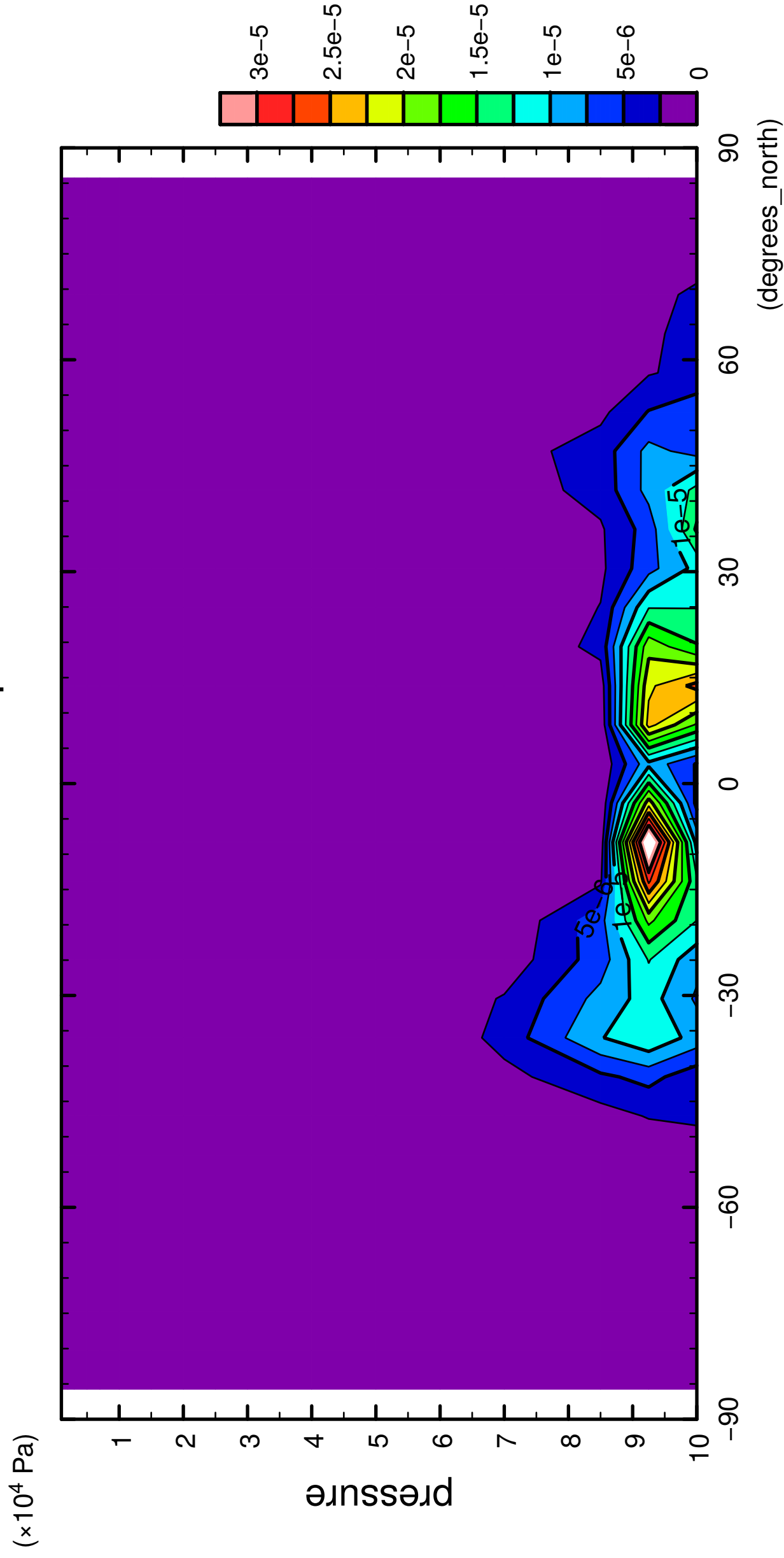
QH2OLiq



CONTOUR INTERVAL = 2.500E-06

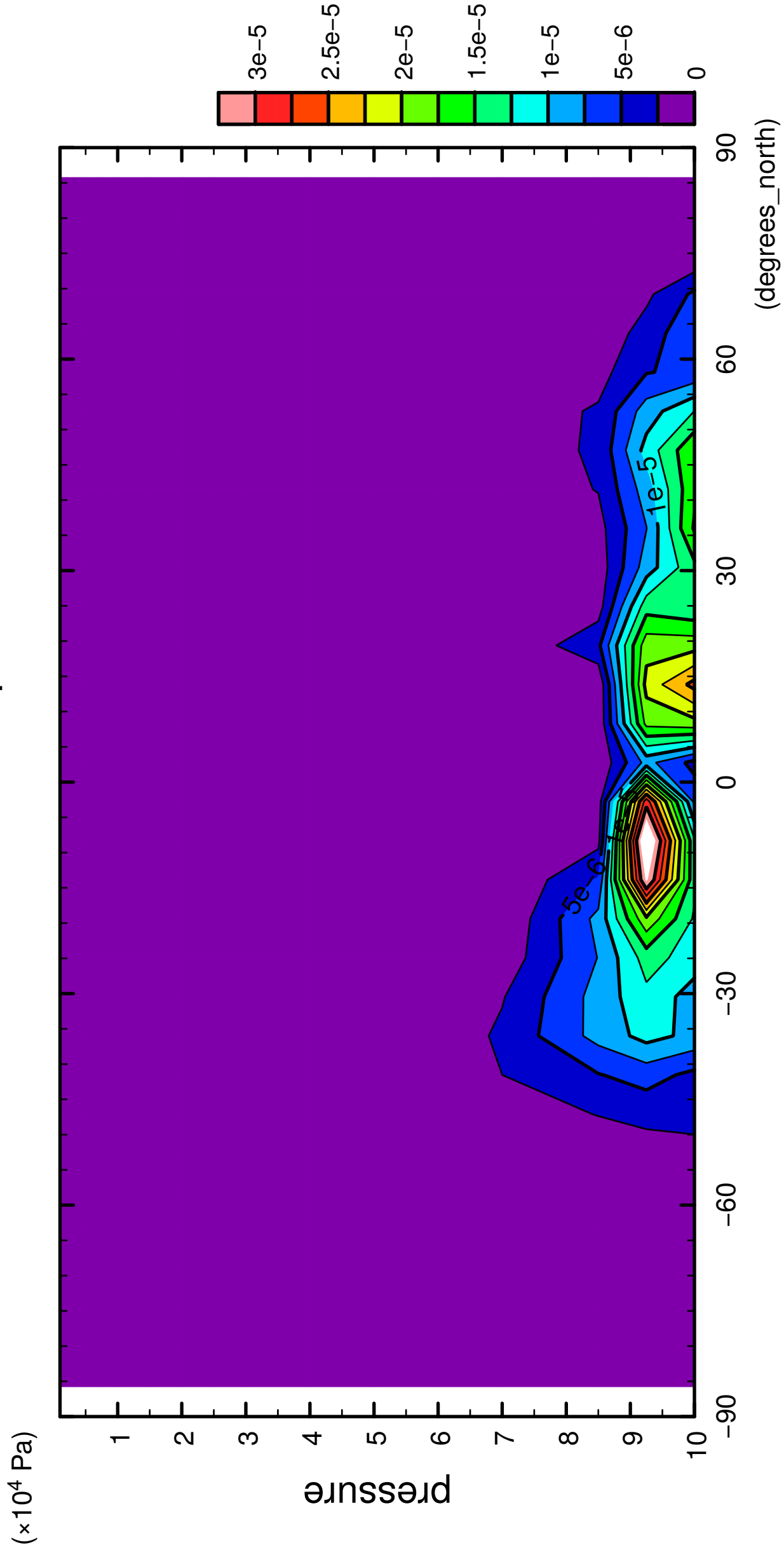
3/12

QH2OLiq



4/12

QH2OLiq

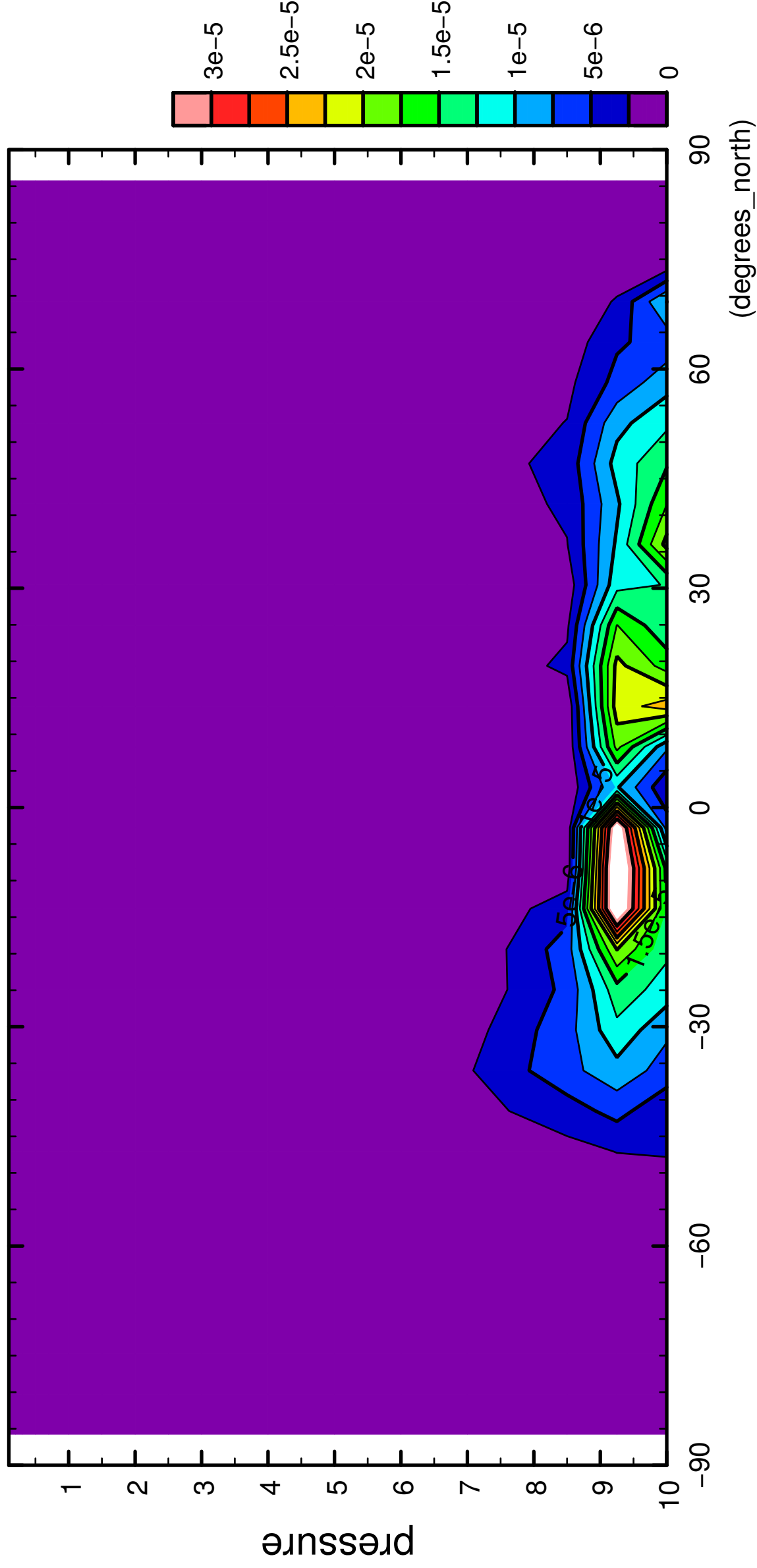


CONTOUR INTERVAL = 2.500E-06

5/12

QH2OLiq

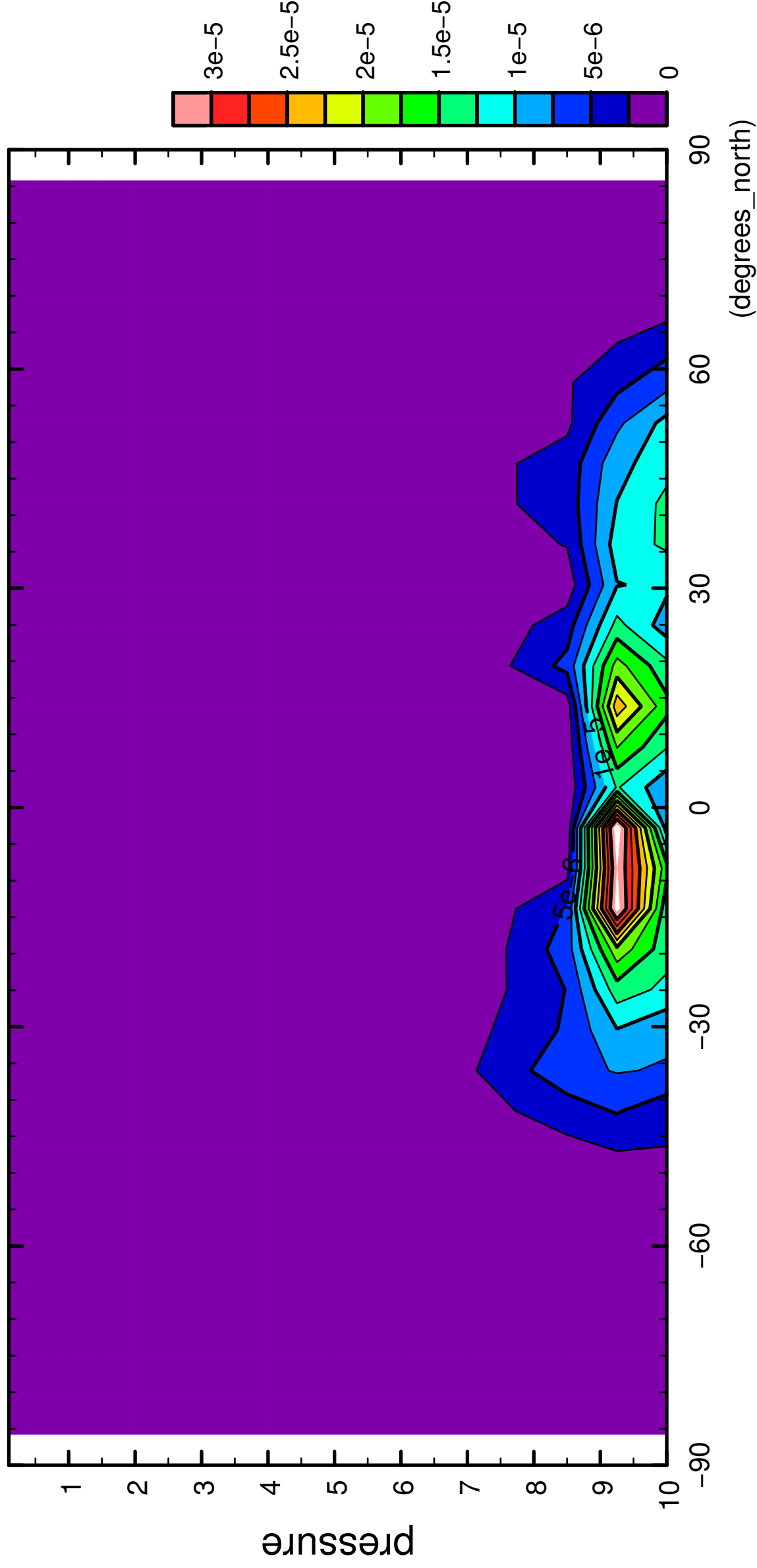
( $\times 10^4$  Pa)



6/12

QH2OLiq

( $\times 10^4$  Pa)

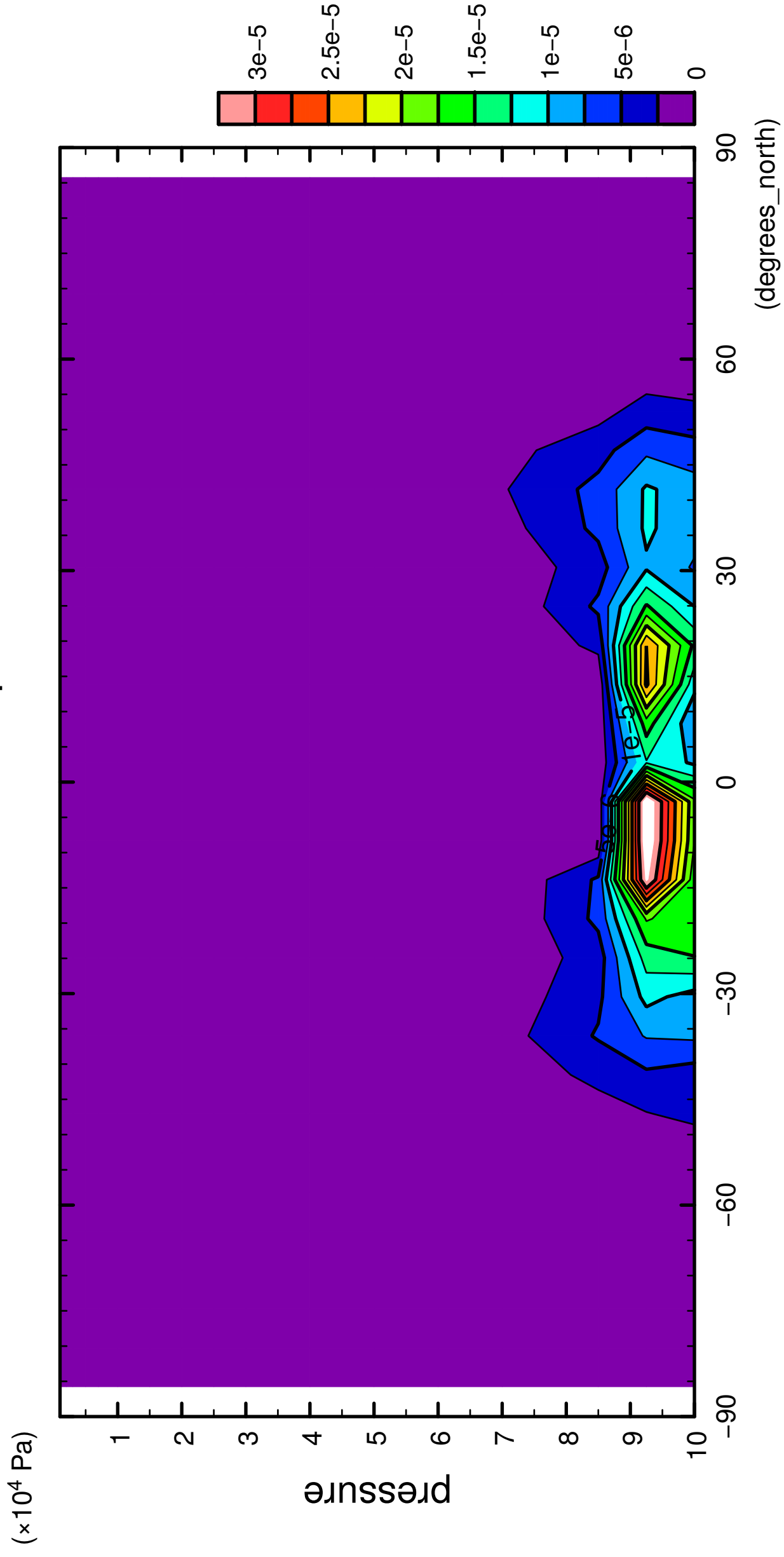


latitude

CONTOUR INTERVAL =  $2.500 \times 10^{-6}$

7/12

QH2OLiq



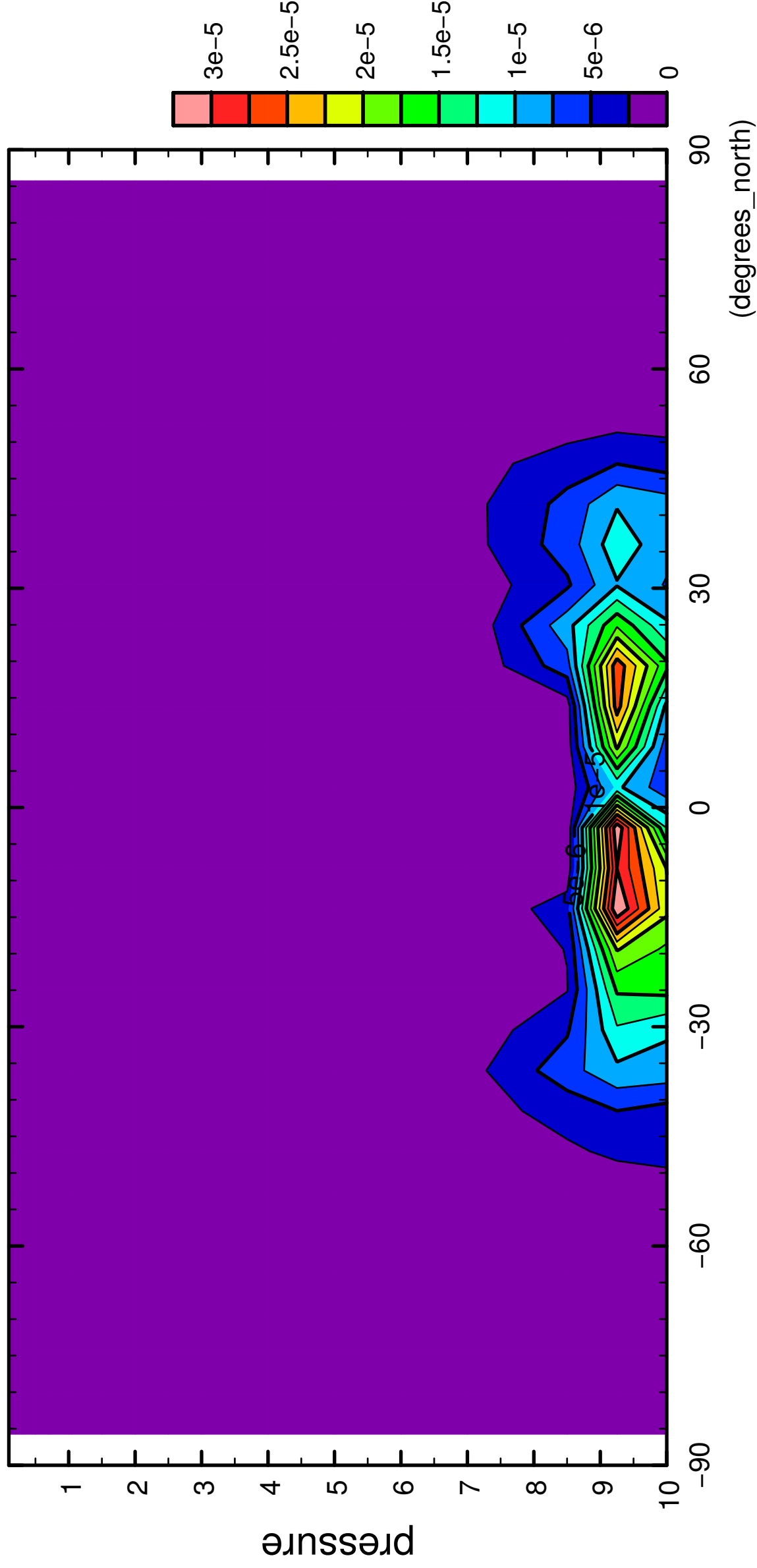
latitude

CONTOUR INTERVAL = 2.500E-06

8/12

QH2OLiq

( $\times 10^4$  Pa)



latitude

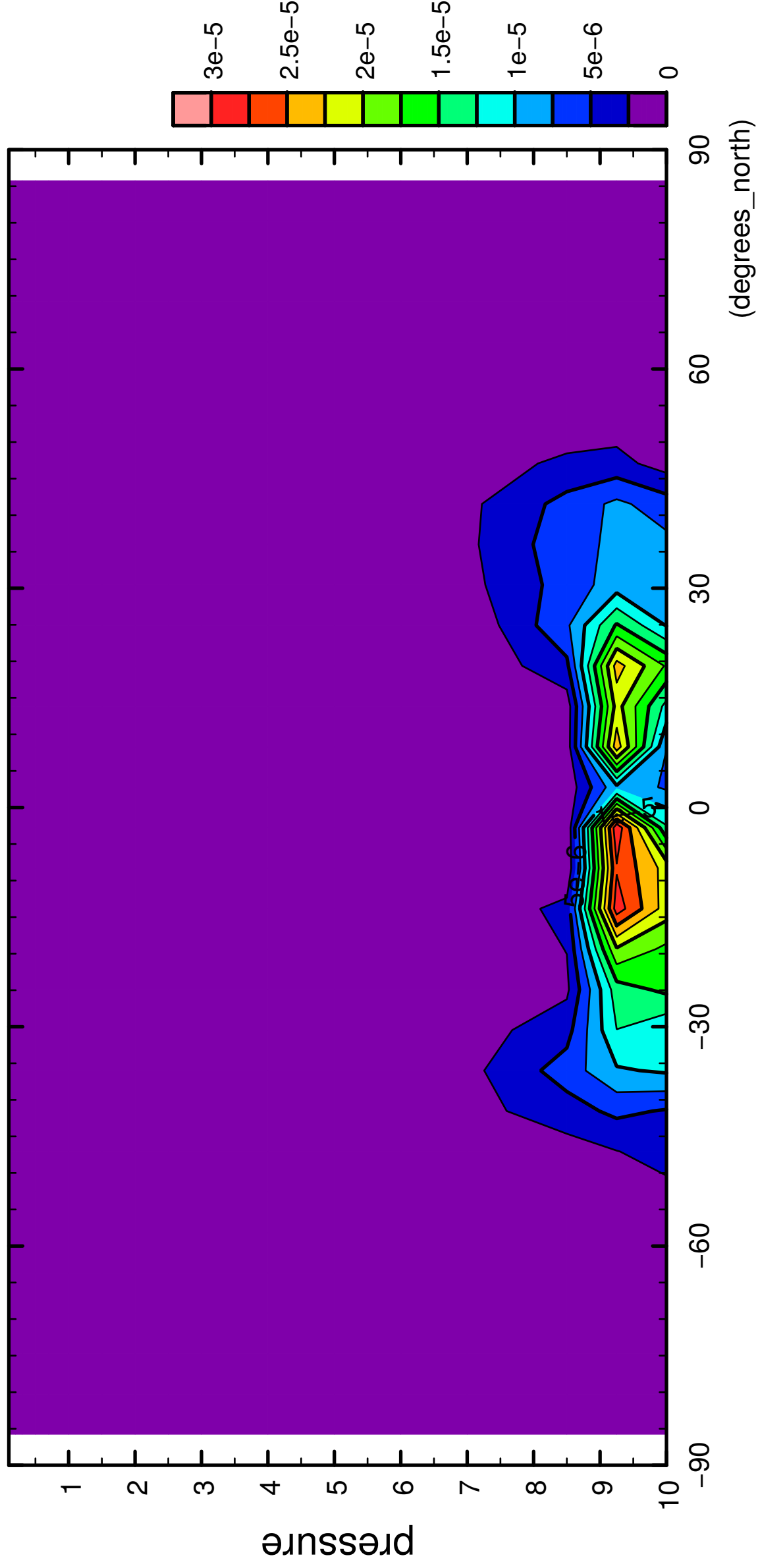
CONTOUR INTERVAL =  $2.500 \times 10^{-6}$



9/12

QH2OLiq

( $\times 10^4$  Pa)

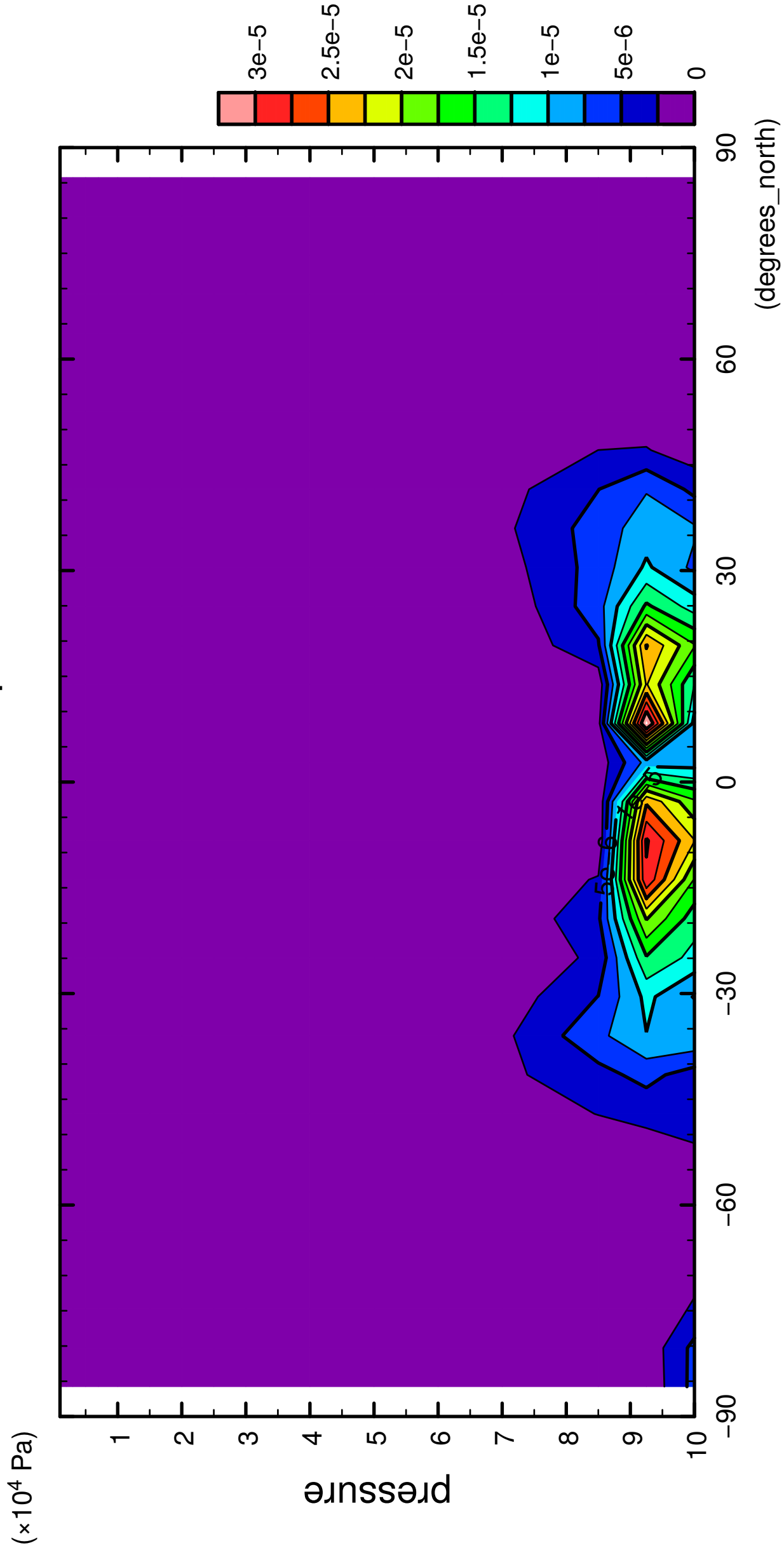


latitude

CONTOUR INTERVAL =  $2.500 \times 10^{-6}$

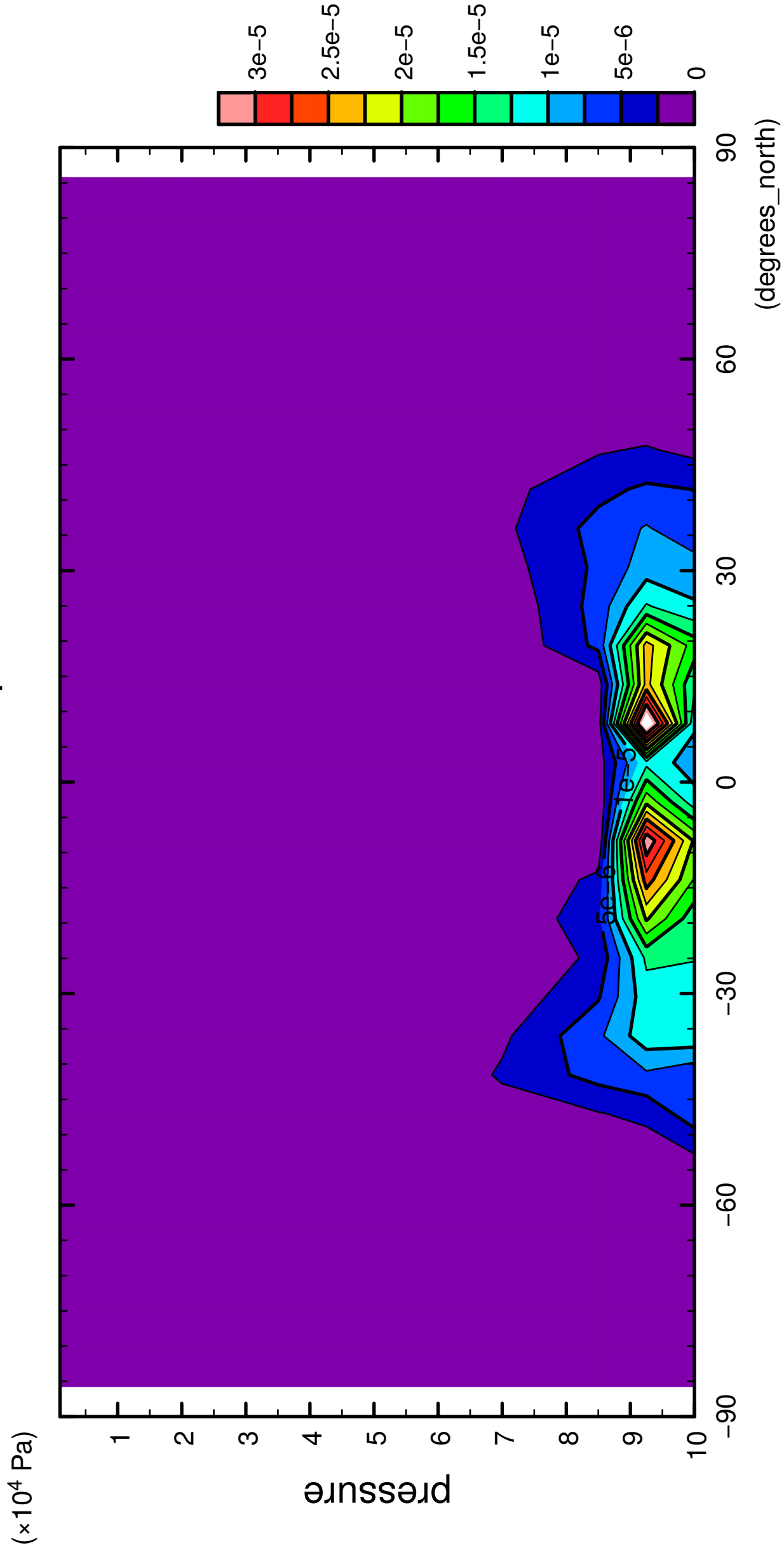
10/12

QH2OLiq



11/12

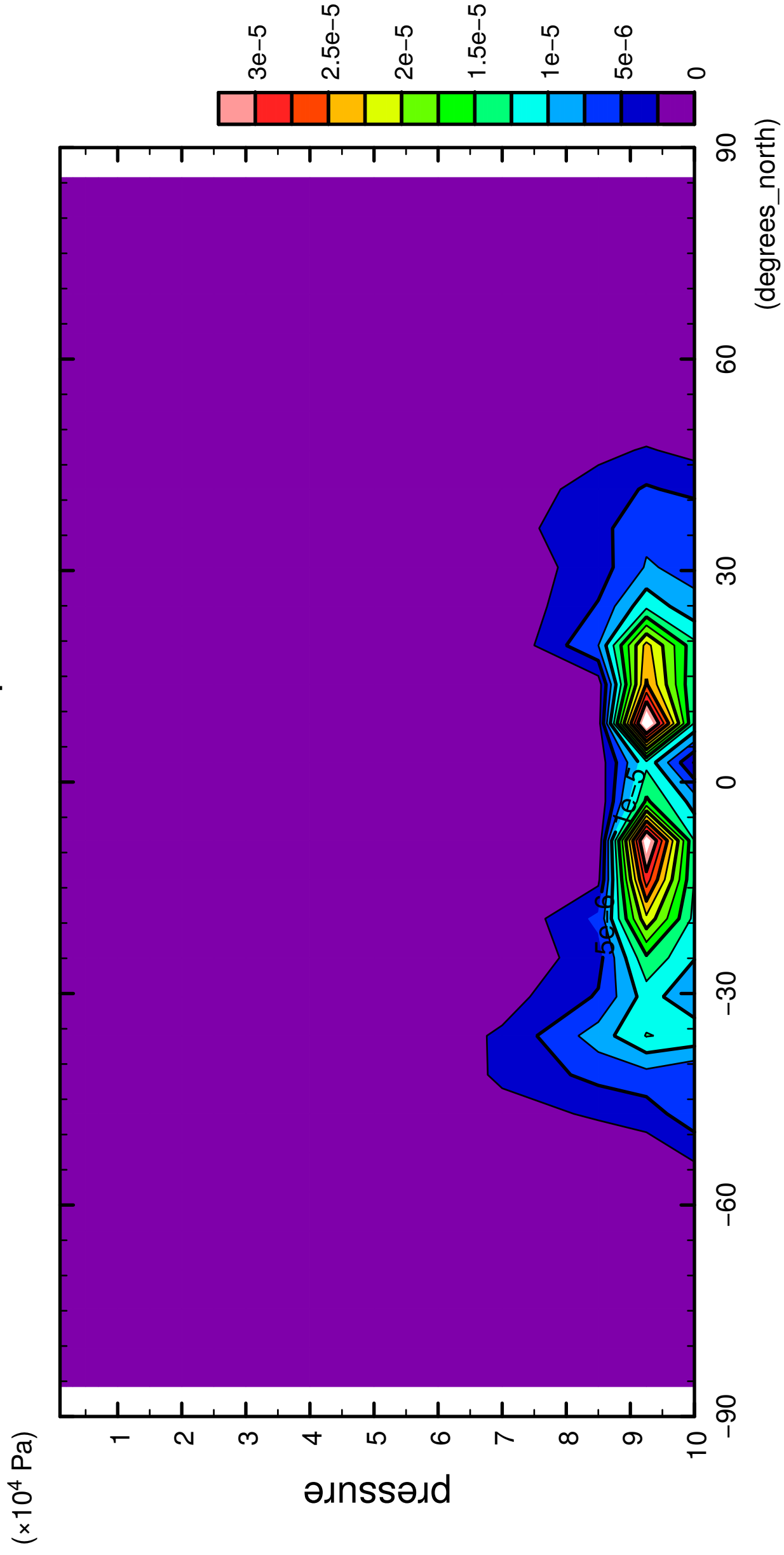
QH2OLiq



CONTOUR INTERVAL = 2.500E-06

12/12

QH2OLiq



CONTOUR INTERVAL =  $2.500 \times 10^{-6}$