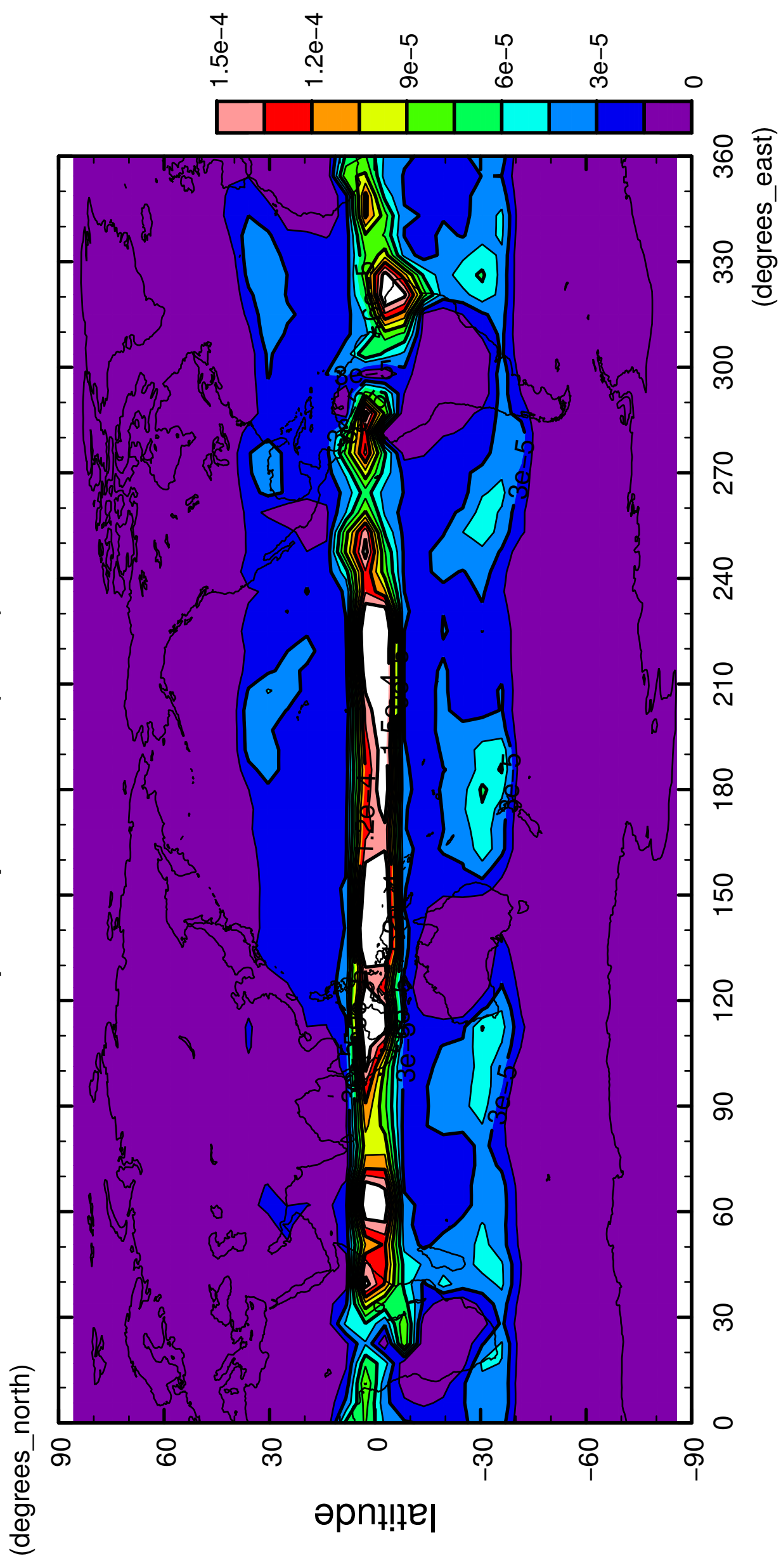


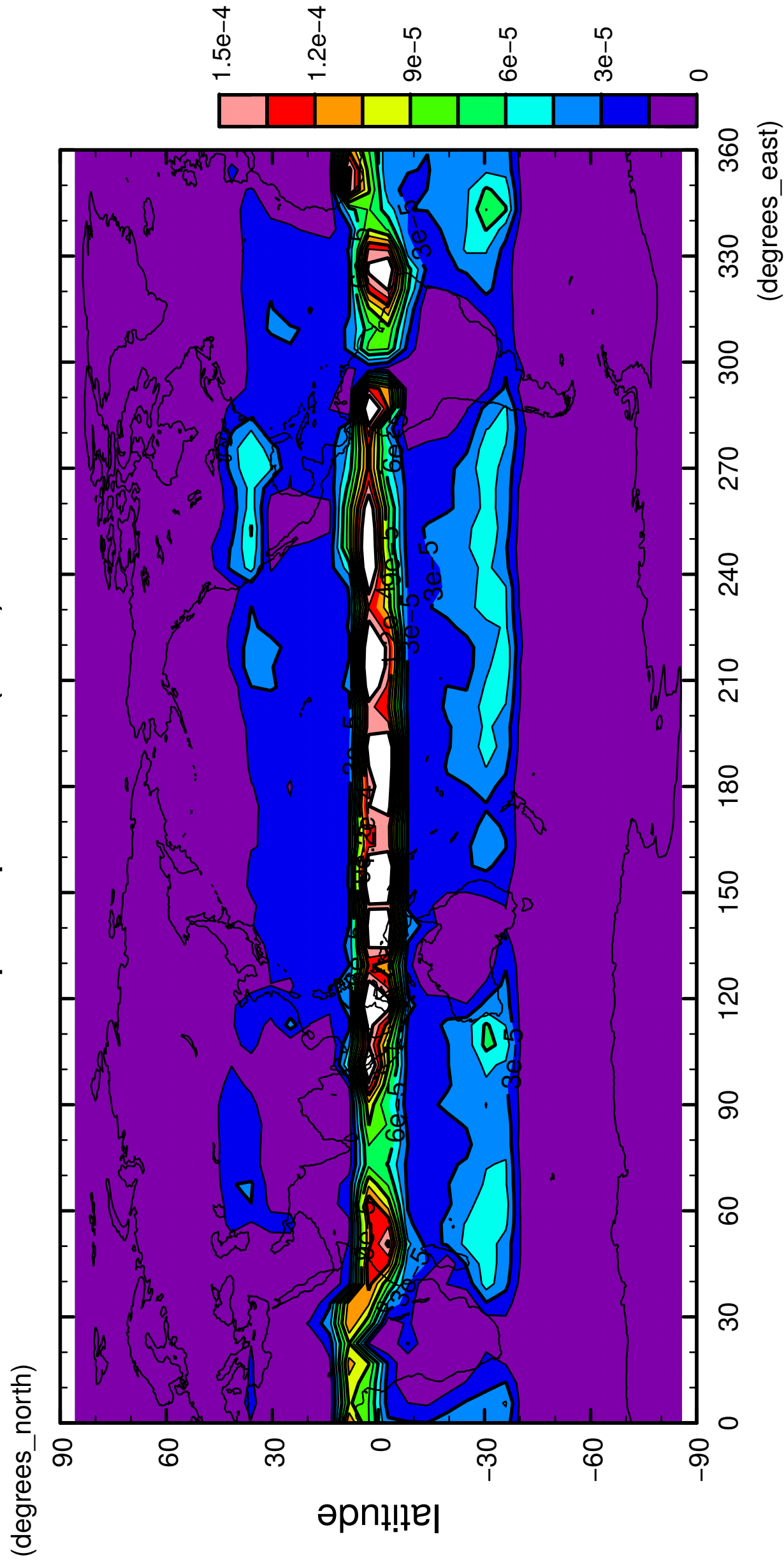
1/12

# precipitation (rain)



2/12

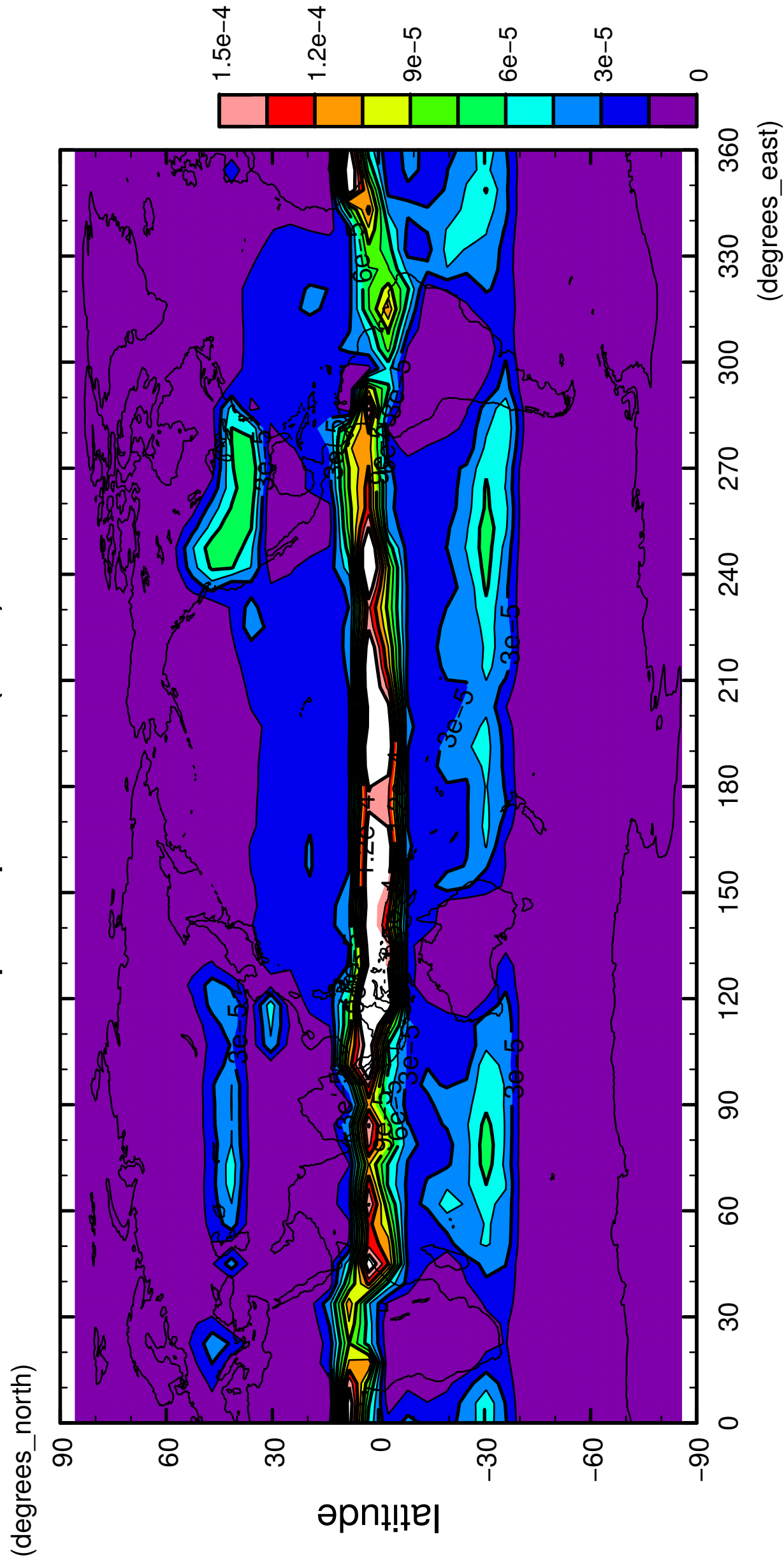
# precipitation (rain)



longitude  
CONTOUR INTERVAL = 1.500E-05

3/12

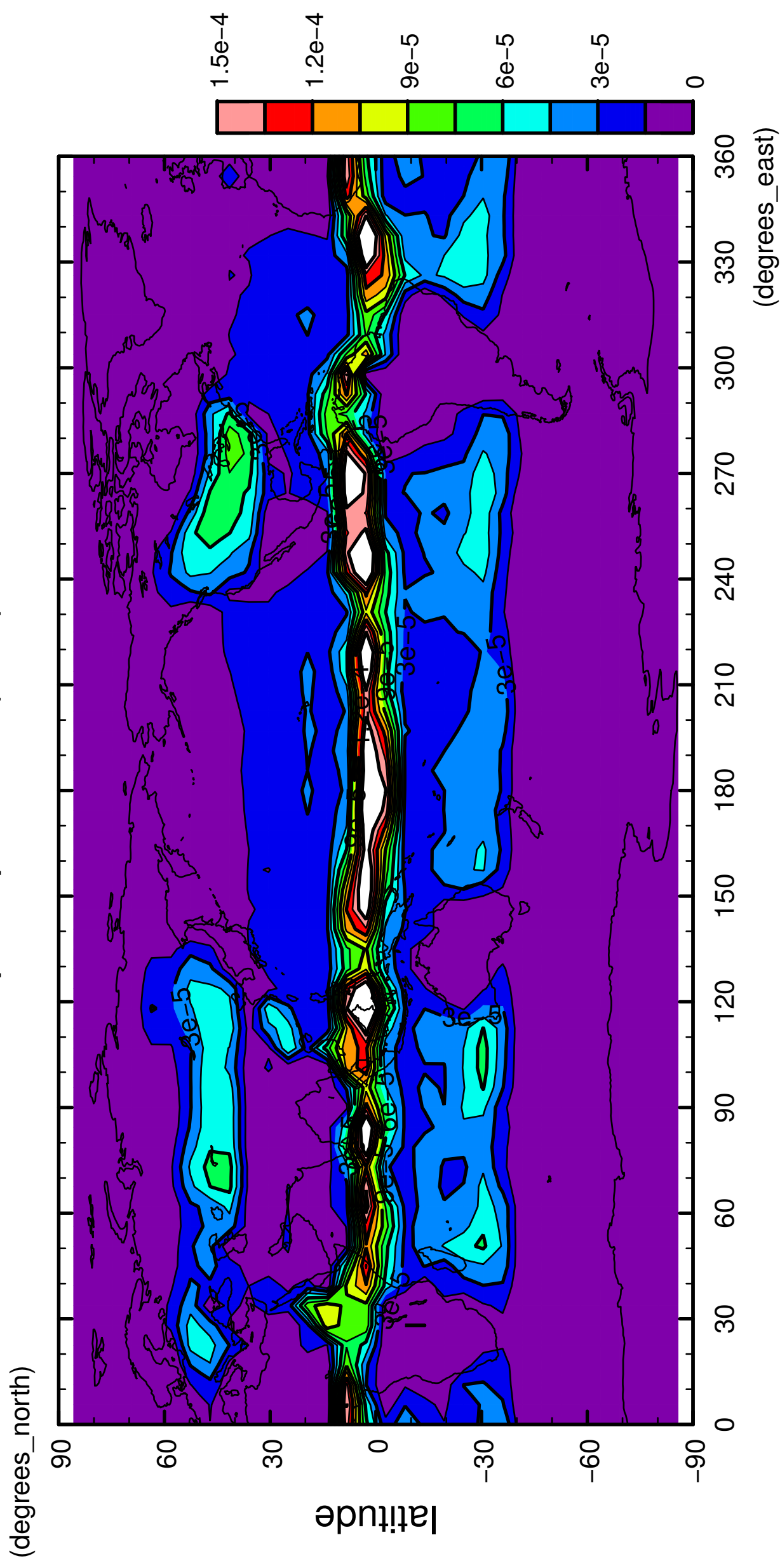
# precipitation (rain)



longitude  
CONTOUR INTERVAL = 1.500E-05

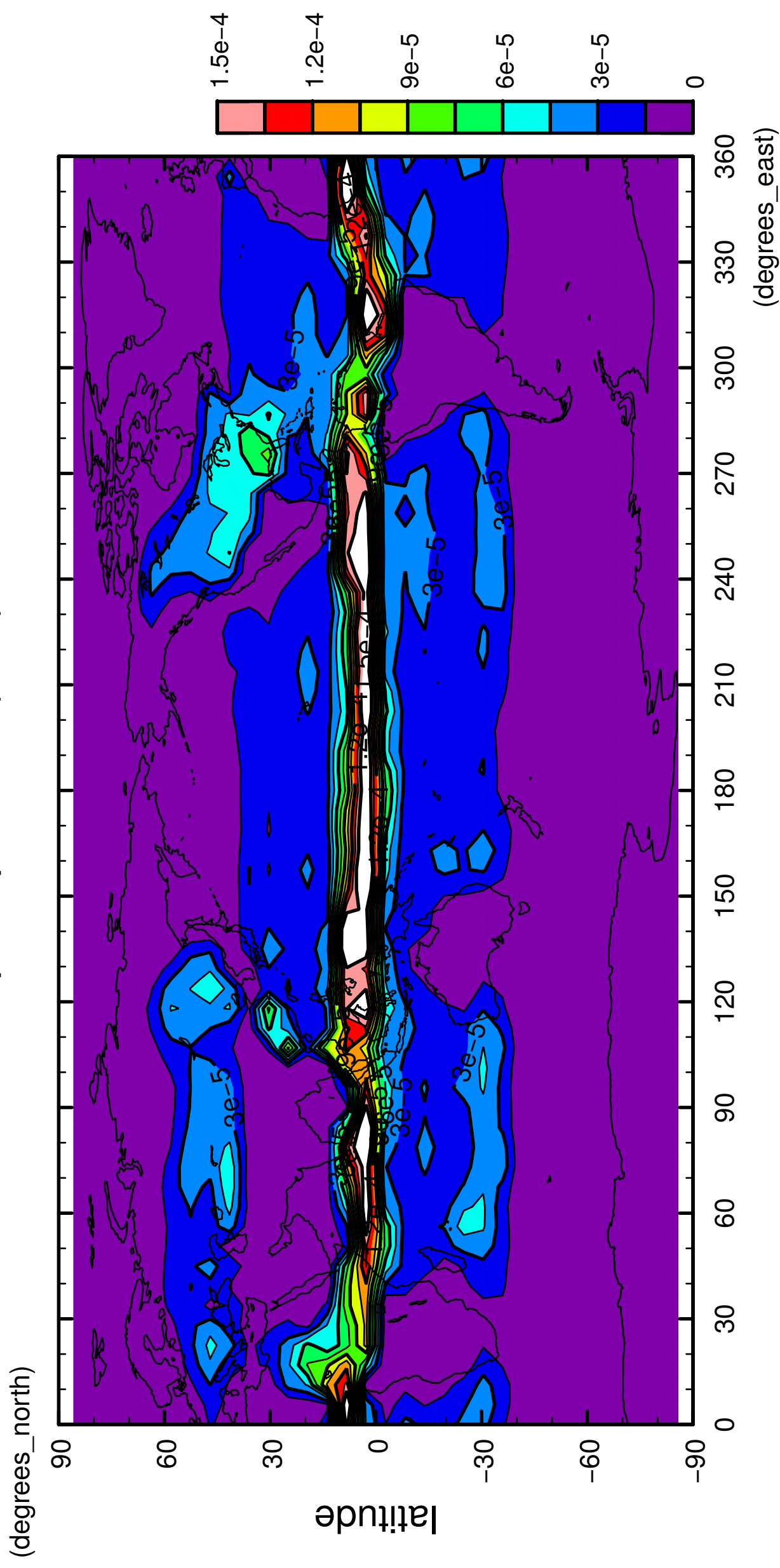
4/12

# precipitation (rain)



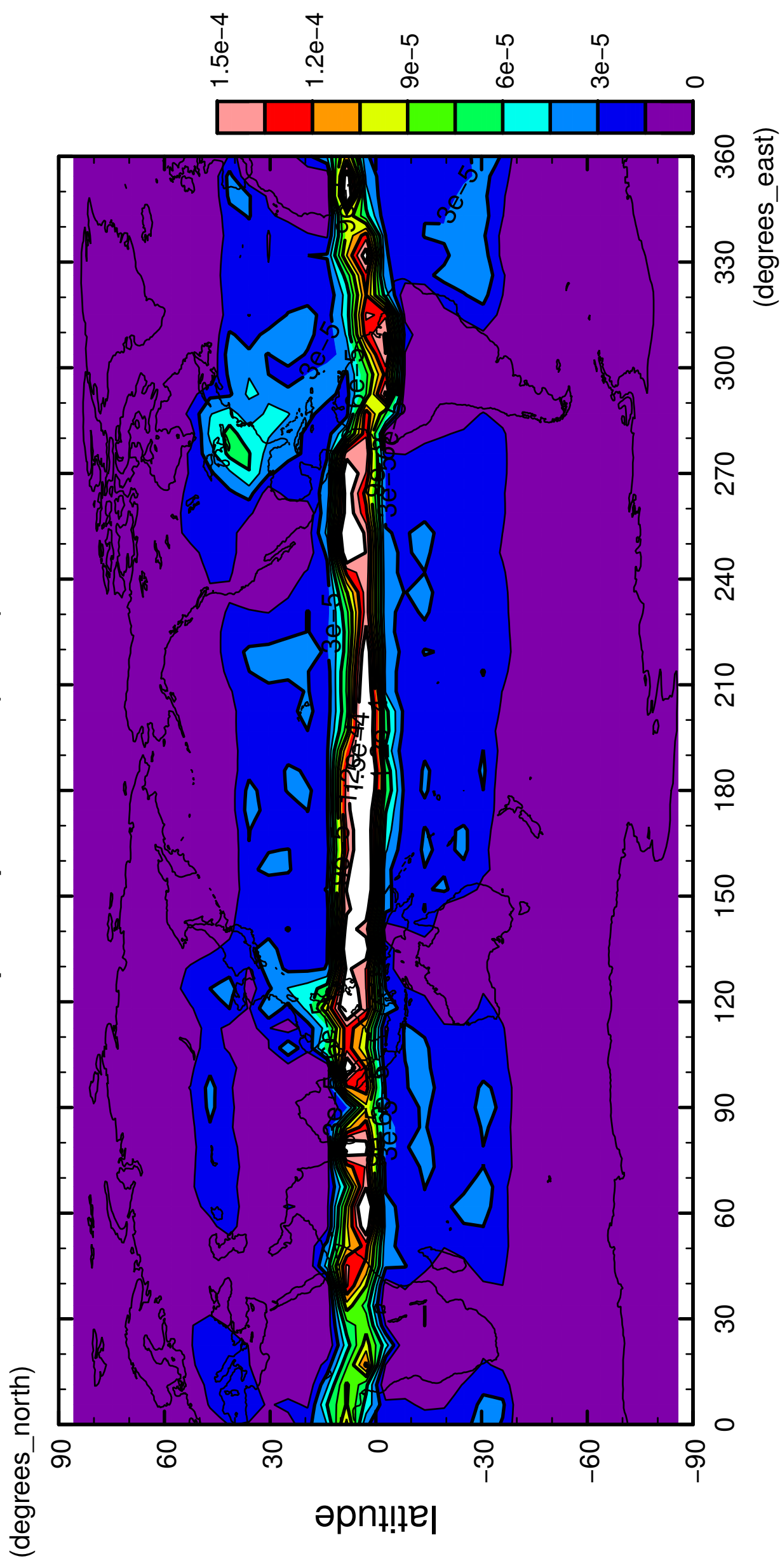
5/12

# precipitation (rain)



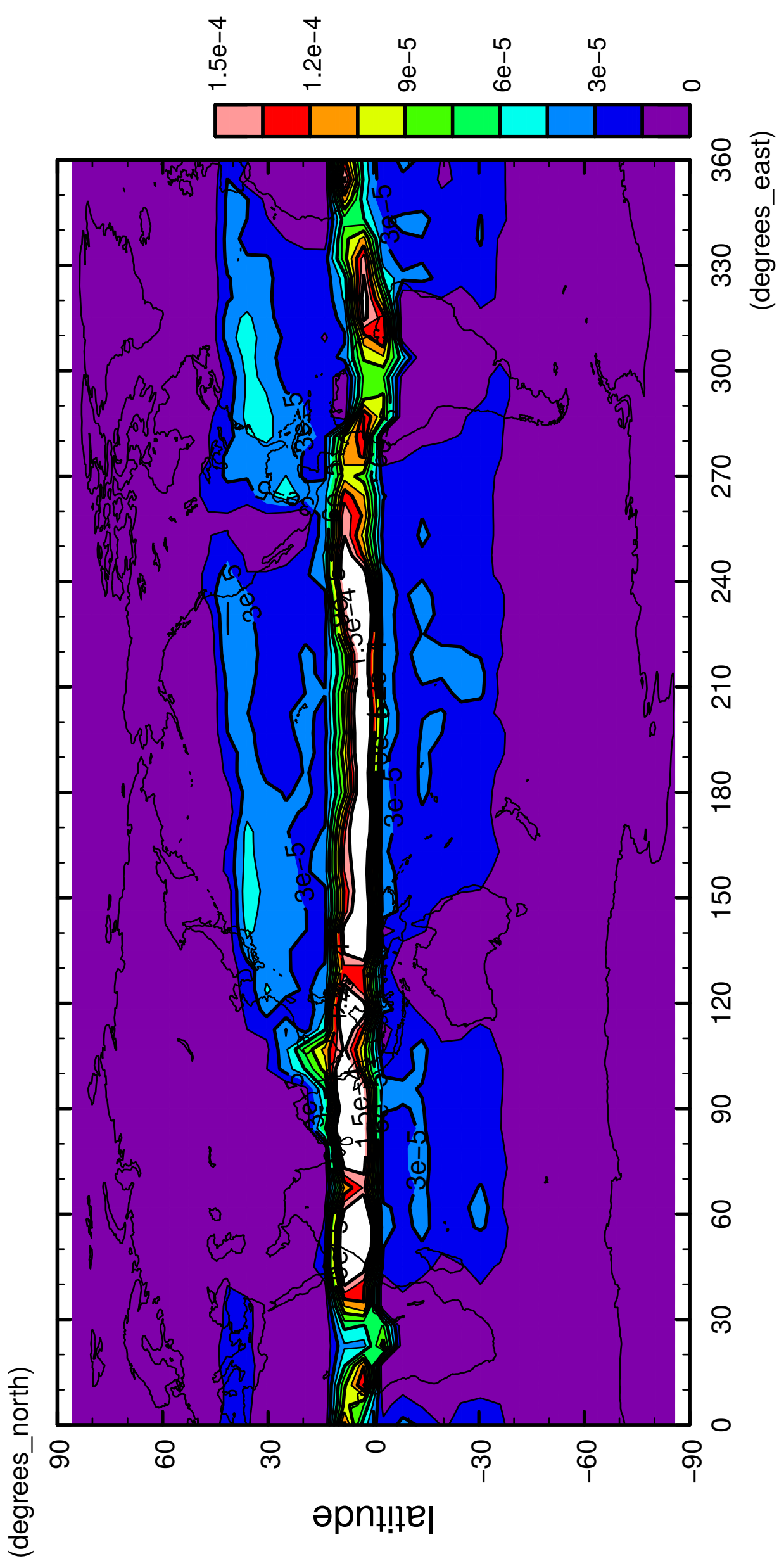
6/12

precipitation (rain)



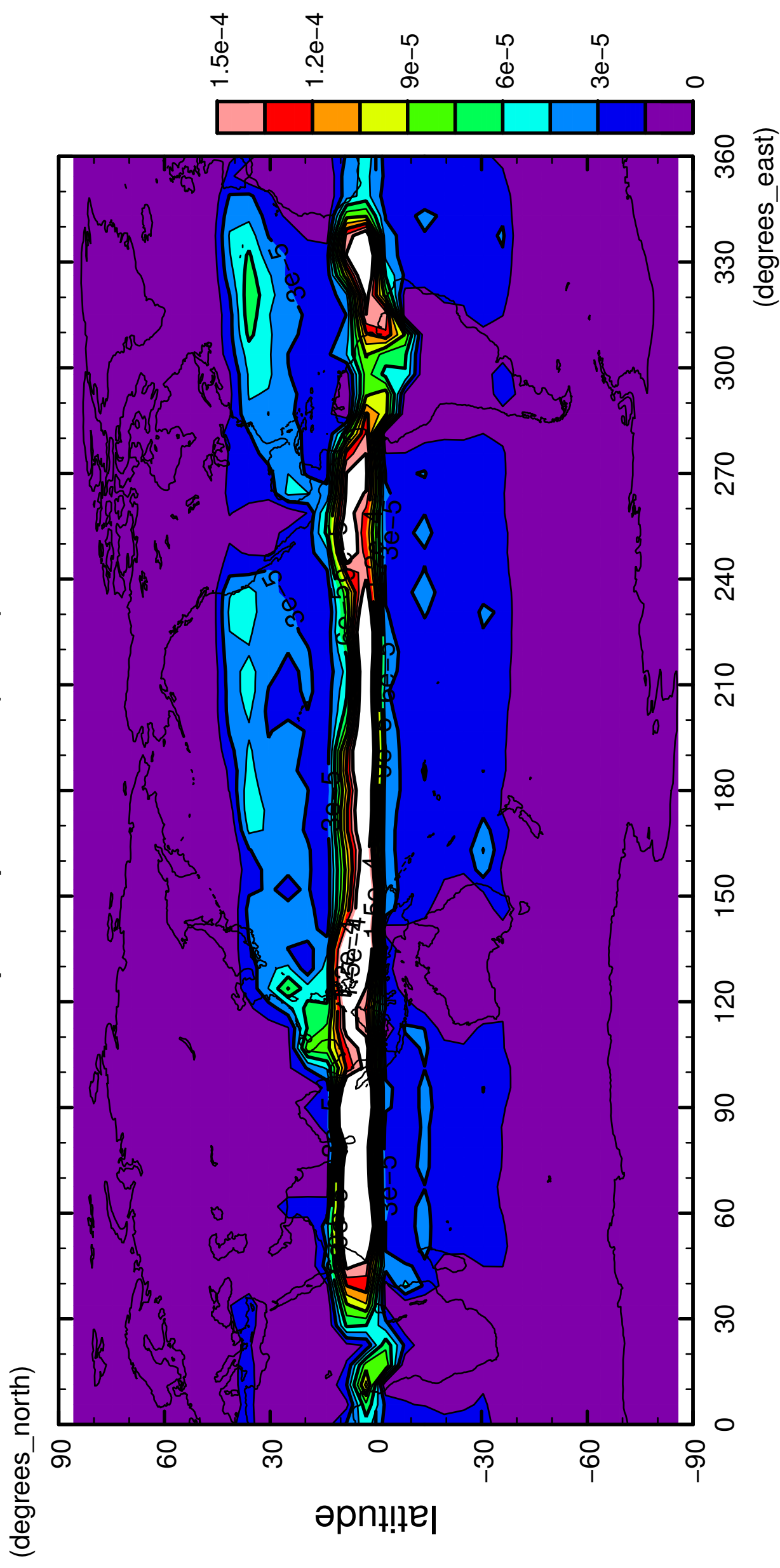
7/12

# precipitation (rain)



8/12

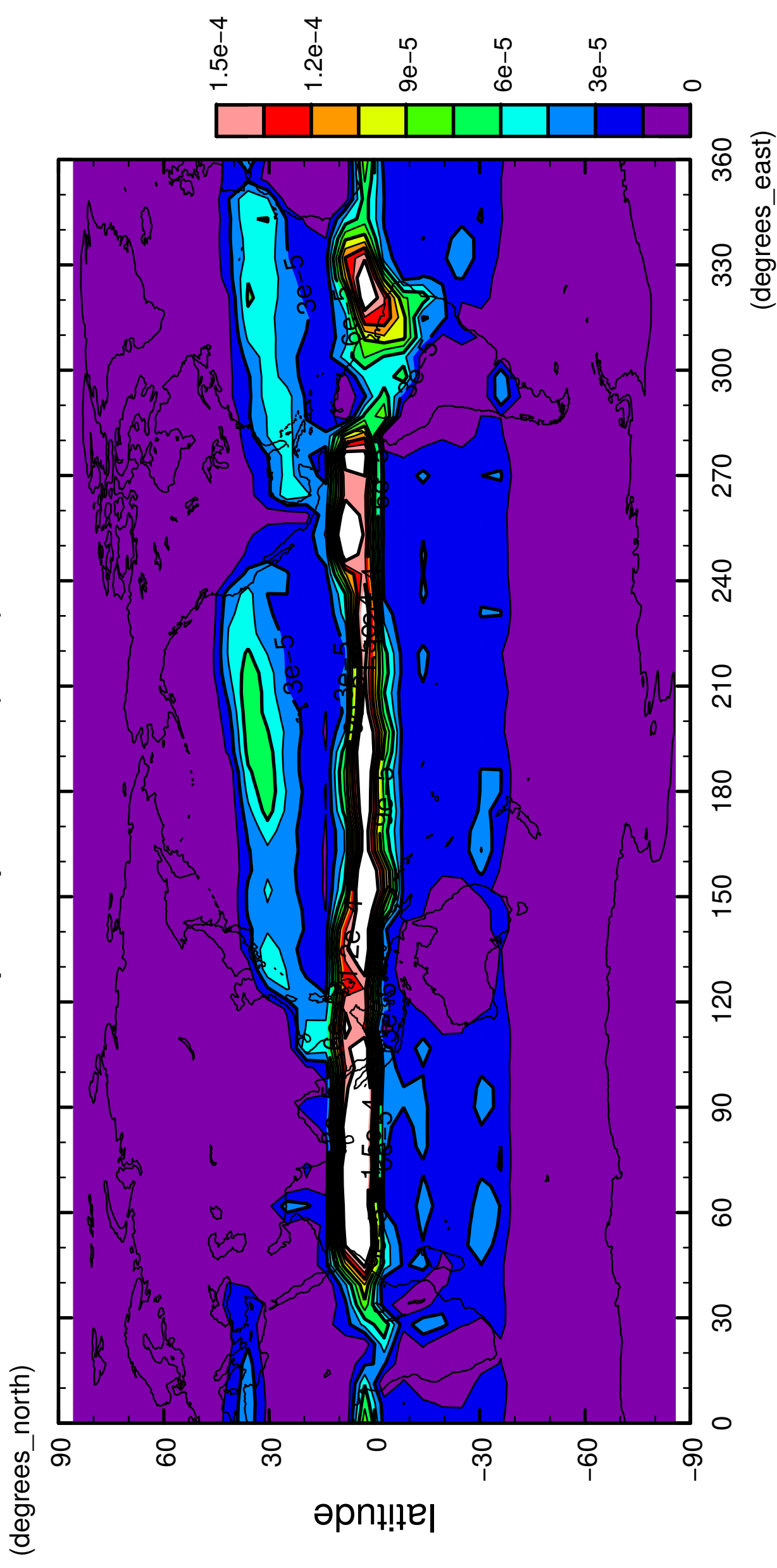
# precipitation (rain)





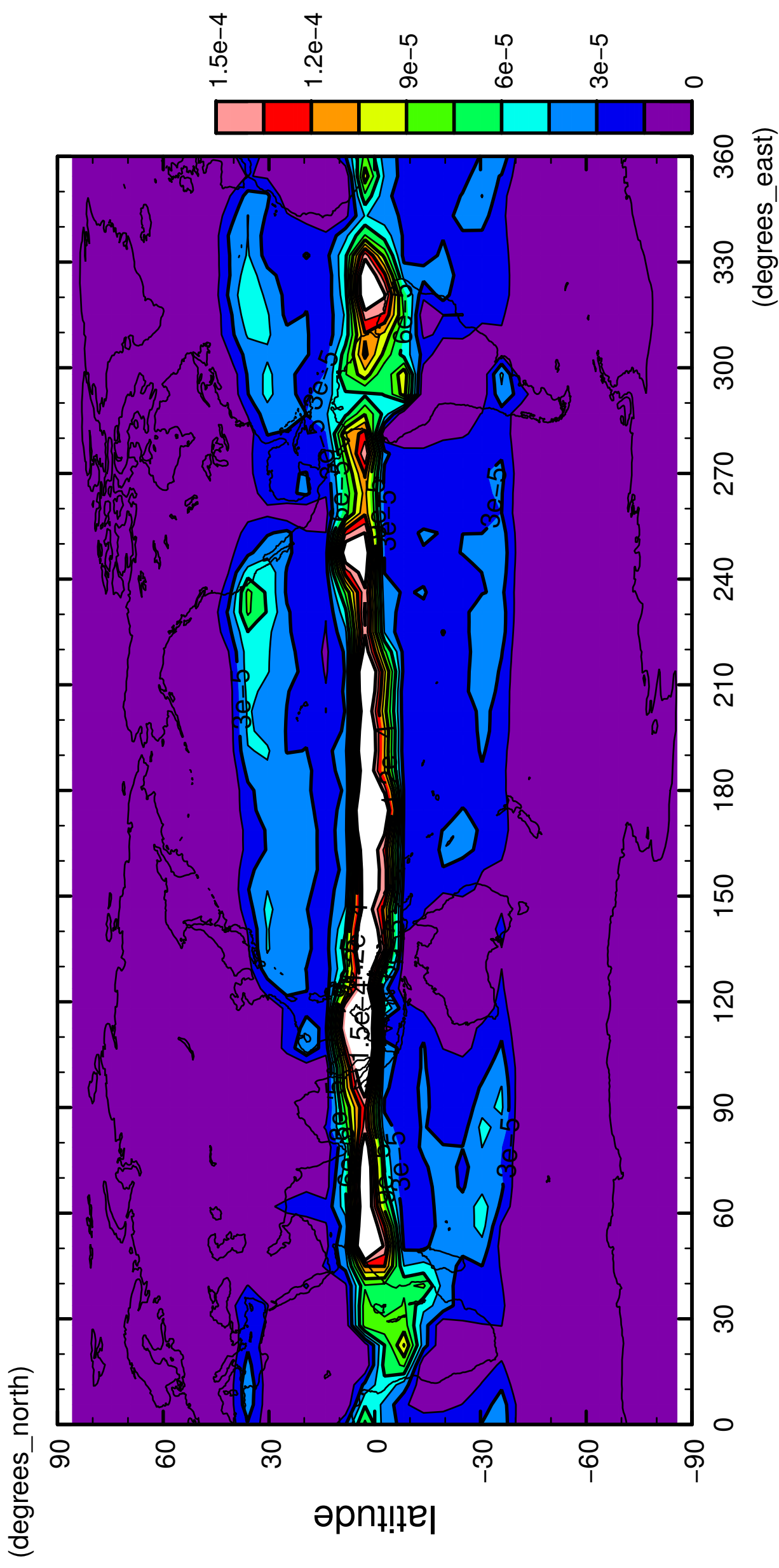
9/12

precipitation (rain)



10/12

precipitation (rain)

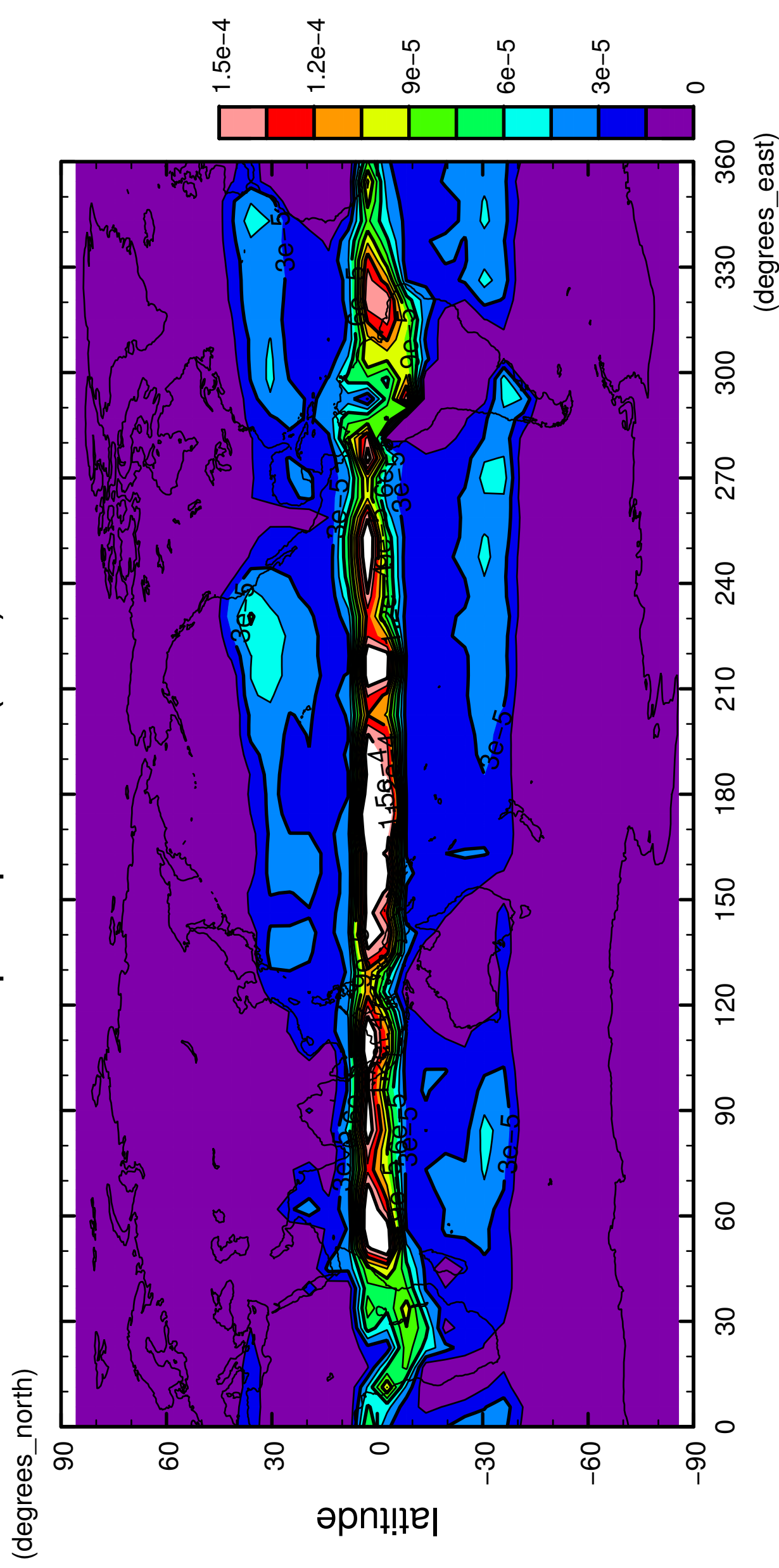


longitude

CONTOUR INTERVAL = 1.500E-05

11/12

precipitation (rain)



longitude  
CONTOUR INTERVAL = 1.500E-05

12/12

# precipitation (rain)

