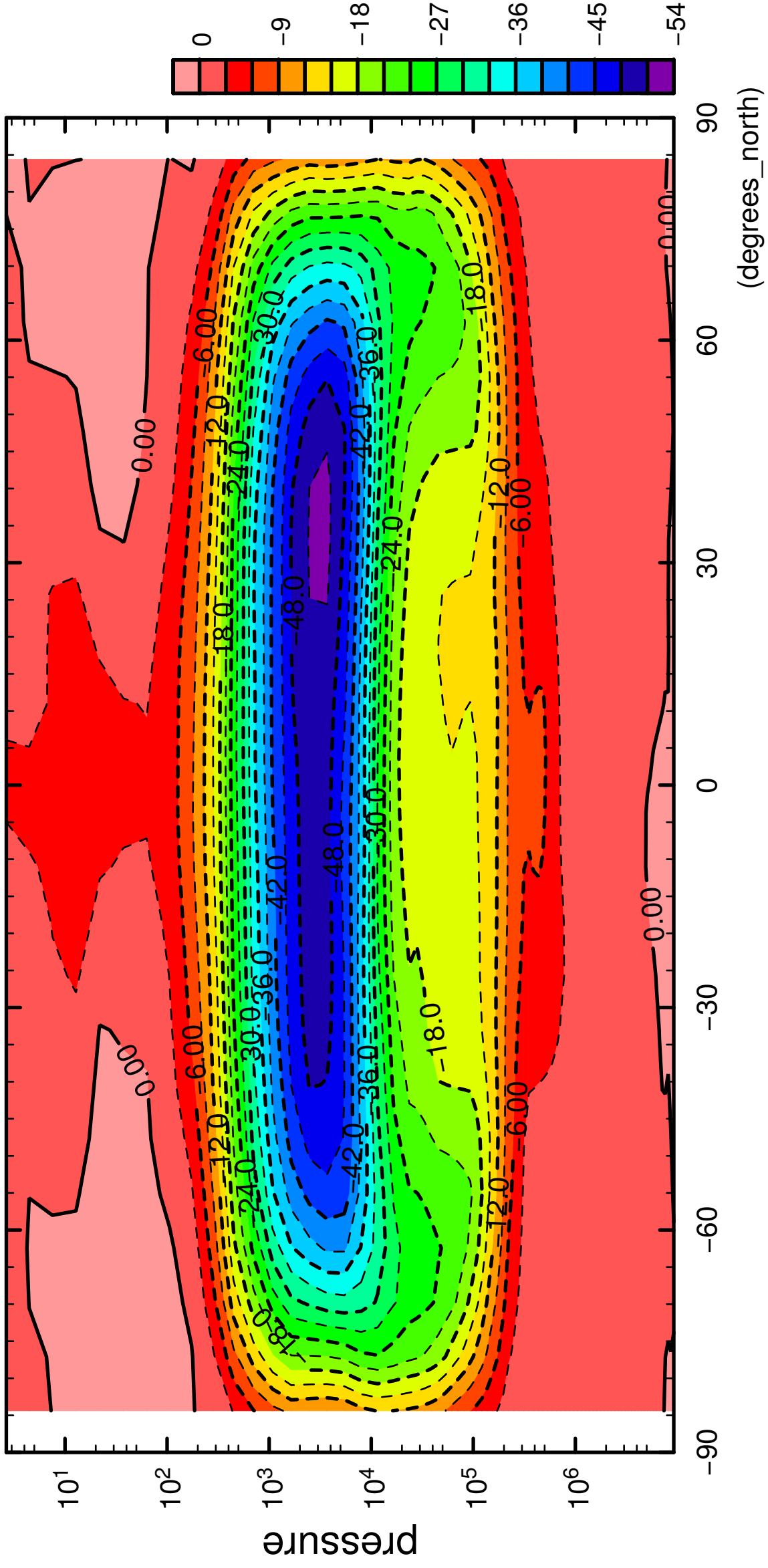


1/10

U

(Pa)

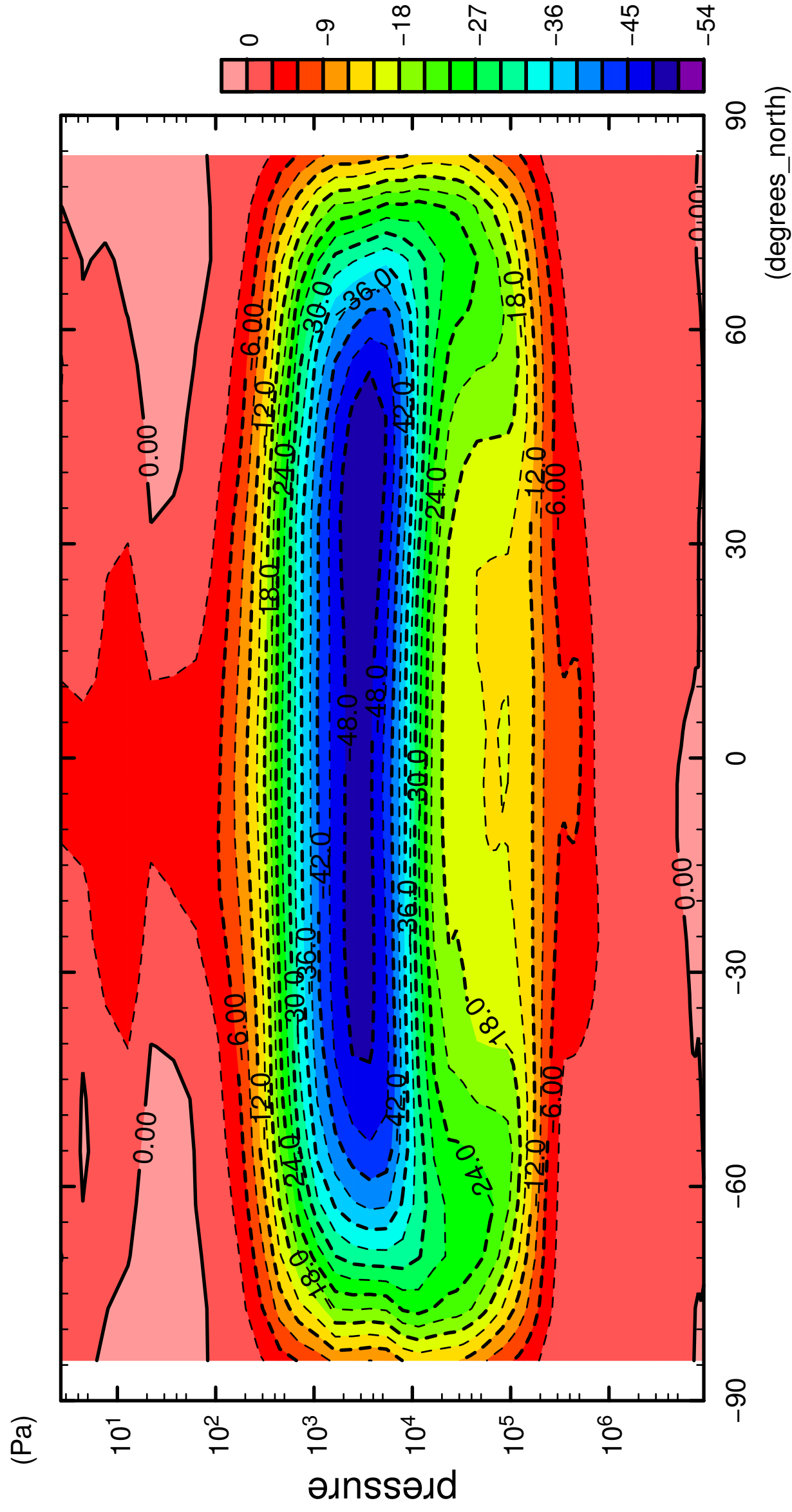


latitude

CONTOUR INTERVAL = 3.000E+00

2/10

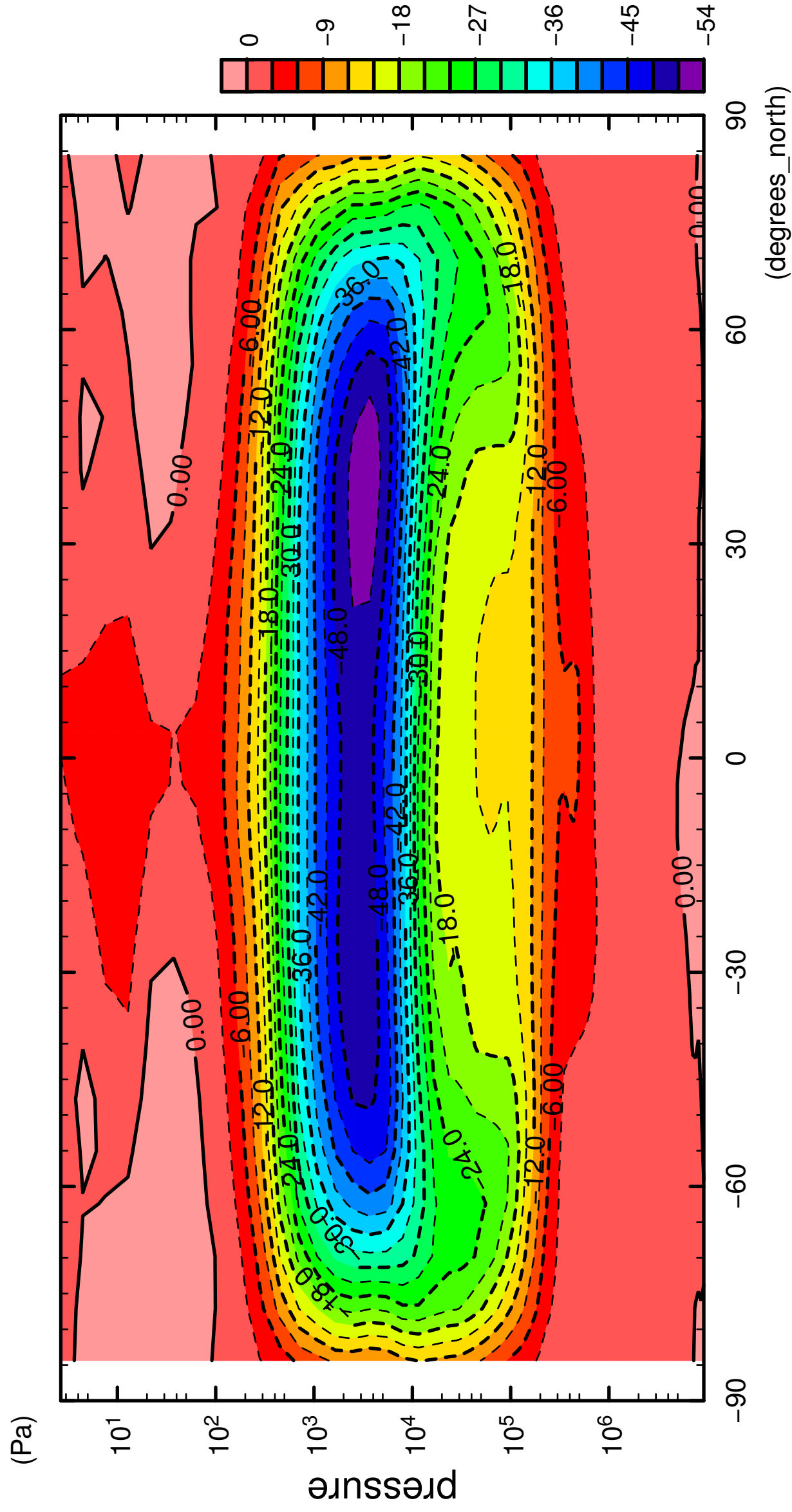
U



CONTOUR INTERVAL = 3.000E+00

3/10

U

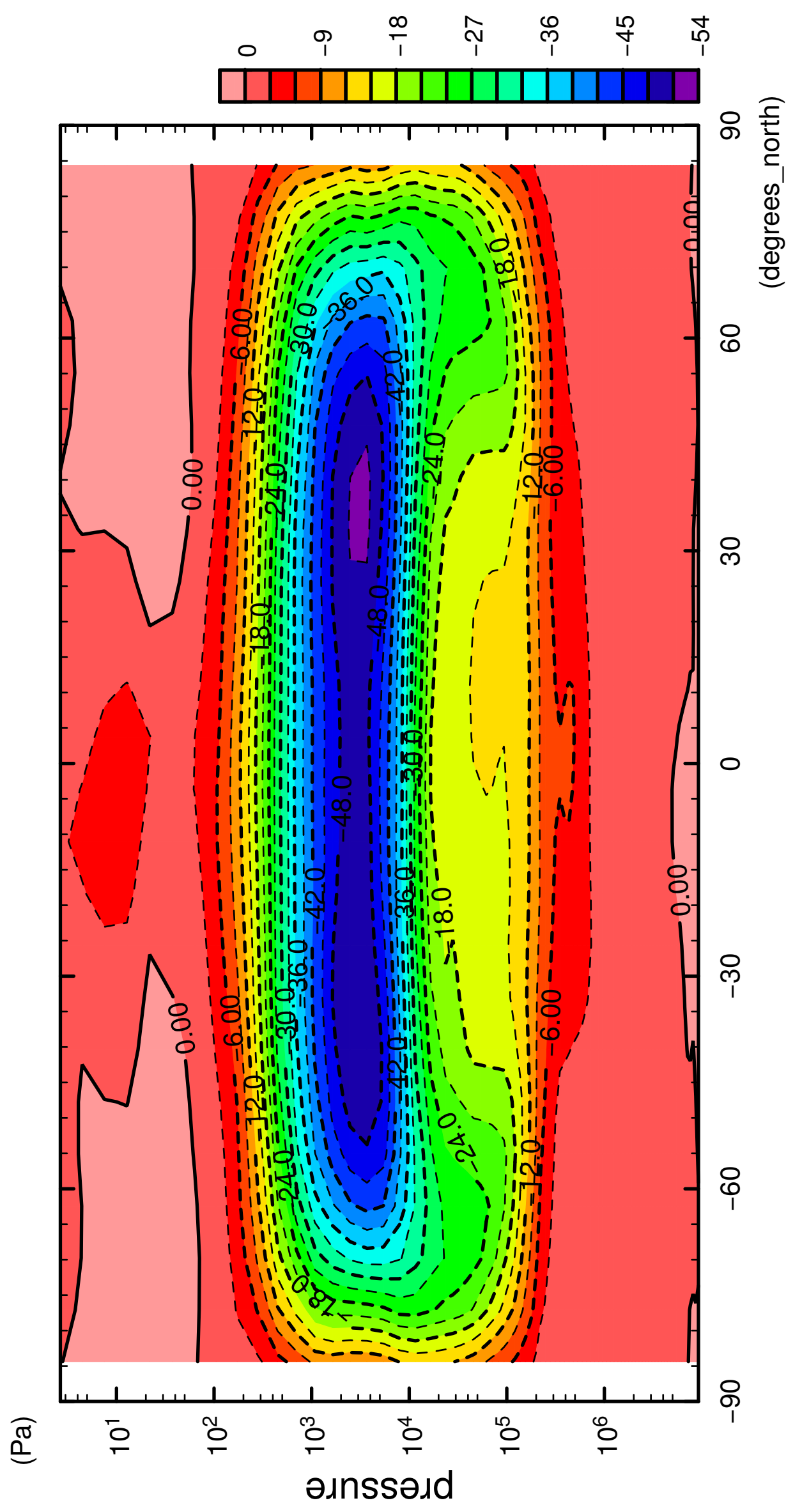


latitude

CONTOUR INTERVAL = 3.000E+00

4/10

U

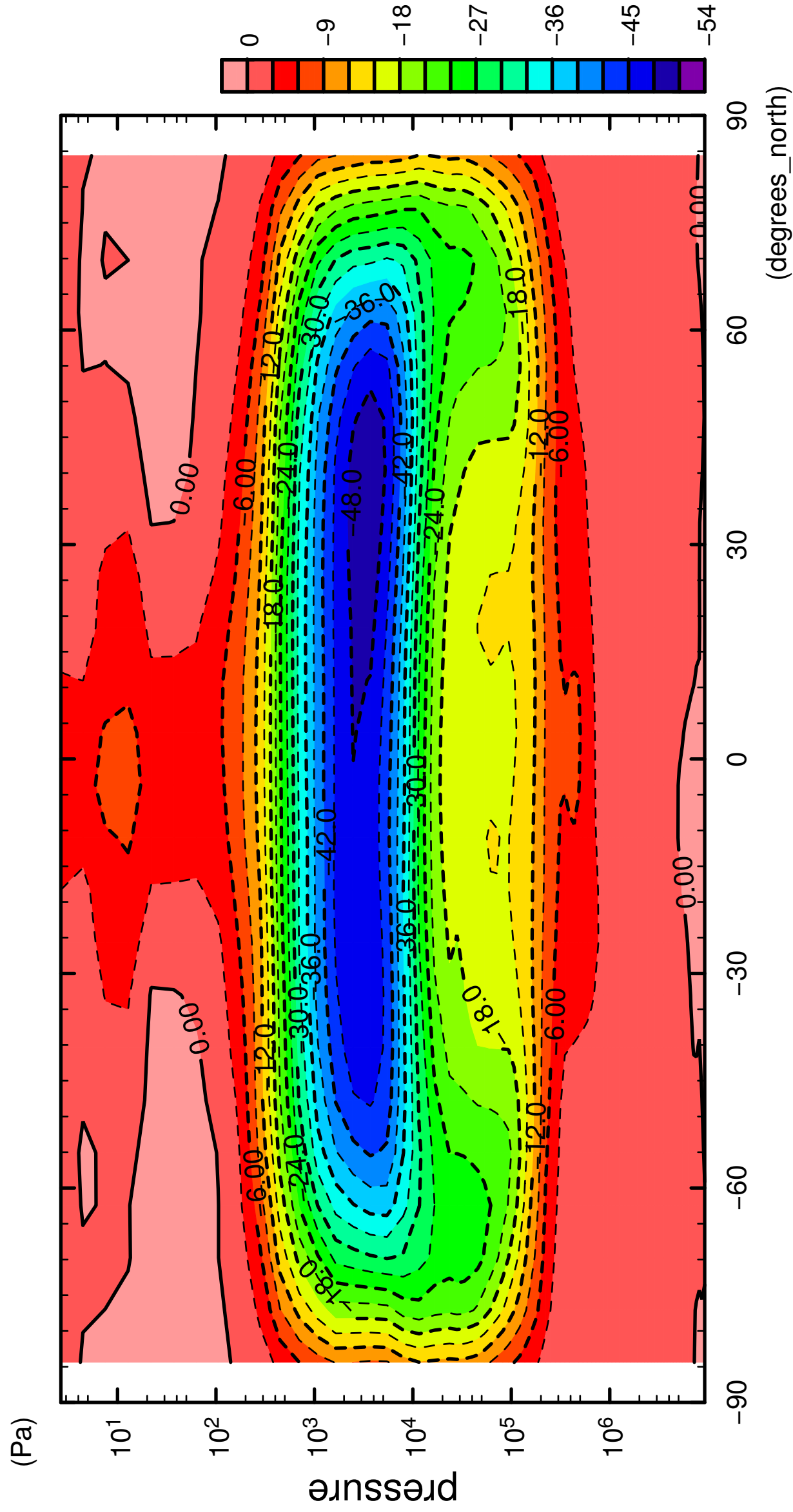


latitude

CONTOUR INTERVAL = 3.000E+00

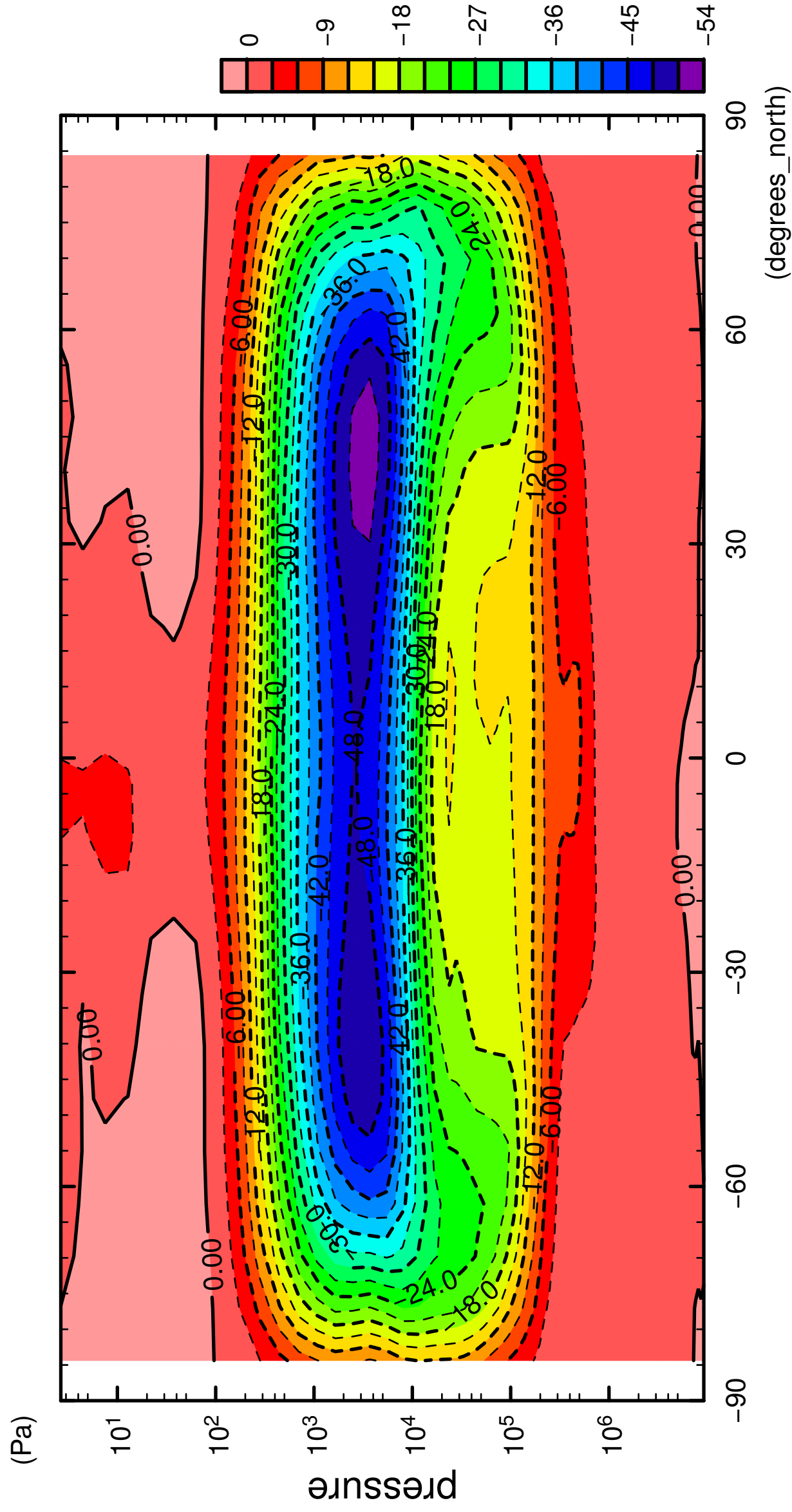
5/10

U



6/10

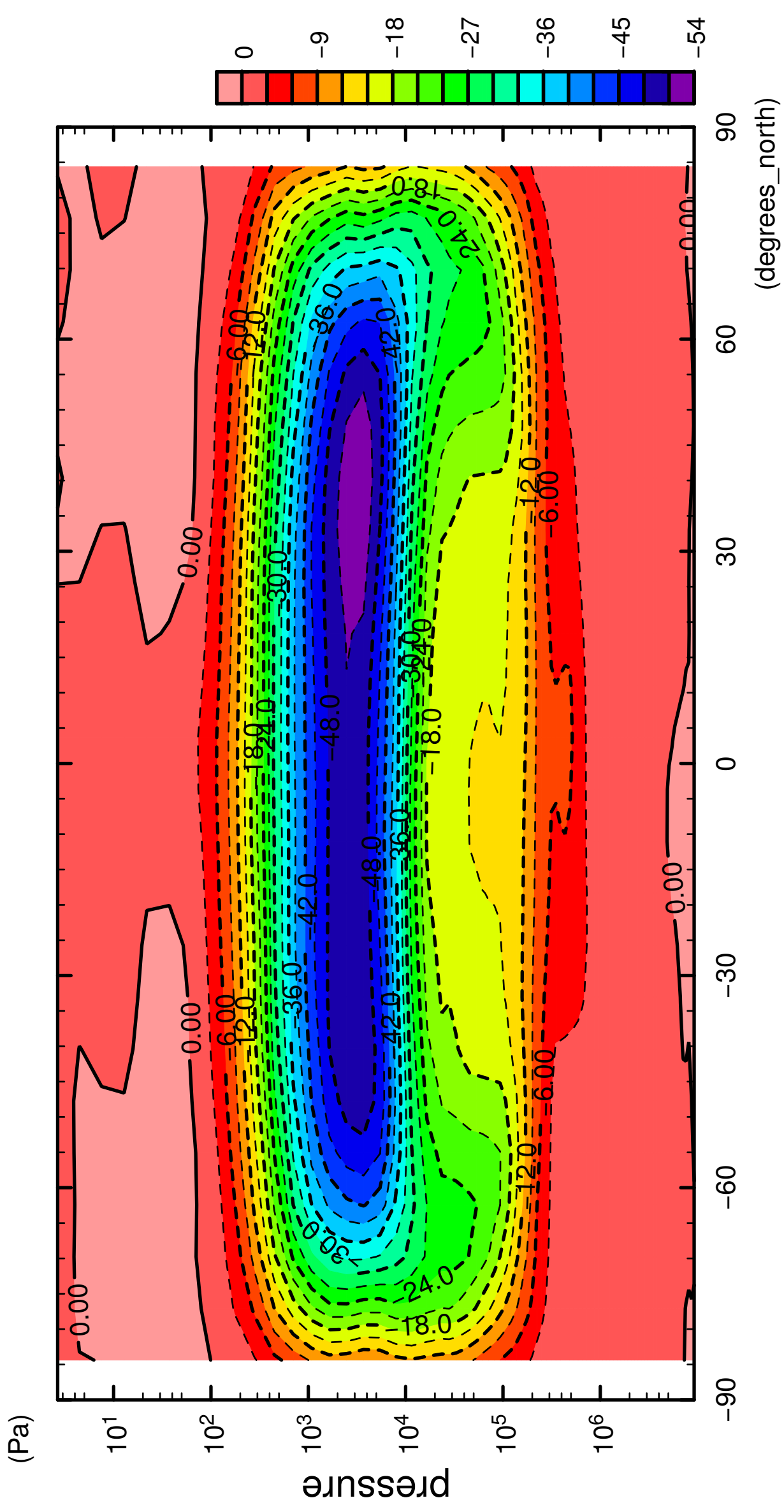
U





7/10

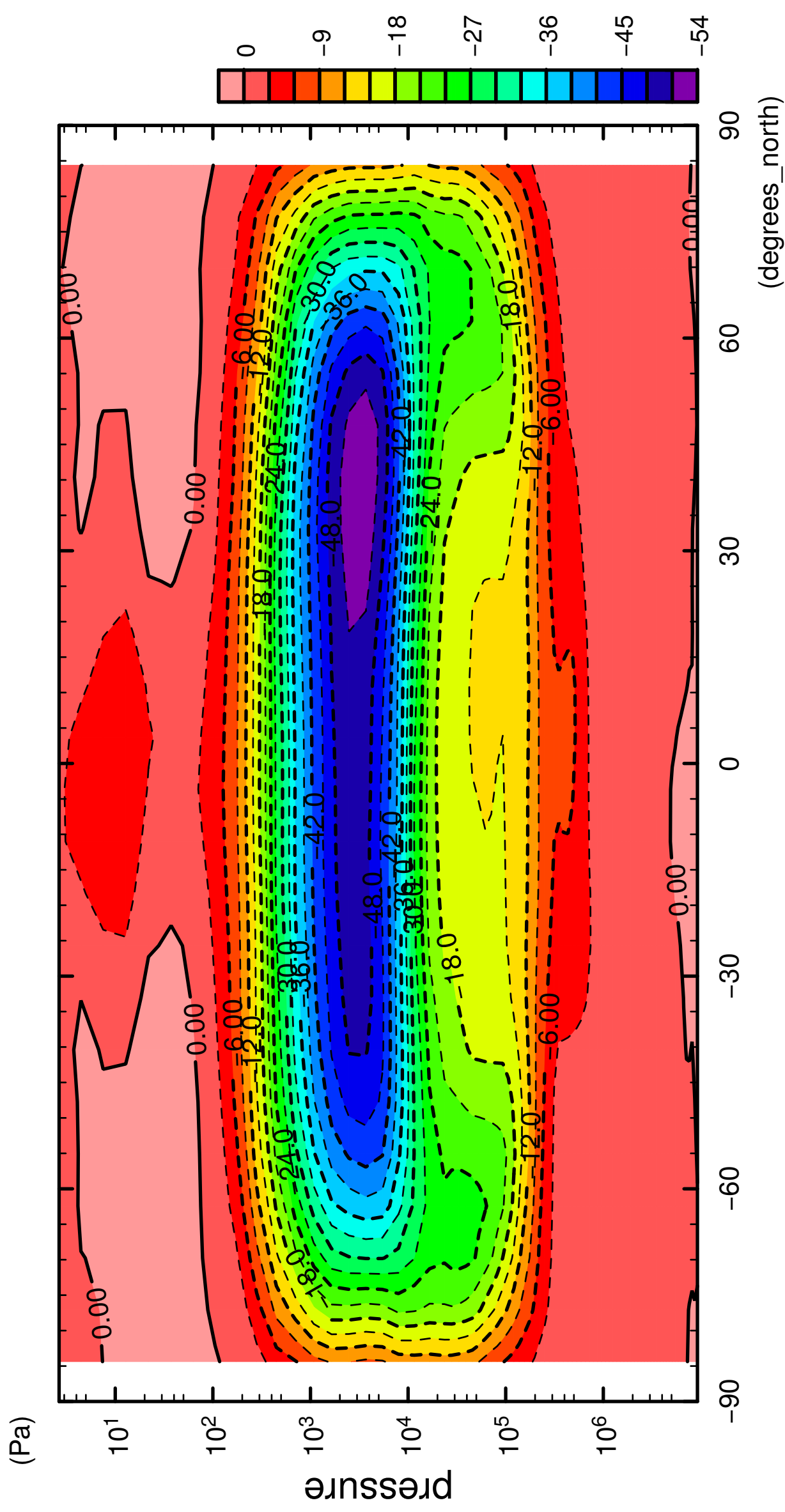
U



CONTOUR INTERVAL = 3.000E+00

8/10

U



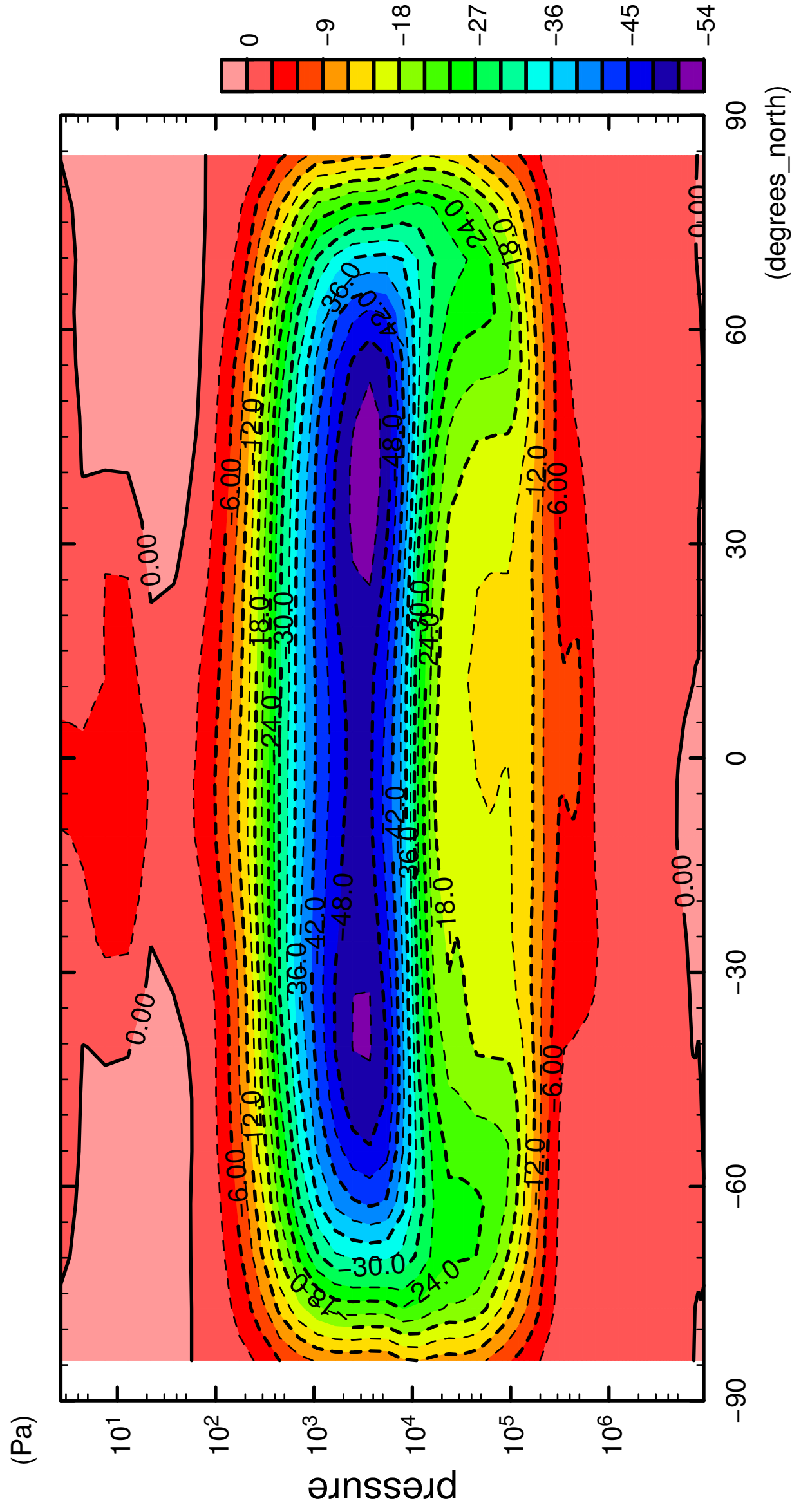
latitude

CONTOUR INTERVAL = 3.000E+00



9/10

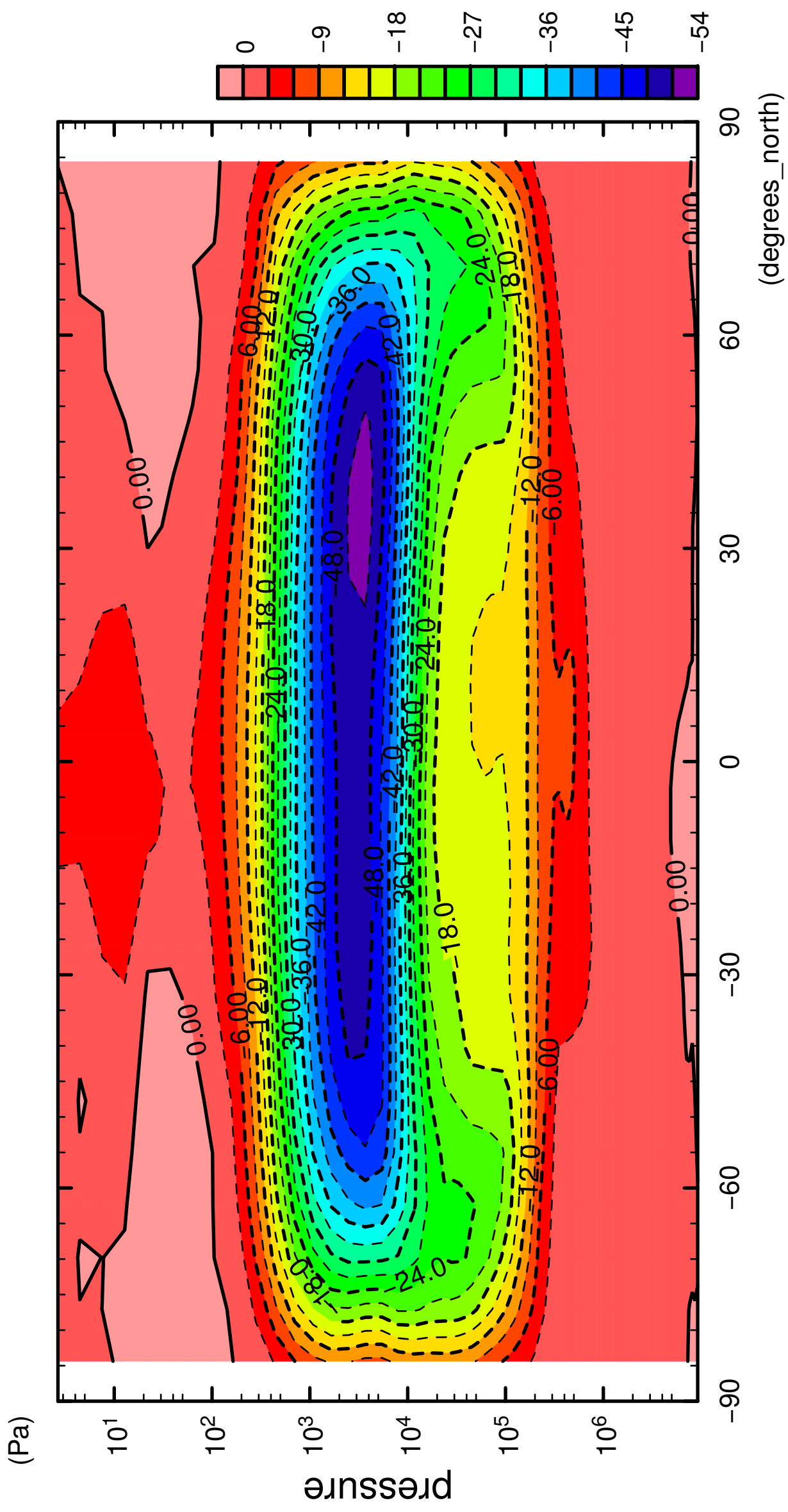
U



CONTOUR INTERVAL = 3.000E+00

10/10

U



CONTOUR INTERVAL = 3.000E+00