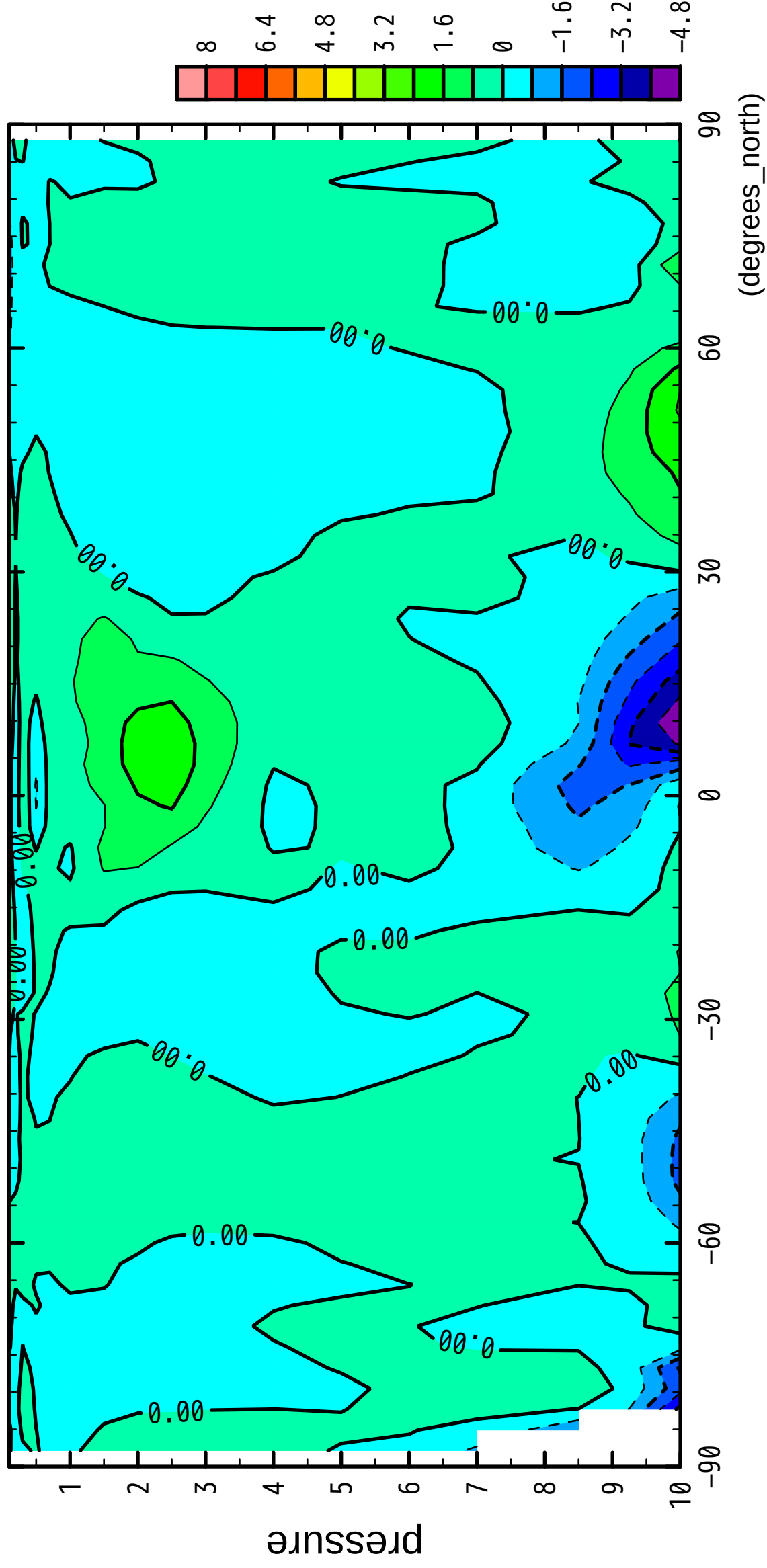


1/12

V

($\times 10^4$ Pa)



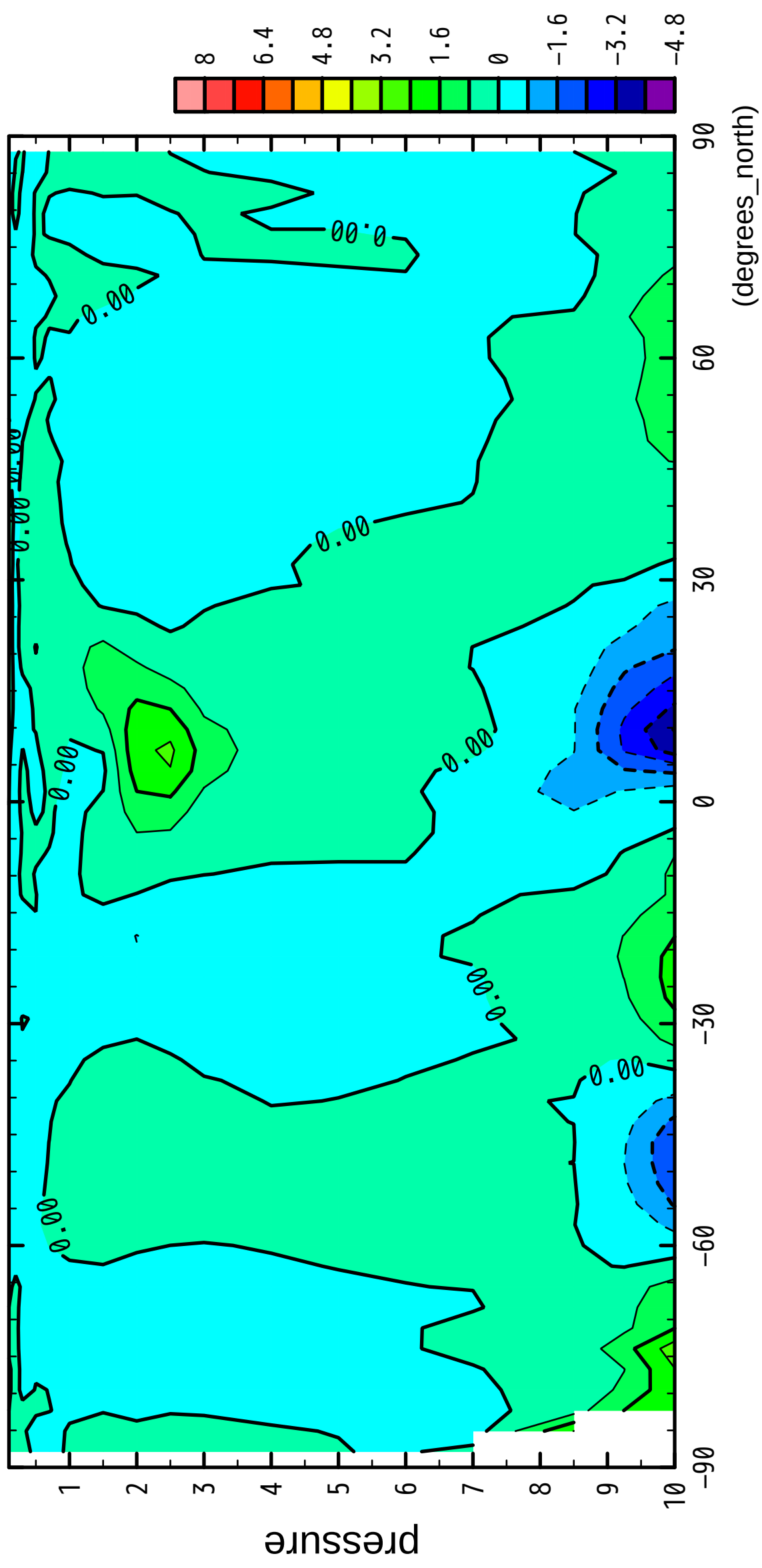
latitude

CONTOUR INTERVAL = 8.000E-01

3/12

V

($\times 10^4$ Pa)



latitude

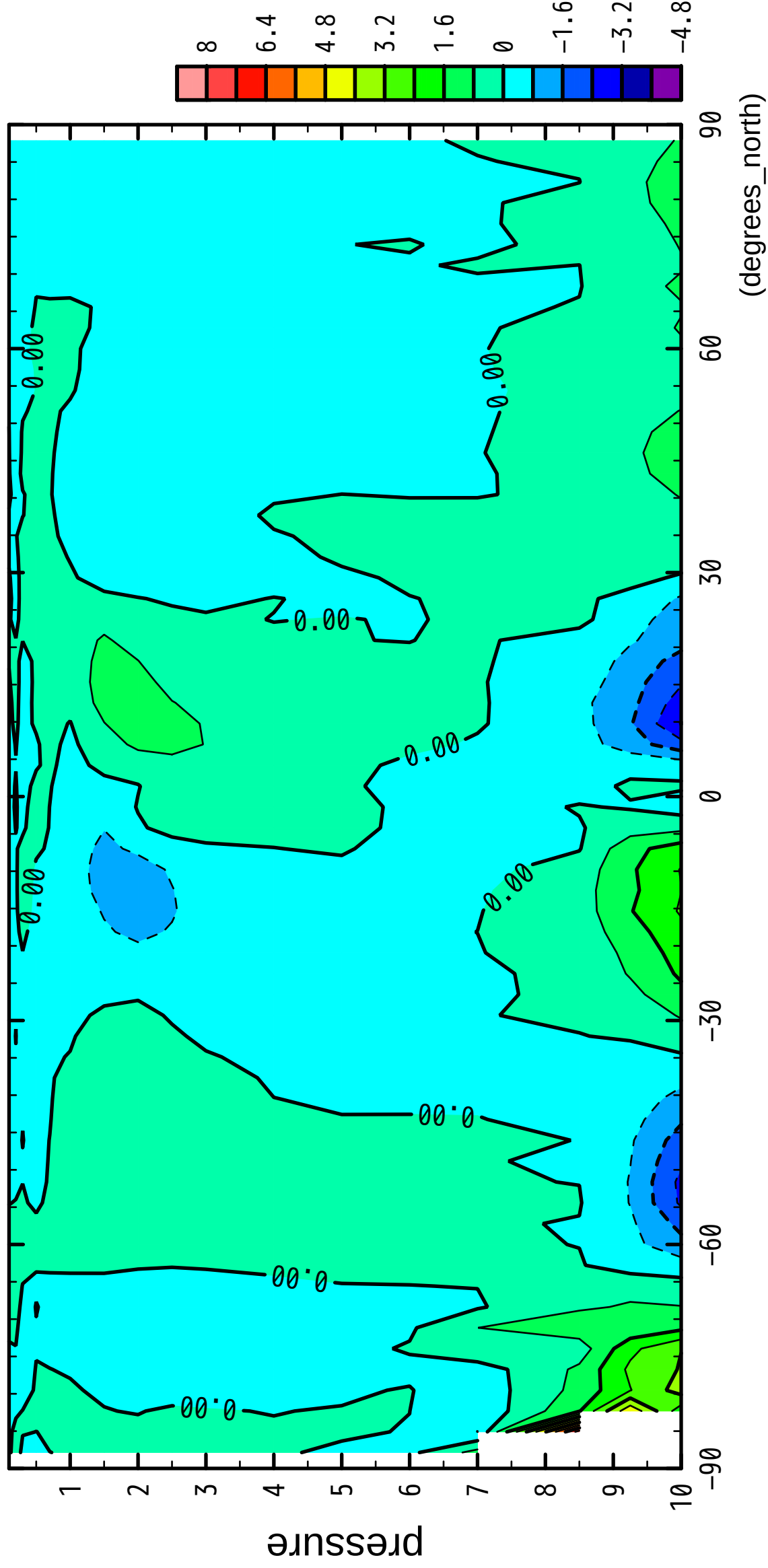
(degrees_north)

CONTOUR INTERVAL = 8.000E-01

4/12

V

($\times 10^4$ Pa)

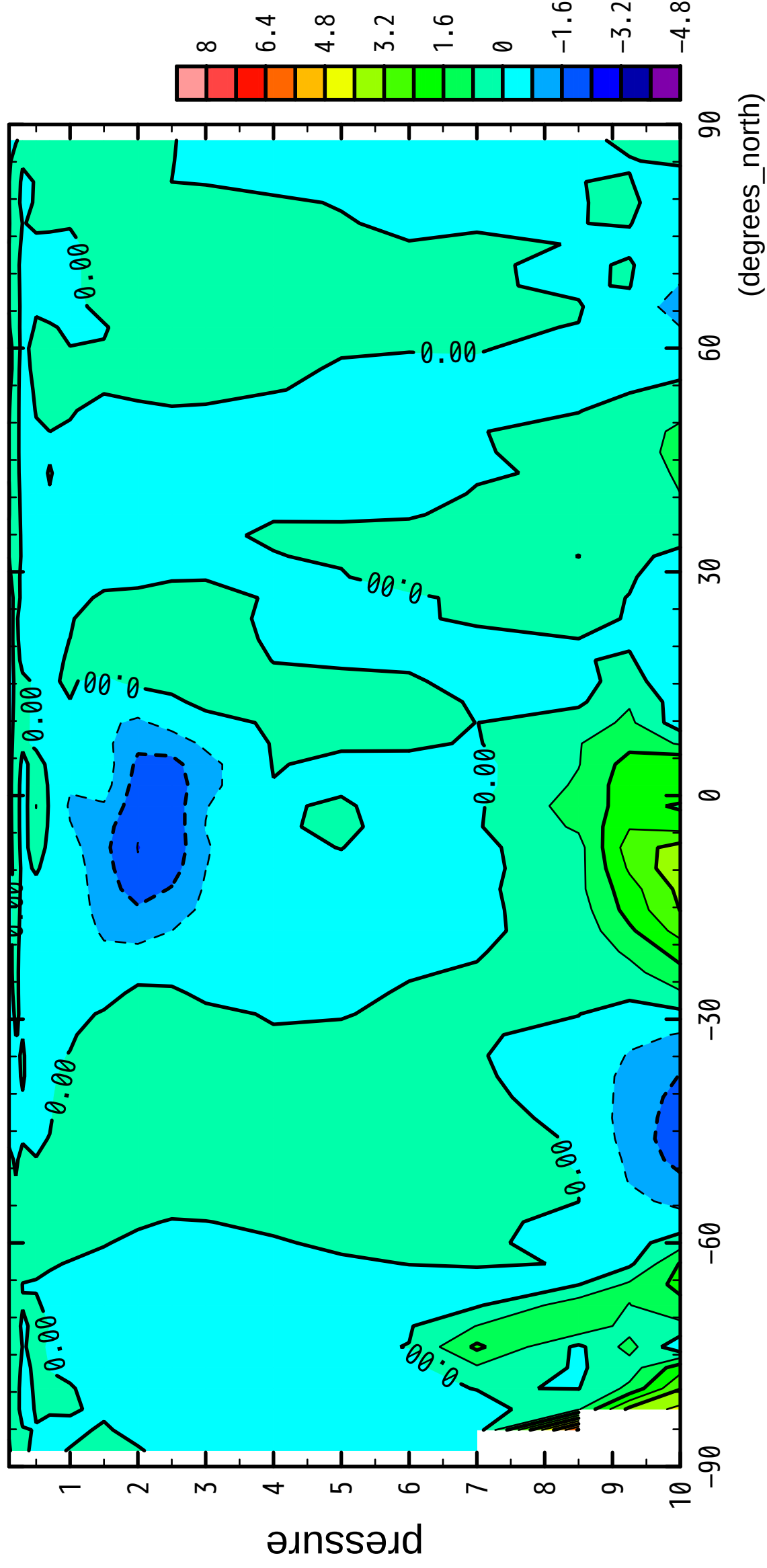


CONTOUR INTERVAL = 8.000E-01

6/12

V

($\times 10^4$ Pa)



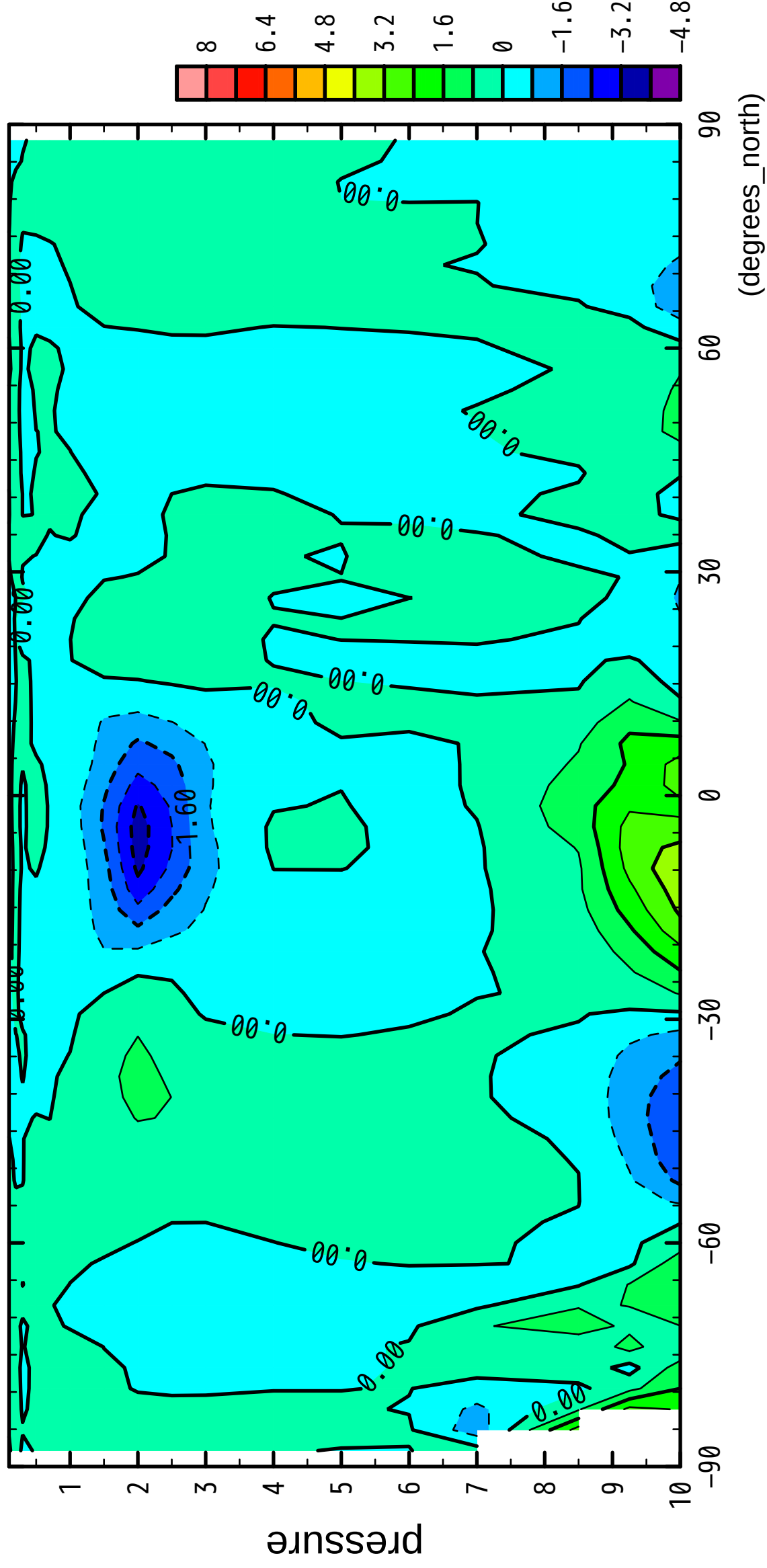
latitude

CONTOUR INTERVAL = 8.000E-01

7/12

V

($\times 10^4$ Pa)



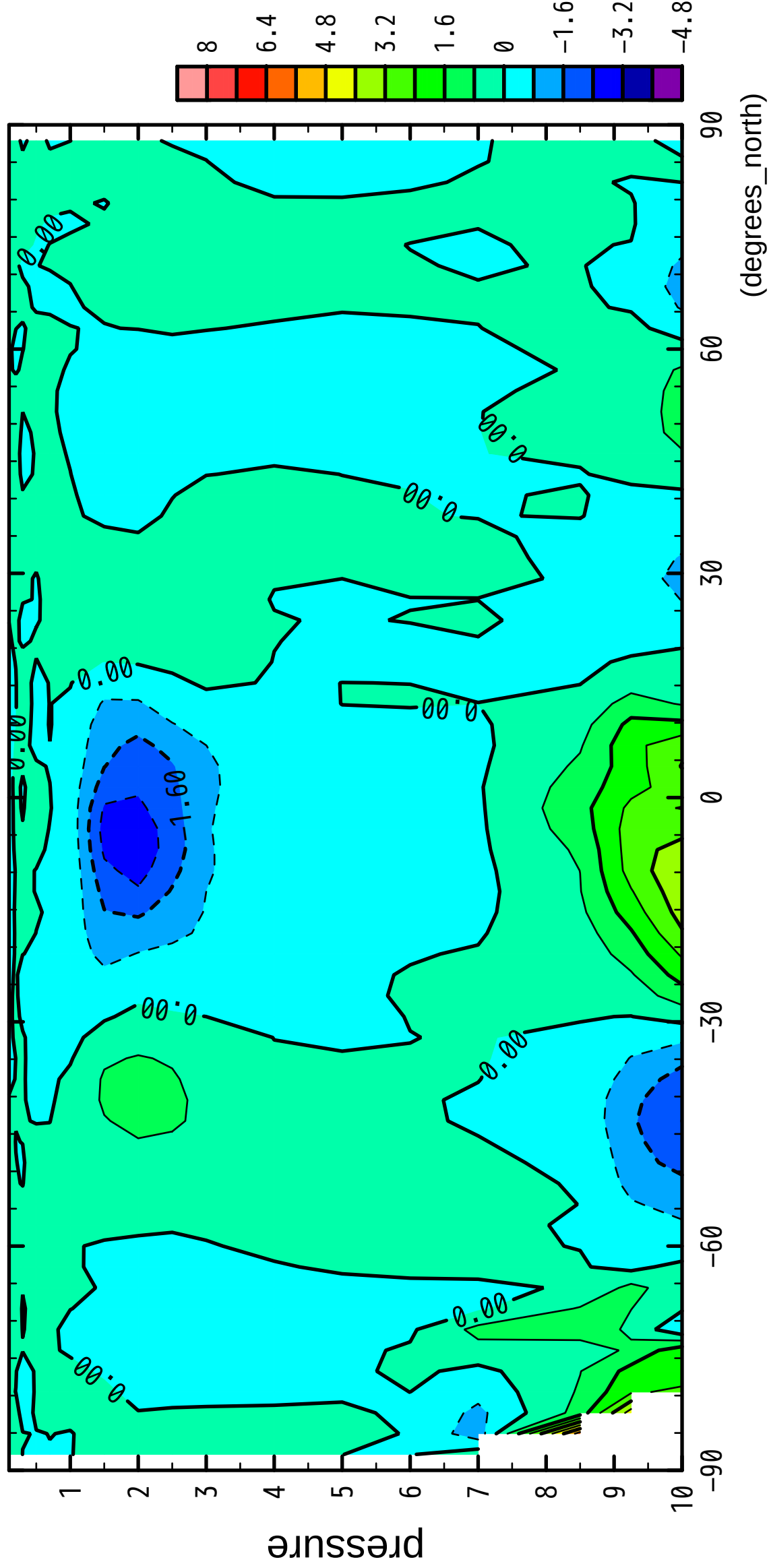
latitude

CONTOUR INTERVAL = 8.000E-01

8/12

V

($\times 10^4$ Pa)



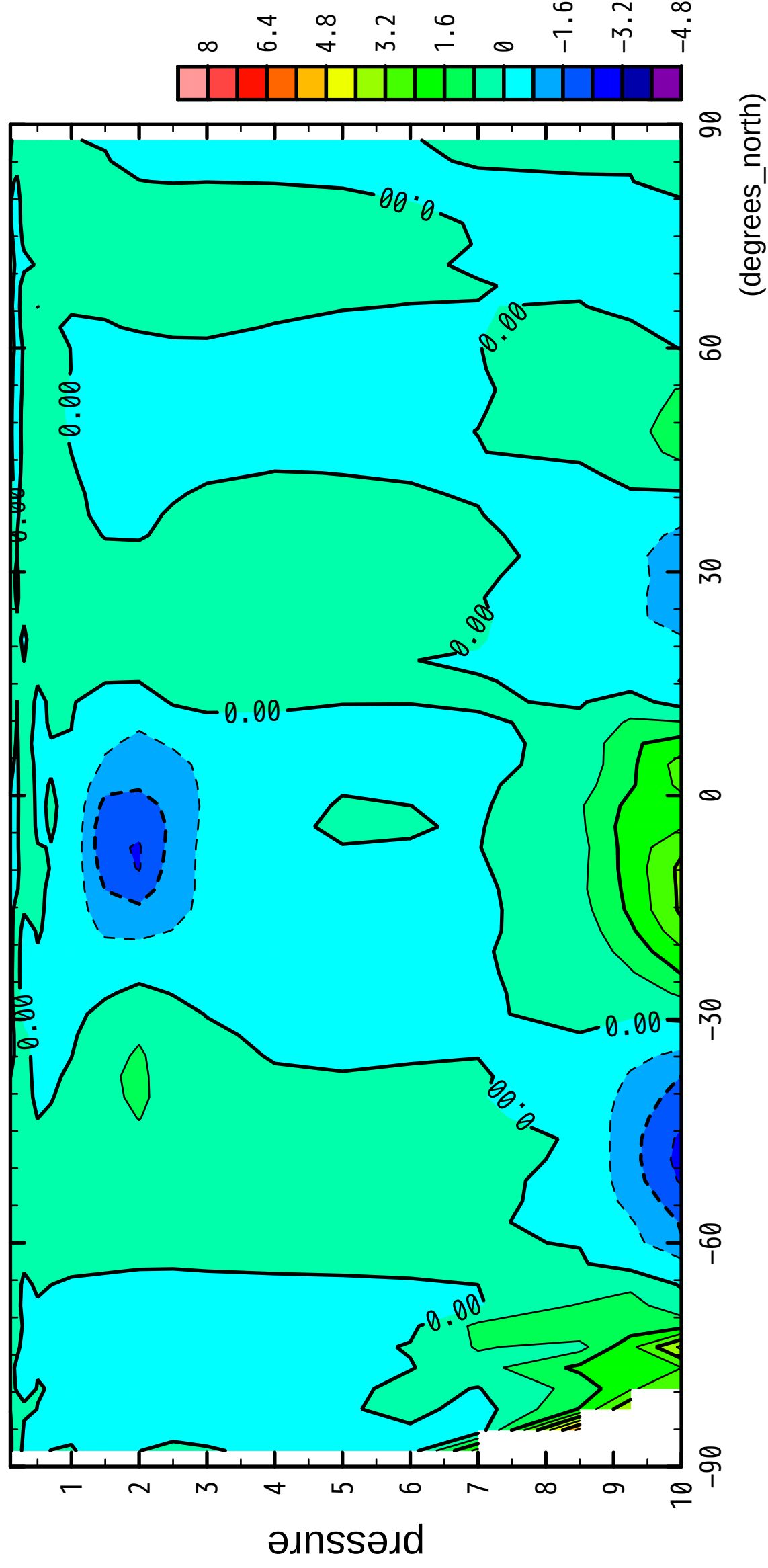
latitude

CONTOUR INTERVAL = 8.000E-01

9/12

V

($\times 10^4$ Pa)



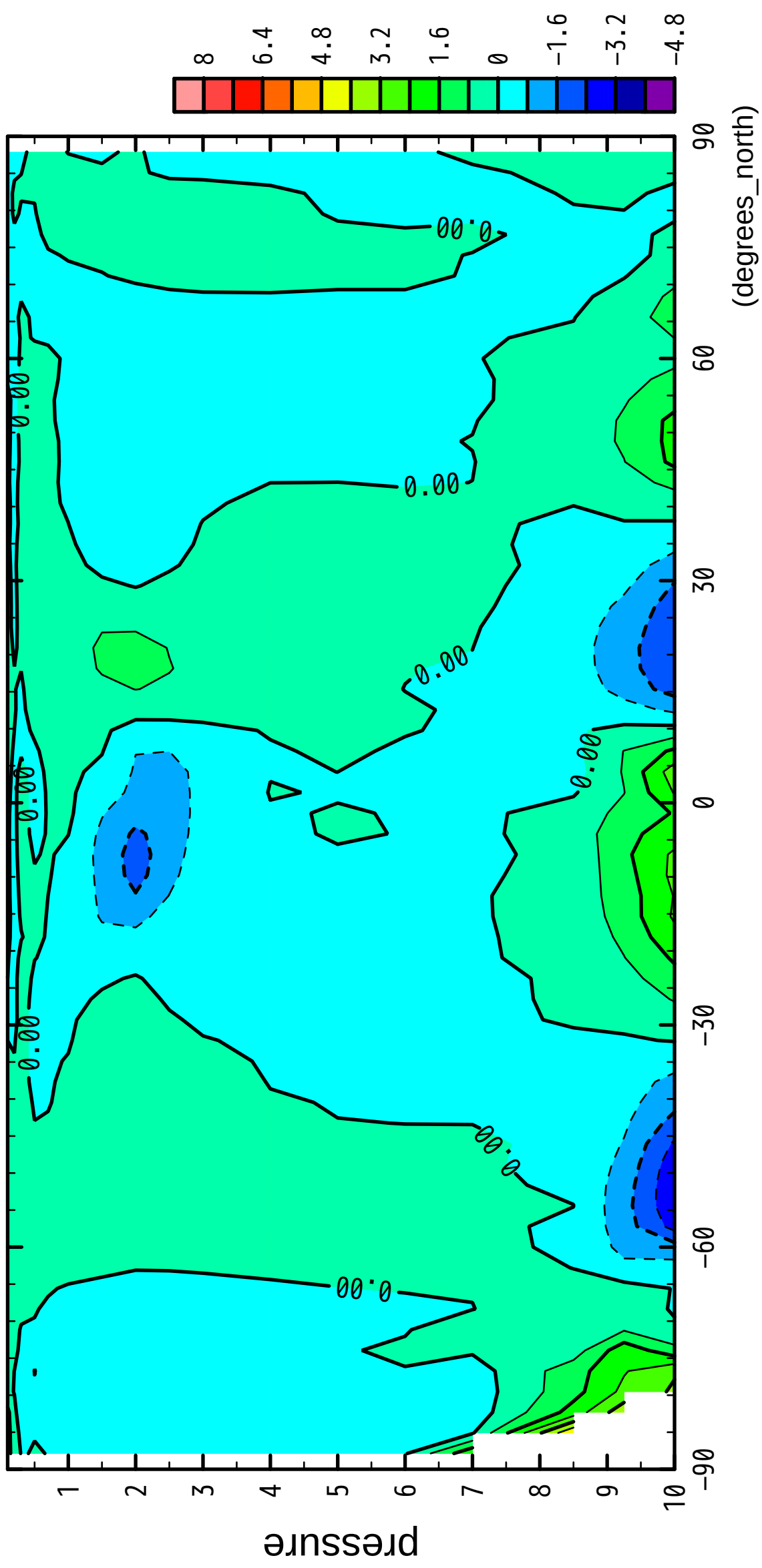
latitude

CONTOUR INTERVAL = 8.000E-01

10/12

V

($\times 10^4$ Pa)



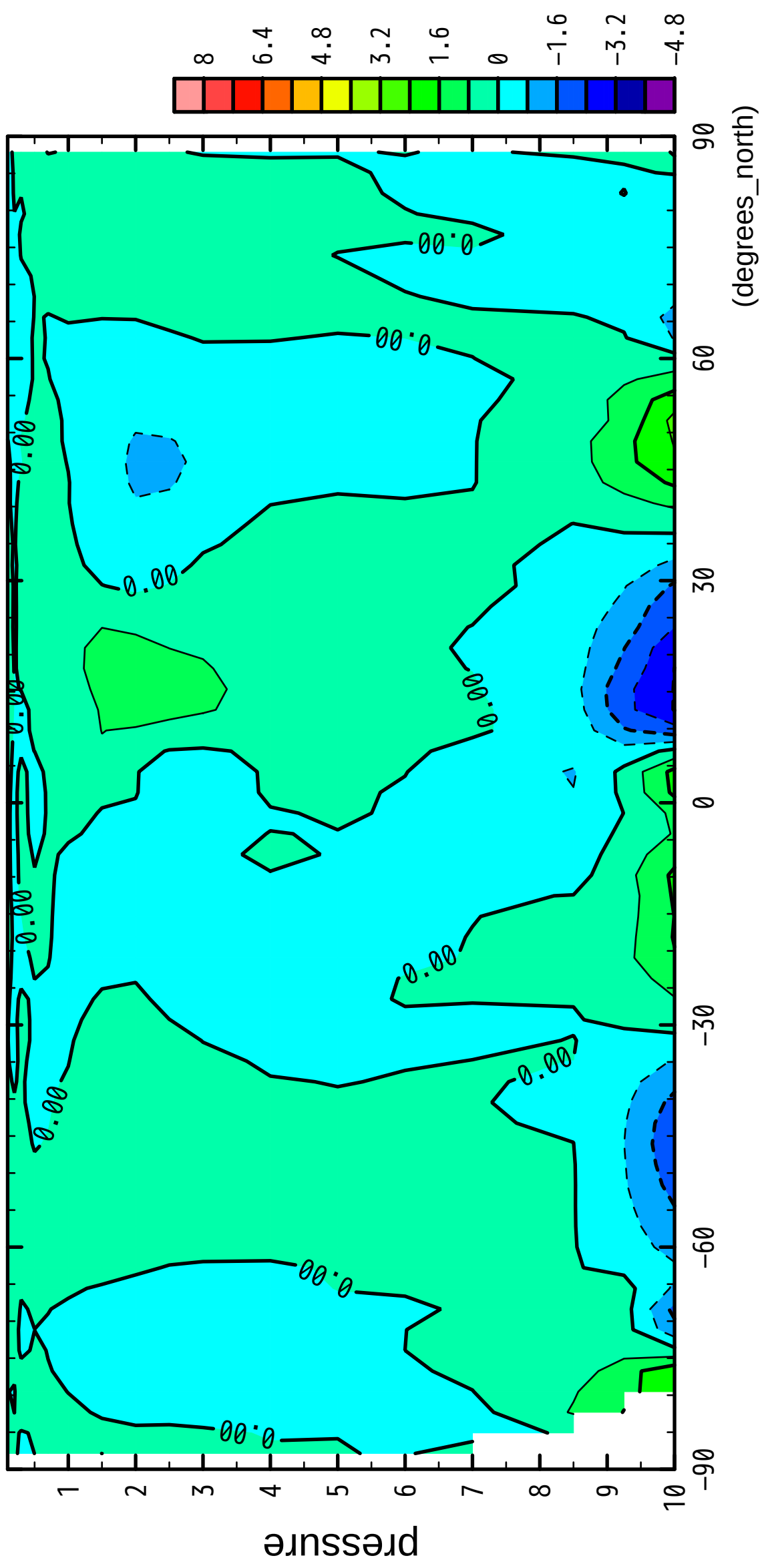
latitude

CONTOUR INTERVAL = 8.000E-01

11/12

V

($\times 10^4$ Pa)



latitude

CONTOUR INTERVAL = 8.000E-01

