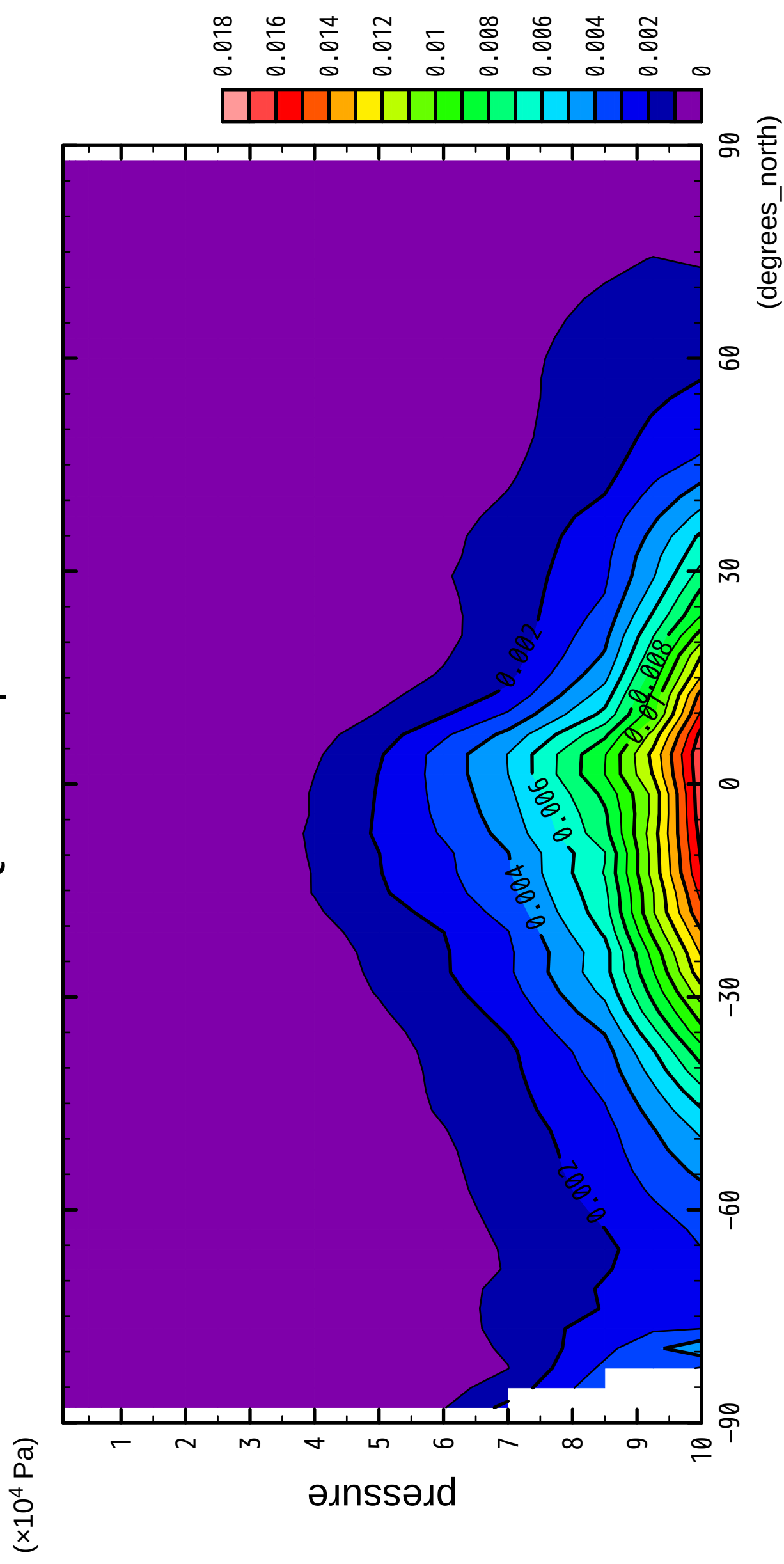


1/12

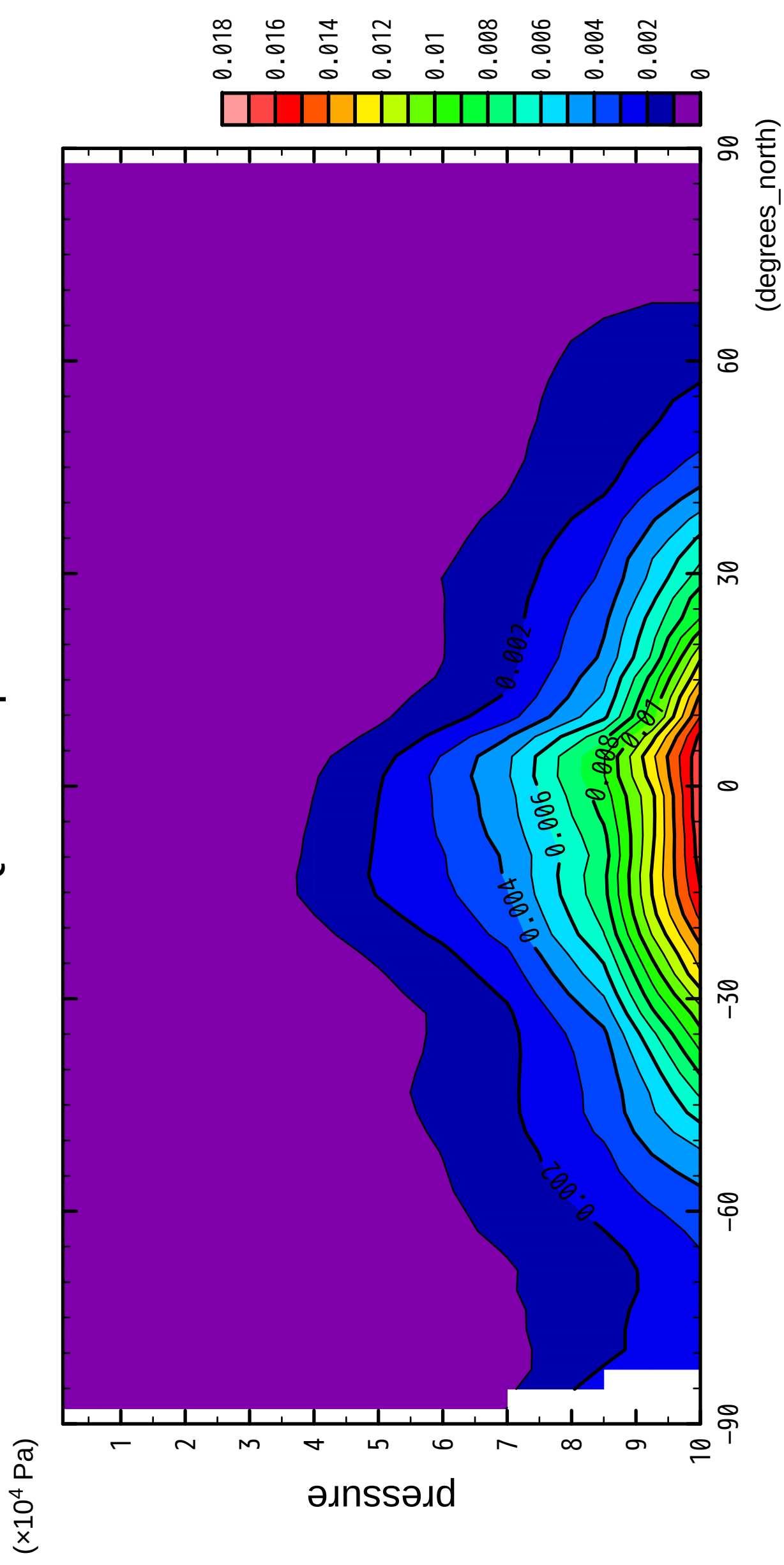
QH2OVap



CONTOUR INTERVAL = 1.000E-03

2/12

QH2OVap

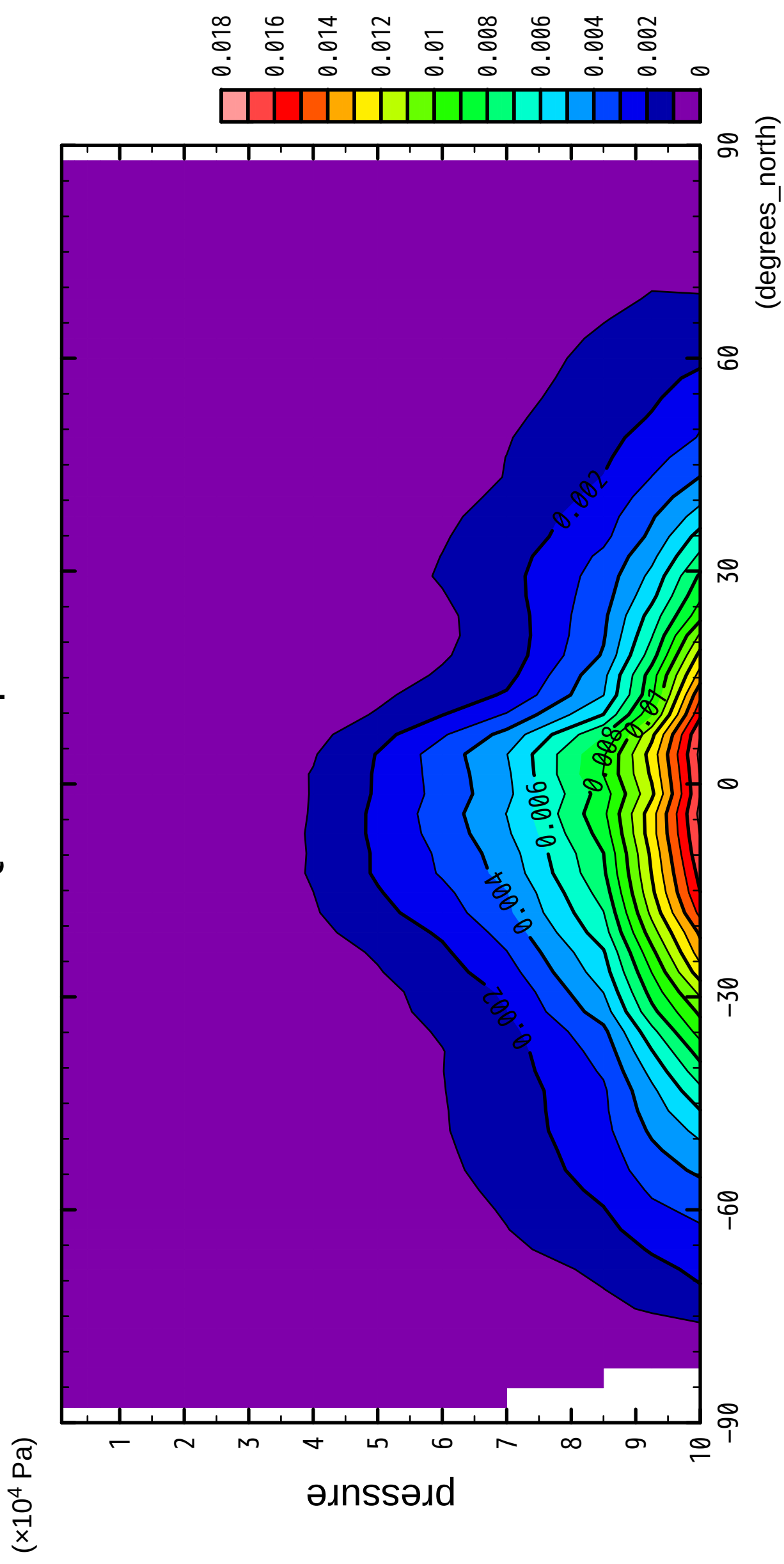


latitude

CONTOUR INTERVAL = 1.000E-03

3/12

QH2OVap

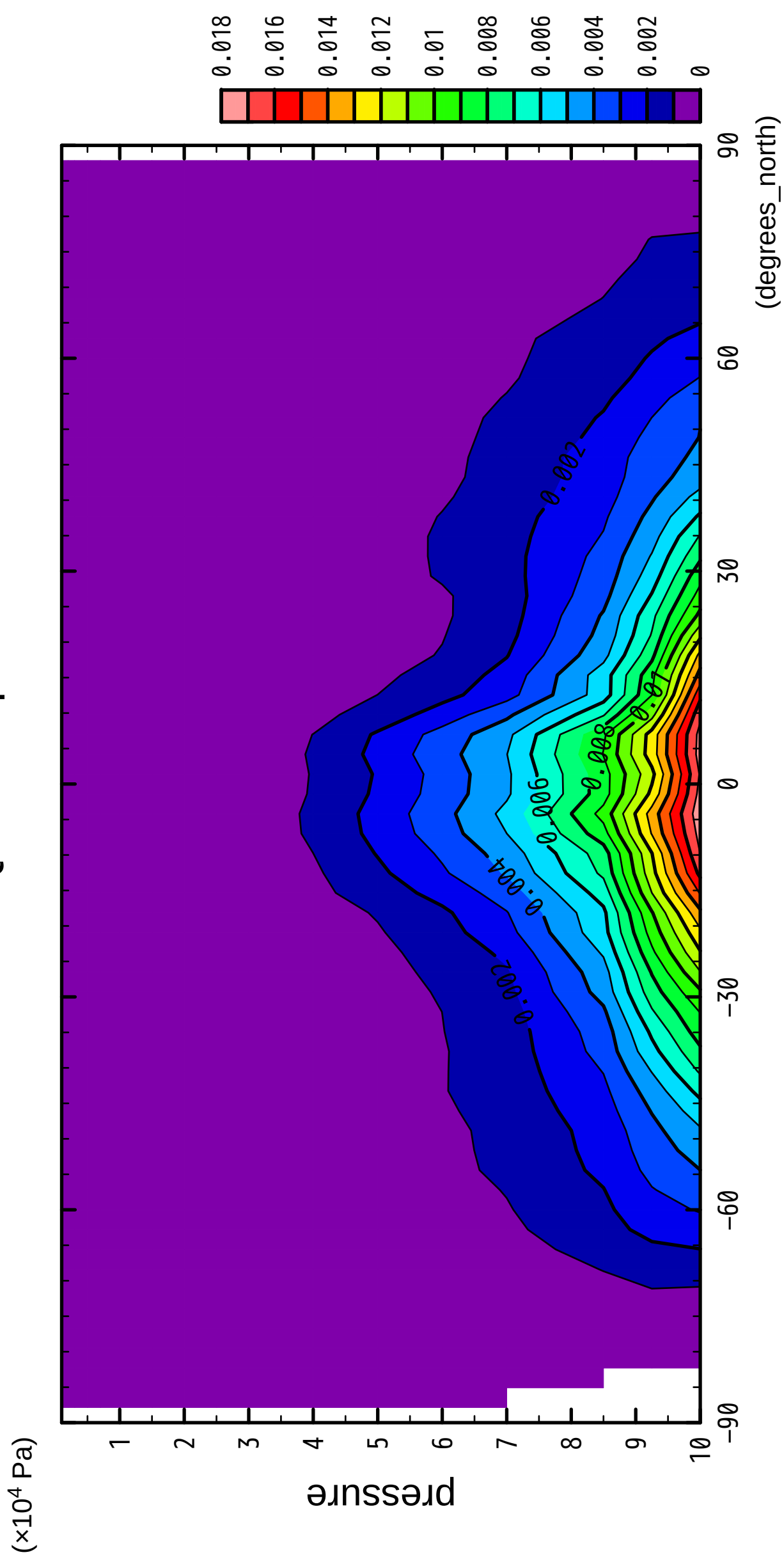


latitude

CONTOUR INTERVAL = 1.000E-03

4/12

QH2OVap

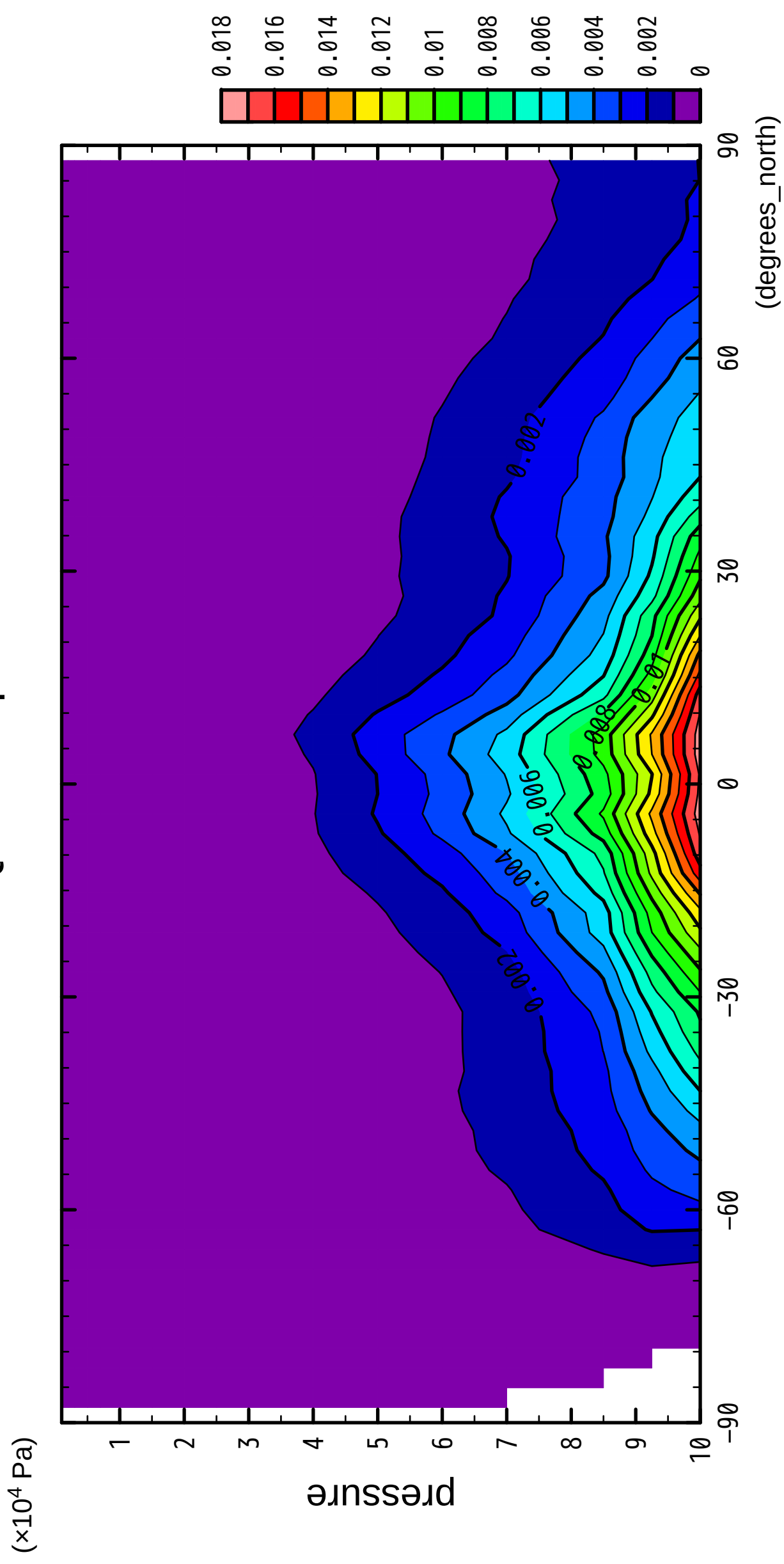


latitude

CONTOUR INTERVAL = 1.000E-03

5/12

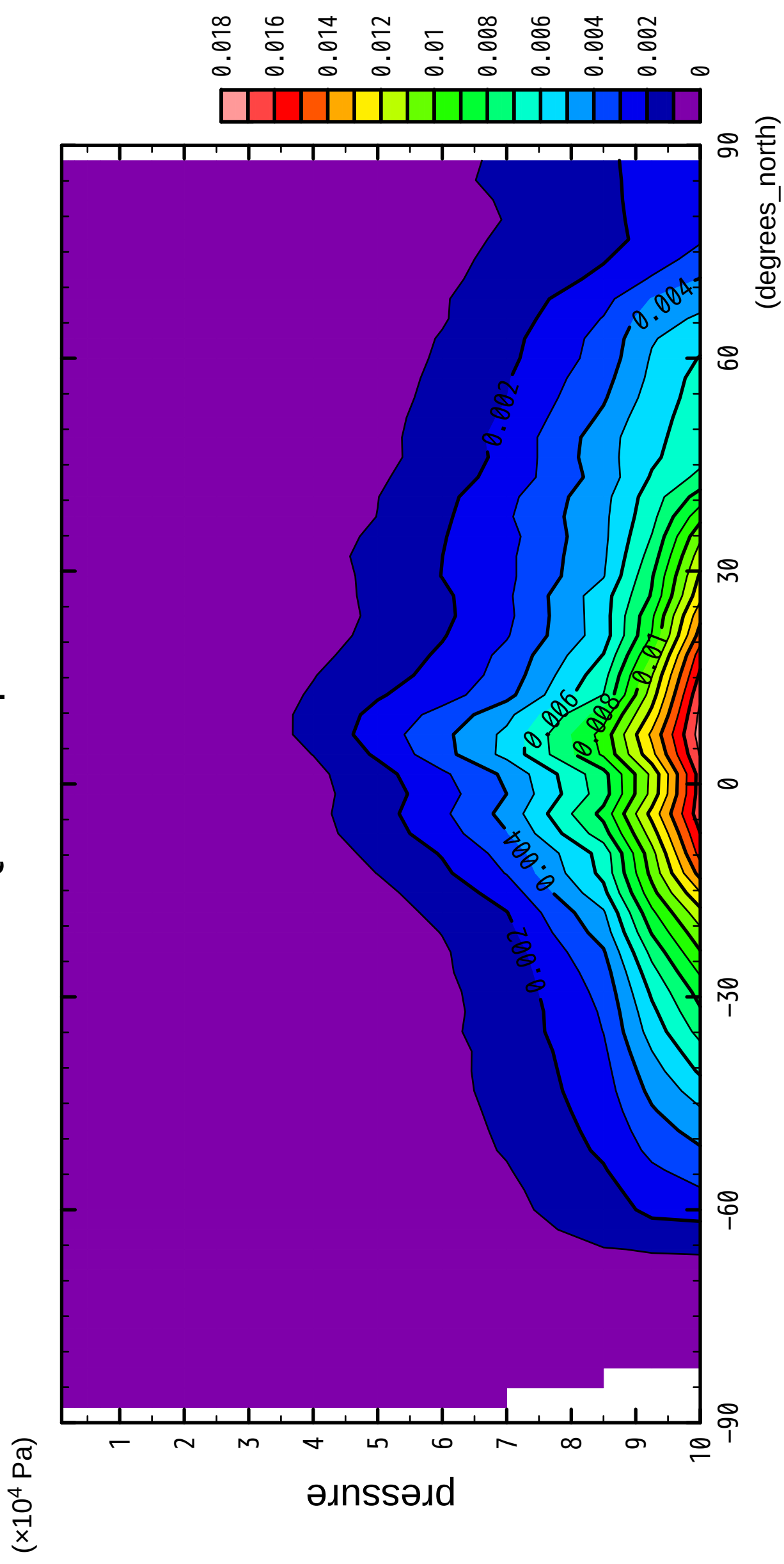
QH2OVap



CONTOUR INTERVAL = 1.000E-03

6/12

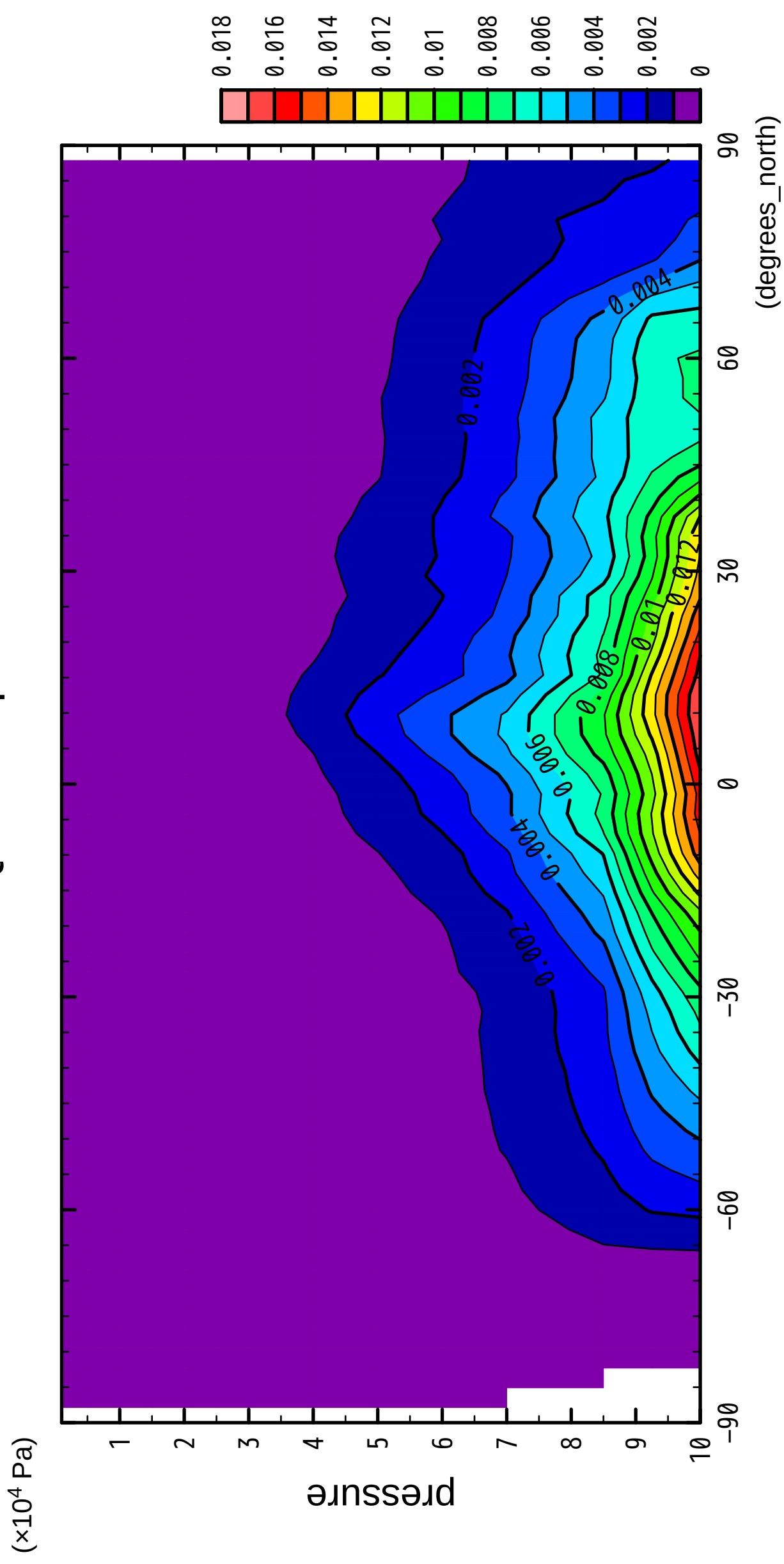
QH2OVap



CONTOUR INTERVAL = 1.000E-03

7/12

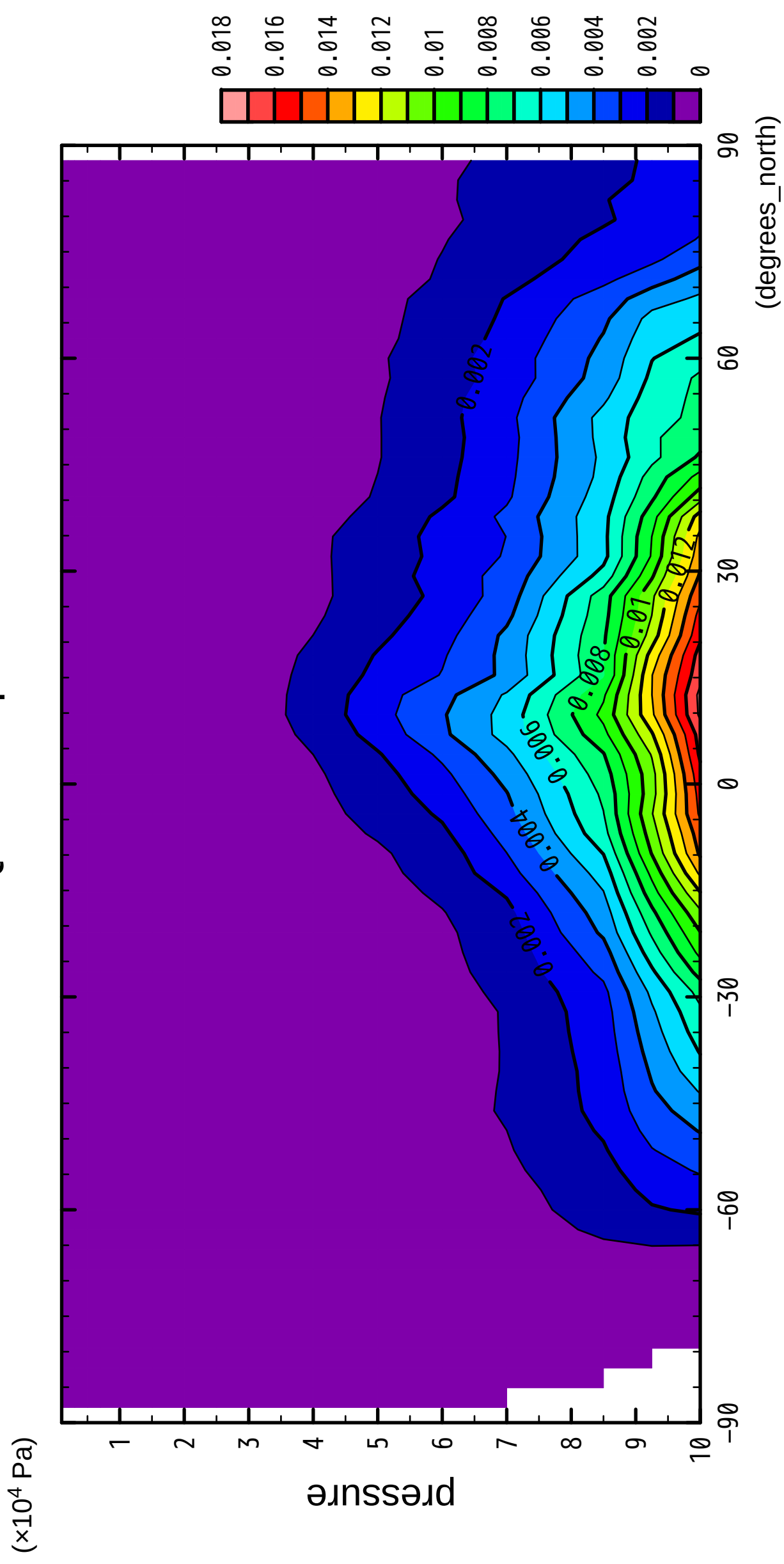
QH2OVap



CONTOUR INTERVAL = 1.000E-03

8/12

QH2OVap



latitude

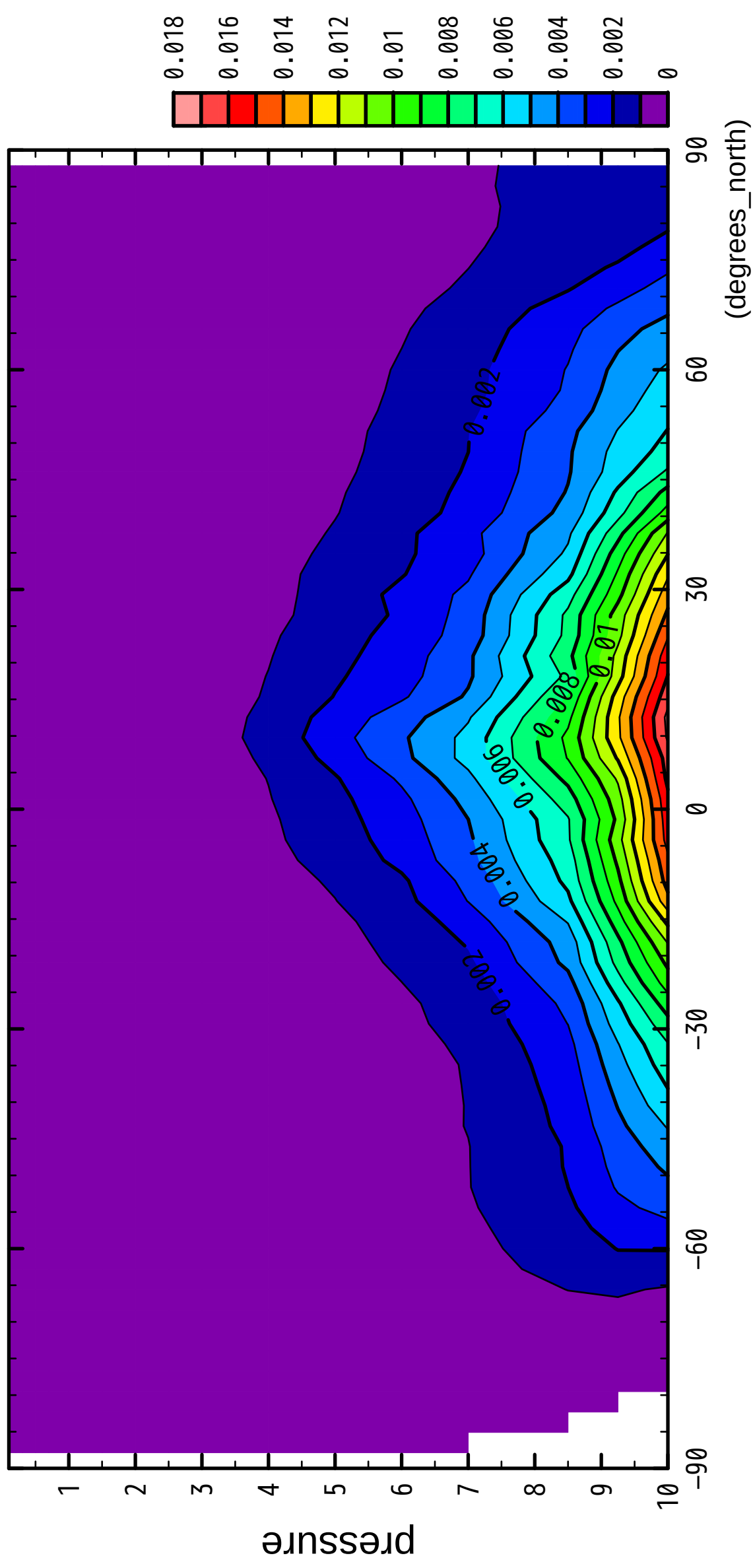
CONTOUR INTERVAL = 1.000E-03



9/12

QH2OVap

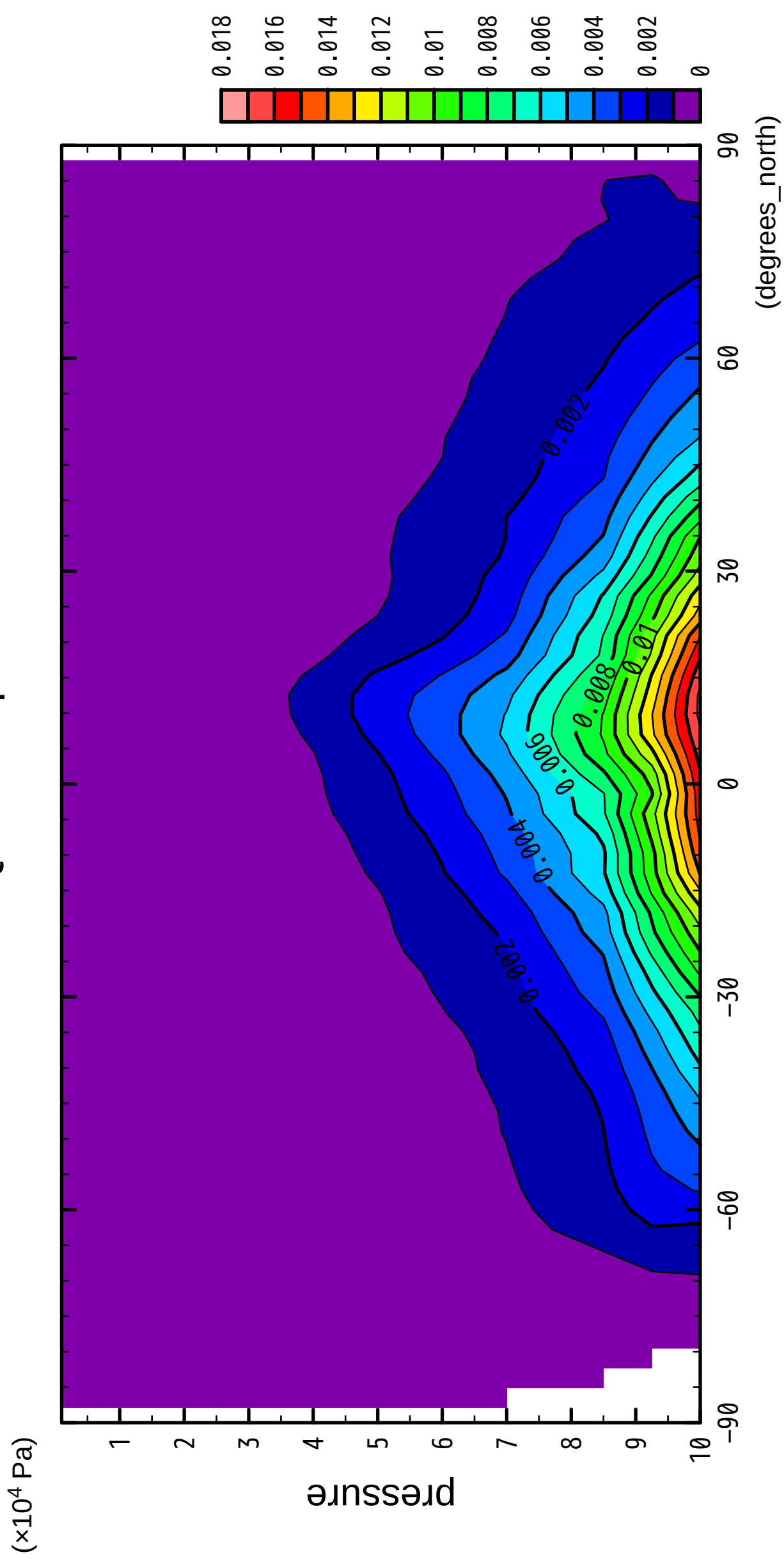
( $\times 10^4$  Pa)



CONTOUR INTERVAL = 1.000E-03

10/12

QH2OVap

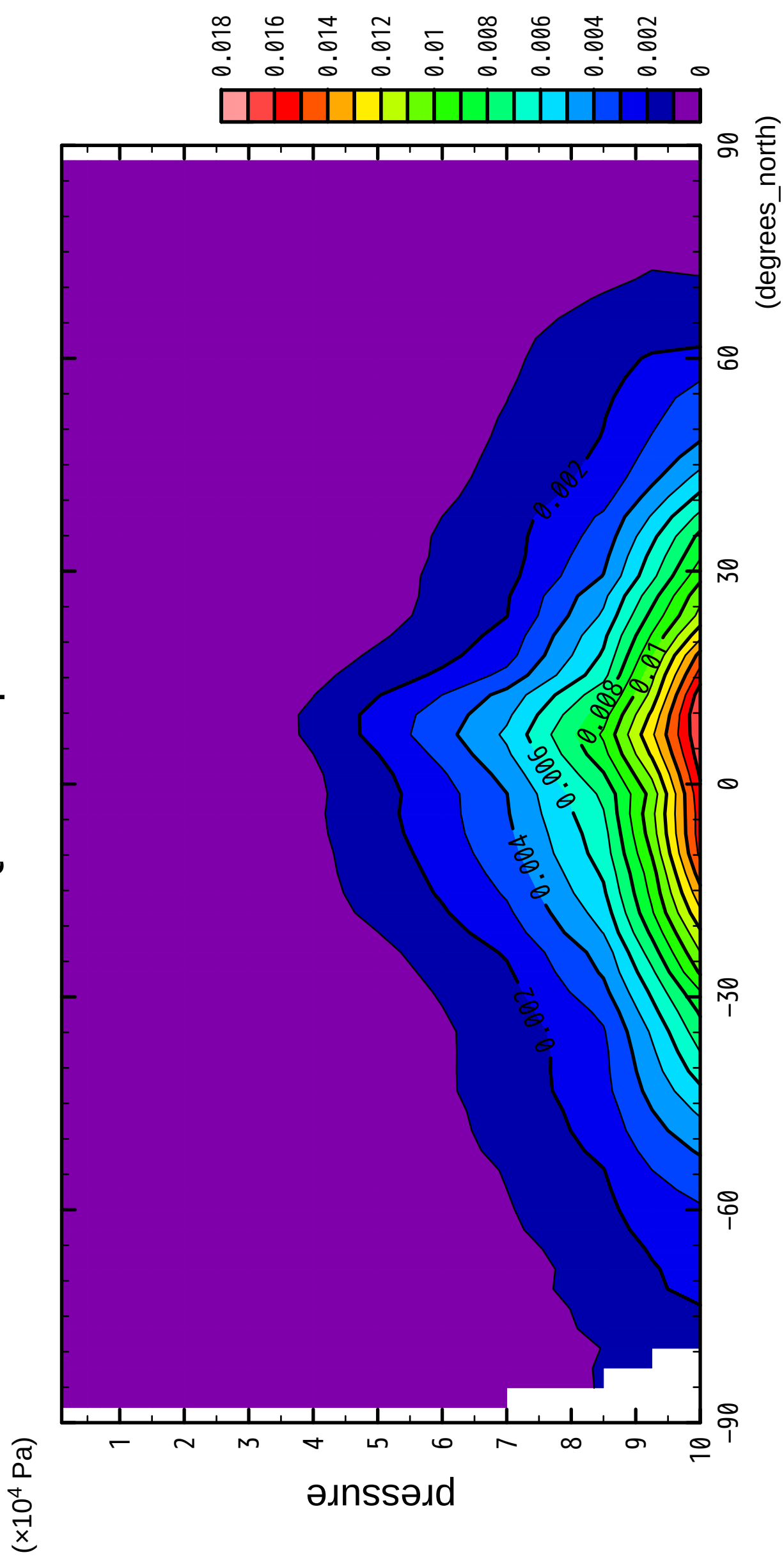


latitude

CONTOUR INTERVAL = 1.000E-03

11/12

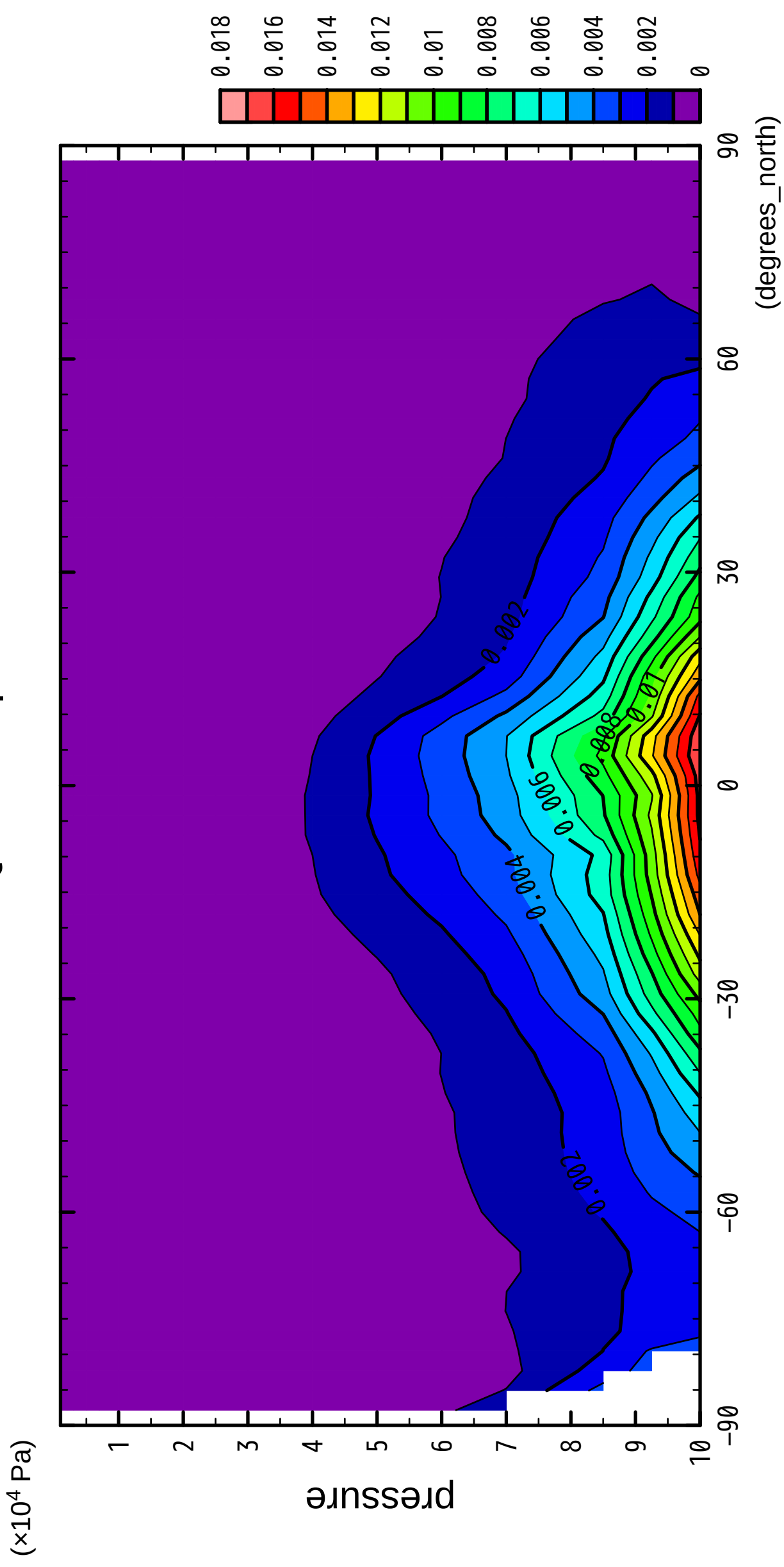
QH2OVap



CONTOUR INTERVAL = 1.000E-03

12/12

QH2OVap



CONTOUR INTERVAL = 1.000E-03