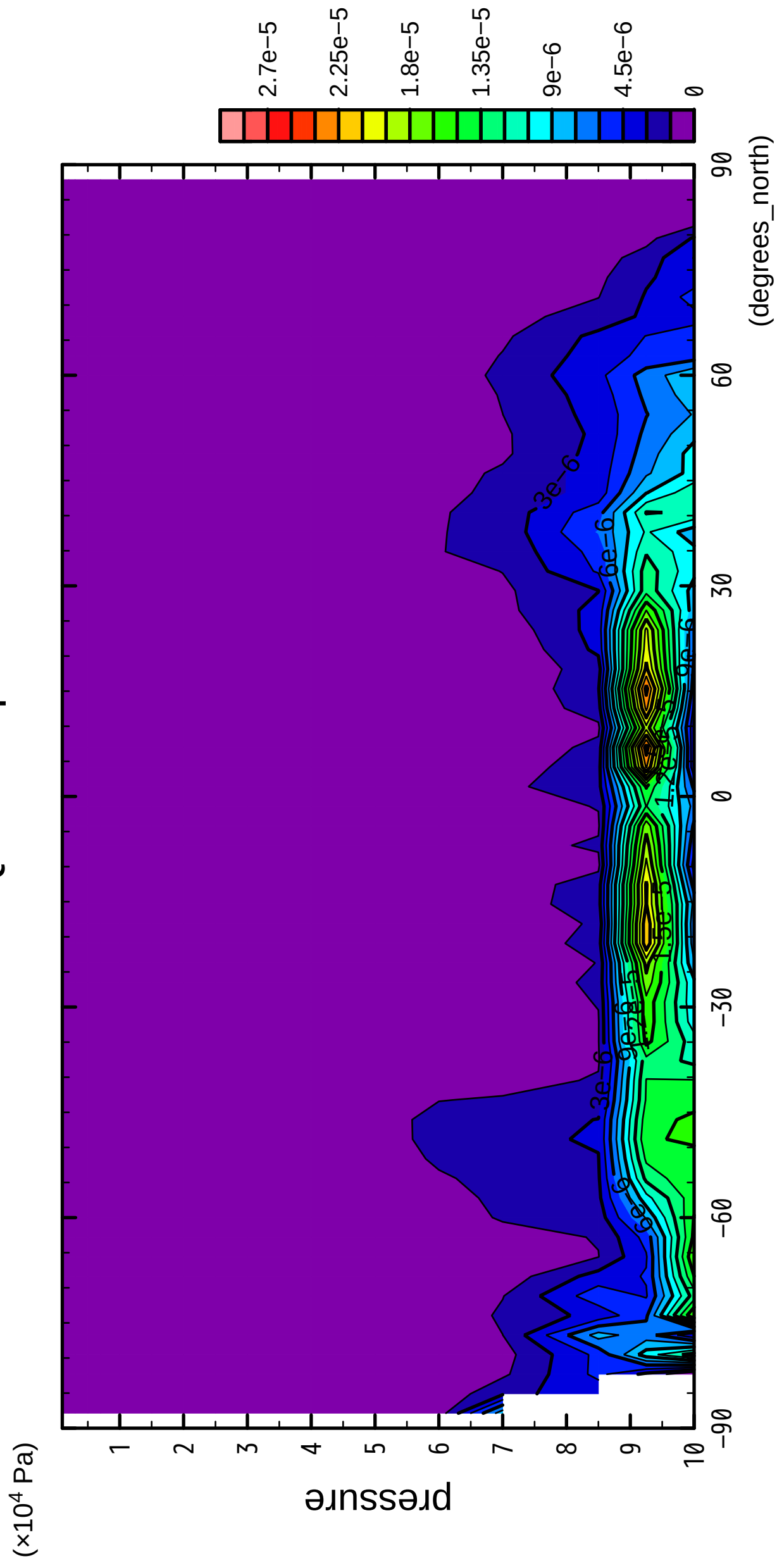


1/12

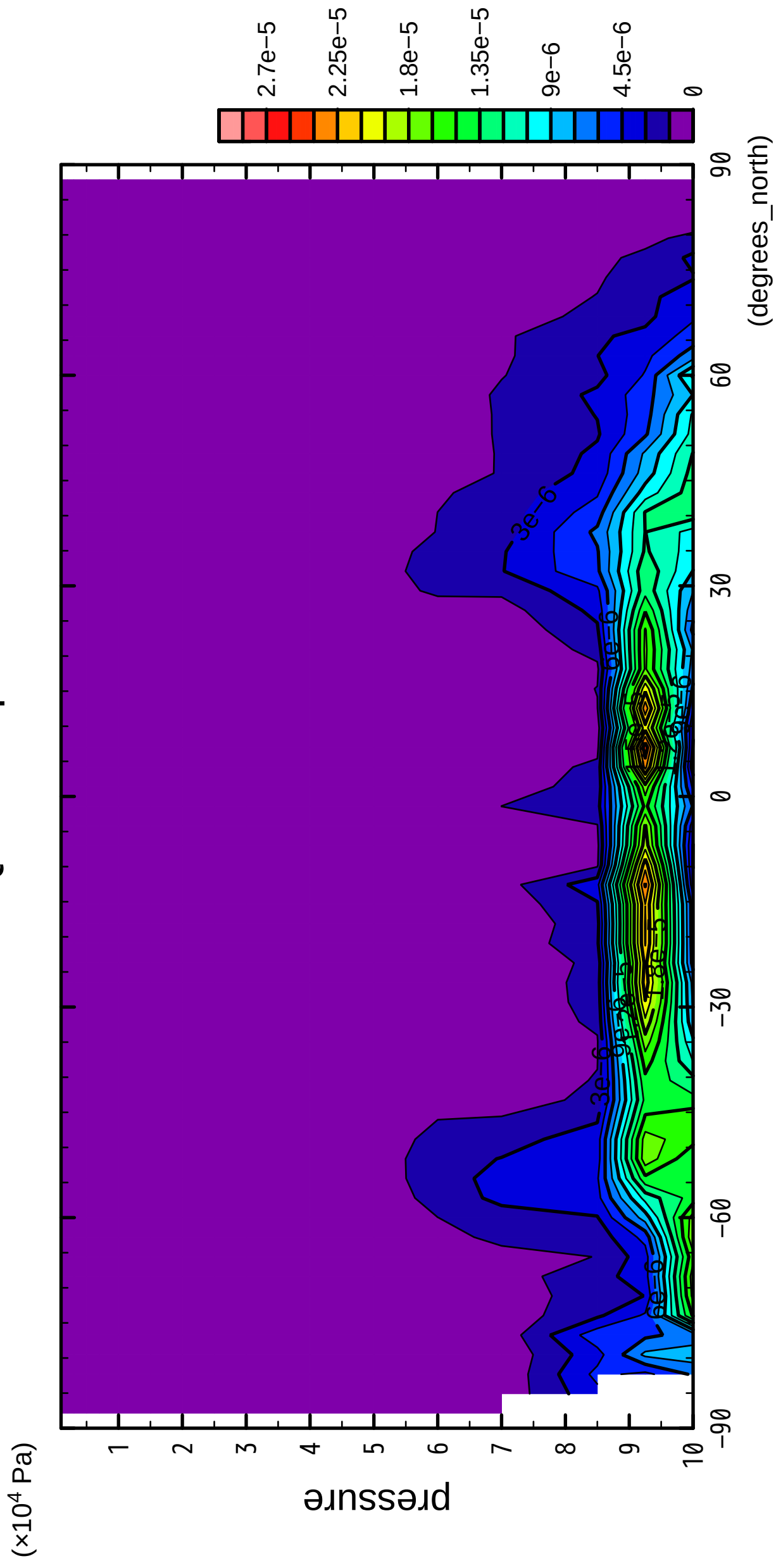
QH2OLiq



CONTOUR INTERVAL = 1.500E-06

2/12

QH2OLiq

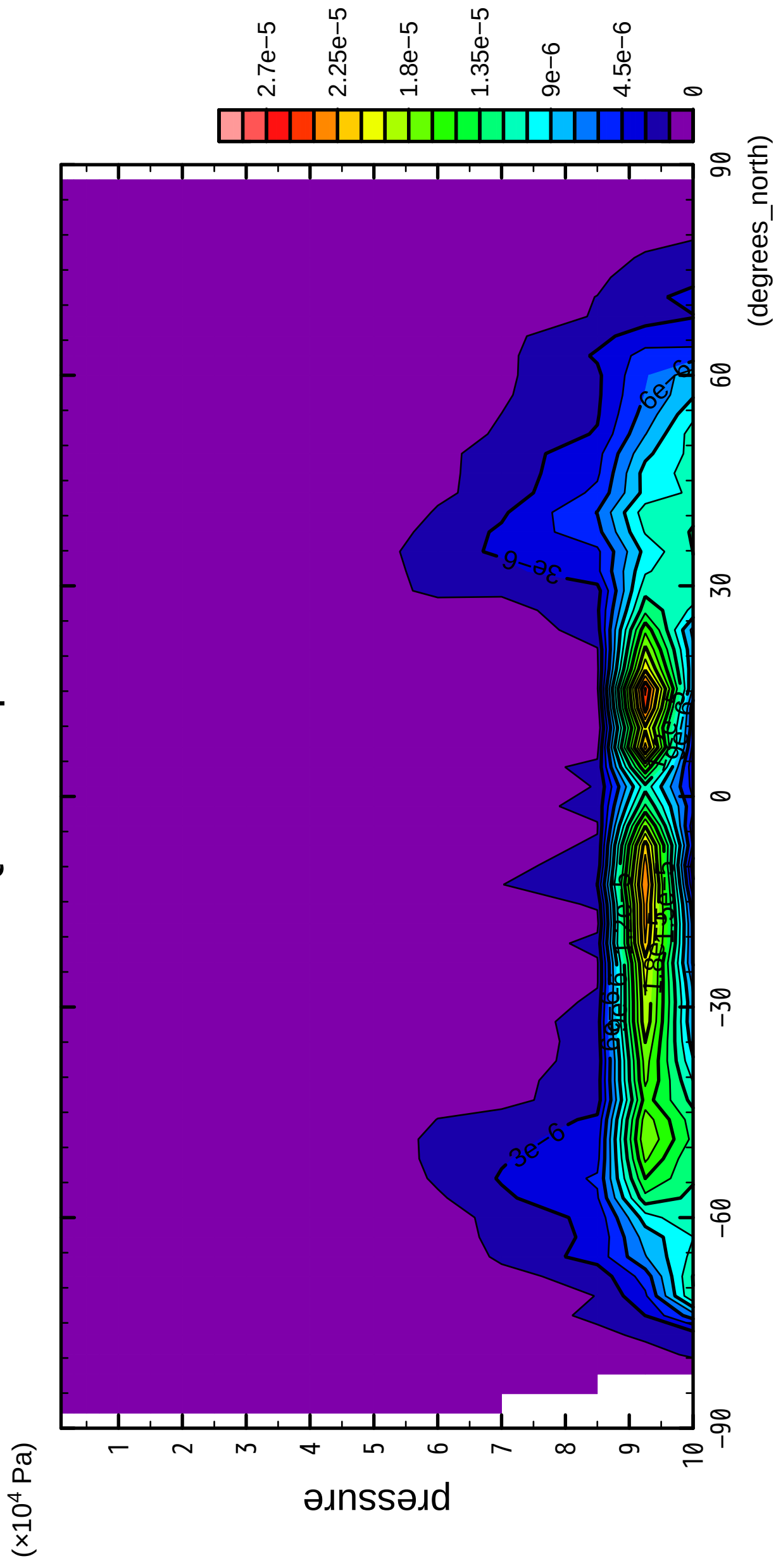


latitude

CONTOUR INTERVAL = 1.500×10^{-6}

3/12

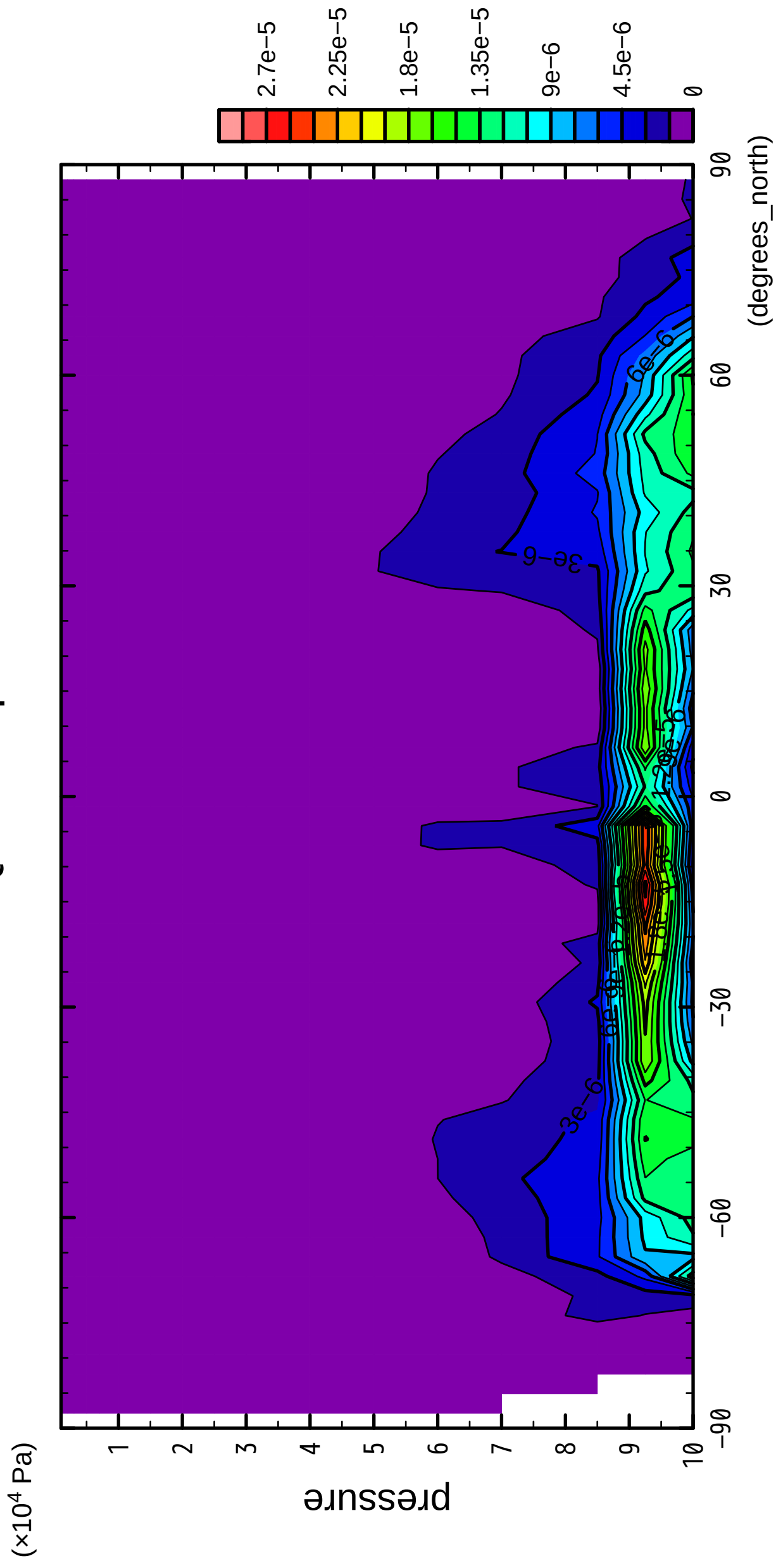
QH2OLiq



CONTOUR INTERVAL = 1.500E-06

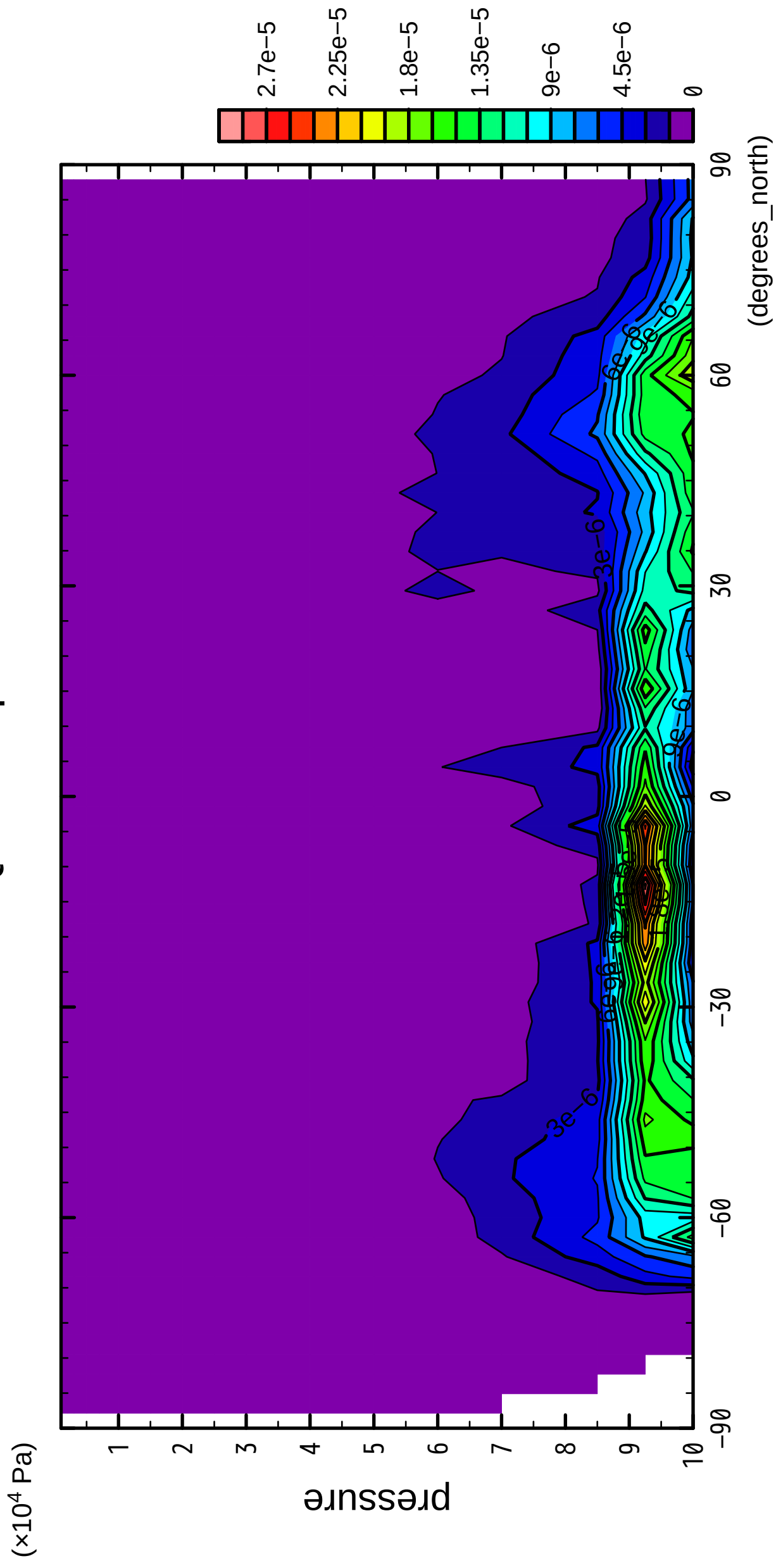
4/12

QH2OLiq



5/12

QH2OLiq

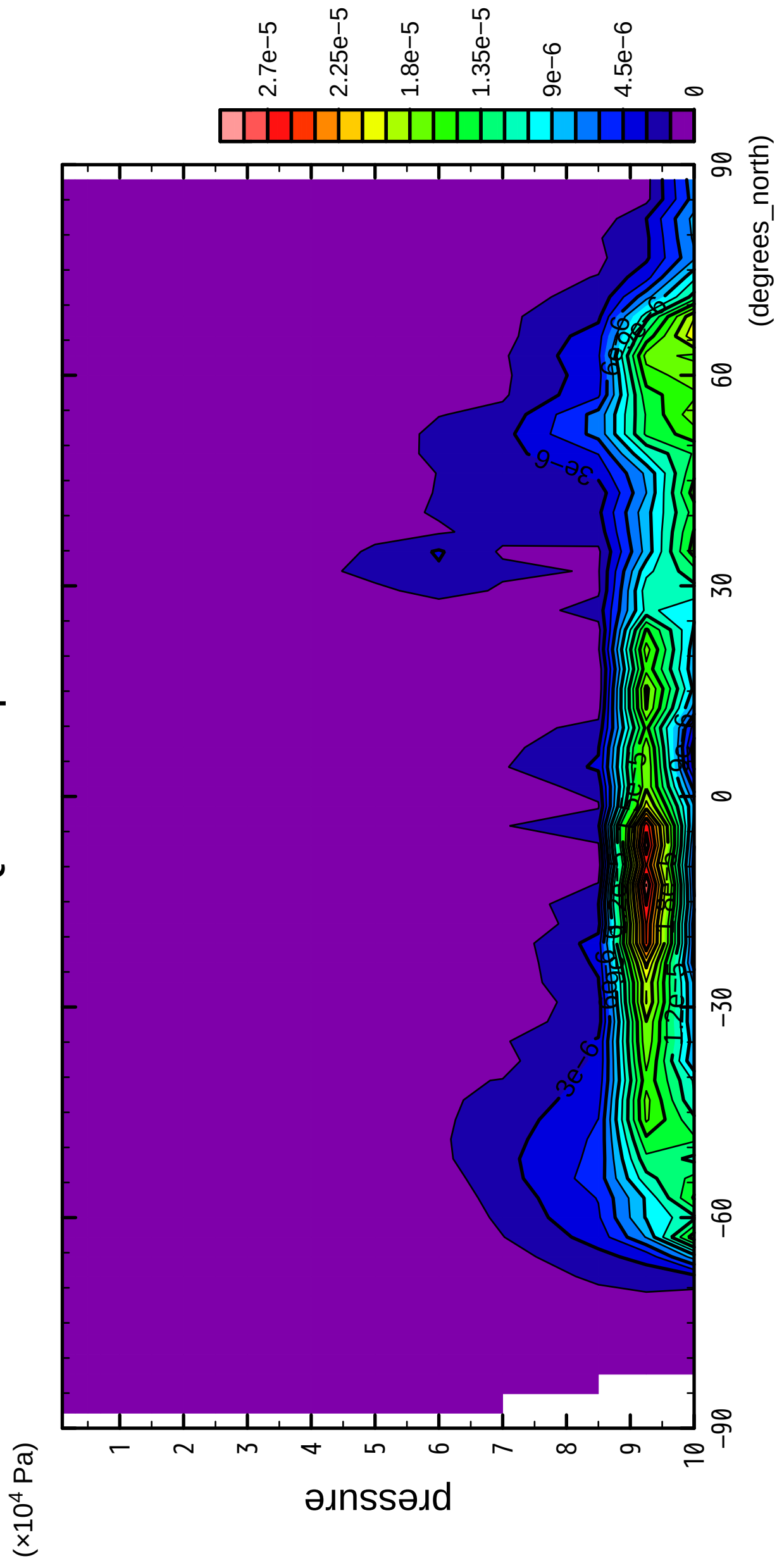


latitude

CONTOUR INTERVAL = 1.500E-06

6/12

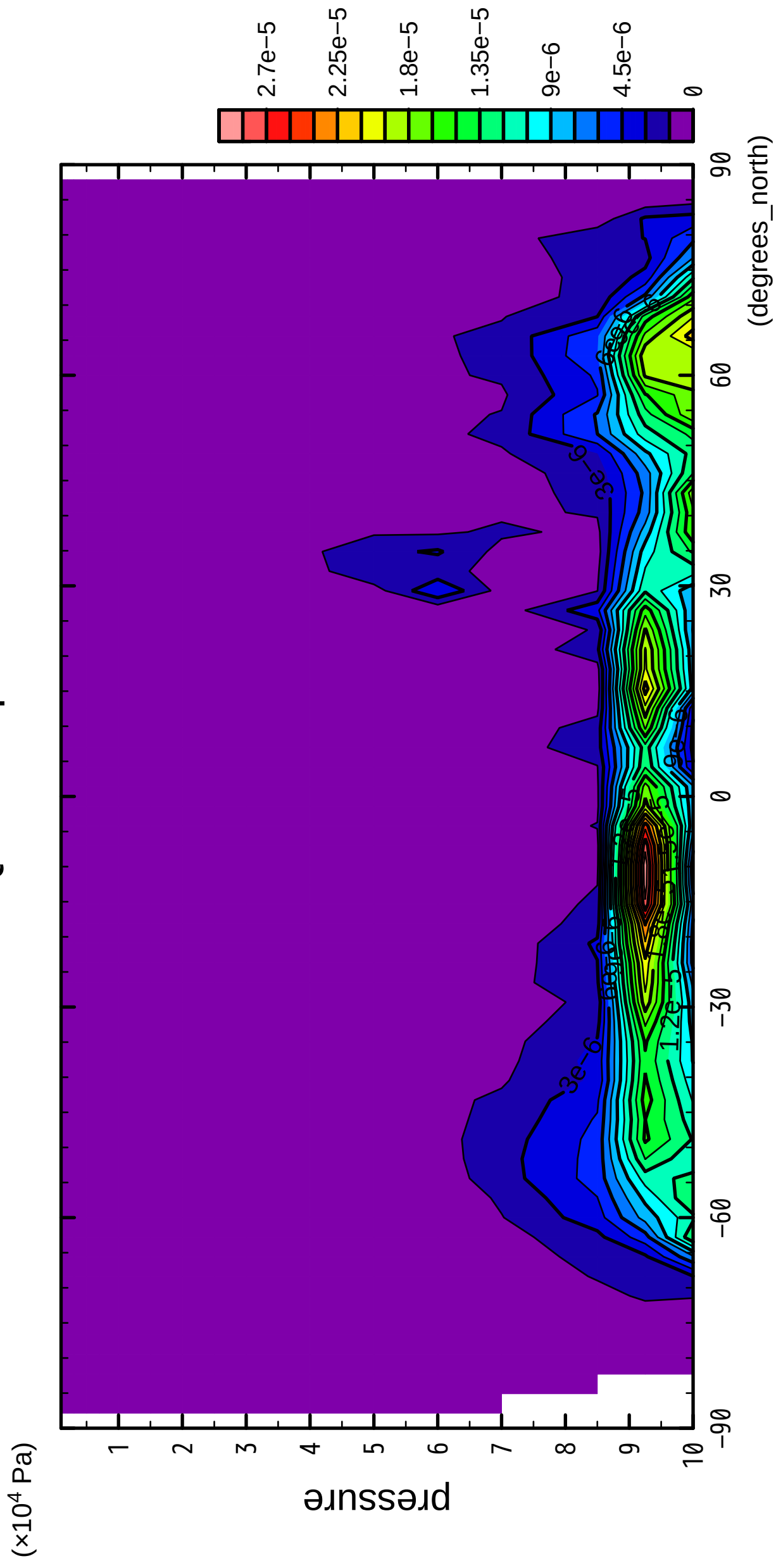
QH2OLiq



CONTOUR INTERVAL = 1.500E-06

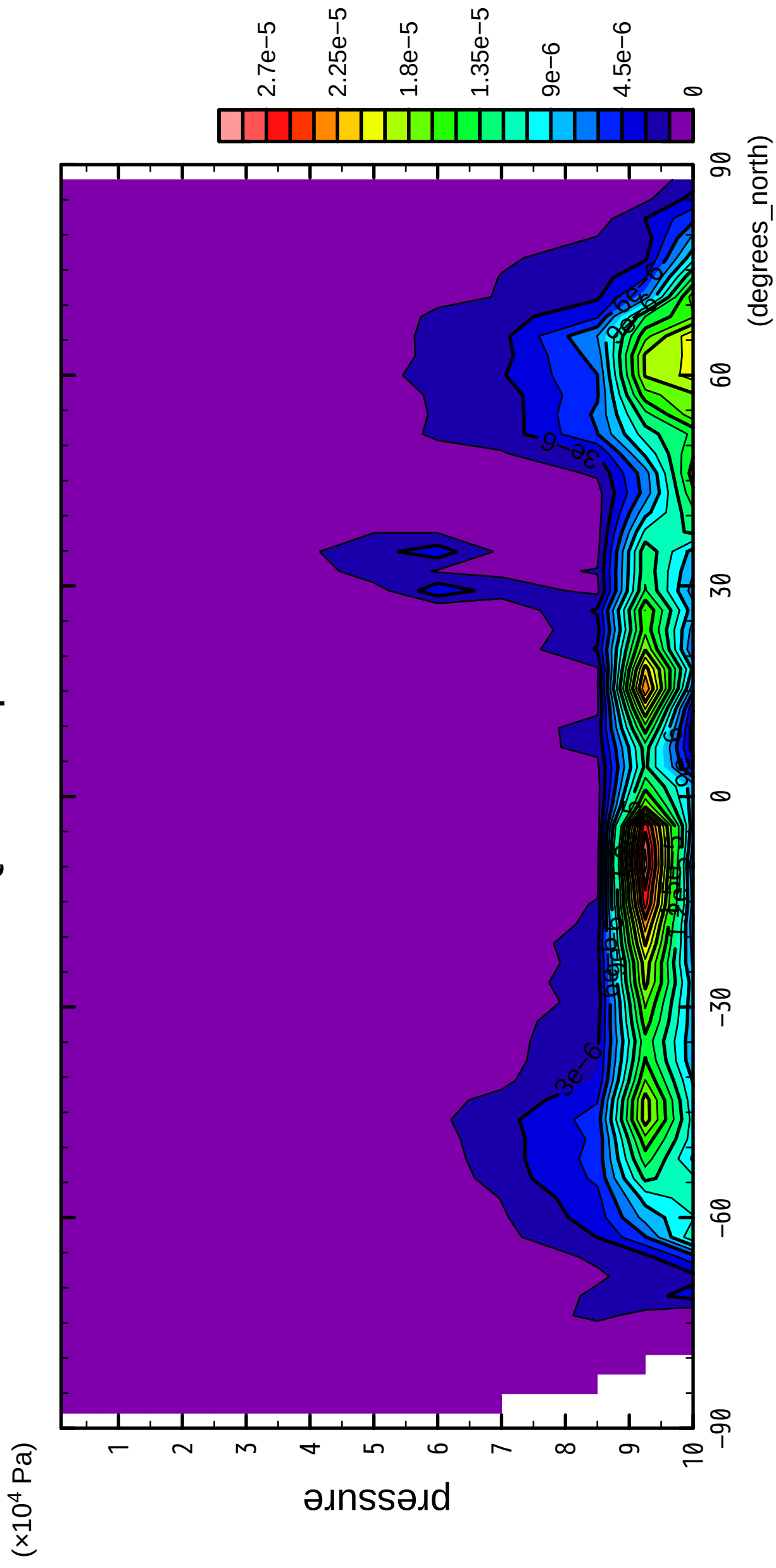
7/12

QH2OLiq



8/12

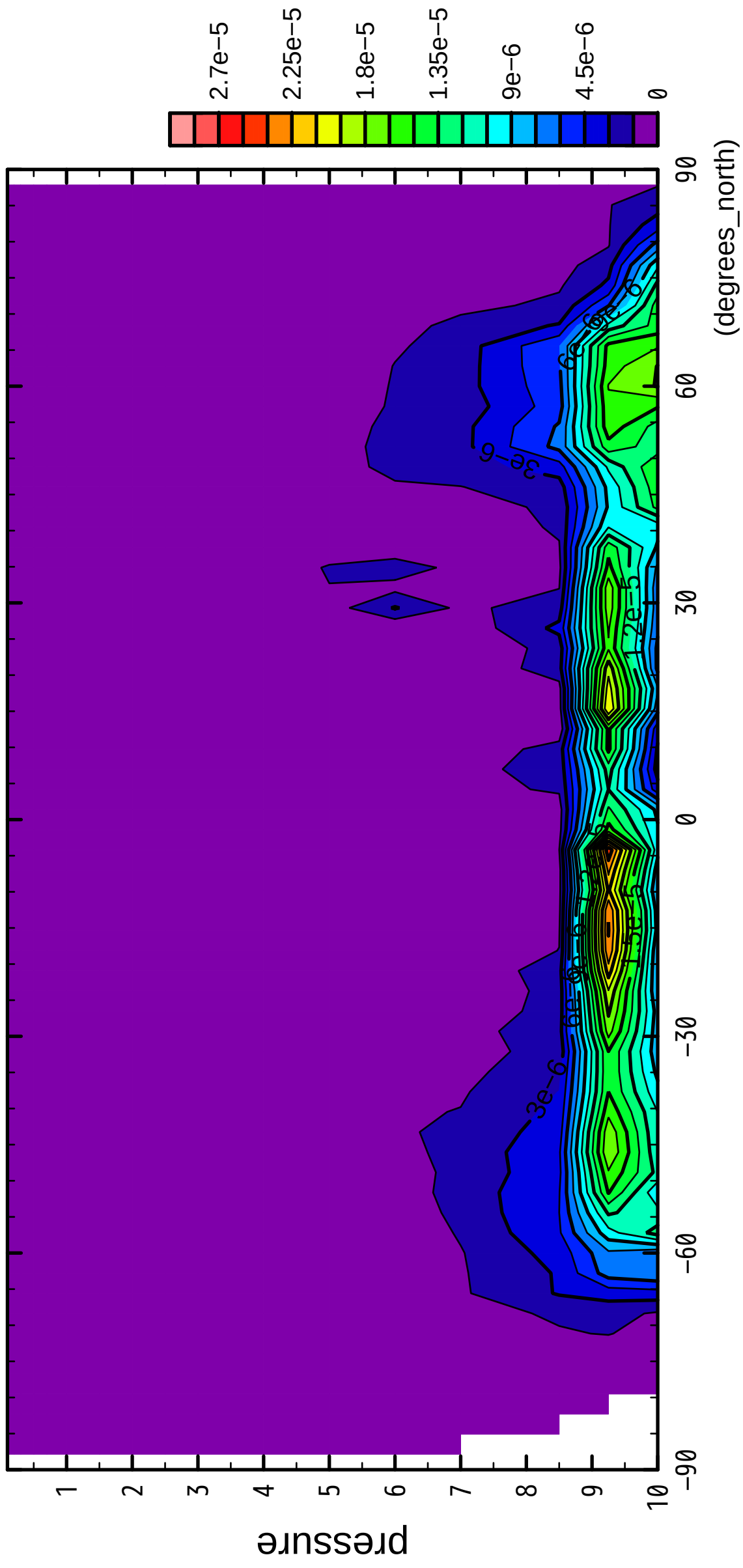
QH2OLiq



9/12

QH2OLiq

($\times 10^4$ Pa)

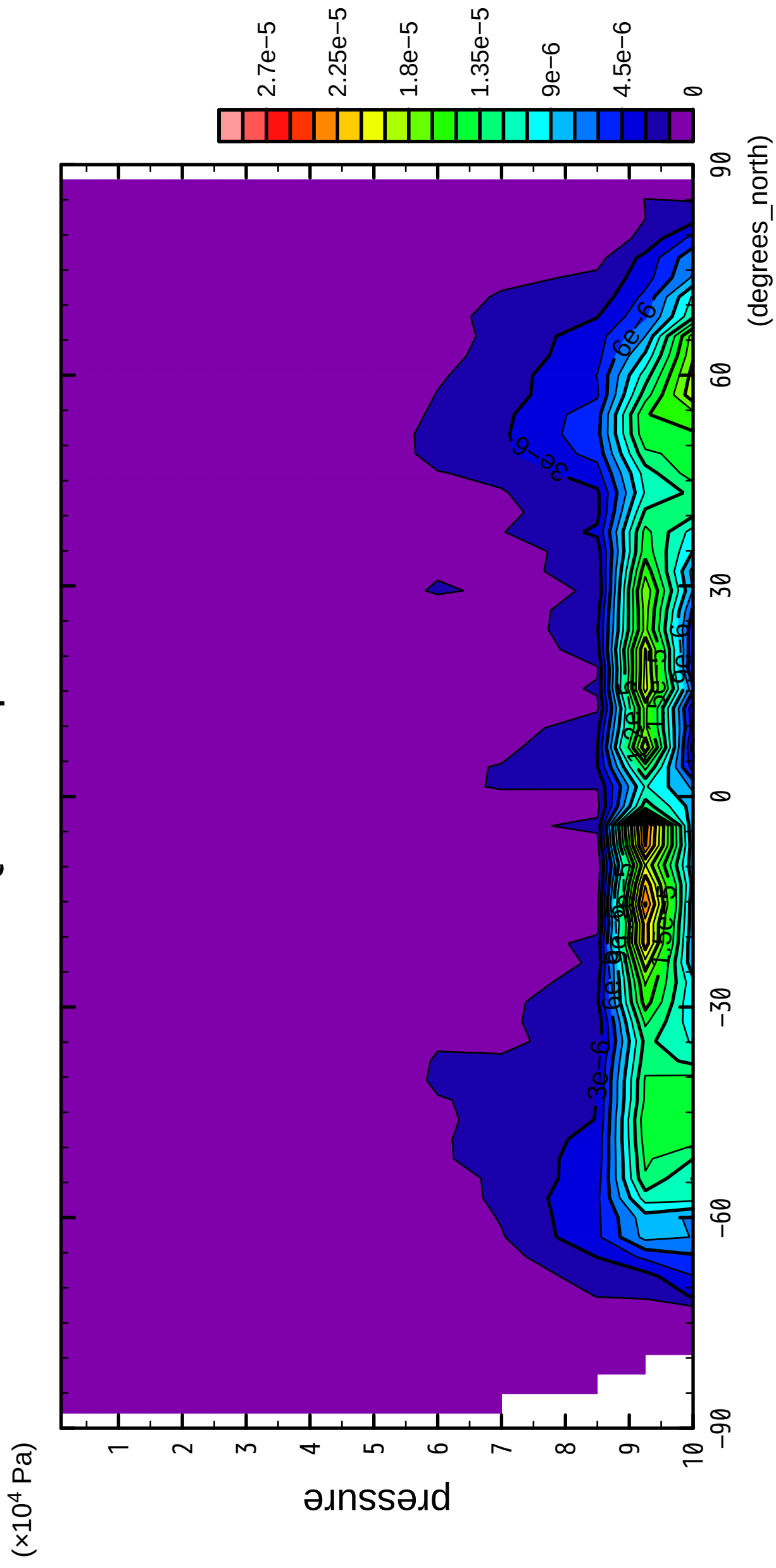


latitude

CONTOUR INTERVAL = 1.500×10^{-6}

10/12

QH2OLiq

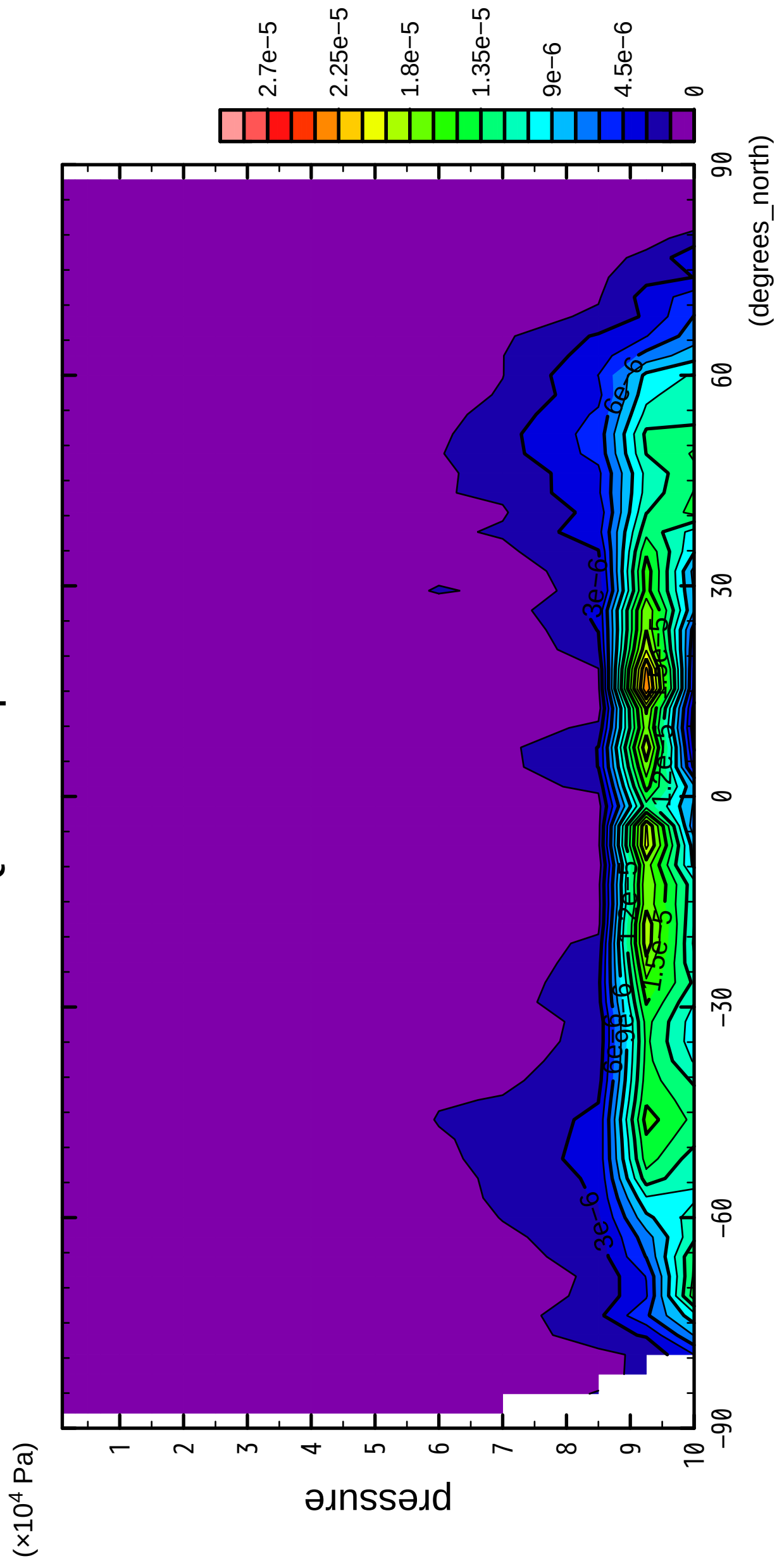


latitude

CONTOUR INTERVAL = 1.500×10^{-6}

11/12

QH2OLiq

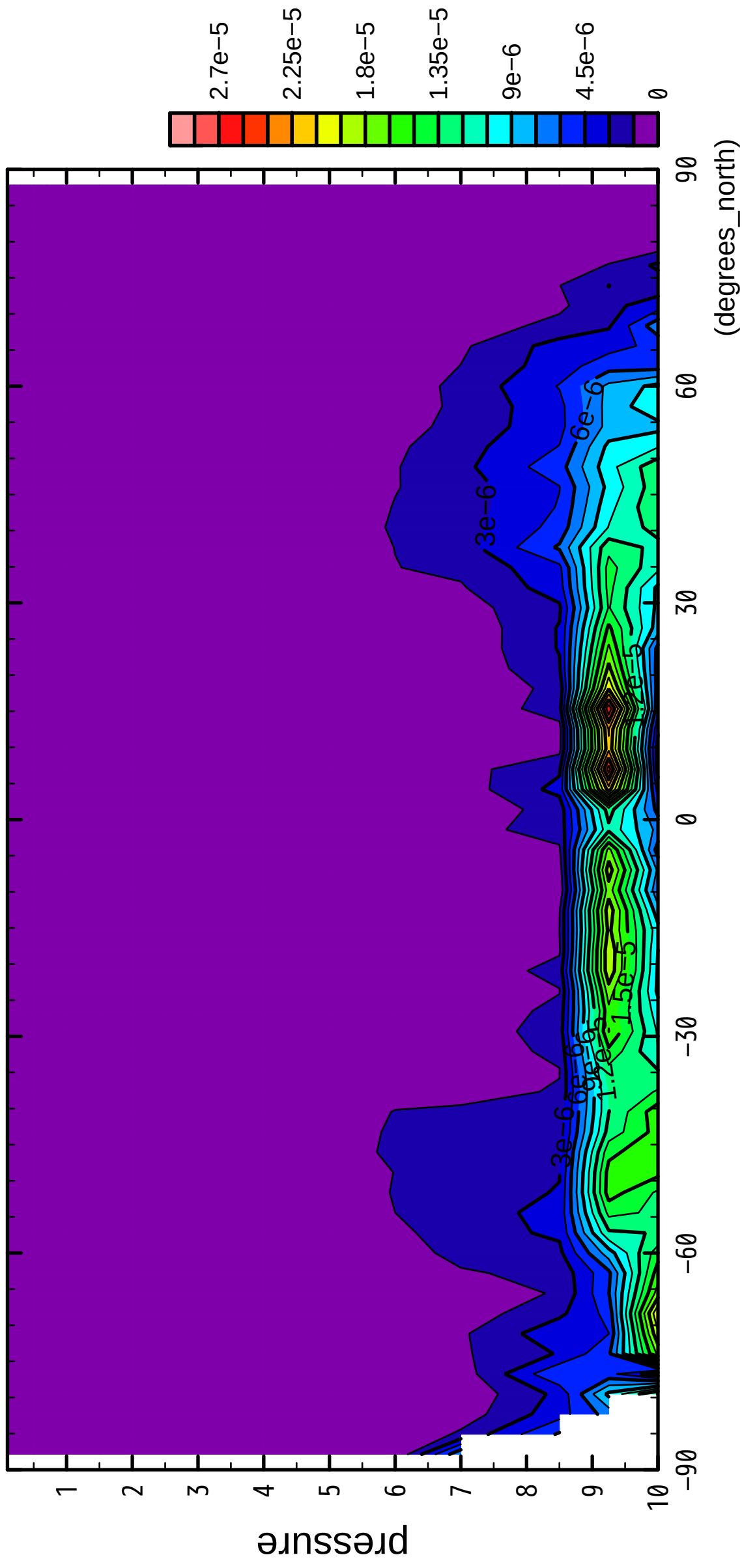


CONTOUR INTERVAL = 1.500E-06

12/12

QH2OLiq

($\times 10^4$ Pa)



latitude

CONTOUR INTERVAL = 1.500×10^{-6}