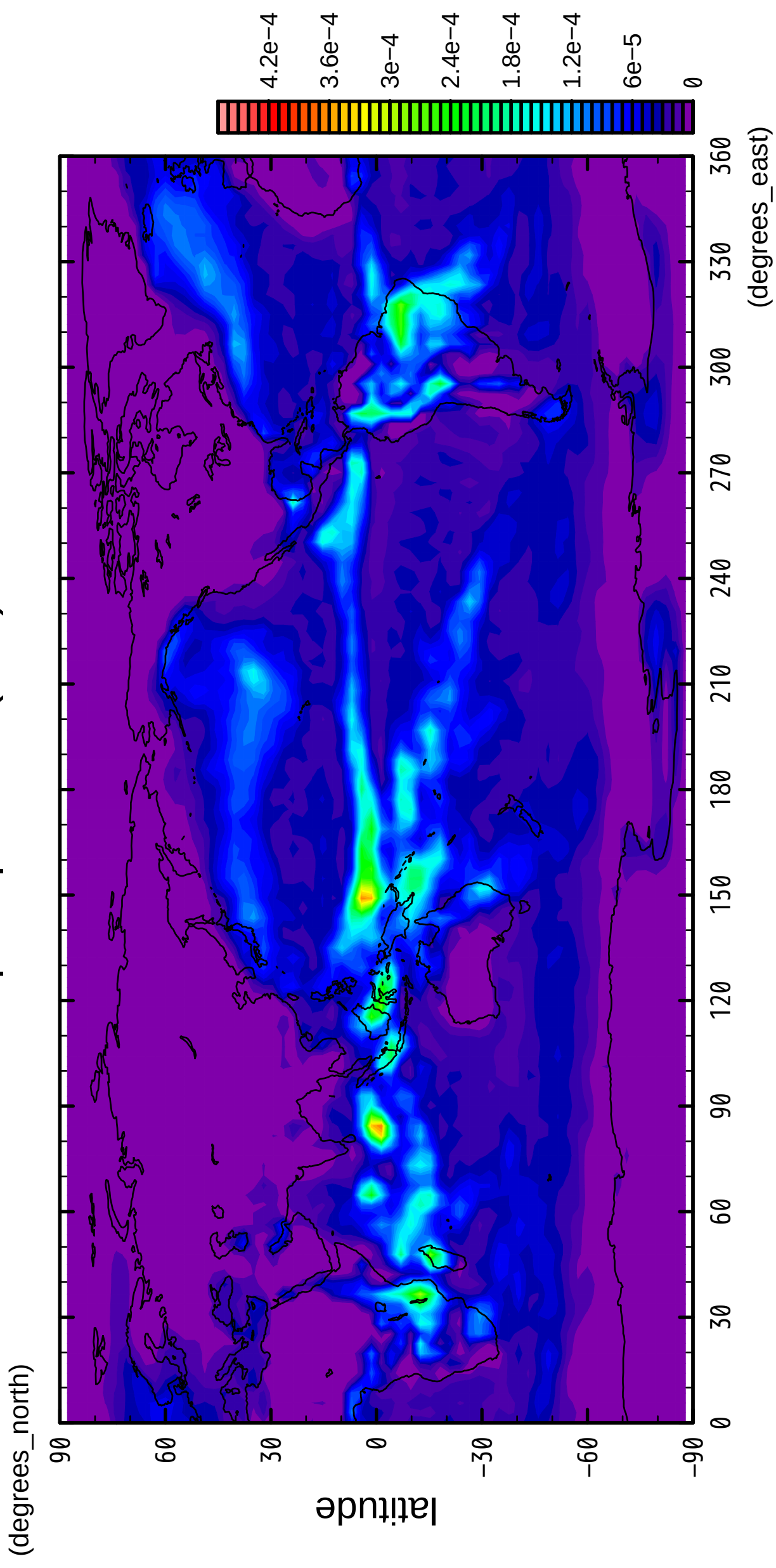


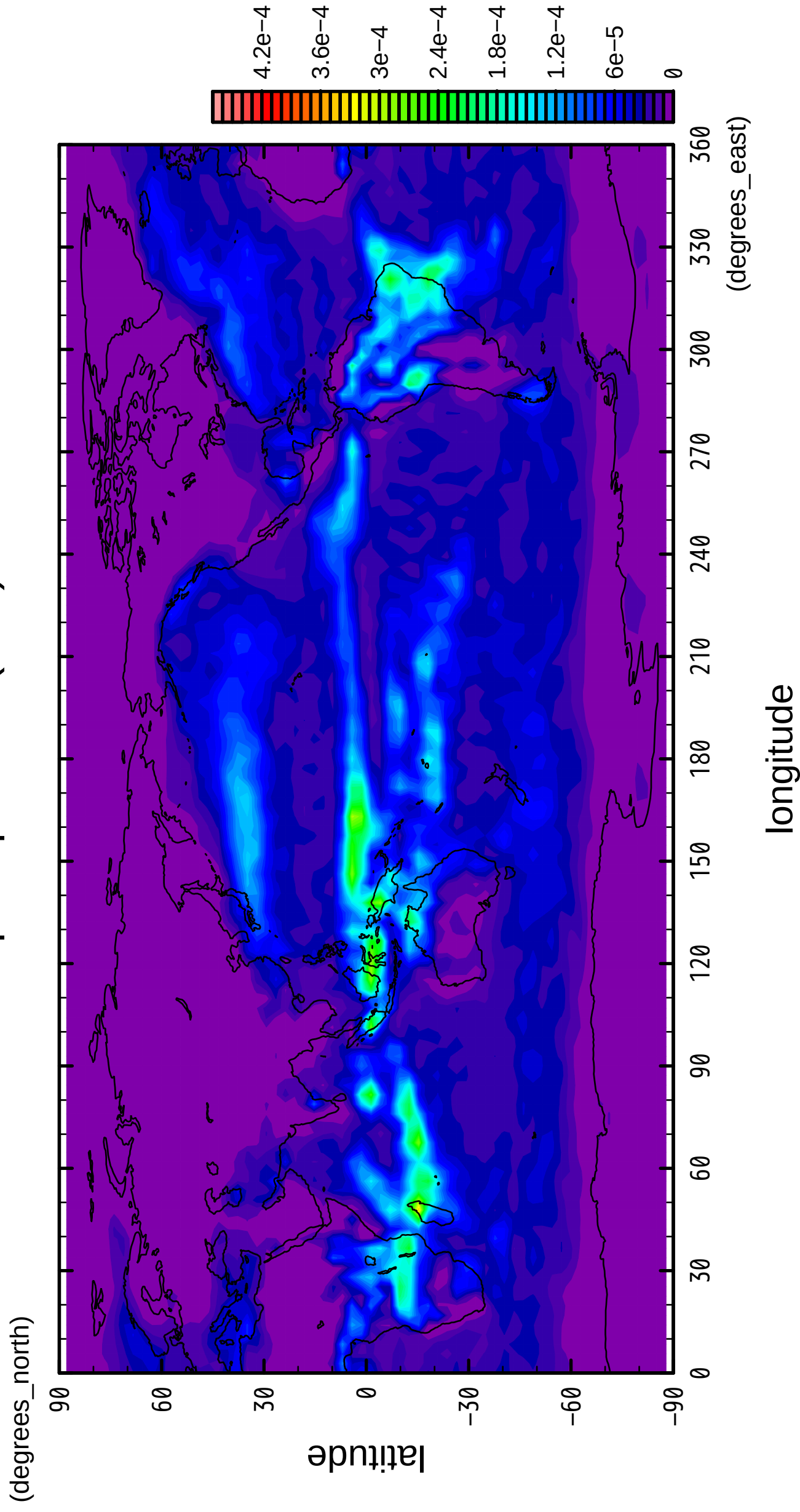
1/12

# precipitation (rain)



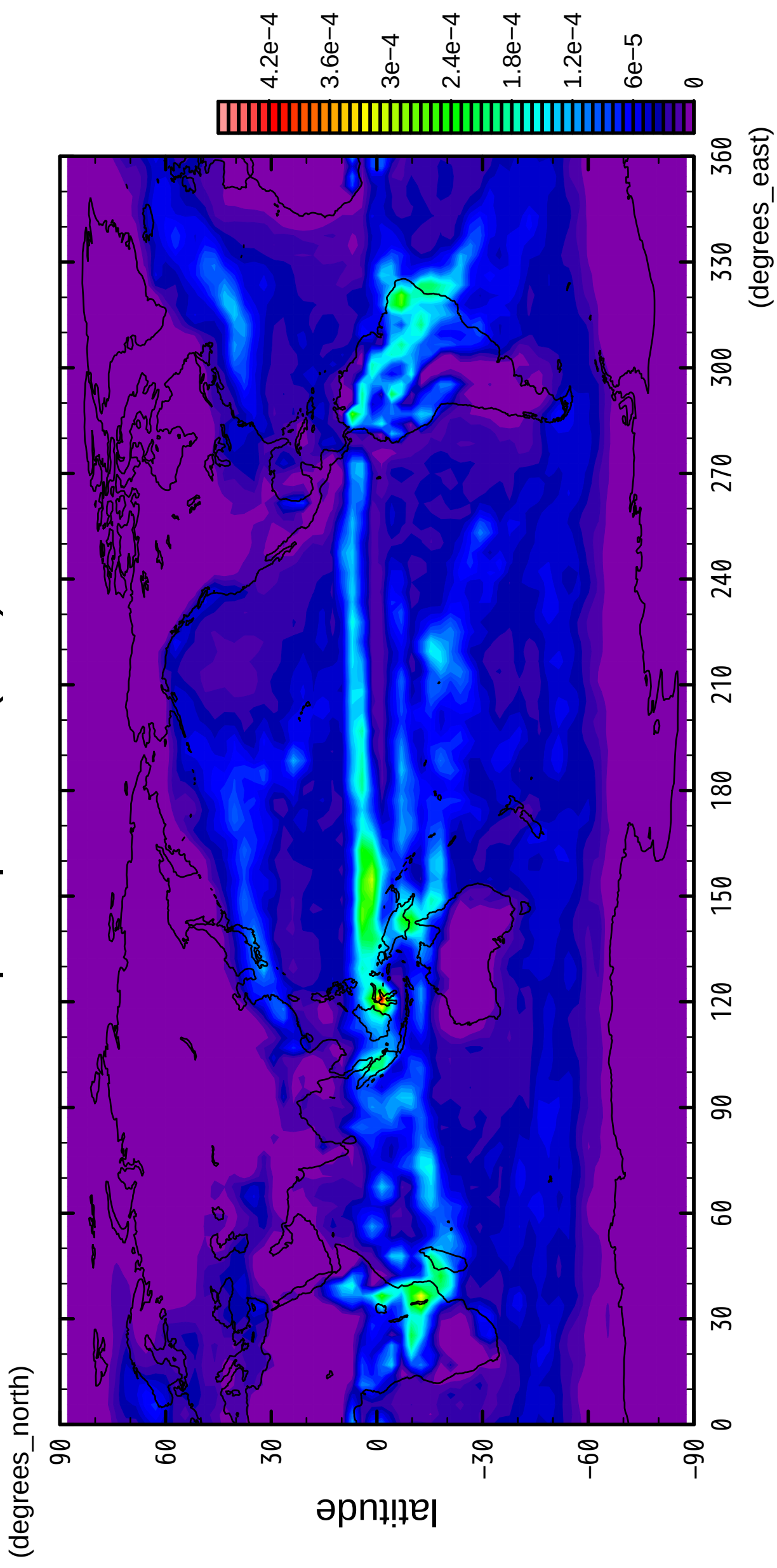
2/12

# precipitation (rain)



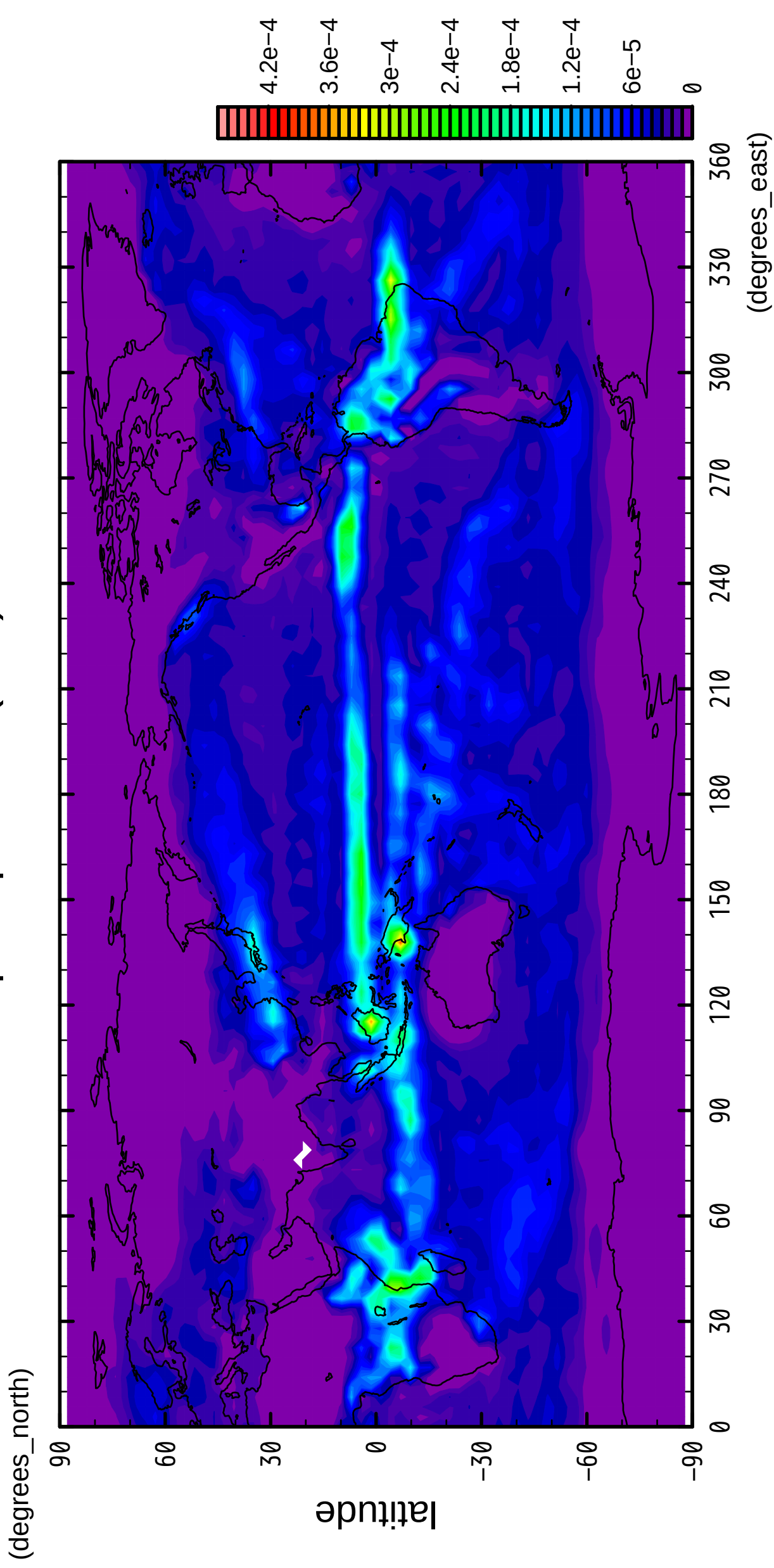
3/12

# precipitation (rain)



4/12

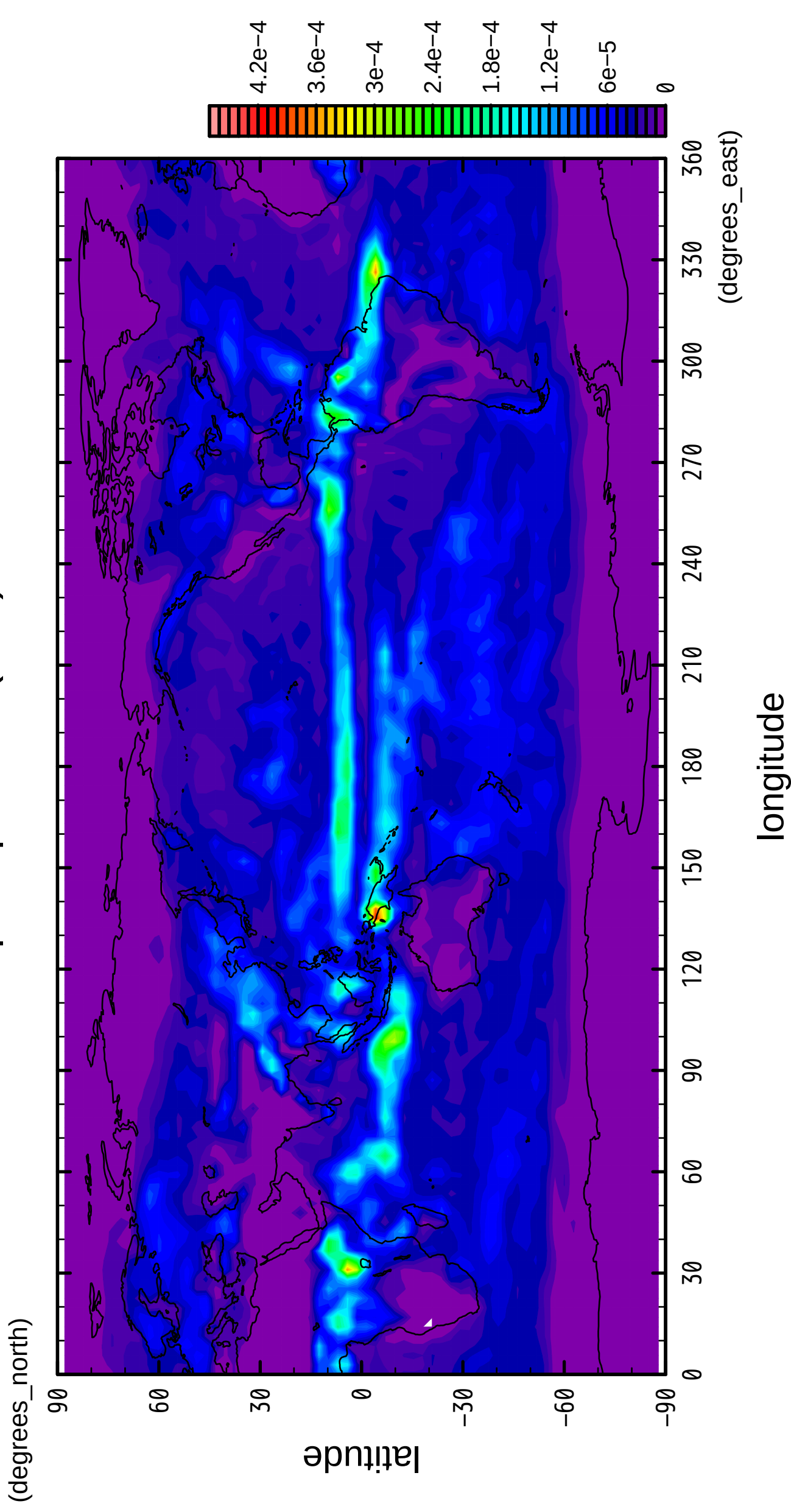
# precipitation (rain)





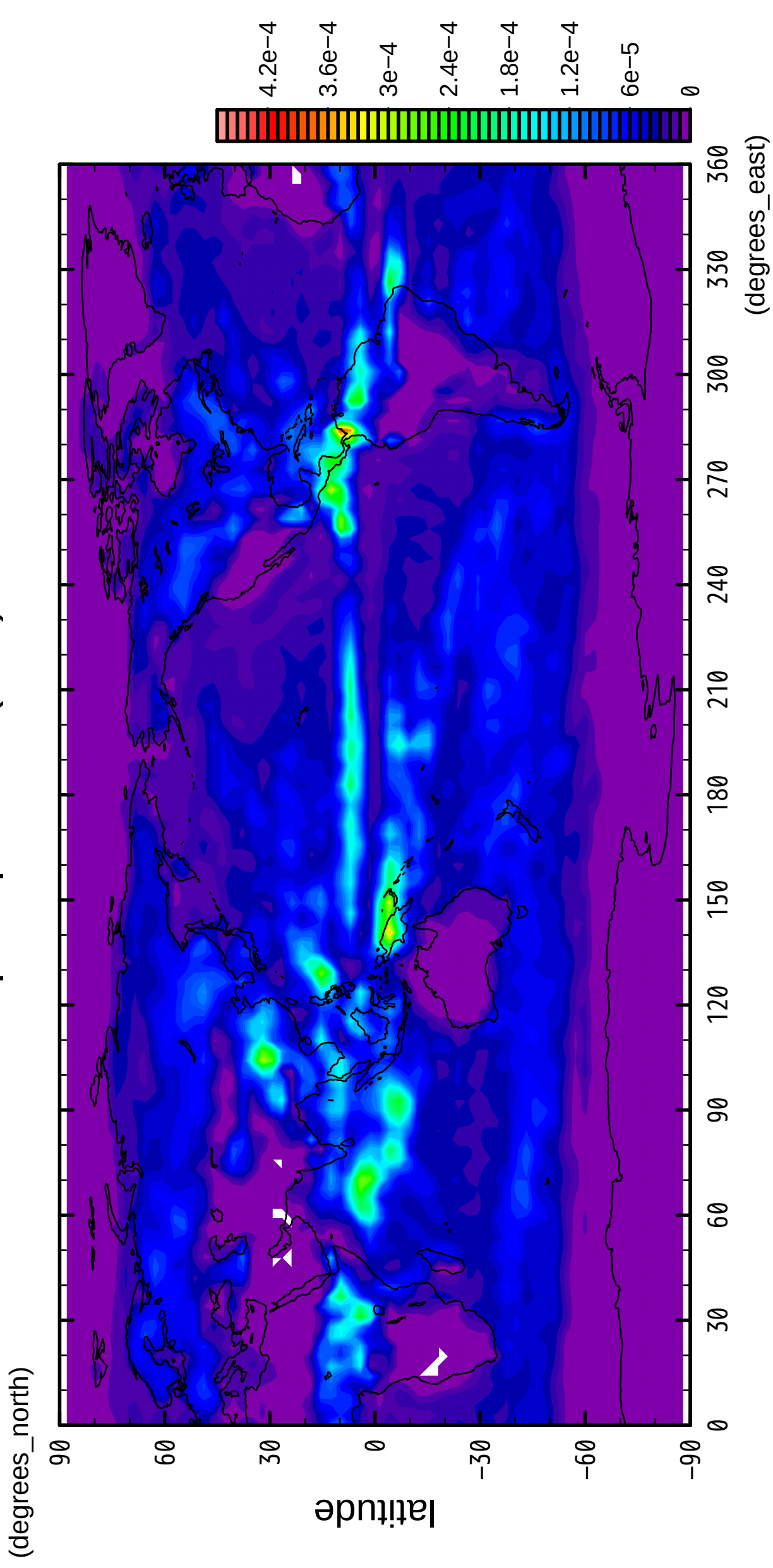
5/12

# precipitation (rain)



6/12

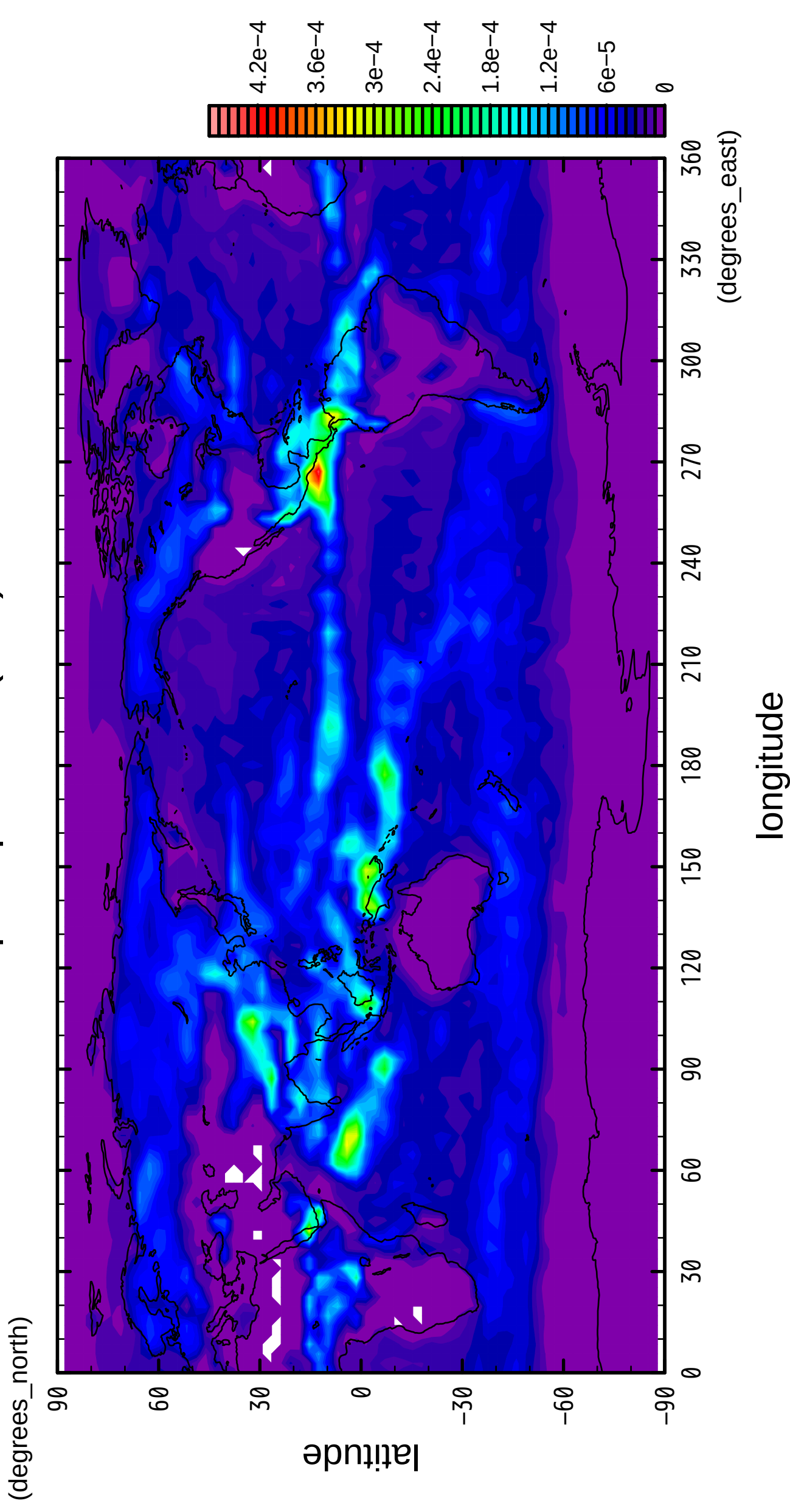
precipitation (rain)



longitude

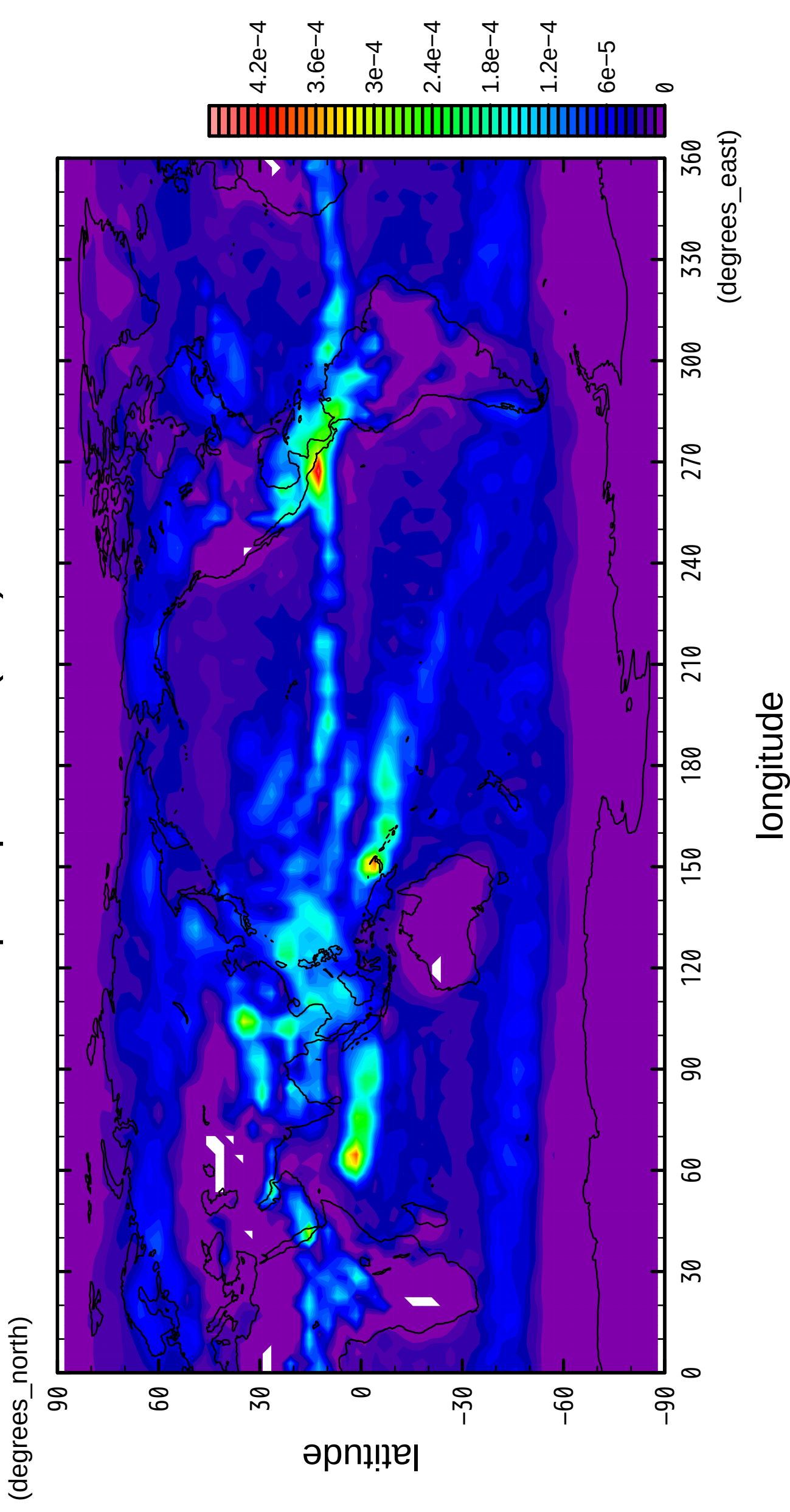
7/12

# precipitation (rain)



8/12

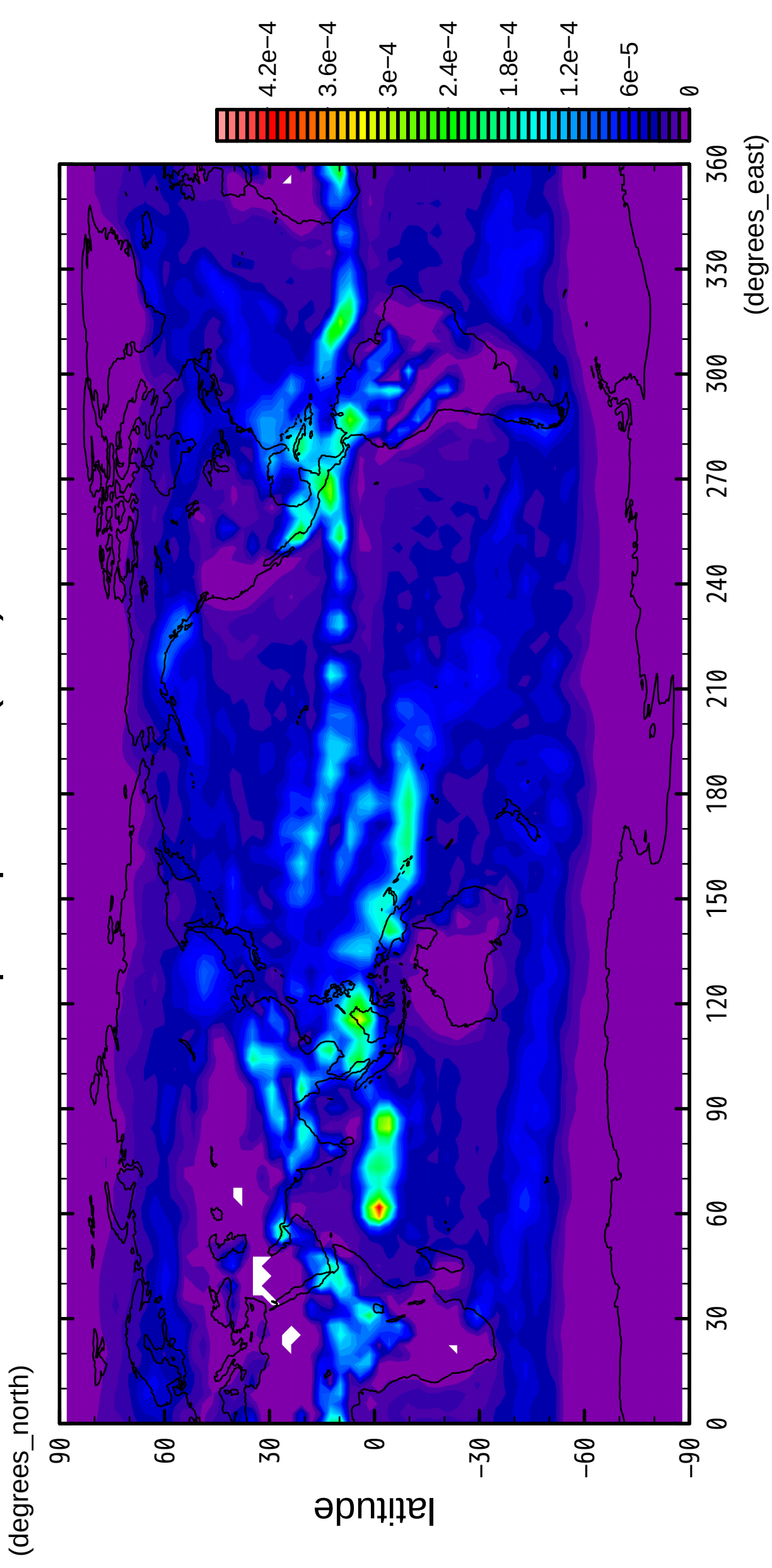
# precipitation (rain)





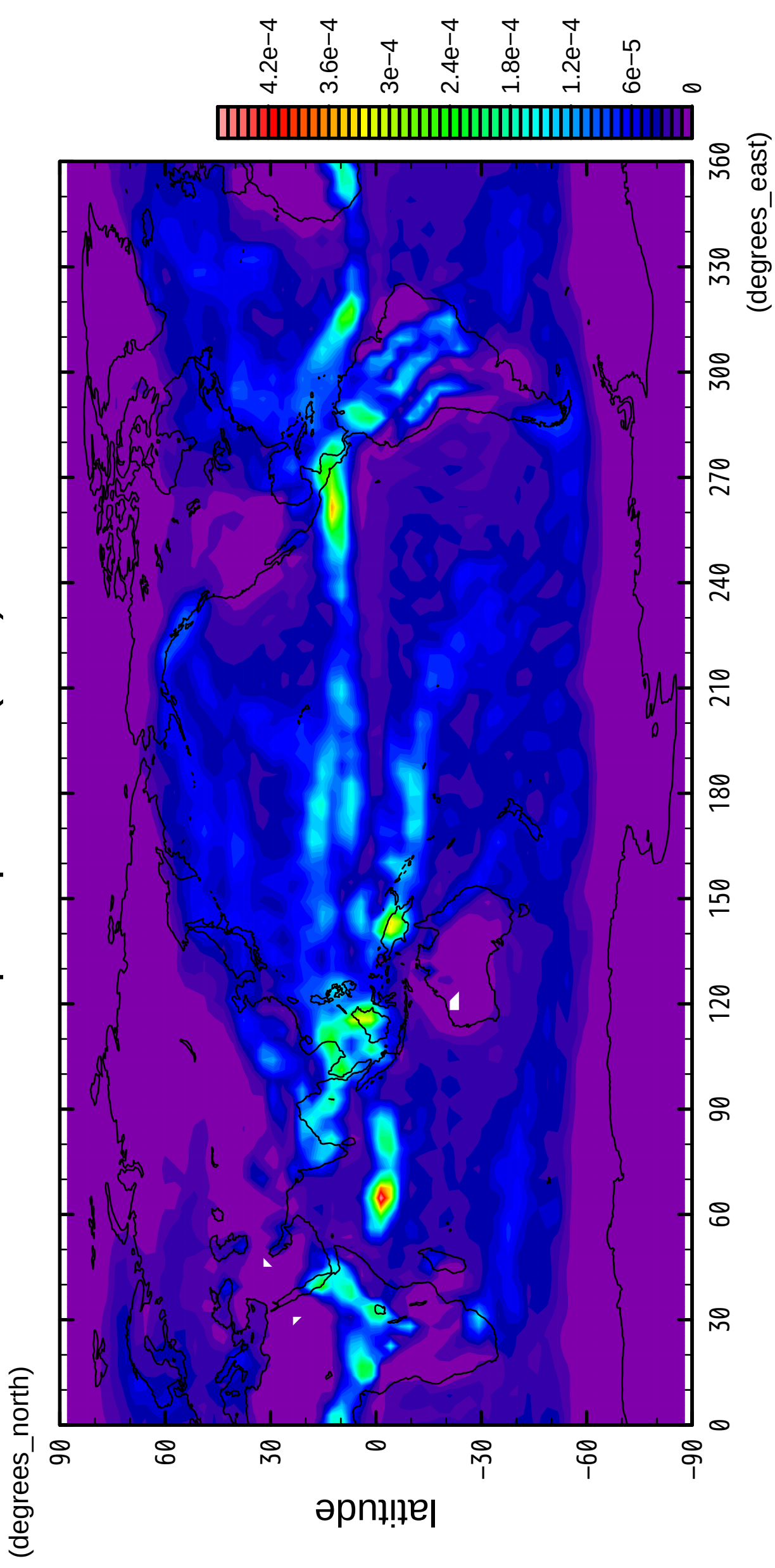
9/12

precipitation (rain)



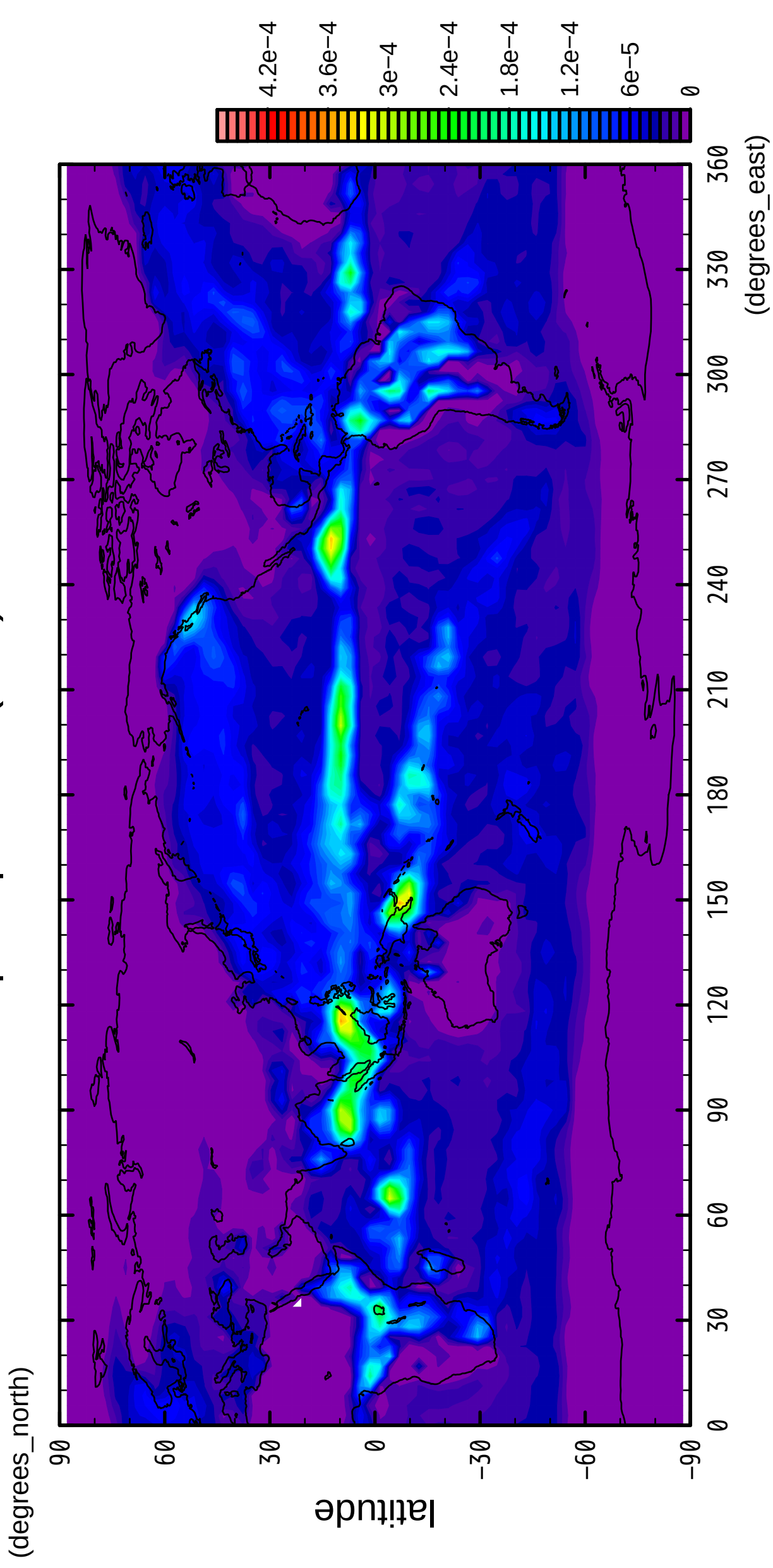
10/12

precipitation (rain)



11/12

precipitation (rain)



12/12

precipitation (rain)

