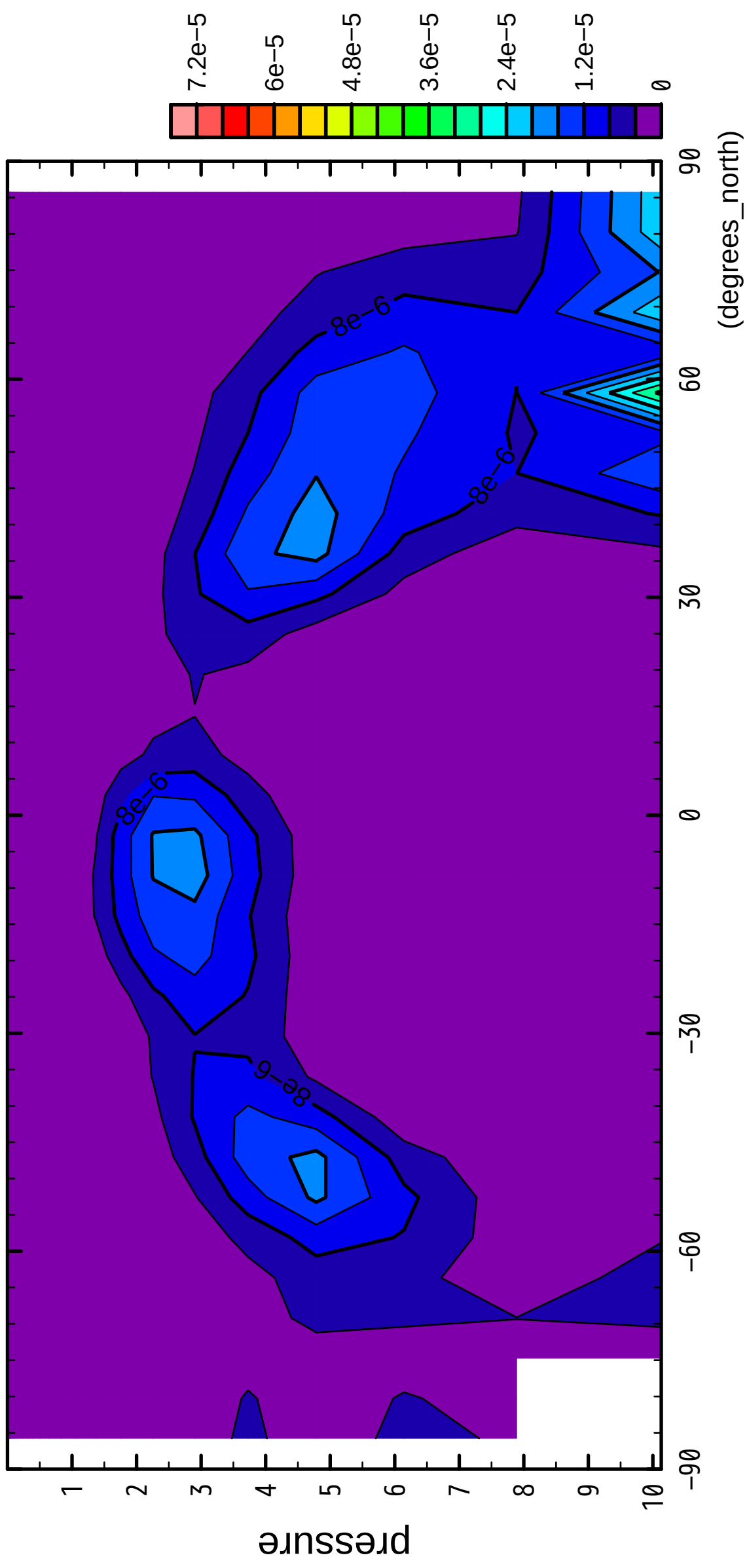


1/12

QH2OSol

( $\times 10^4$  Pa)



latitude

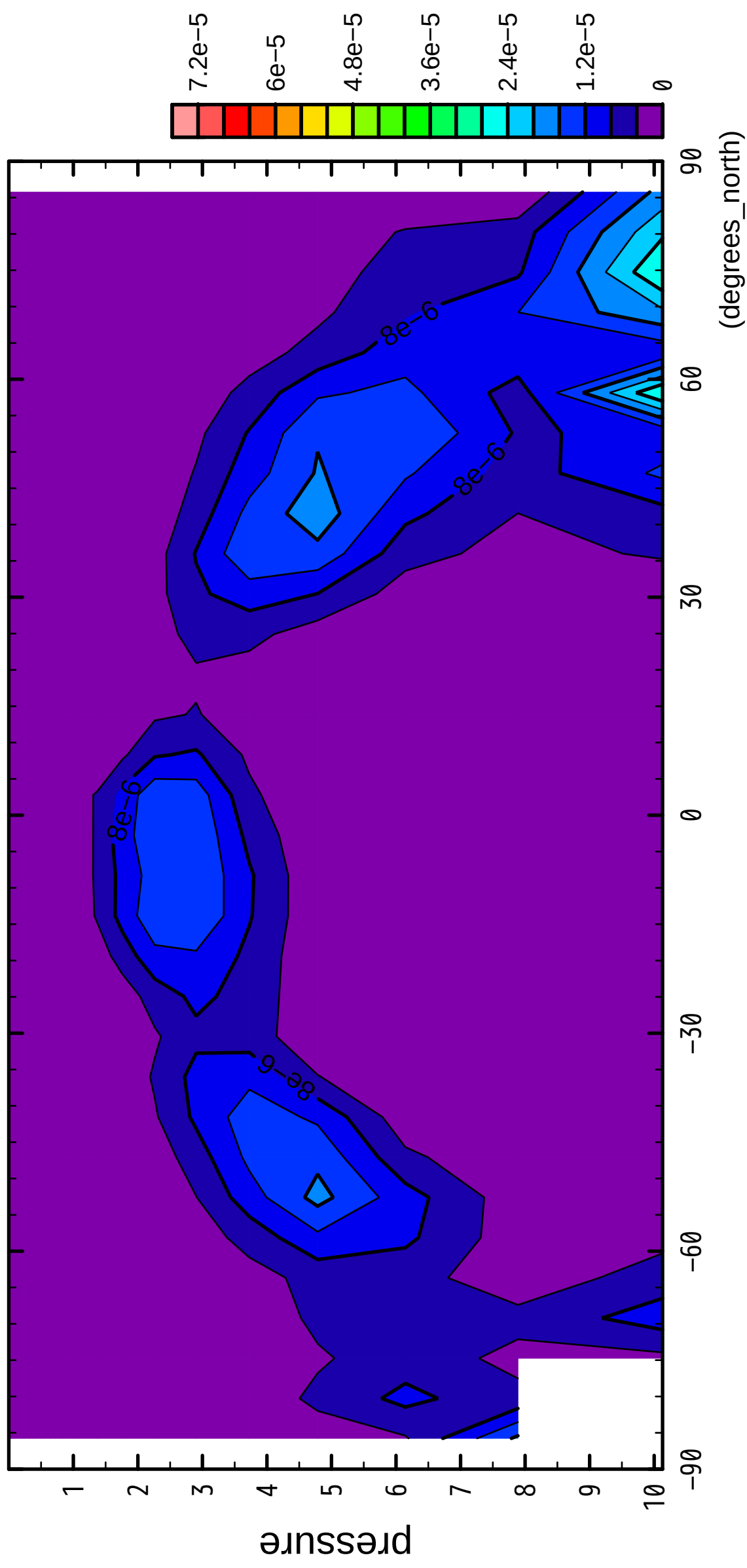
(degrees\_north)

CONTOUR INTERVAL =  $4.000 \times 10^{-6}$

2/12

QH2OSol

( $\times 10^4$  Pa)



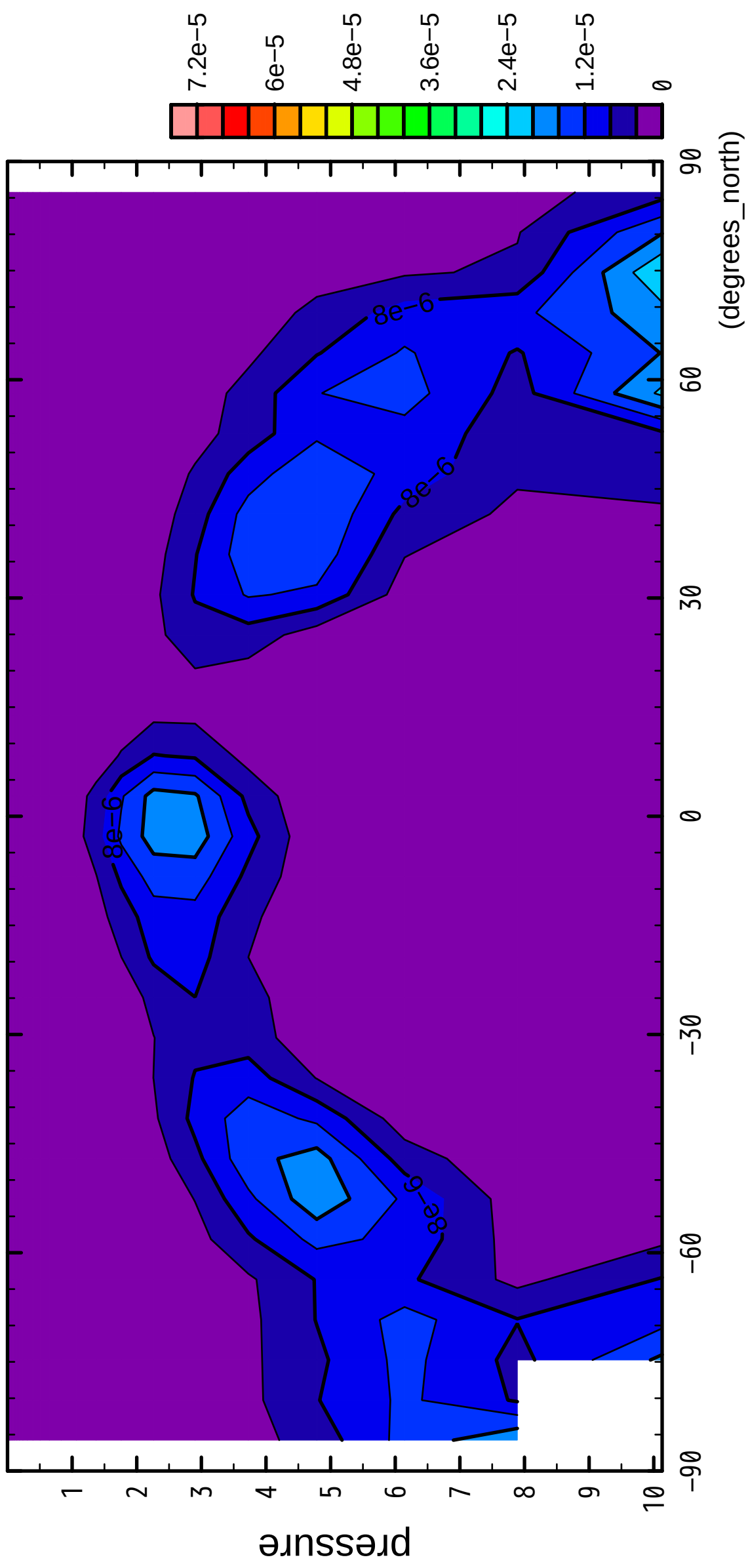
latitude

CONTOUR INTERVAL =  $4.000E-06$

3/12

QH2OSol

( $\times 10^4$  Pa)



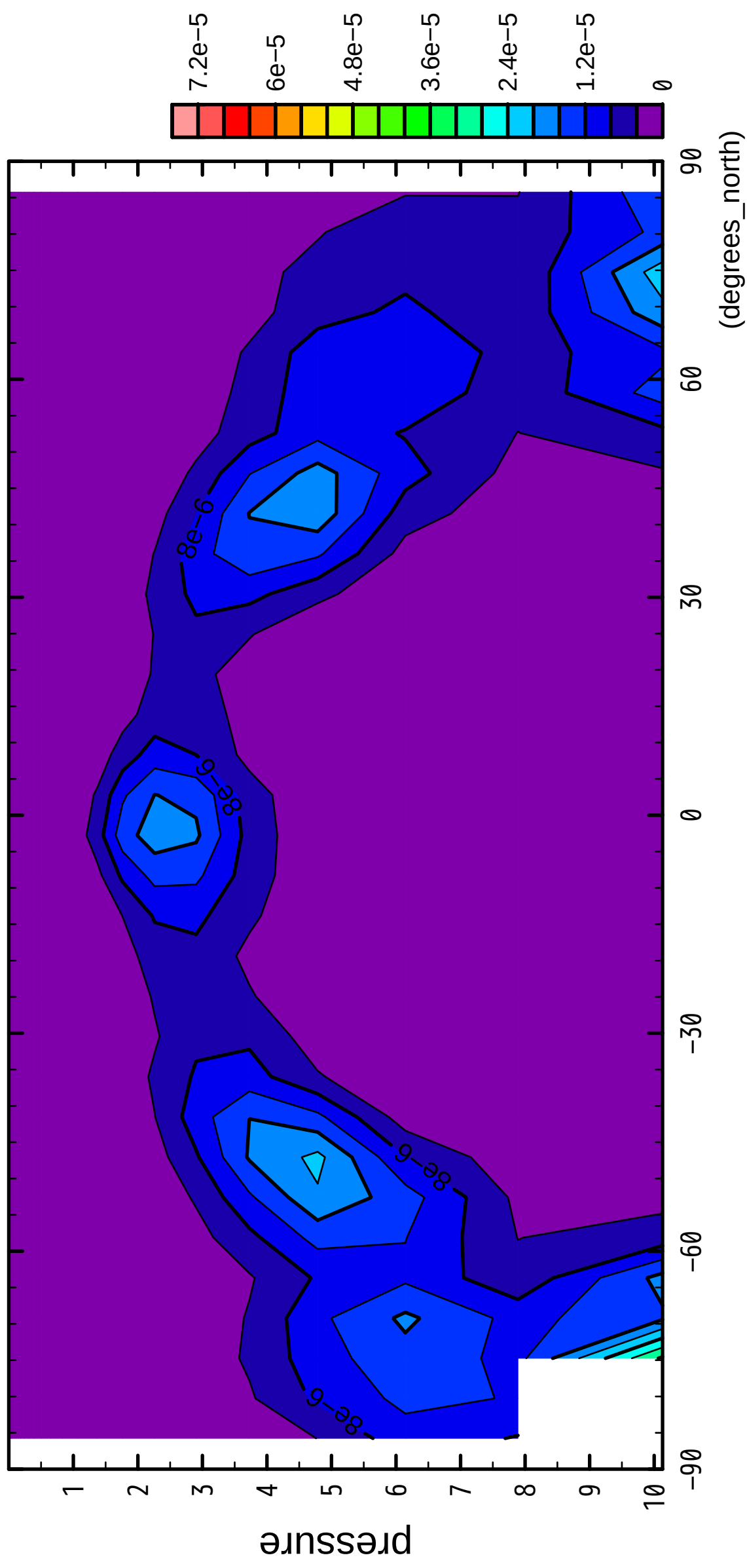
latitude

CONTOUR INTERVAL =  $4.000 \times 10^{-6}$

4/12

QH2OSol

( $\times 10^4$  Pa)



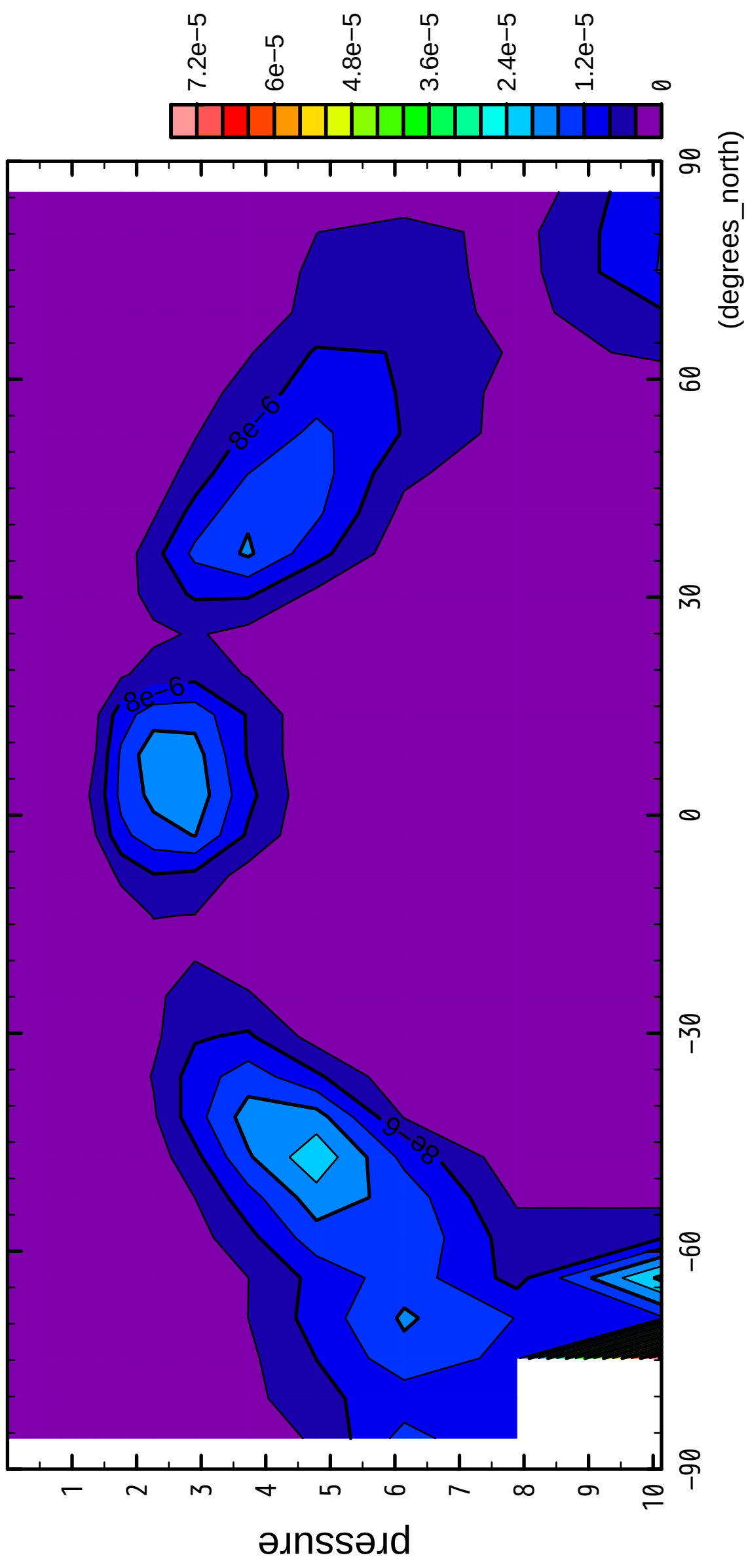
latitude

CONTOUR INTERVAL =  $4.000E-06$

5/12

QH2OSol

( $\times 10^4$  Pa)



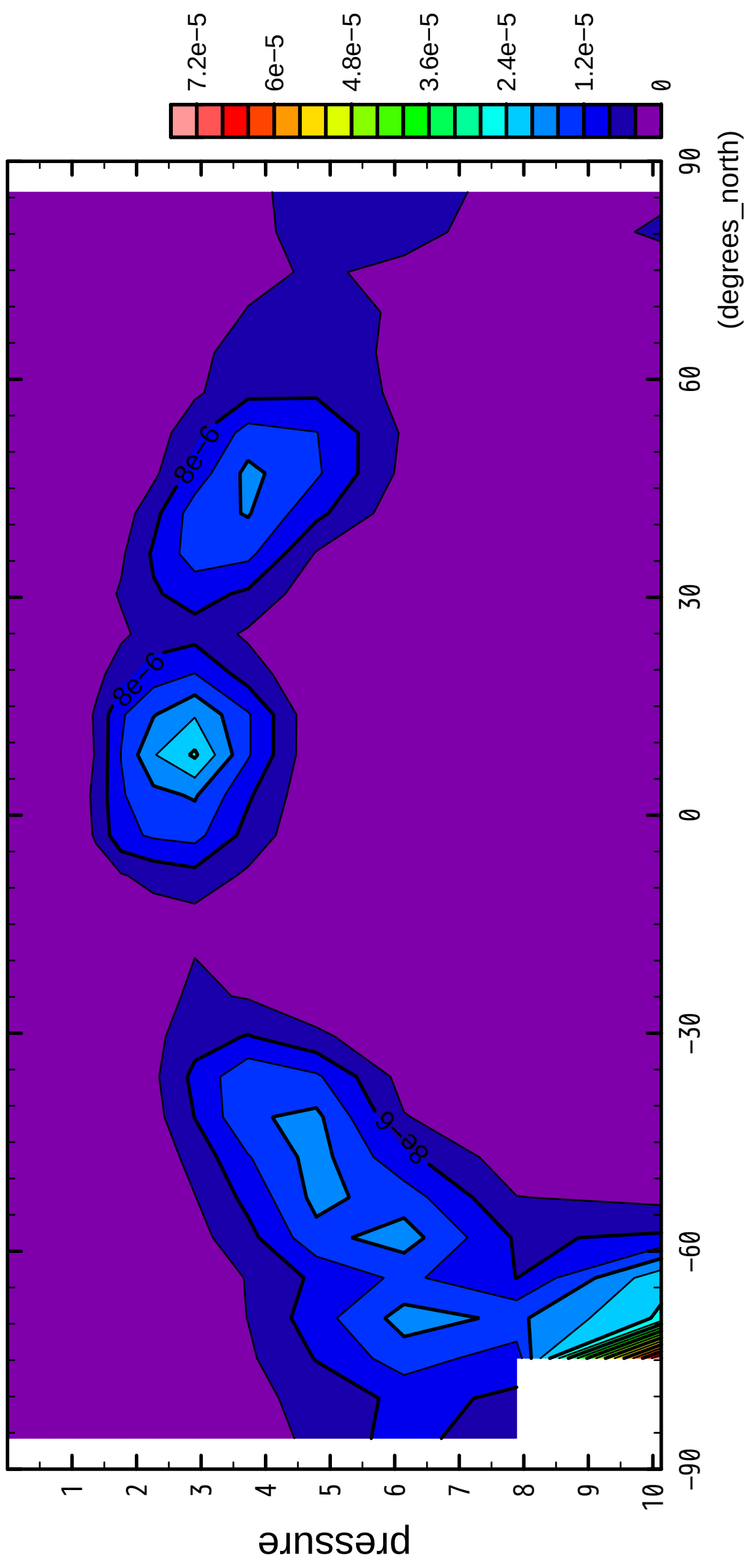
latitude

CONTOUR INTERVAL =  $4.000 \times 10^{-6}$

6/12

QH2OSol

( $\times 10^4$  Pa)



latitude

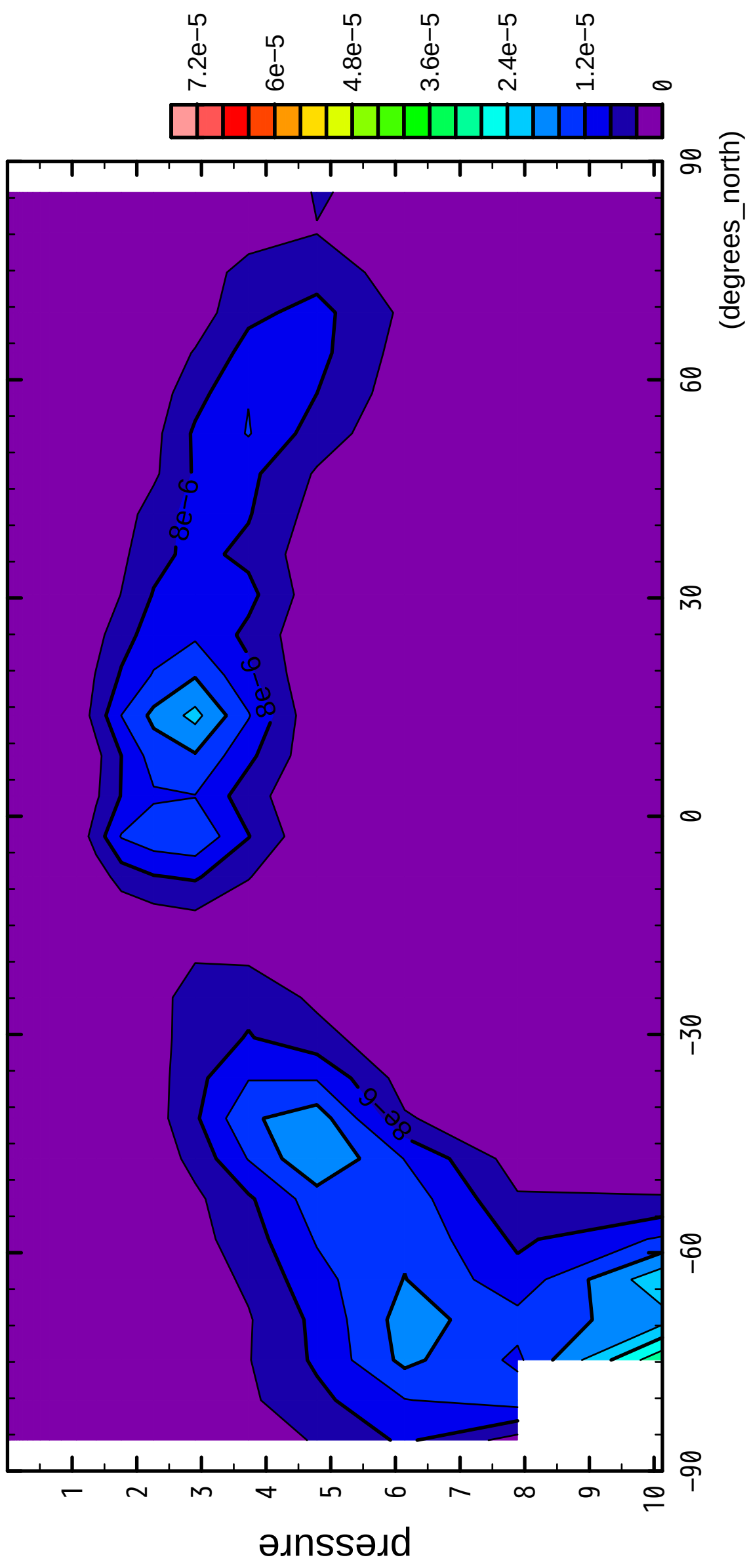
(degrees\_north)

CONTOUR INTERVAL =  $4.000 \times 10^{-6}$

7/12

QH2OSol

( $\times 10^4$  Pa)



latitude

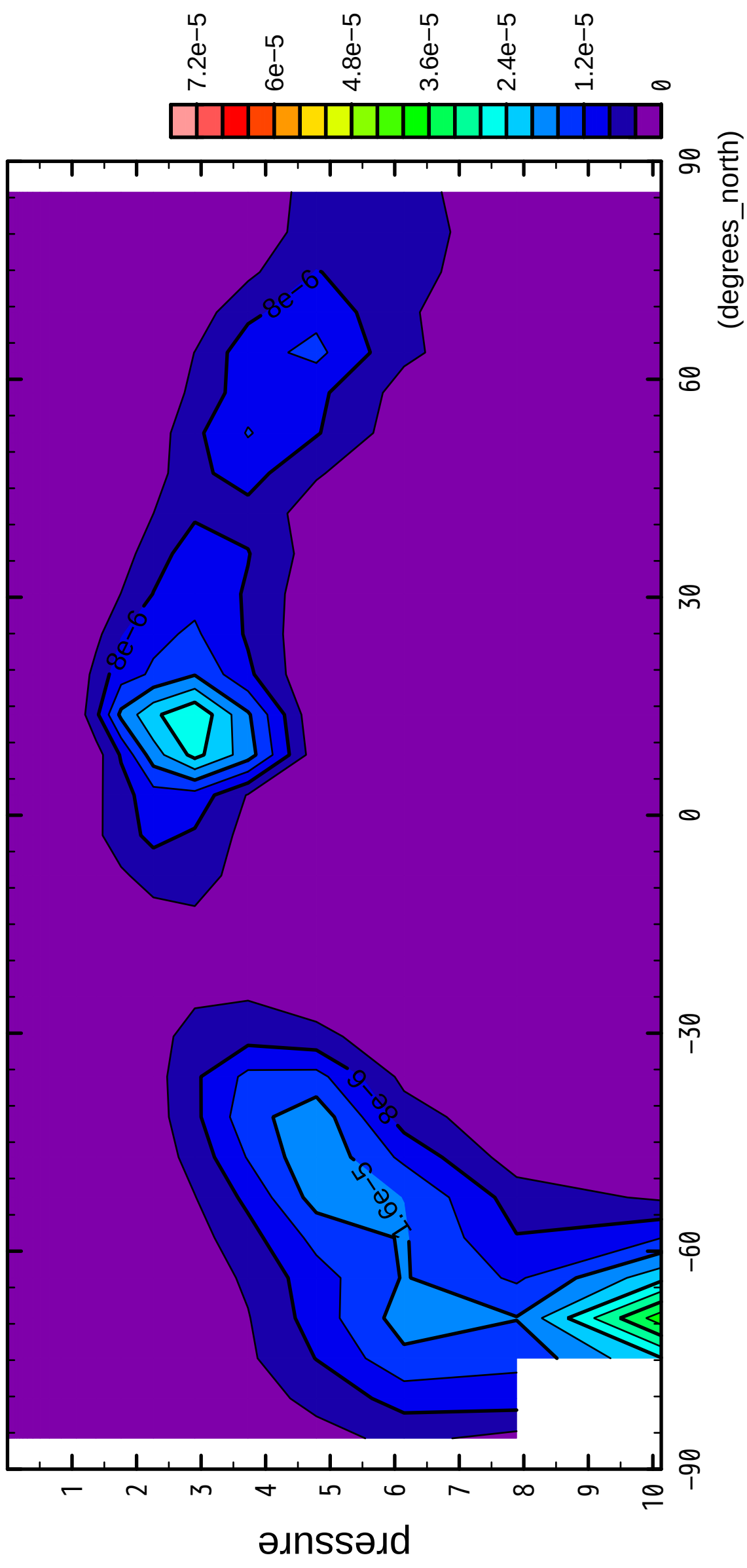
(degrees\_north)

CONTOUR INTERVAL =  $4.000 \times 10^{-6}$

8/12

QH2OSol

( $\times 10^4$  Pa)



latitude

(degrees\_north)

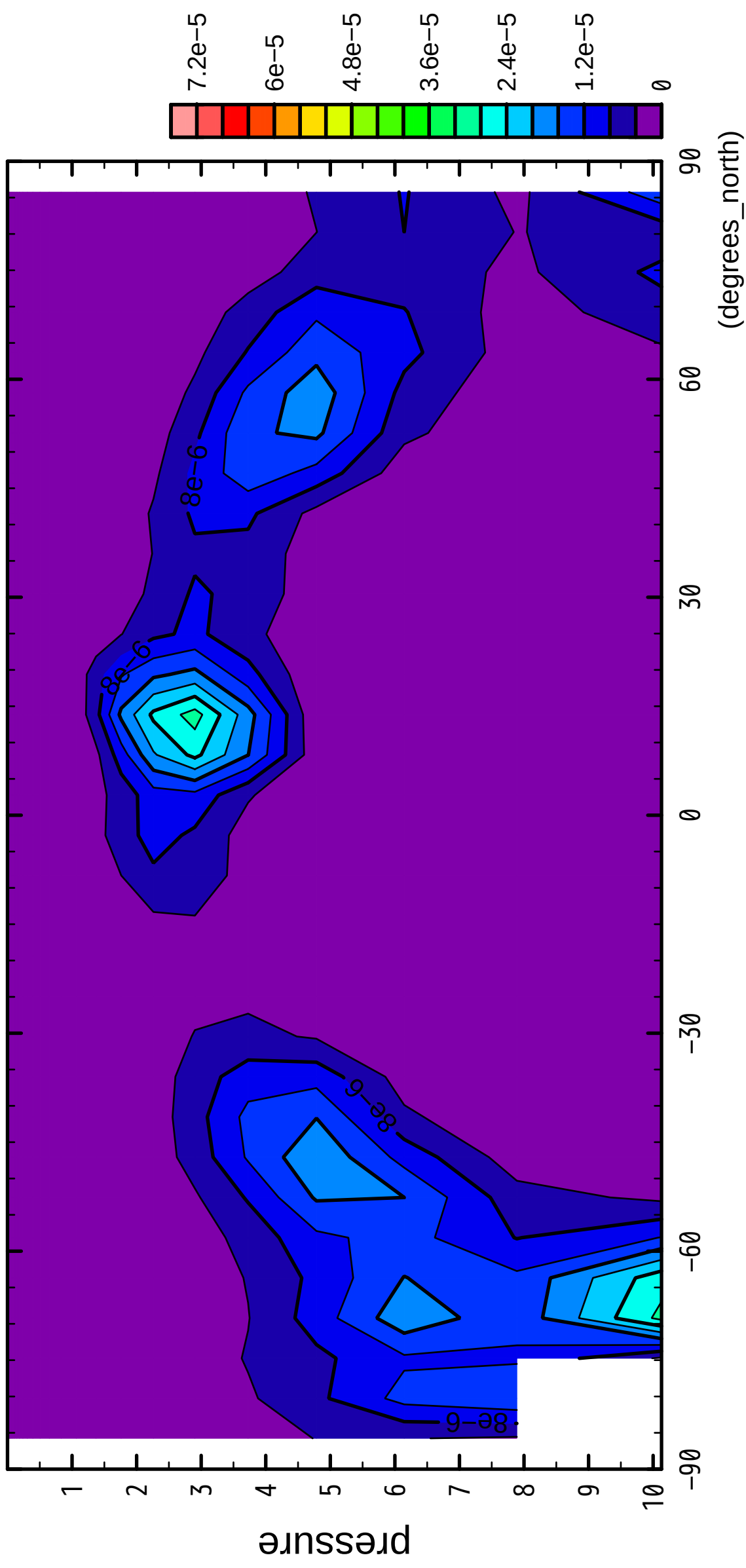
CONTOUR INTERVAL =  $4.000E-06$



9/12

QH2OSol

( $\times 10^4$  Pa)



latitude

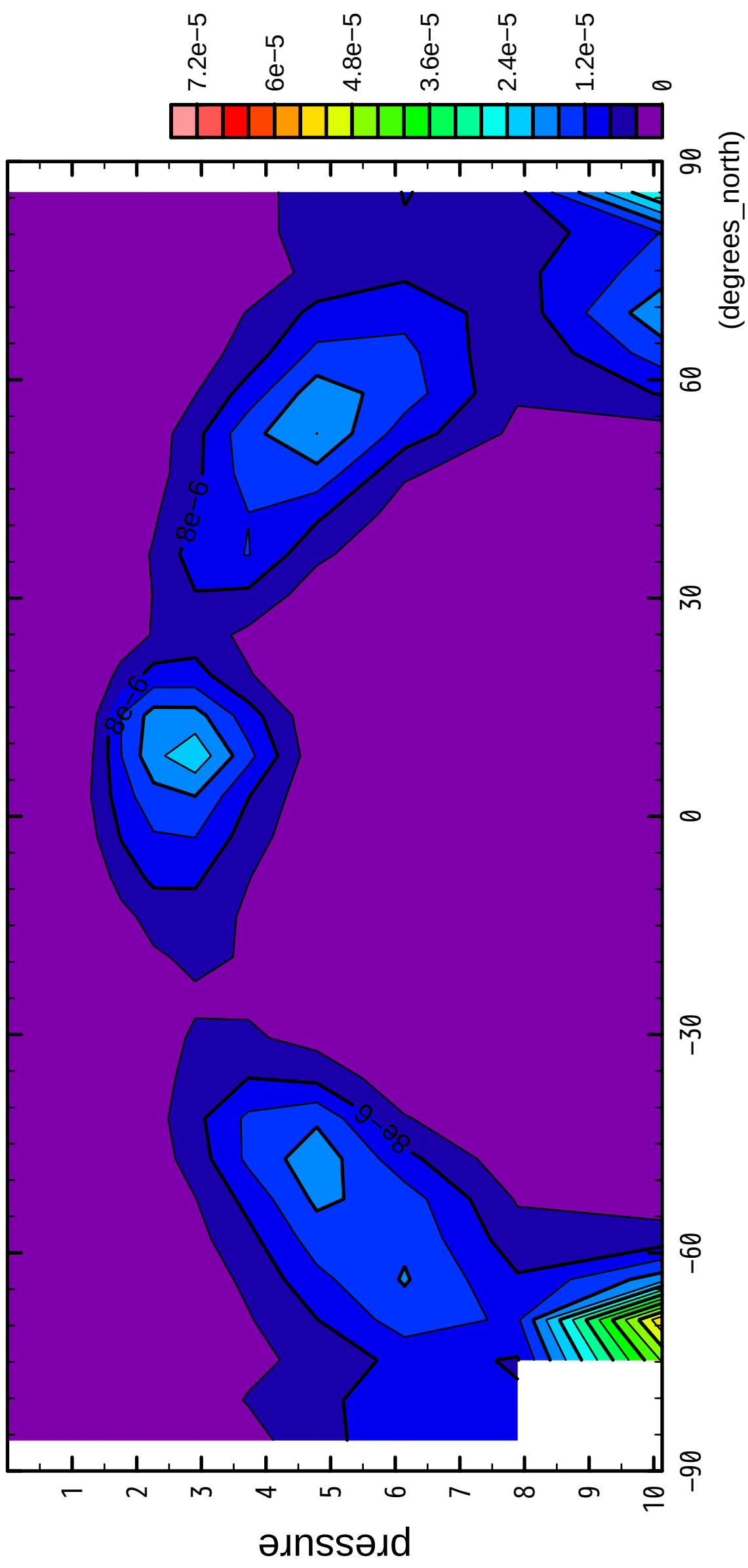
(degrees\_north)

CONTOUR INTERVAL =  $4.000 \times 10^{-6}$

10/12

QH2OSol

( $\times 10^4$  Pa)



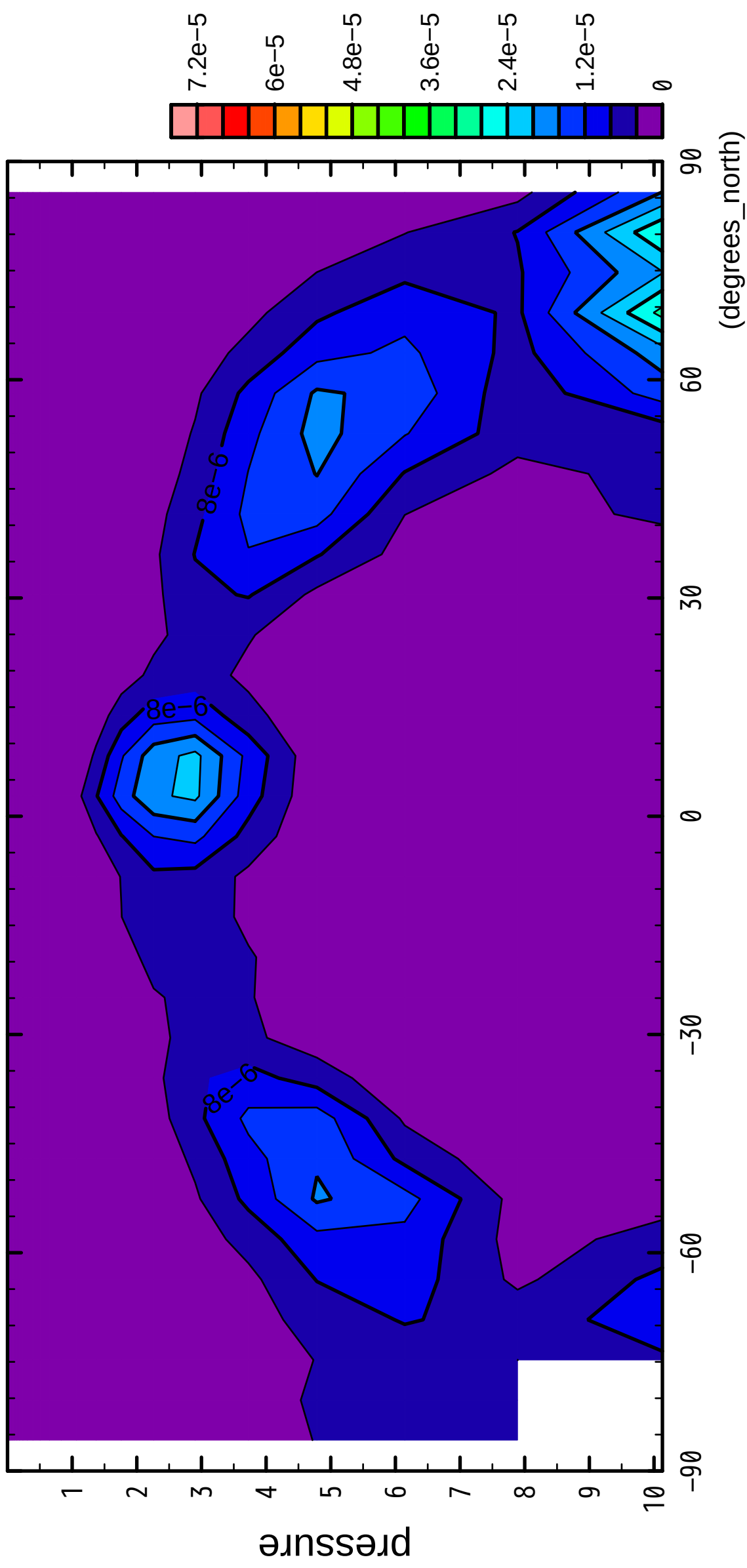
latitude

CONTOUR INTERVAL =  $4.000E-06$

11/12

QH2OSol

( $\times 10^4$  Pa)



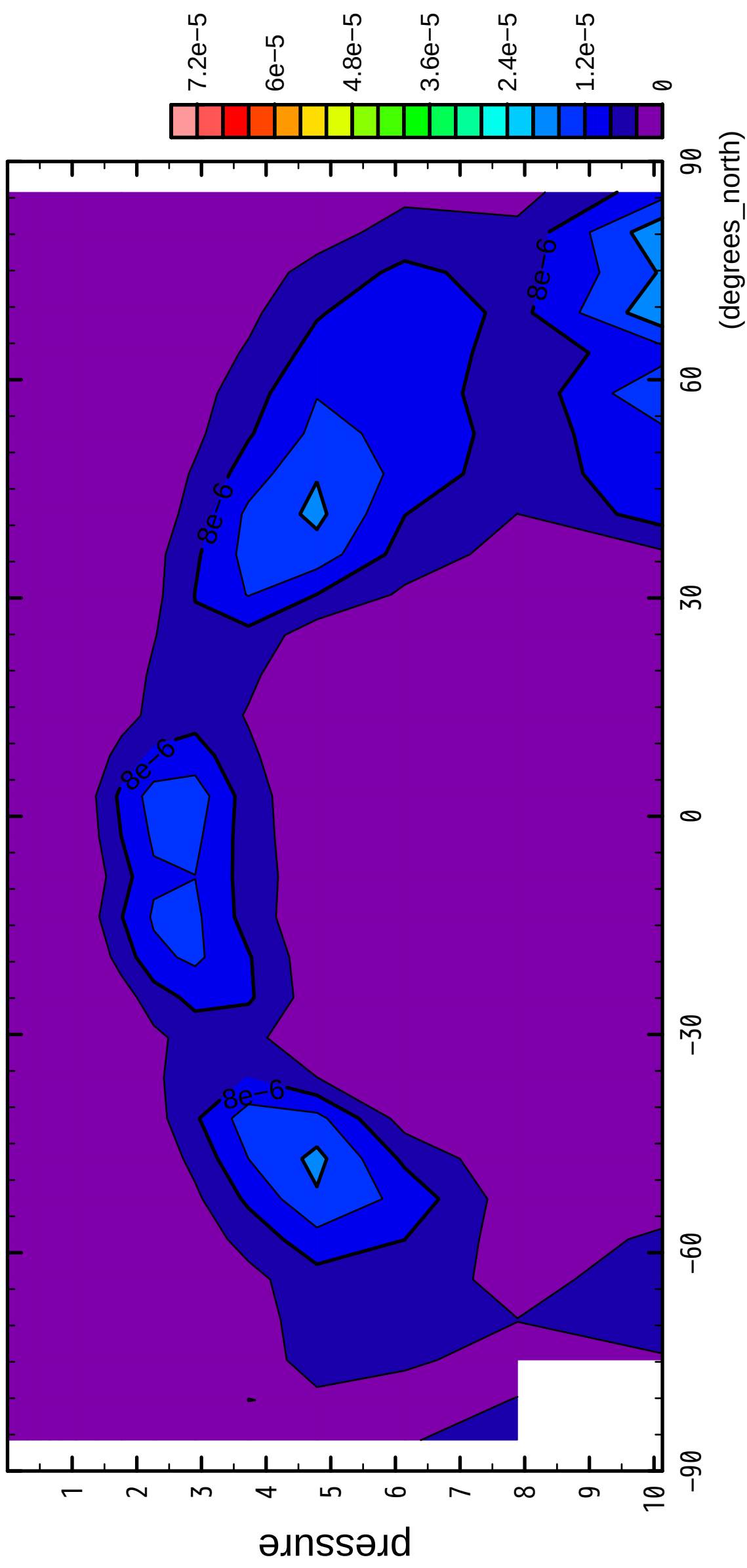
latitude

CONTOUR INTERVAL = 4.000E-06

12/12

QH2OSol

( $\times 10^4$  Pa)



latitude

CONTOUR INTERVAL =  $4.000 \times 10^{-6}$