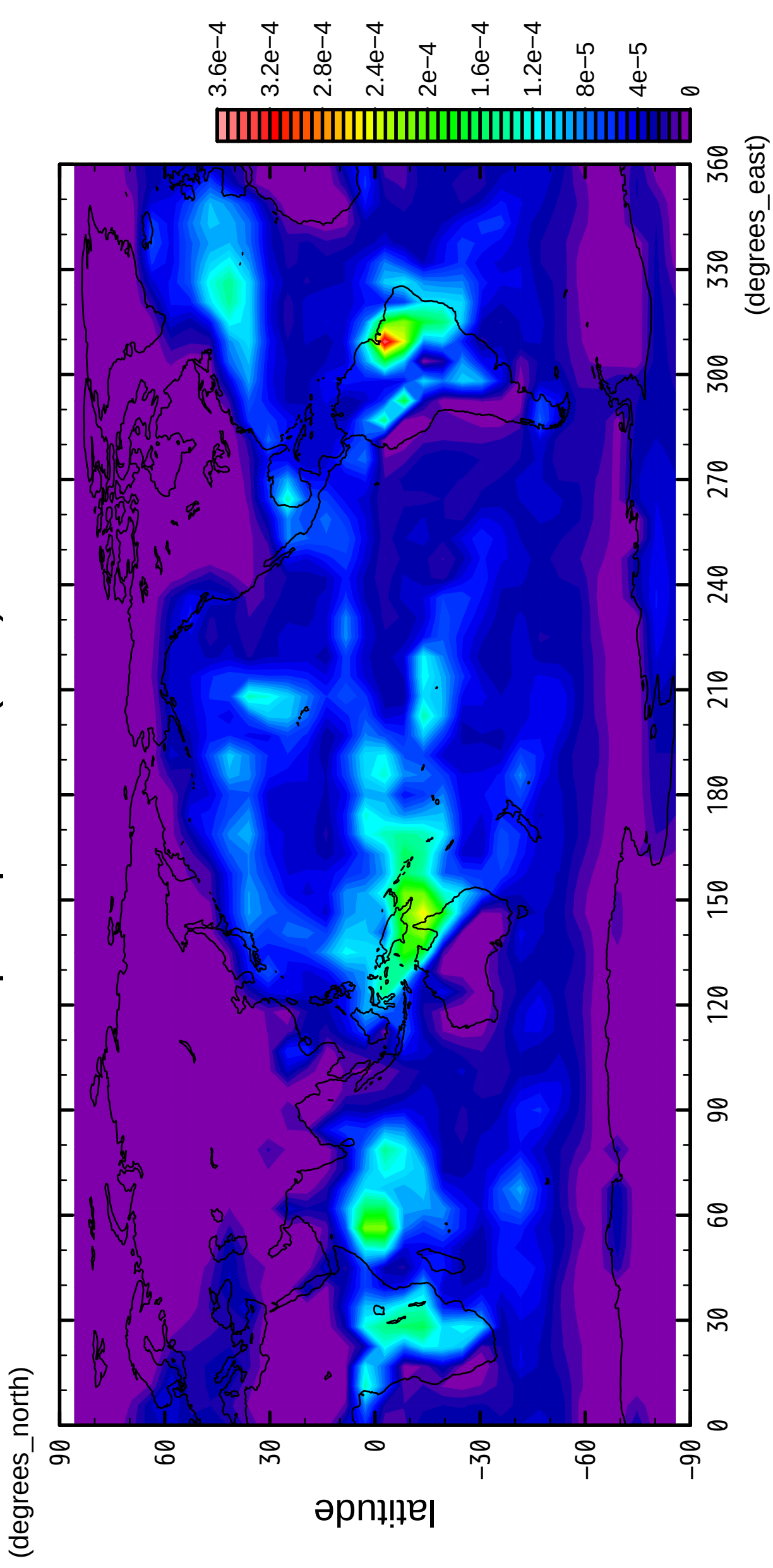


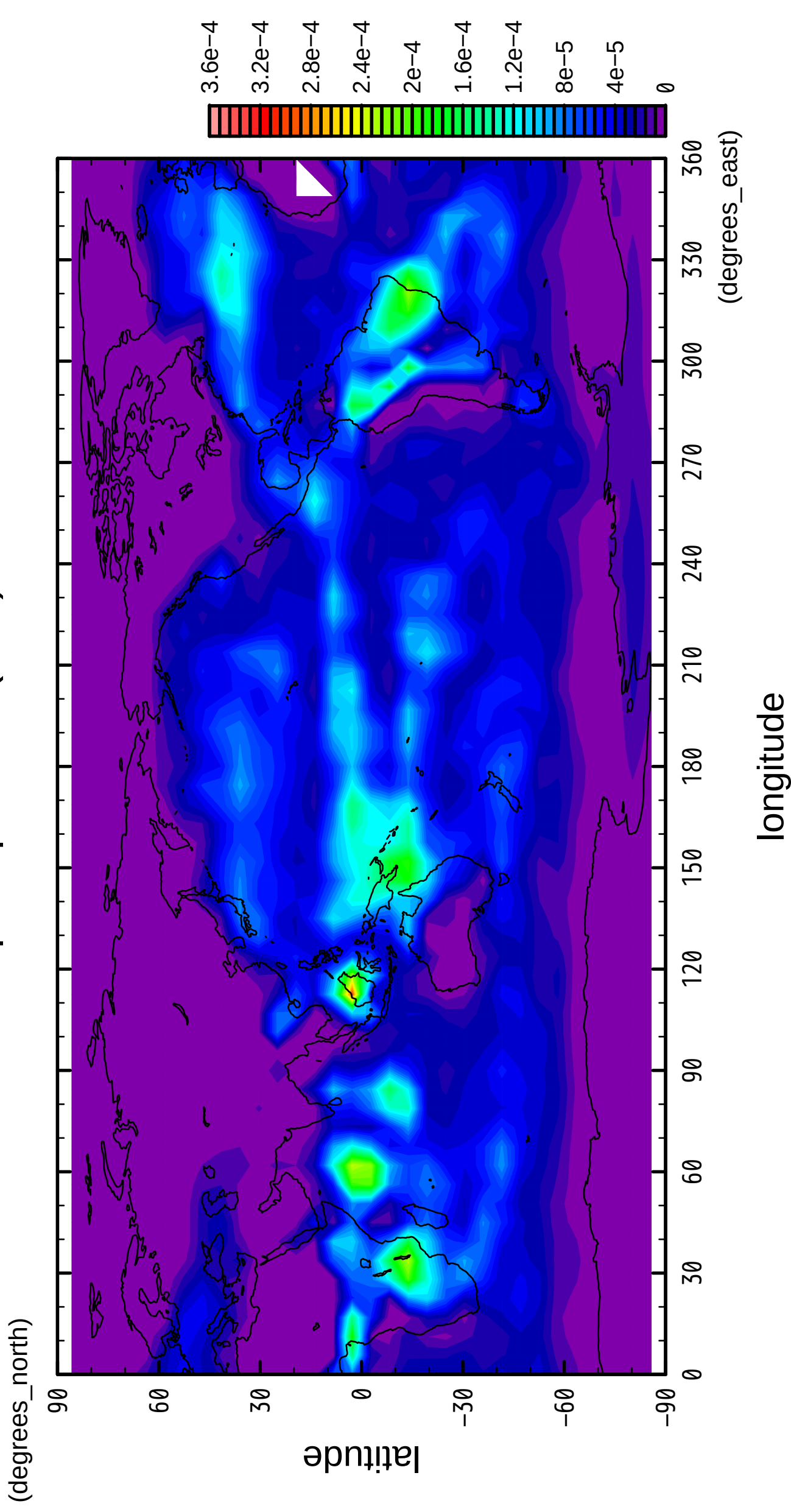
1/12

precipitation (rain)



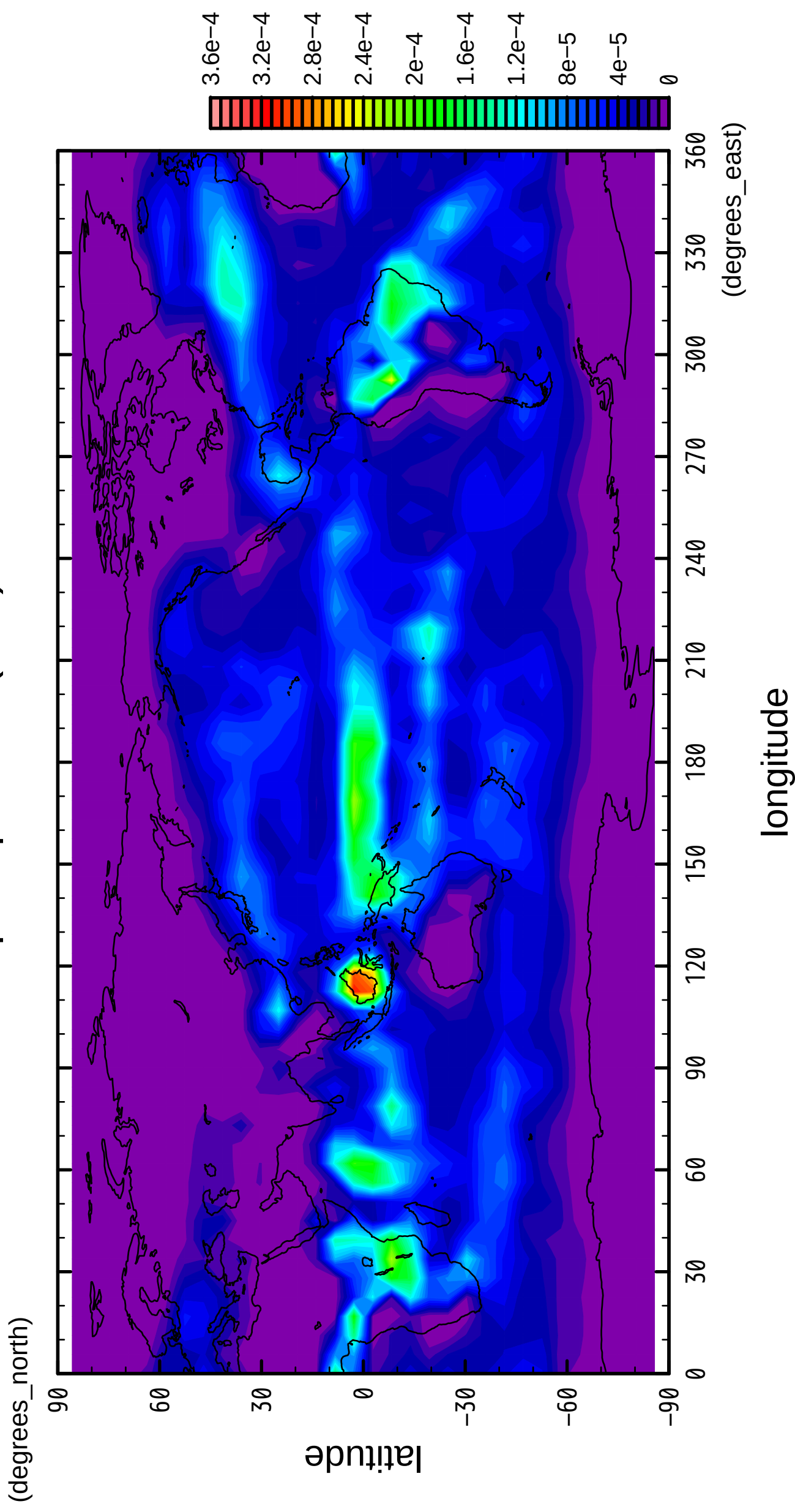
2/12

precipitation (rain)



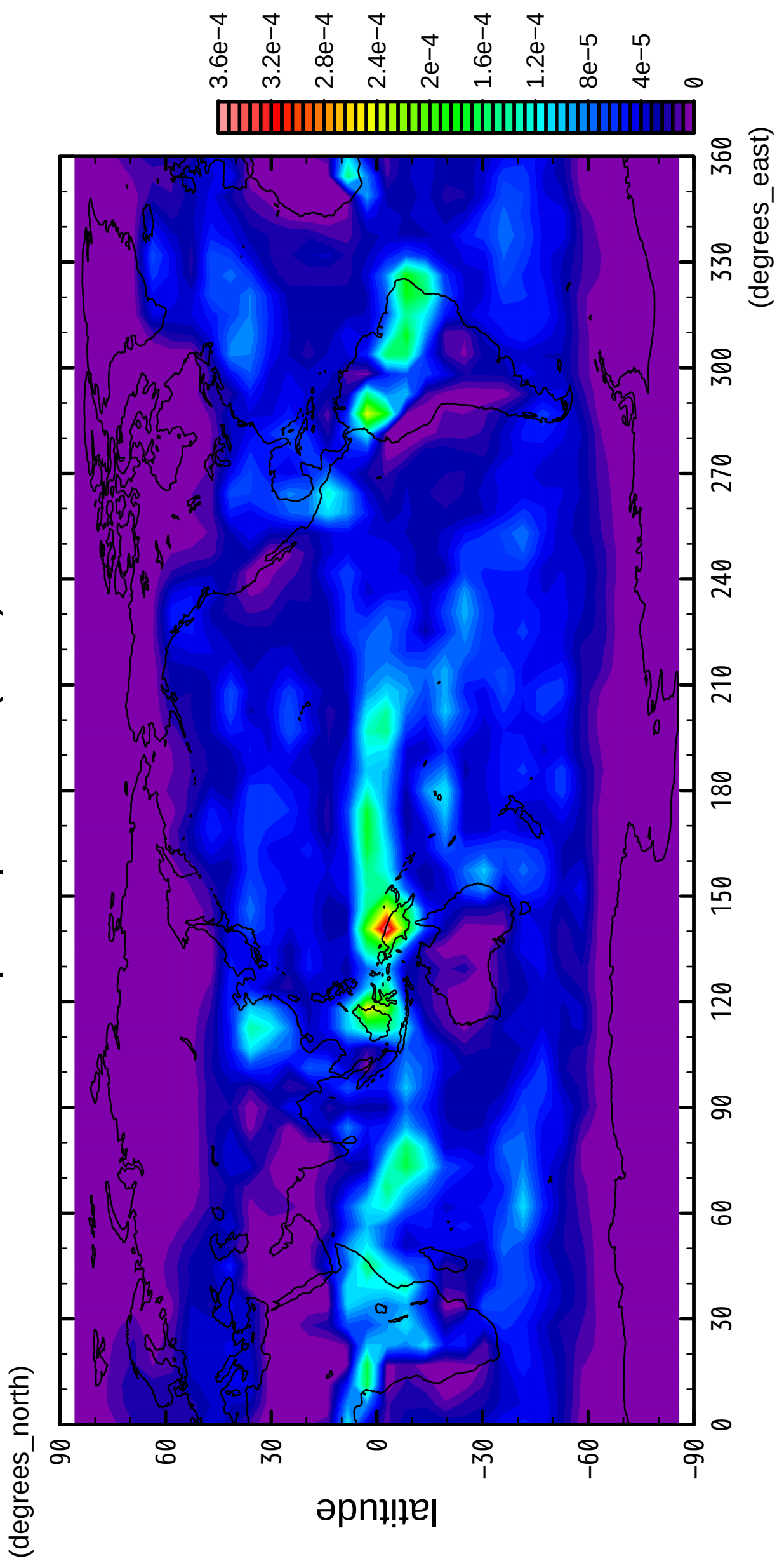
3/12

precipitation (rain)



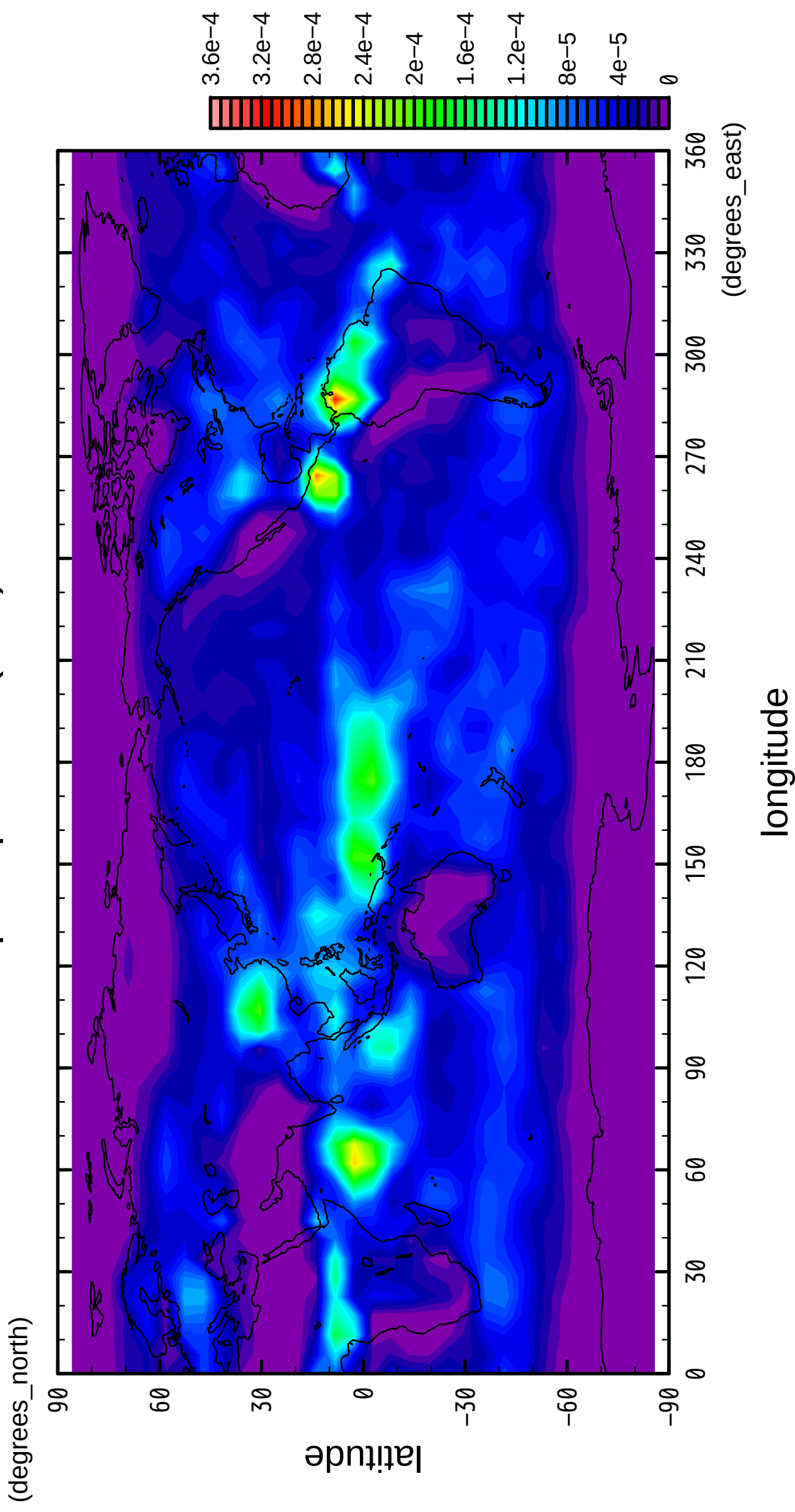
4/12

precipitation (rain)



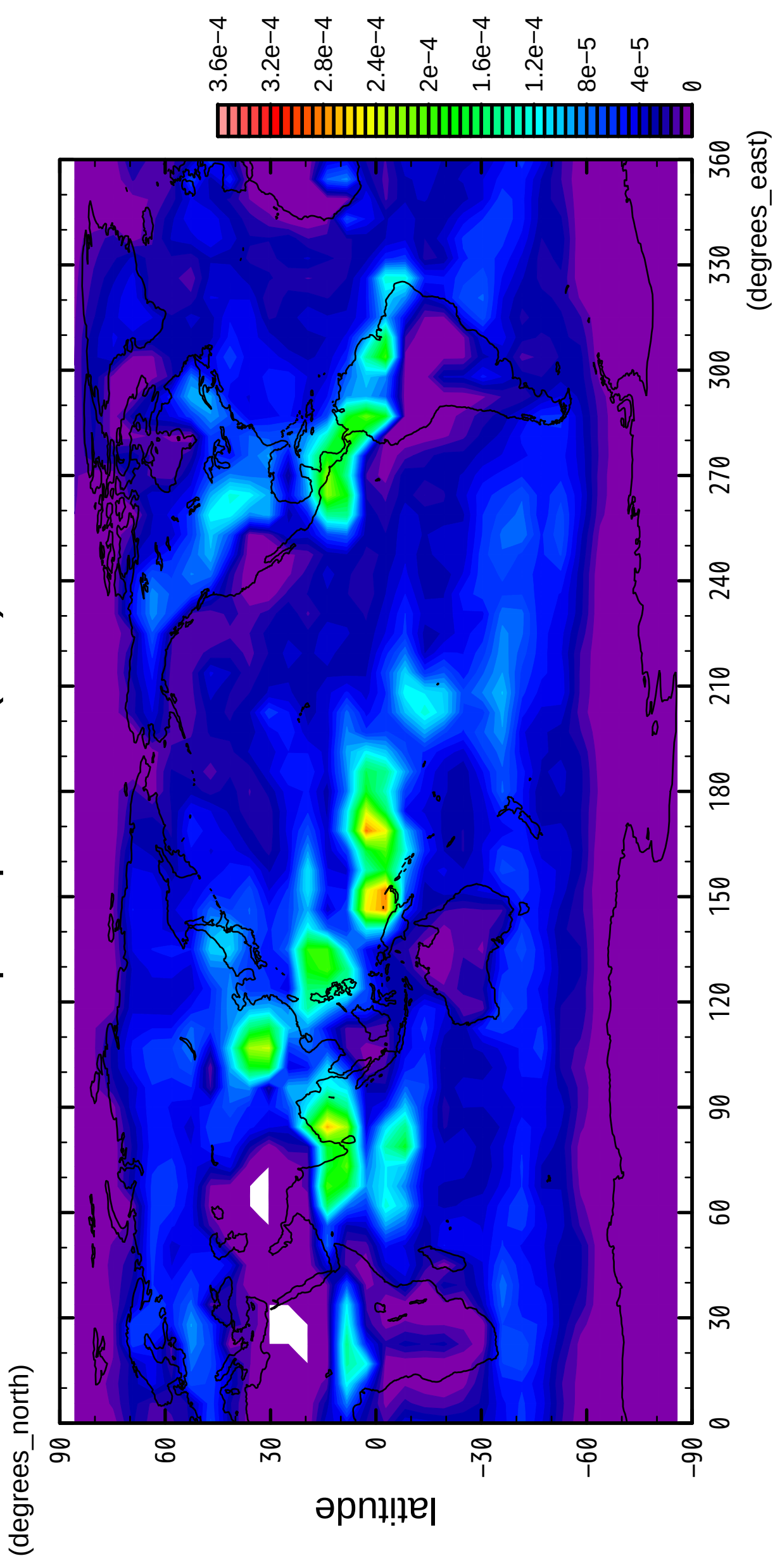
5/12

precipitation (rain)



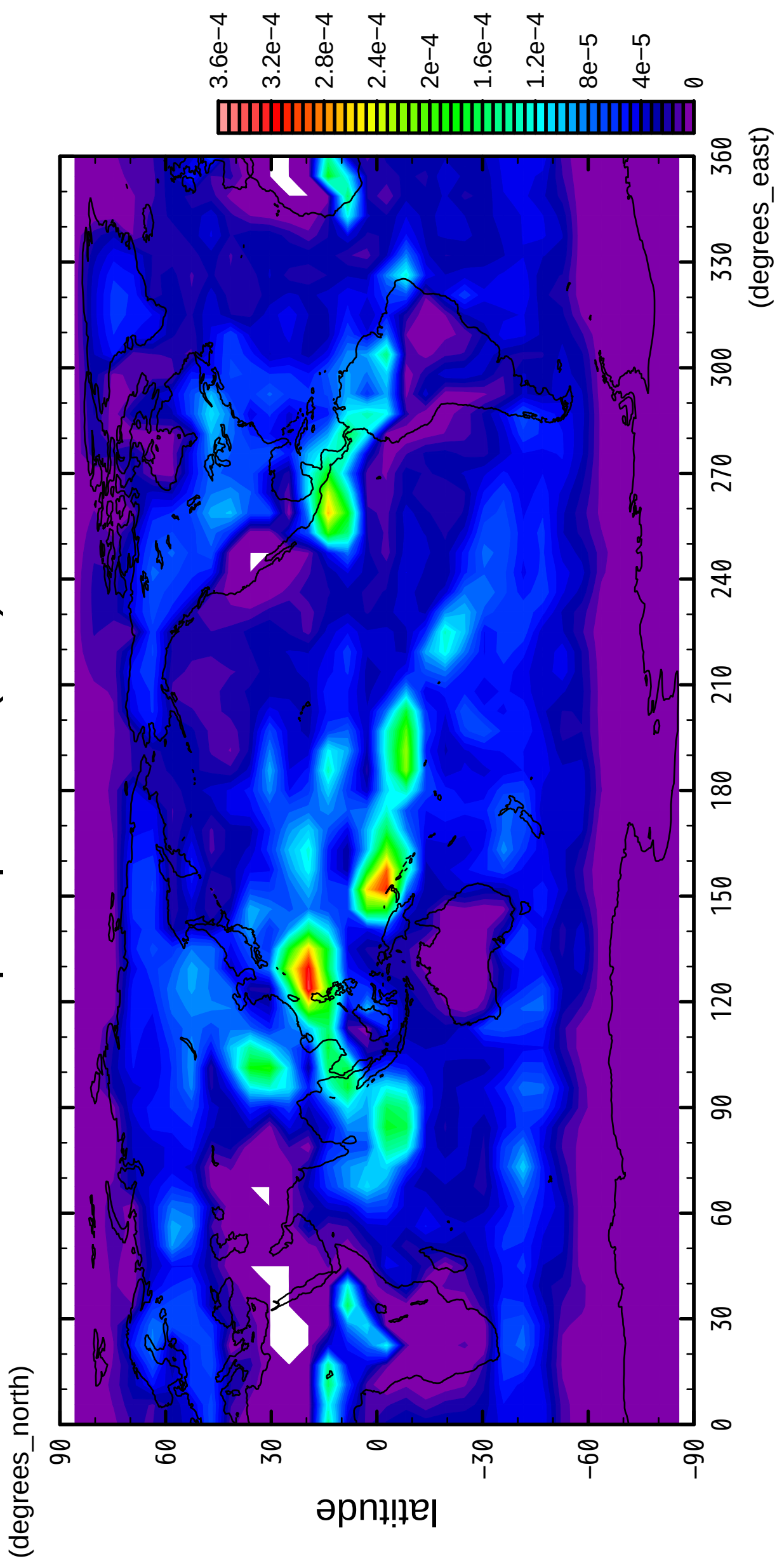
6/12

precipitation (rain)



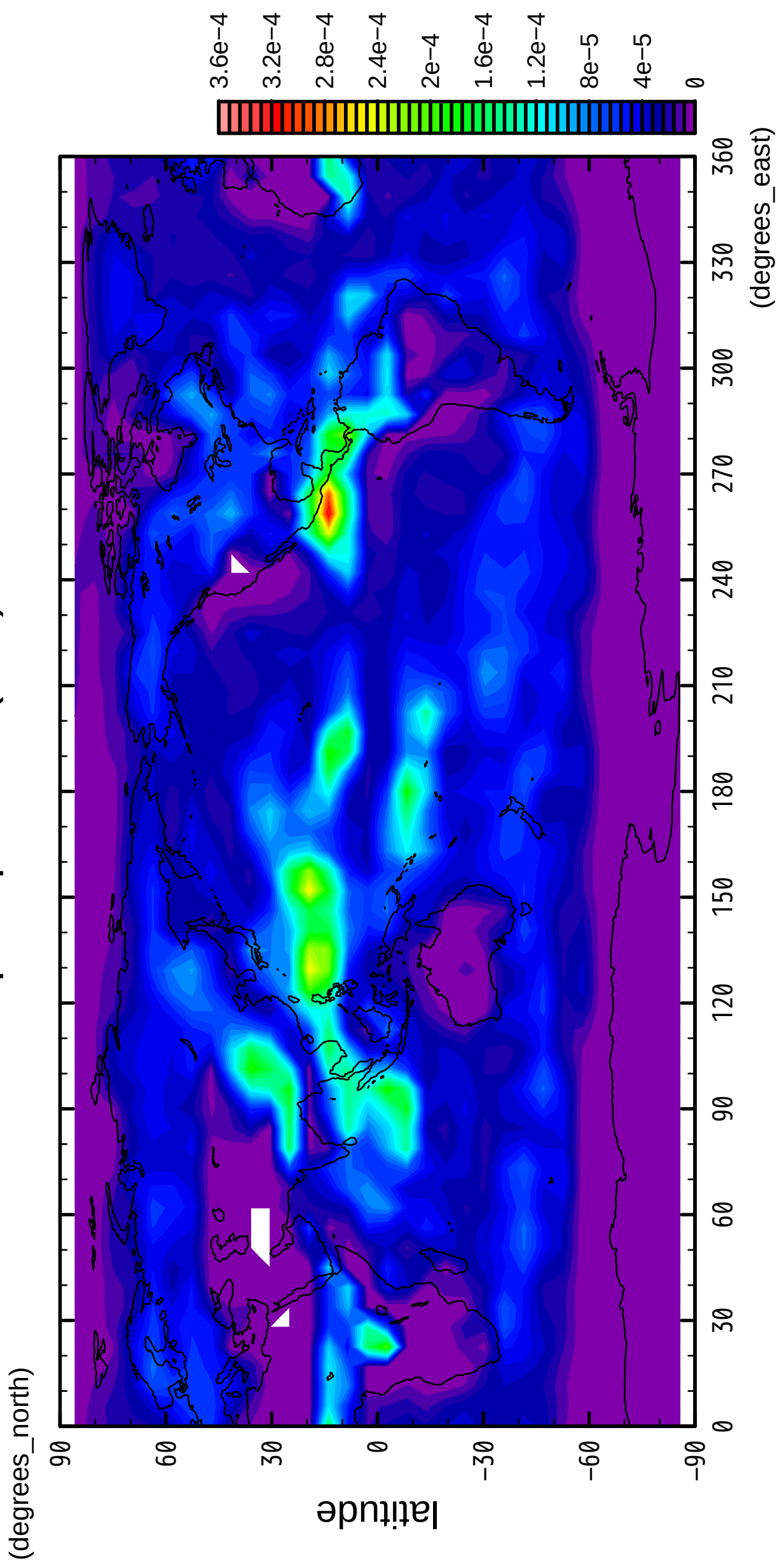
7/12

precipitation (rain)



8/12

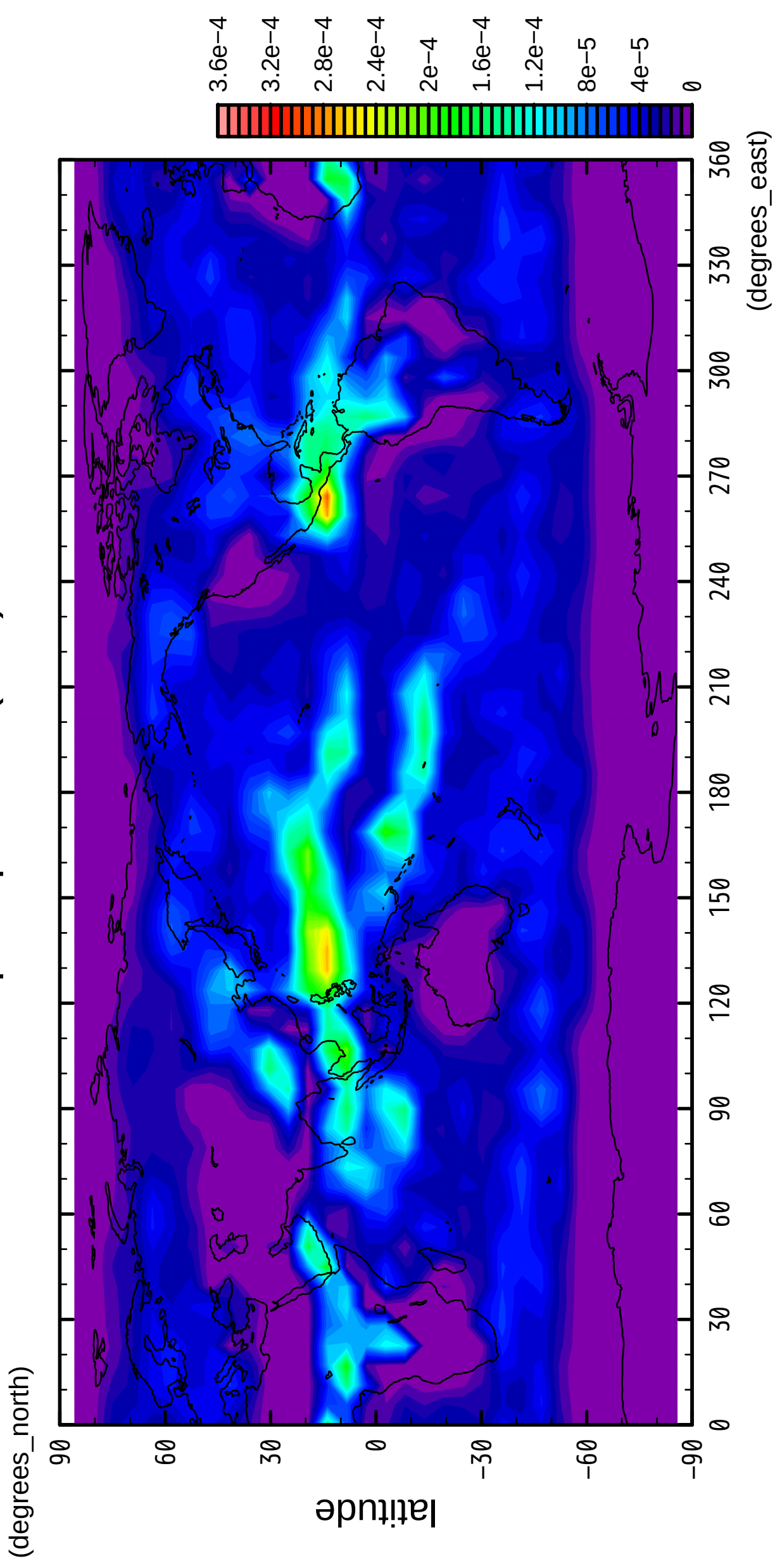
precipitation (rain)



longitude

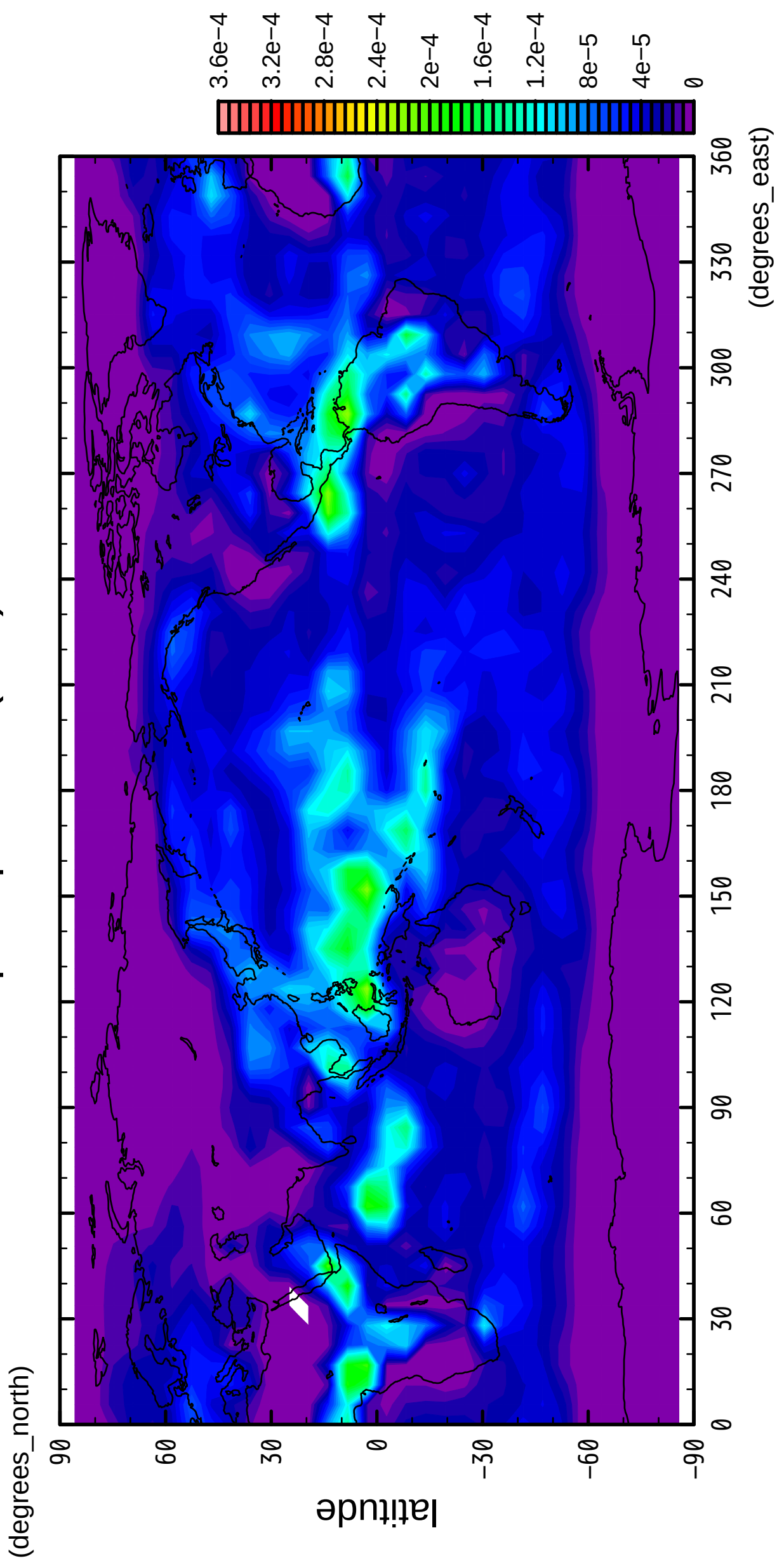
9/12

precipitation (rain)



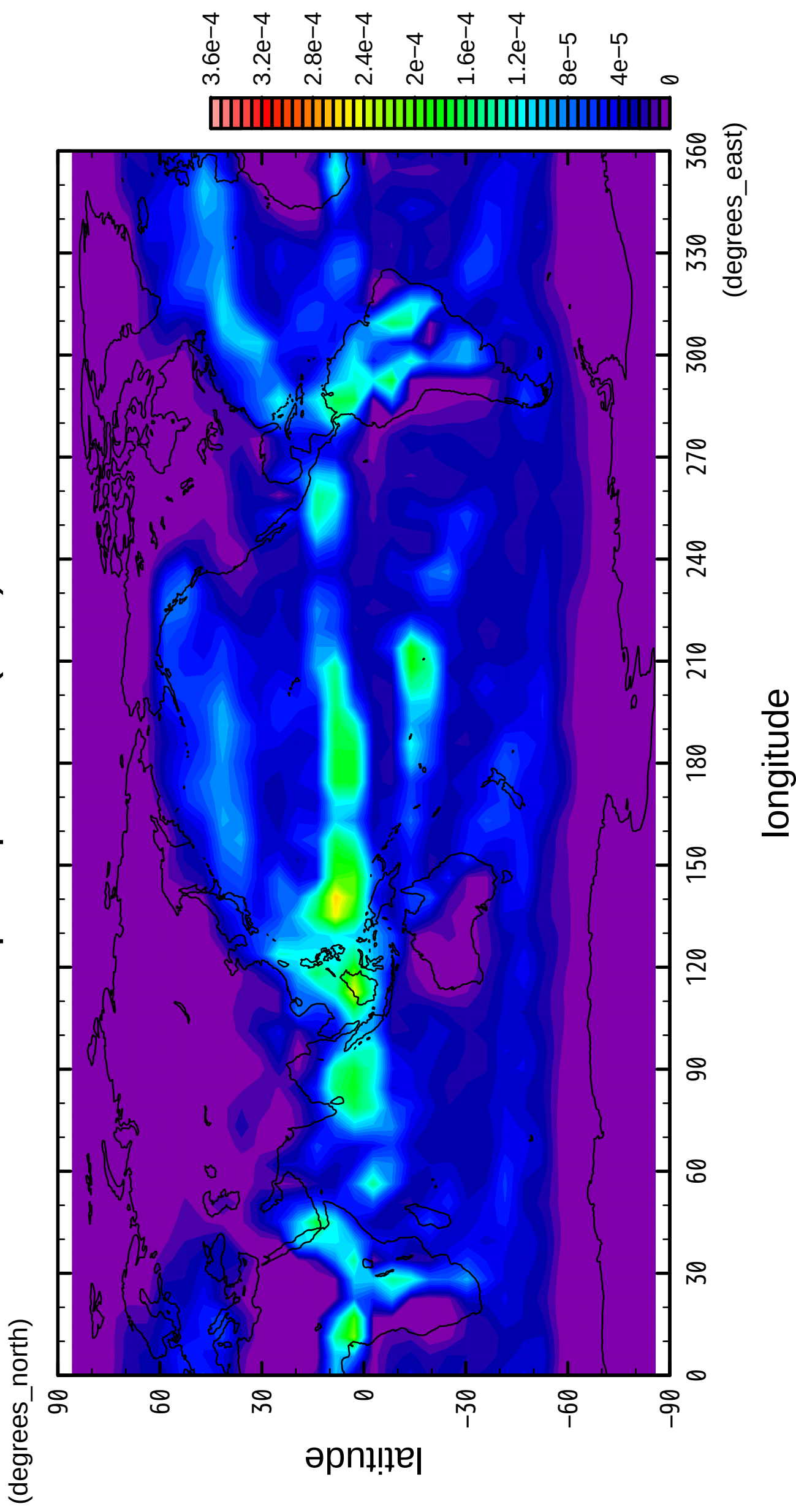
10/12

precipitation (rain)



11/12

precipitation (rain)



12/12

precipitation (rain)

