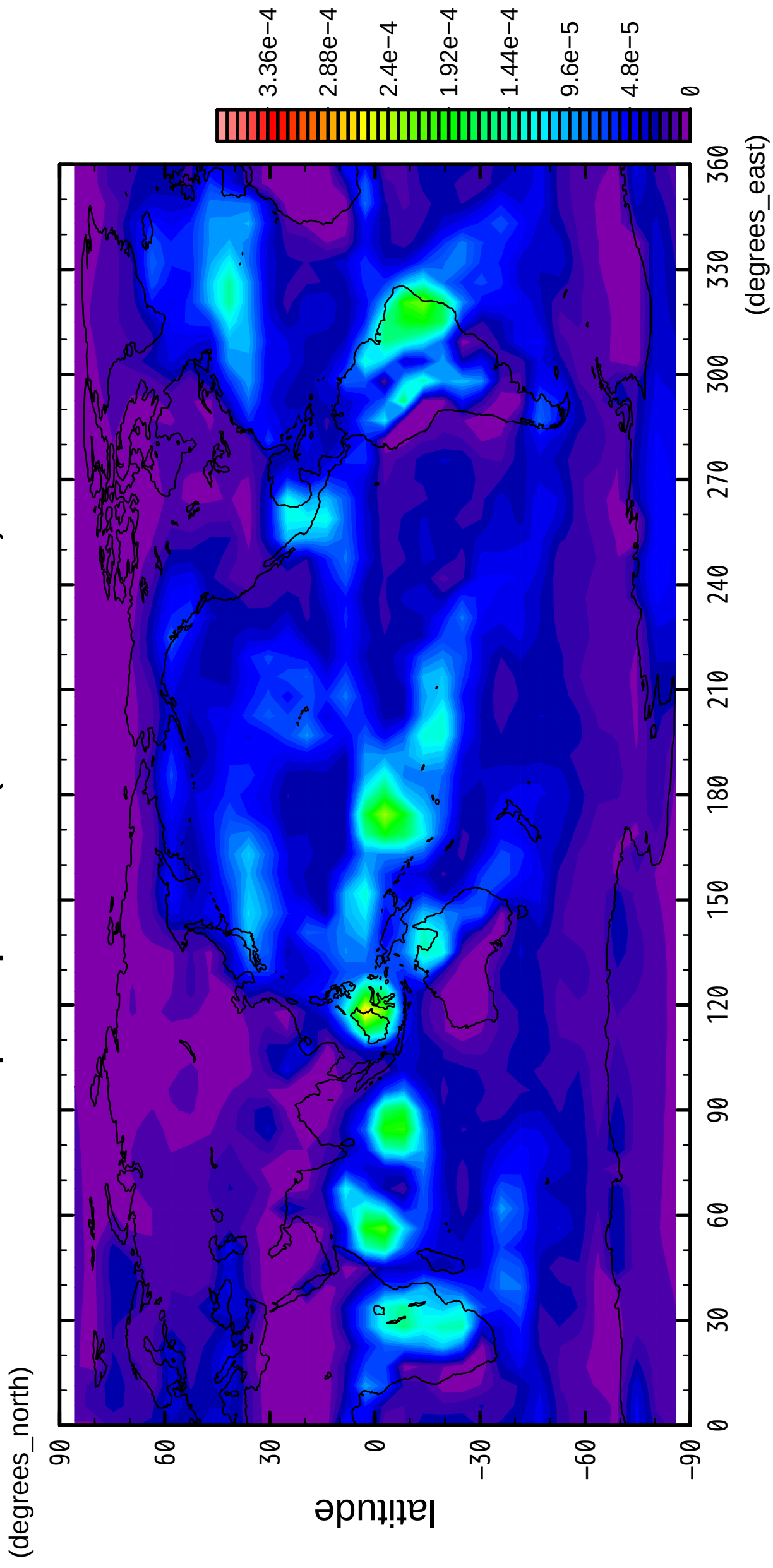


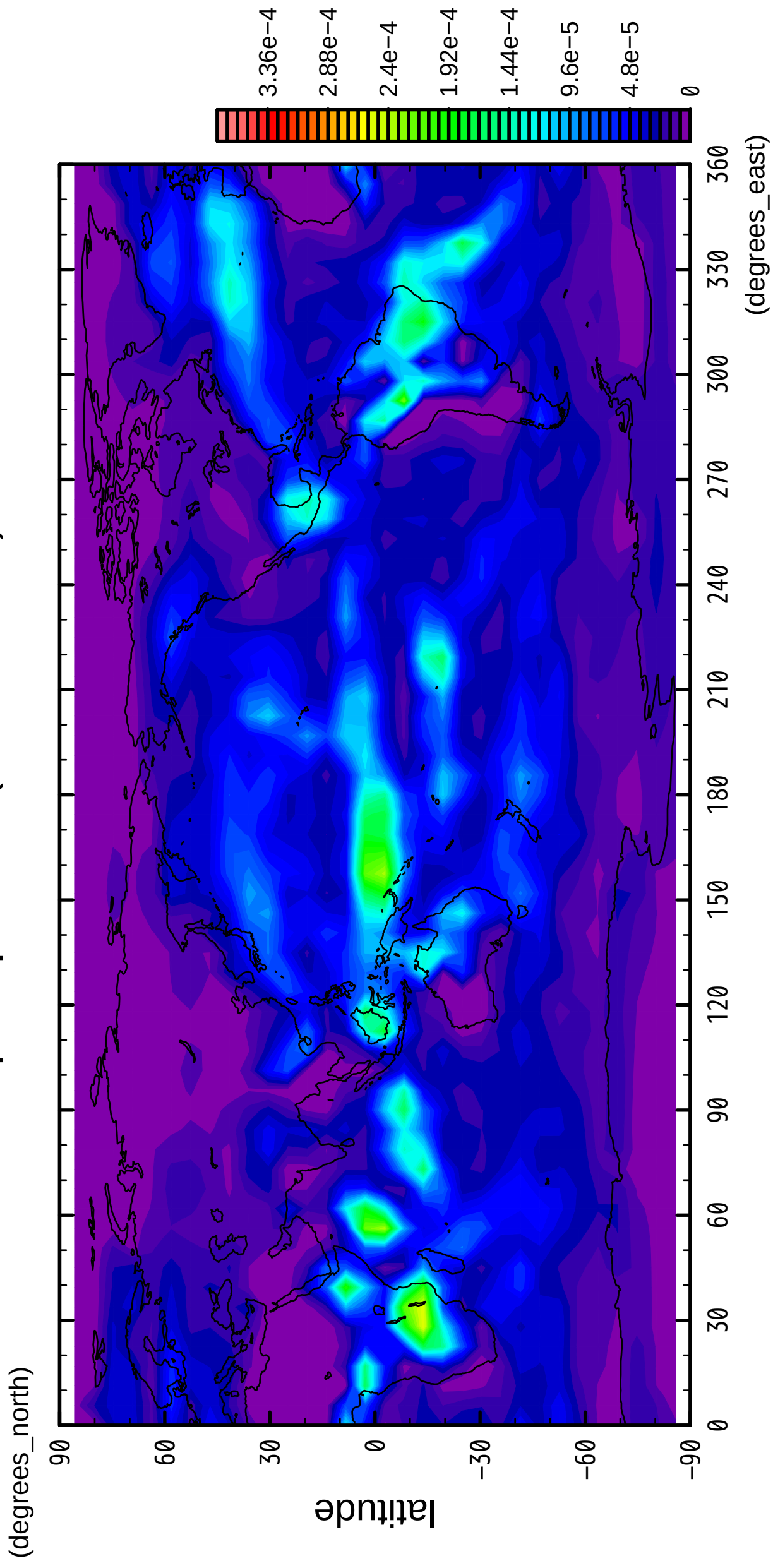
1/12

# precipitation (rain + snow)



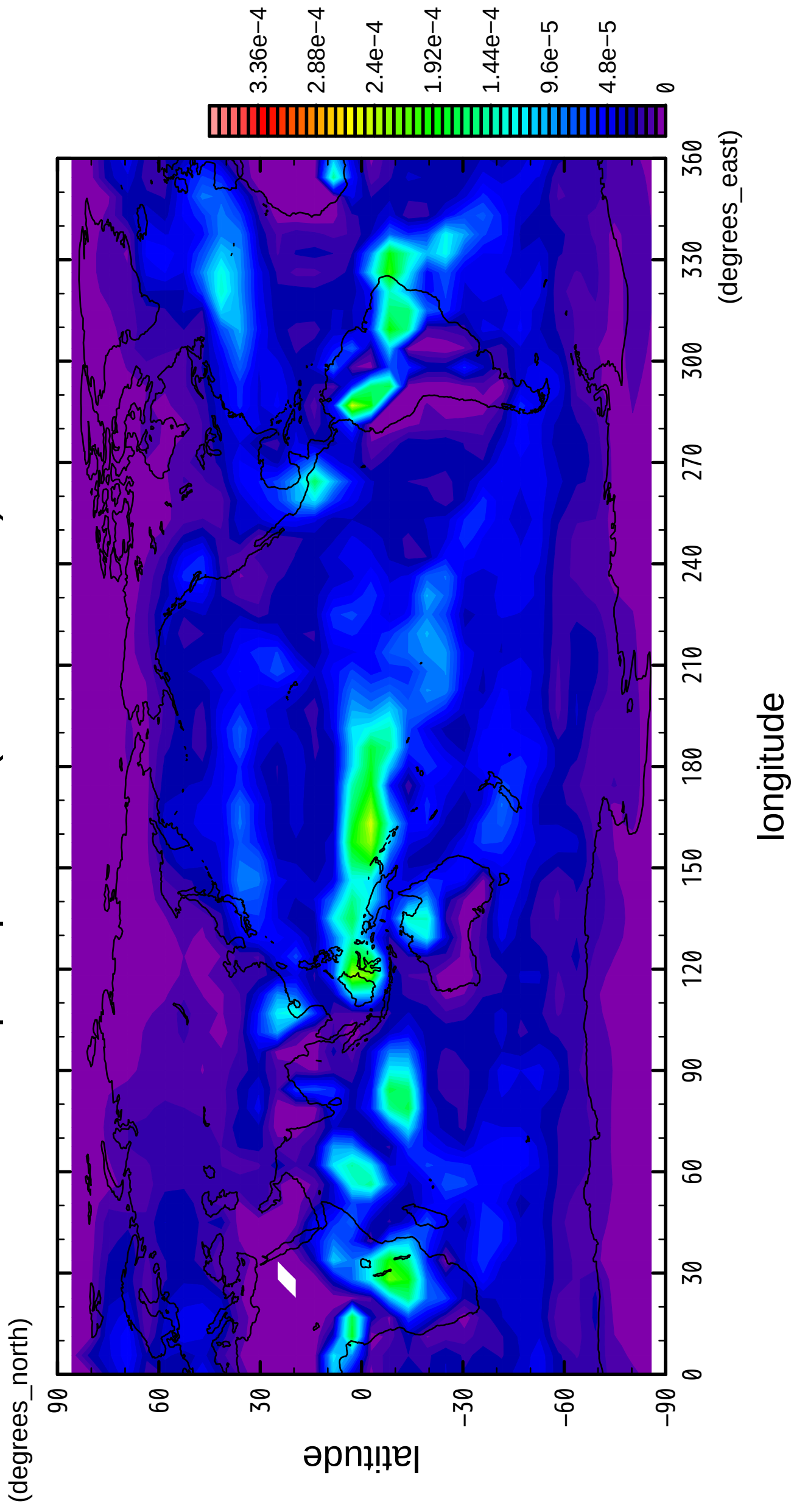
2/12

# precipitation (rain + snow)



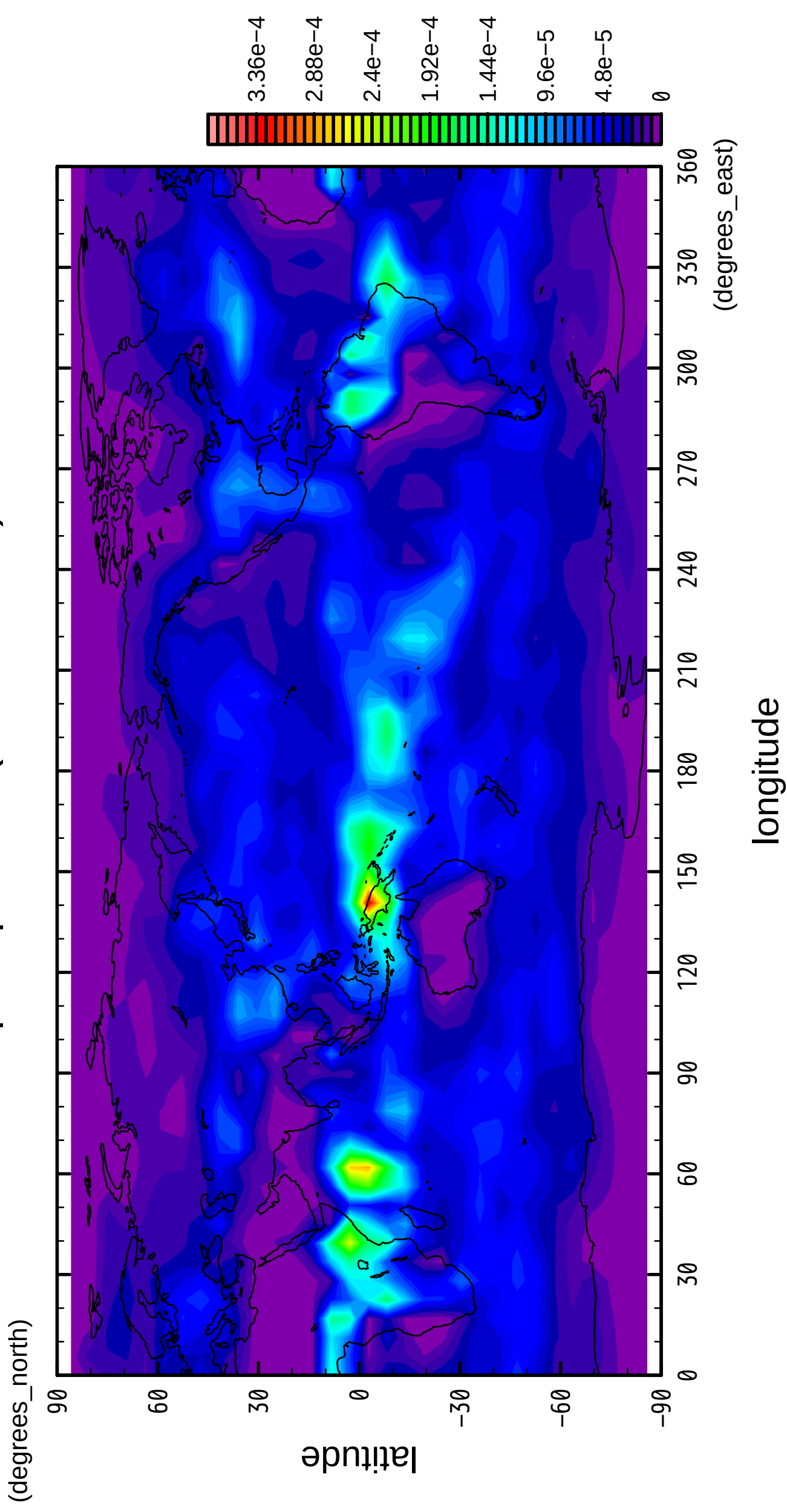
3/12

# precipitation (rain + snow)



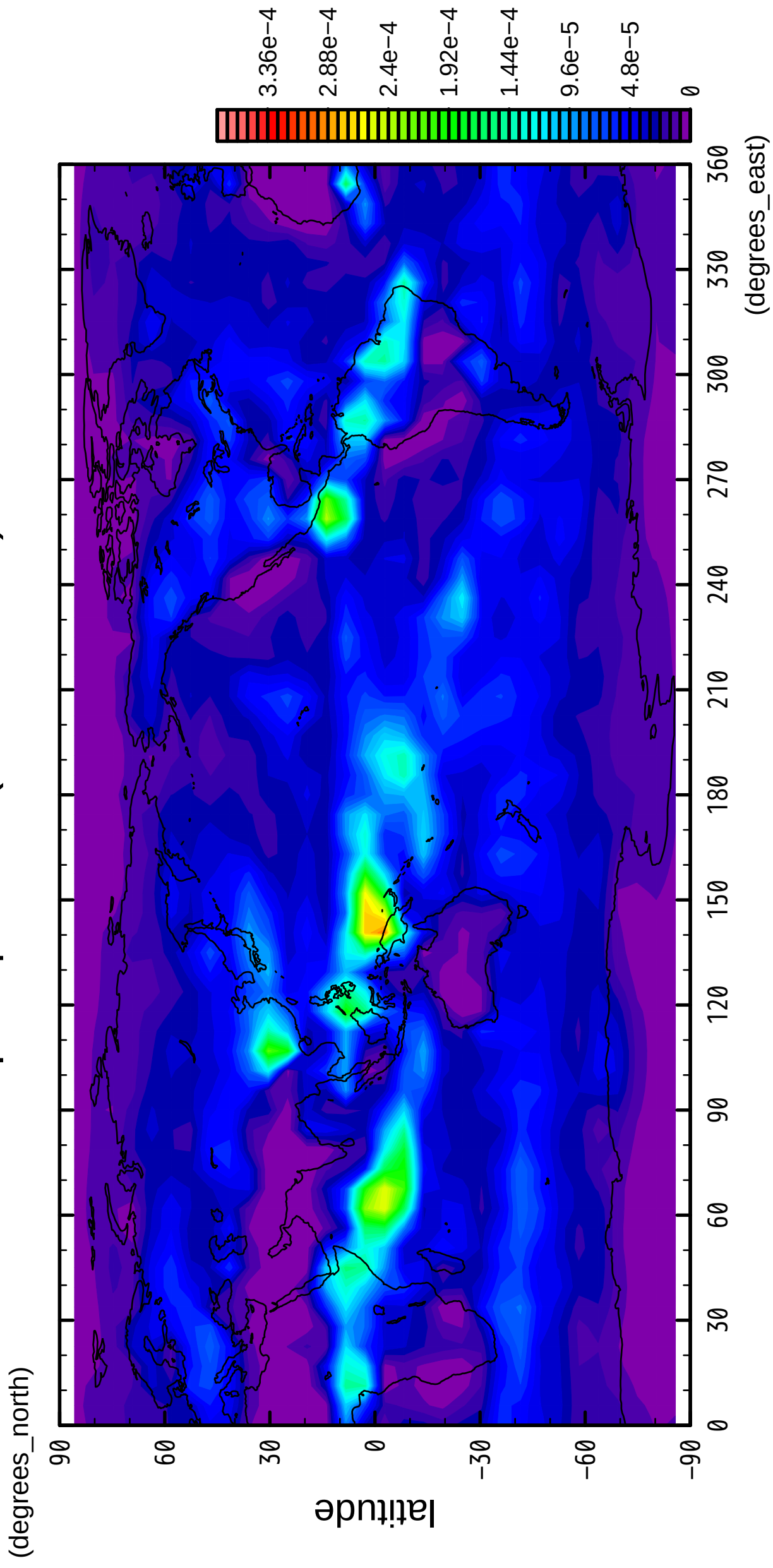
4/12

precipitation (rain + snow)



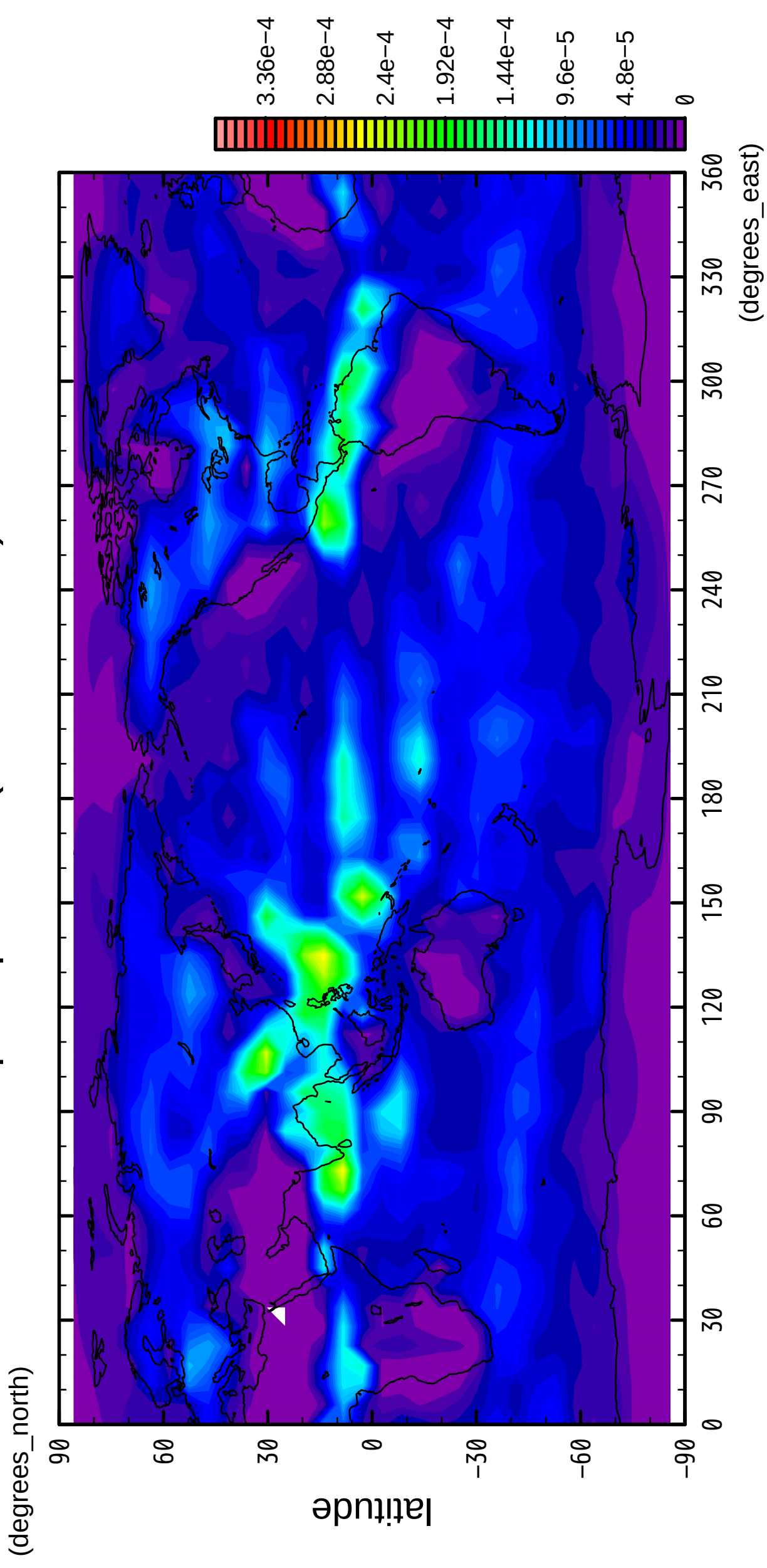
5/12

# precipitation (rain + snow)



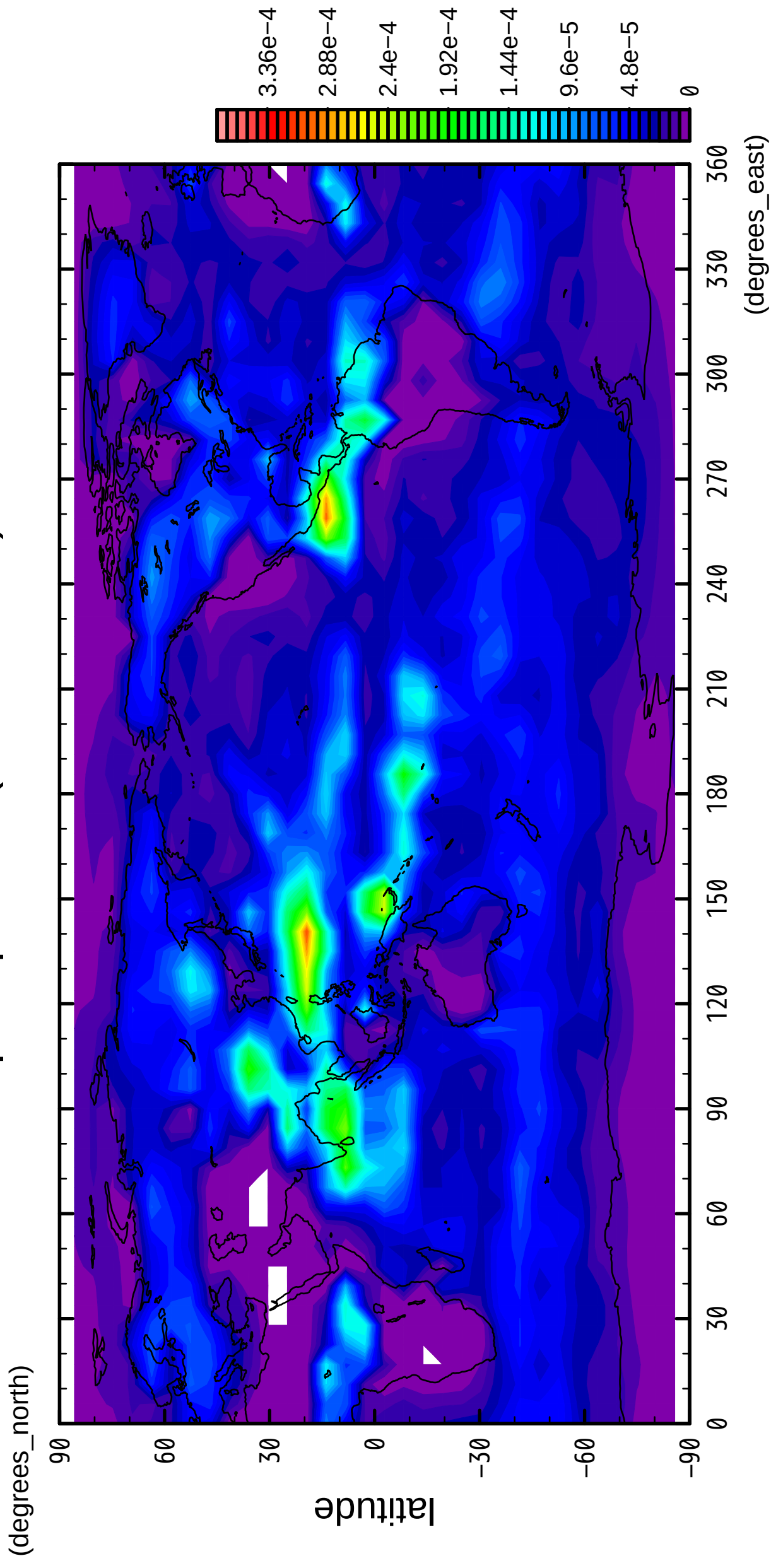
6/12

precipitation (rain + snow)



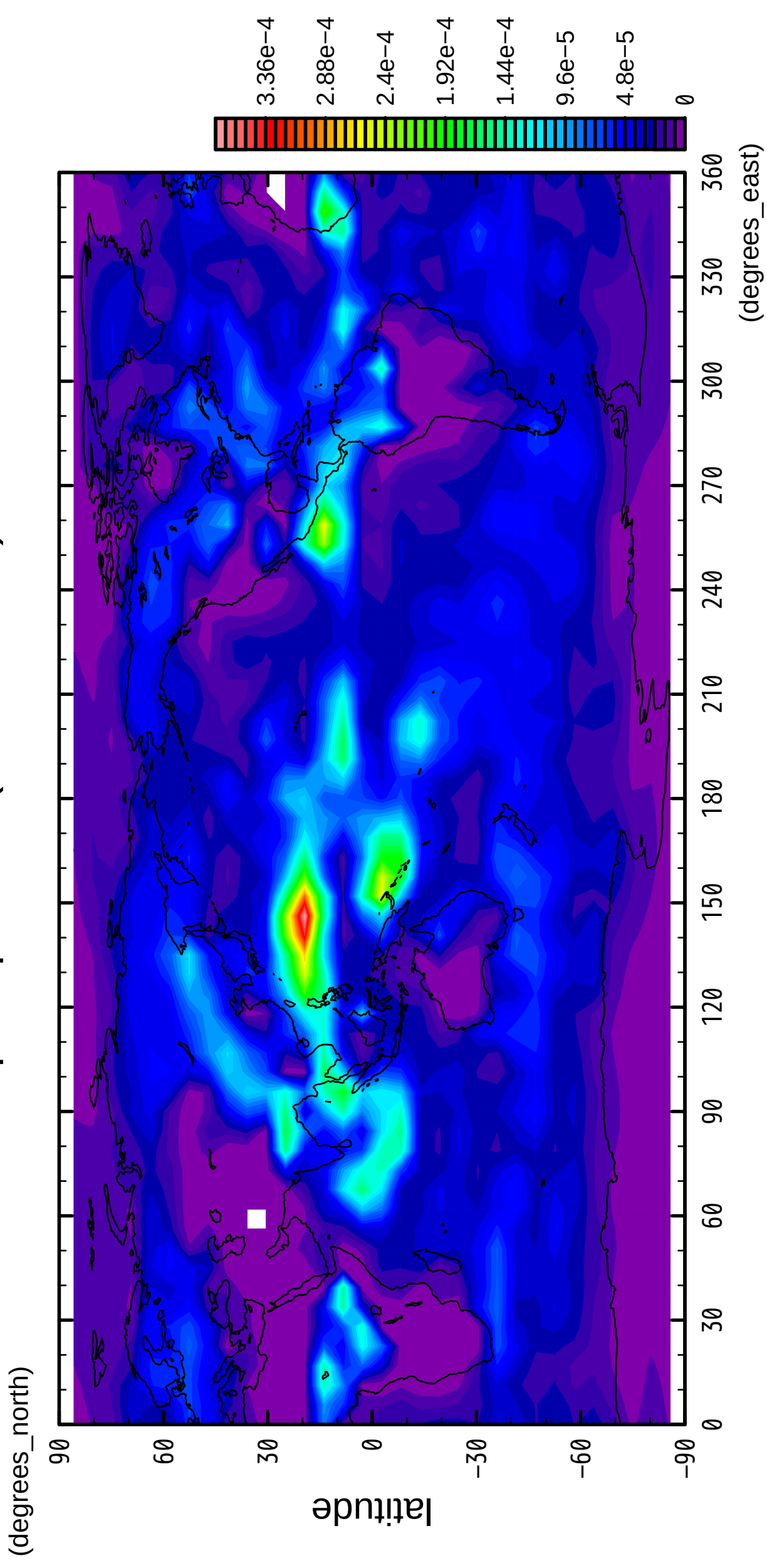
7/12

# precipitation (rain + snow)



8/12

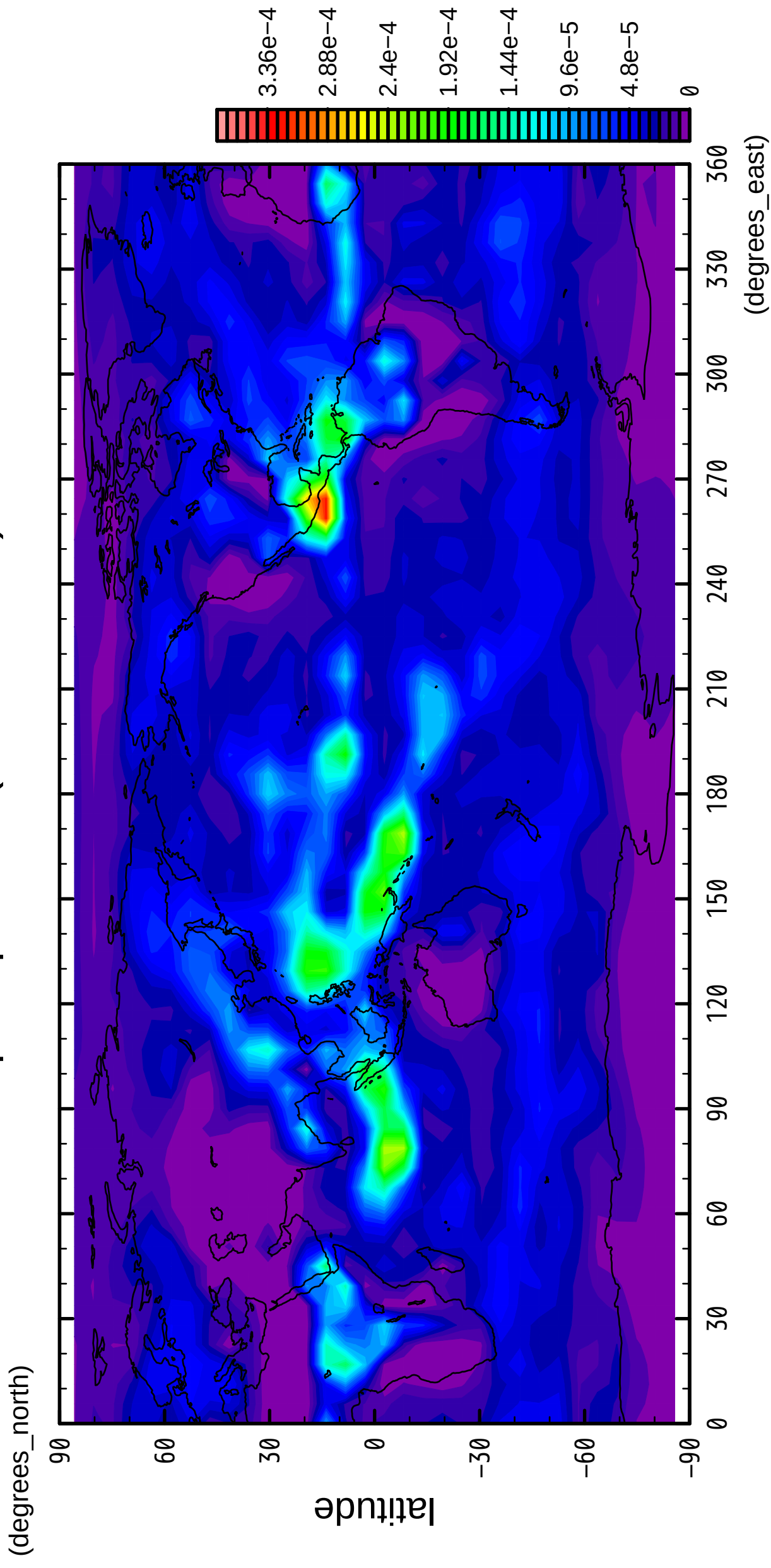
precipitation (rain + snow)





9/12

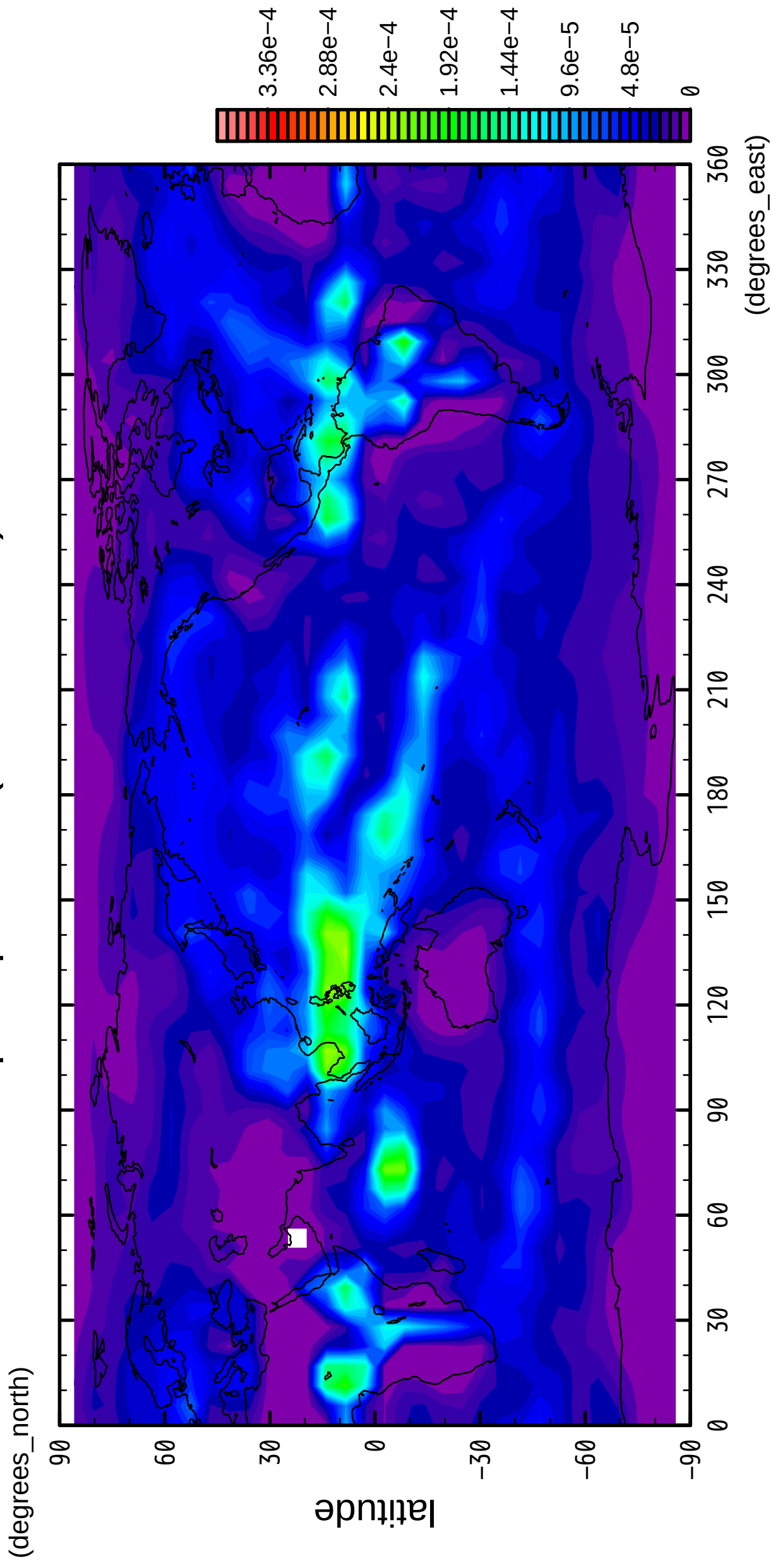
precipitation (rain + snow)



longitude

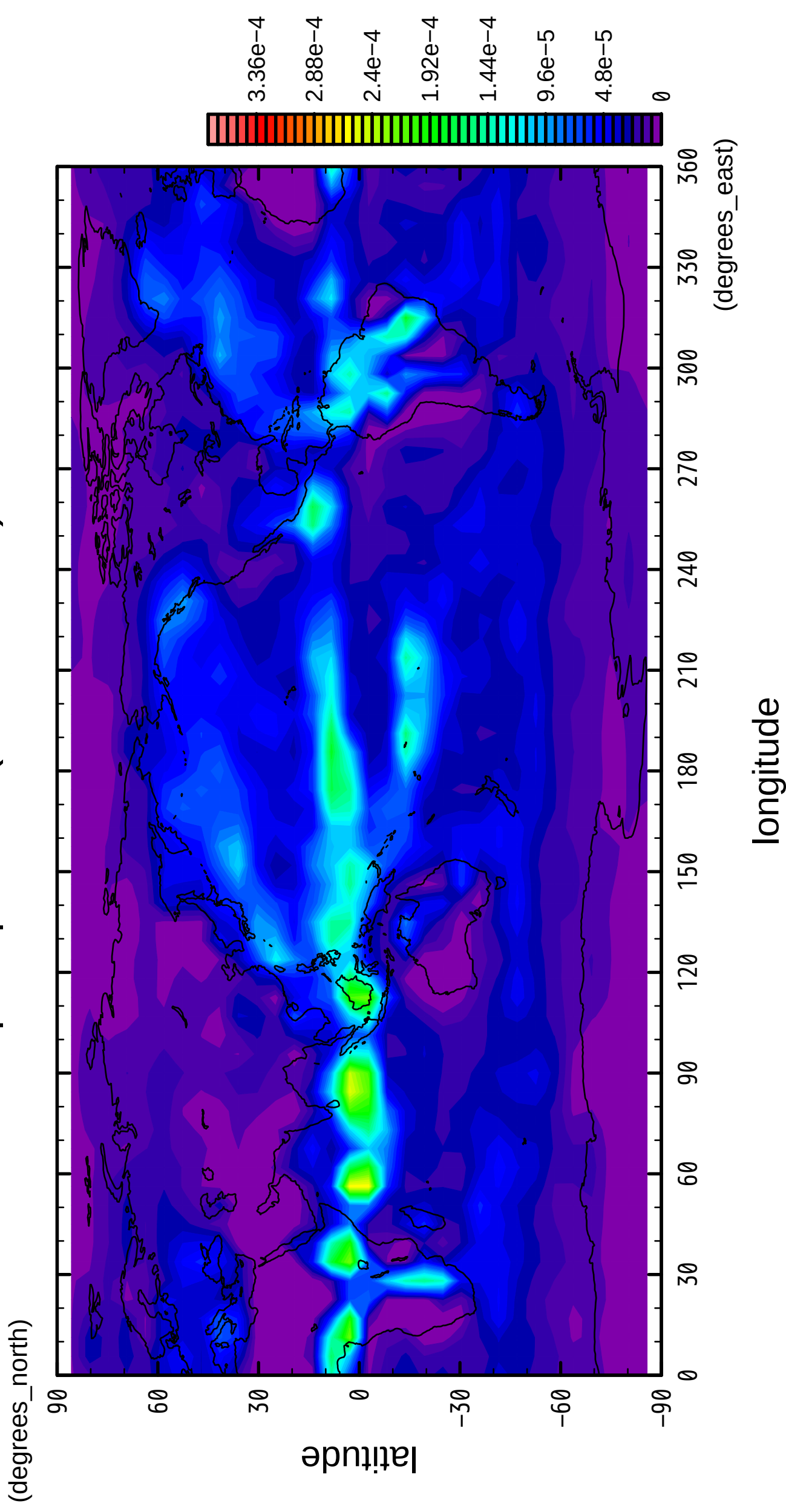
10/12

precipitation (rain + snow)



11/12

precipitation (rain + snow)



12/12

precipitation (rain + snow)

