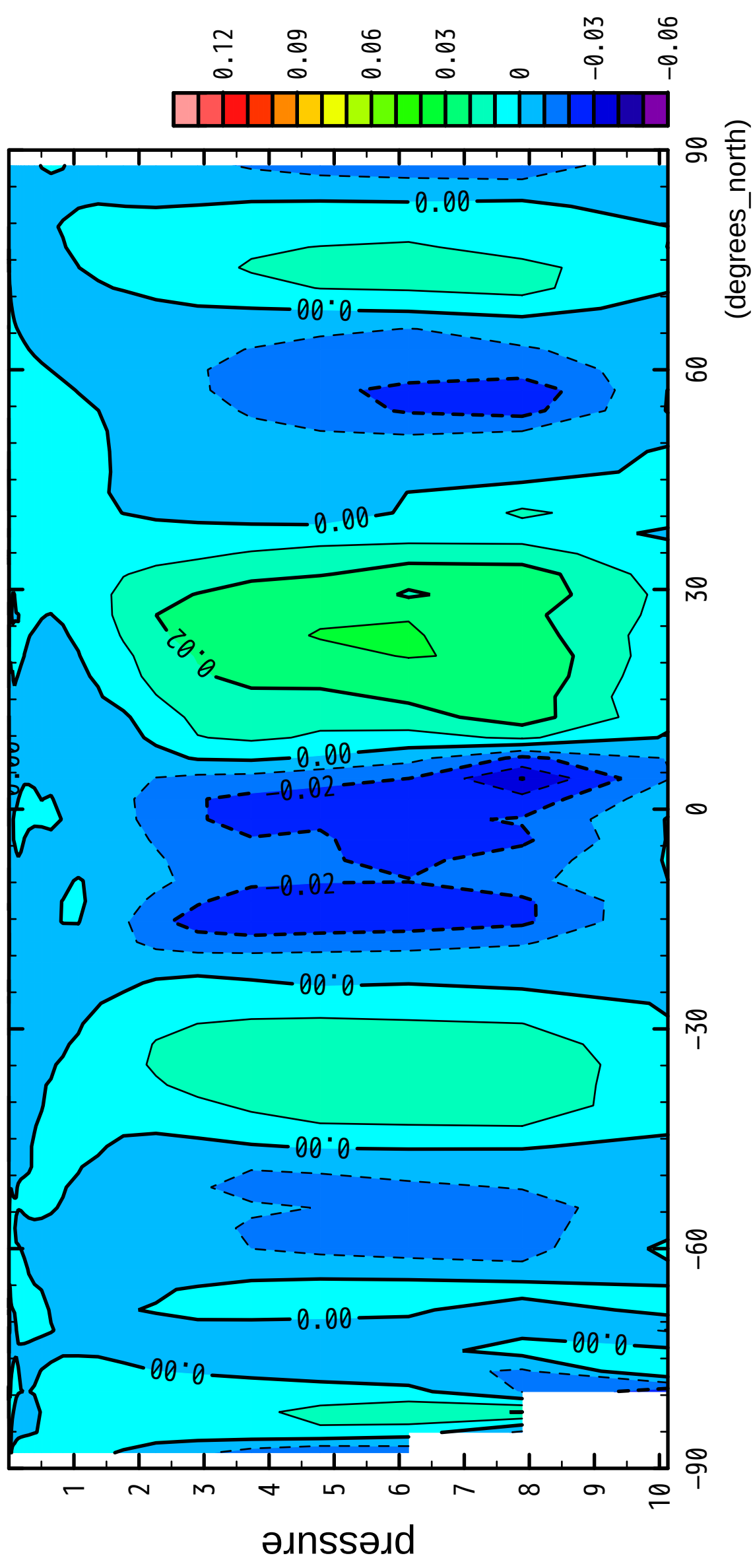


1/12

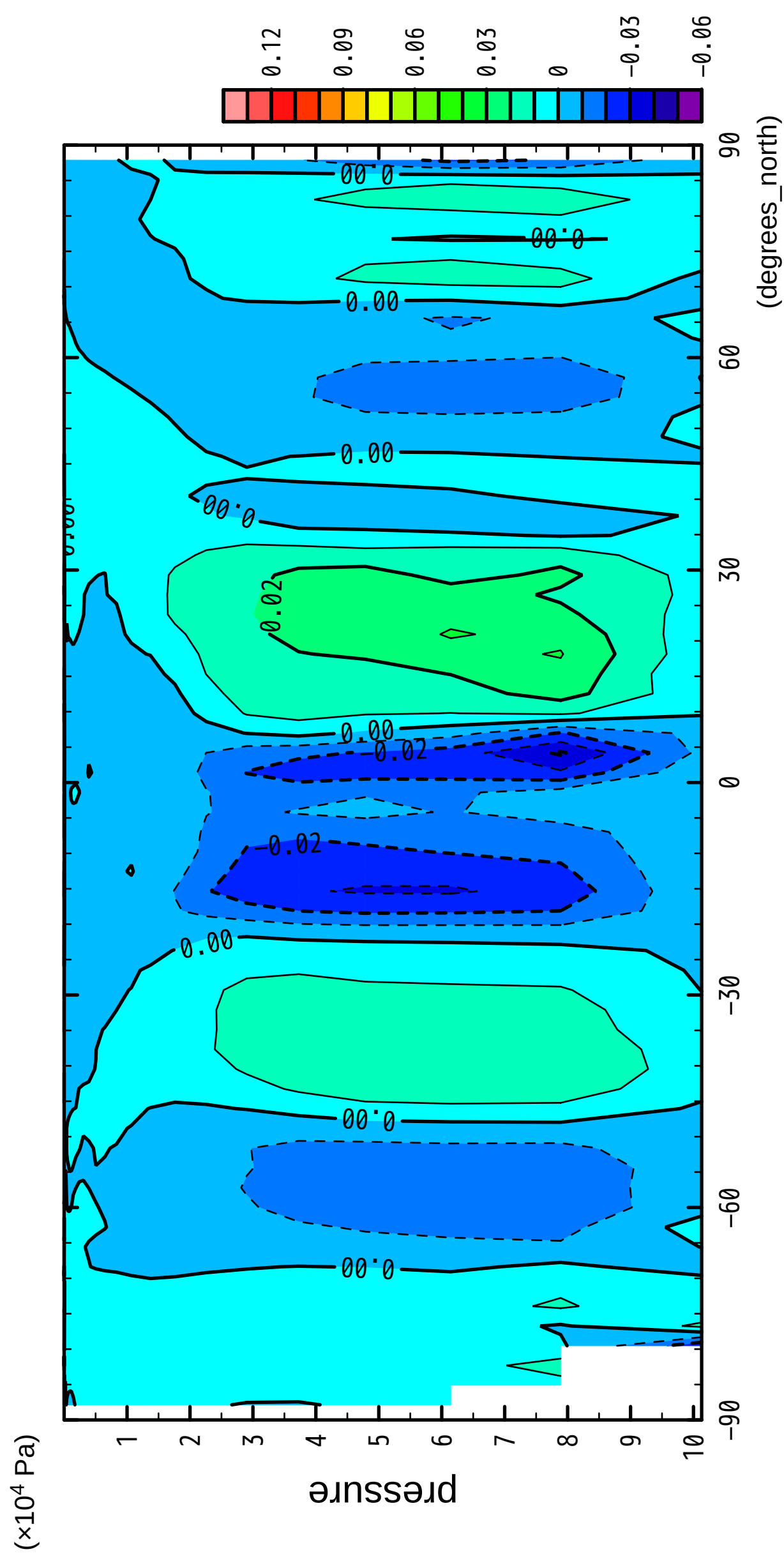
OMG

( $\times 10^4$  Pa)



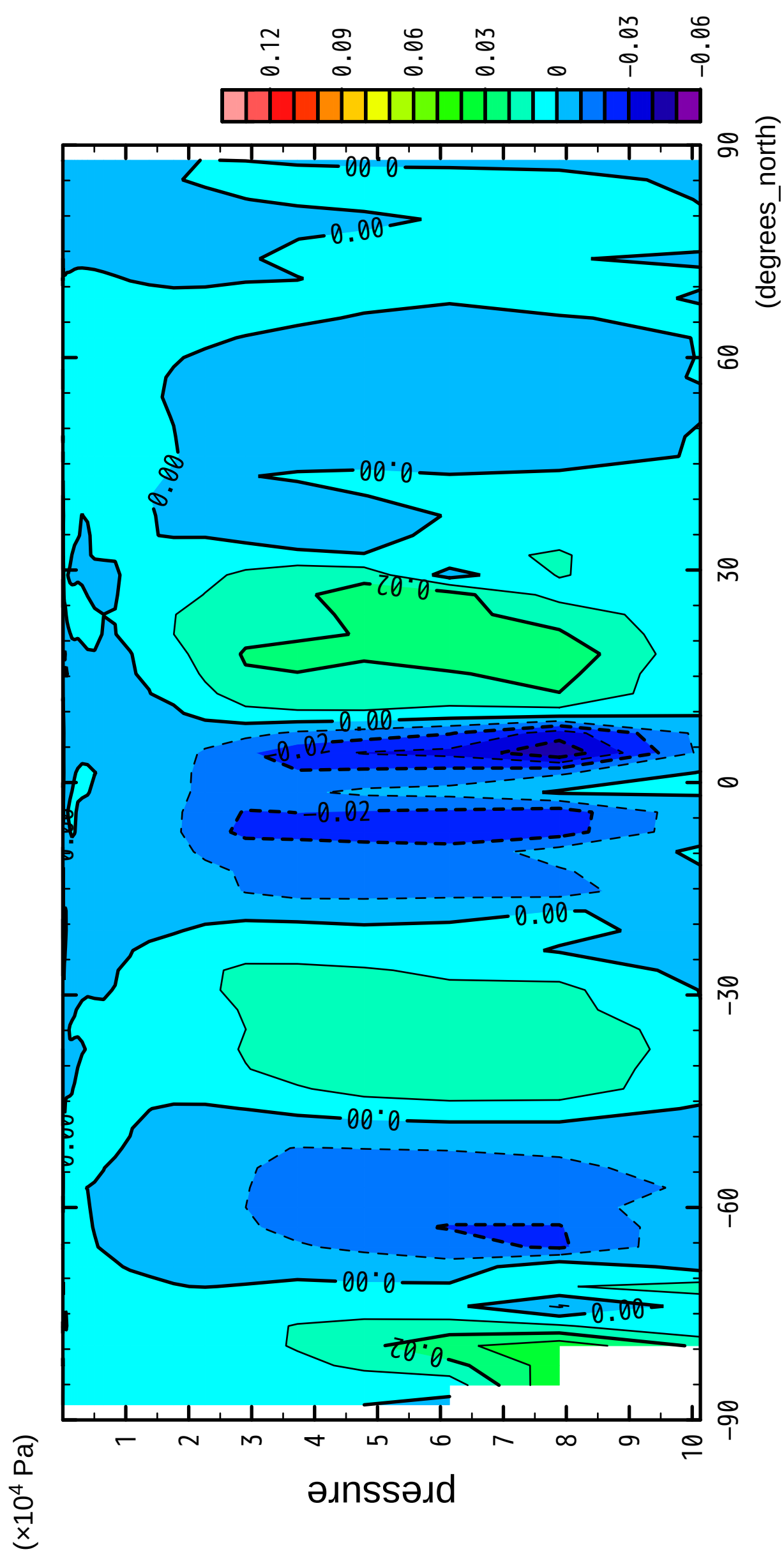
2/12

OMG



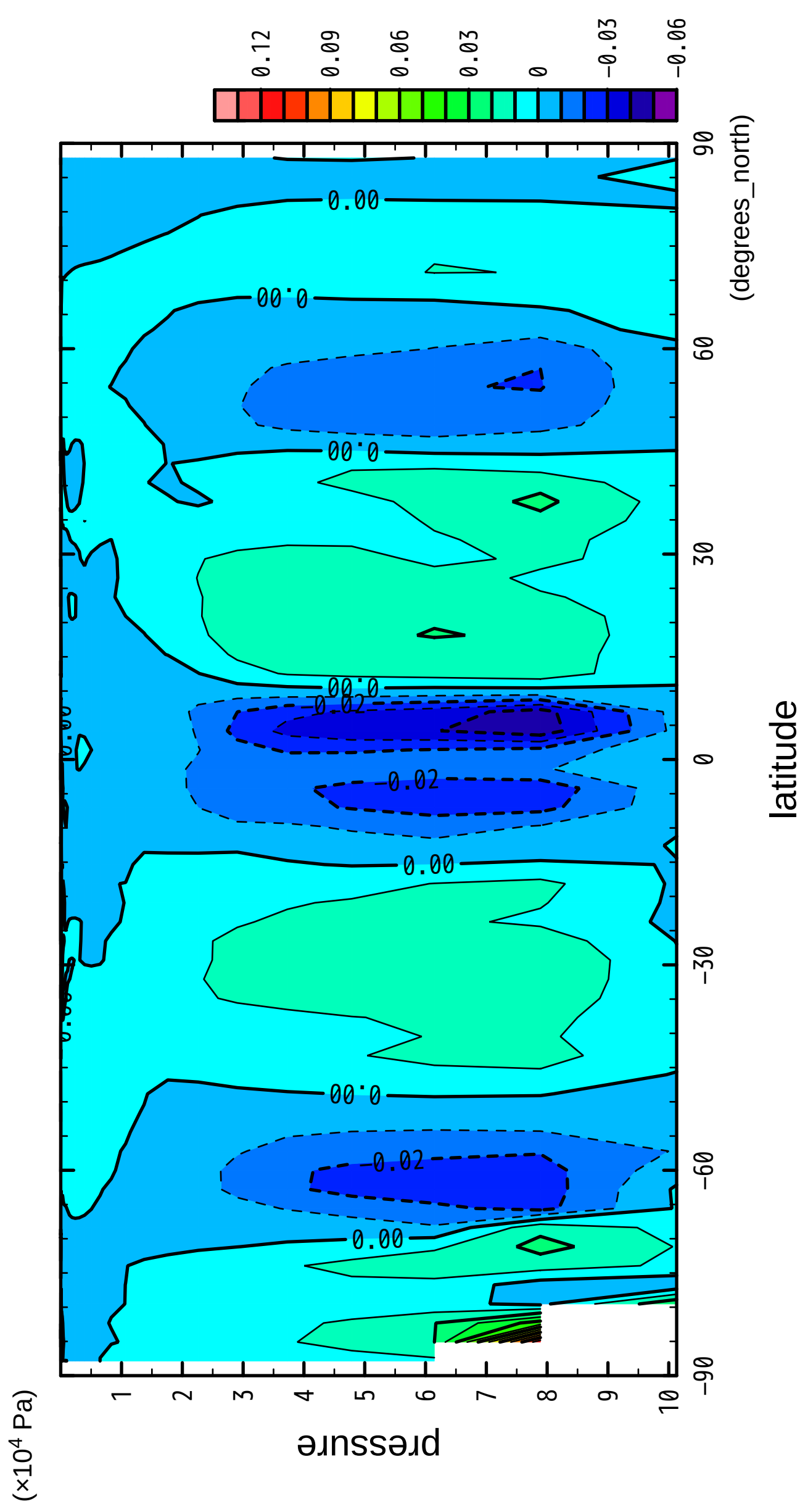
3/12

OMG



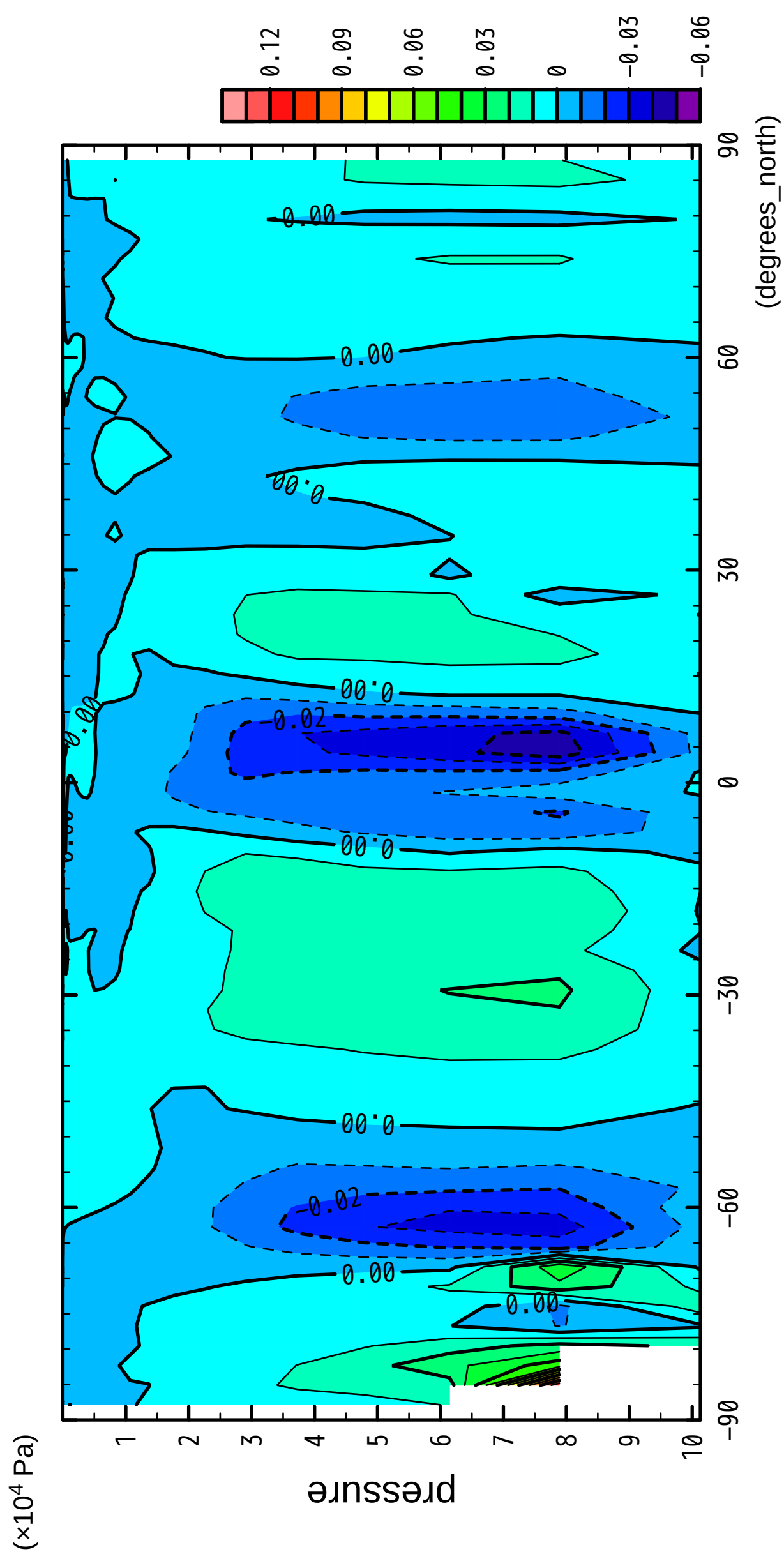
4/12

OMG



5/12

OMG



latitude

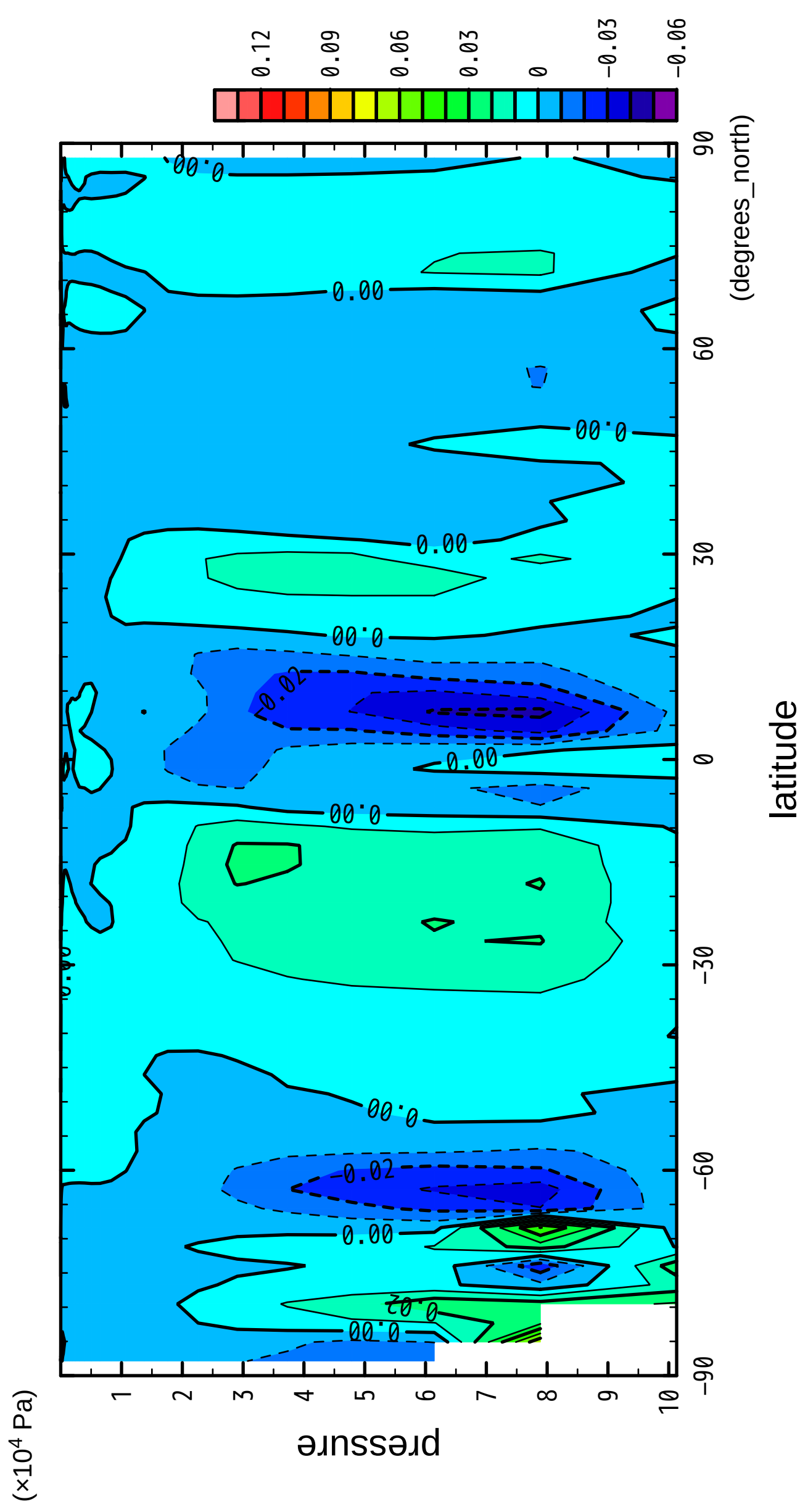
pressure

( $\times 10^4$  Pa)

(degrees\_north)

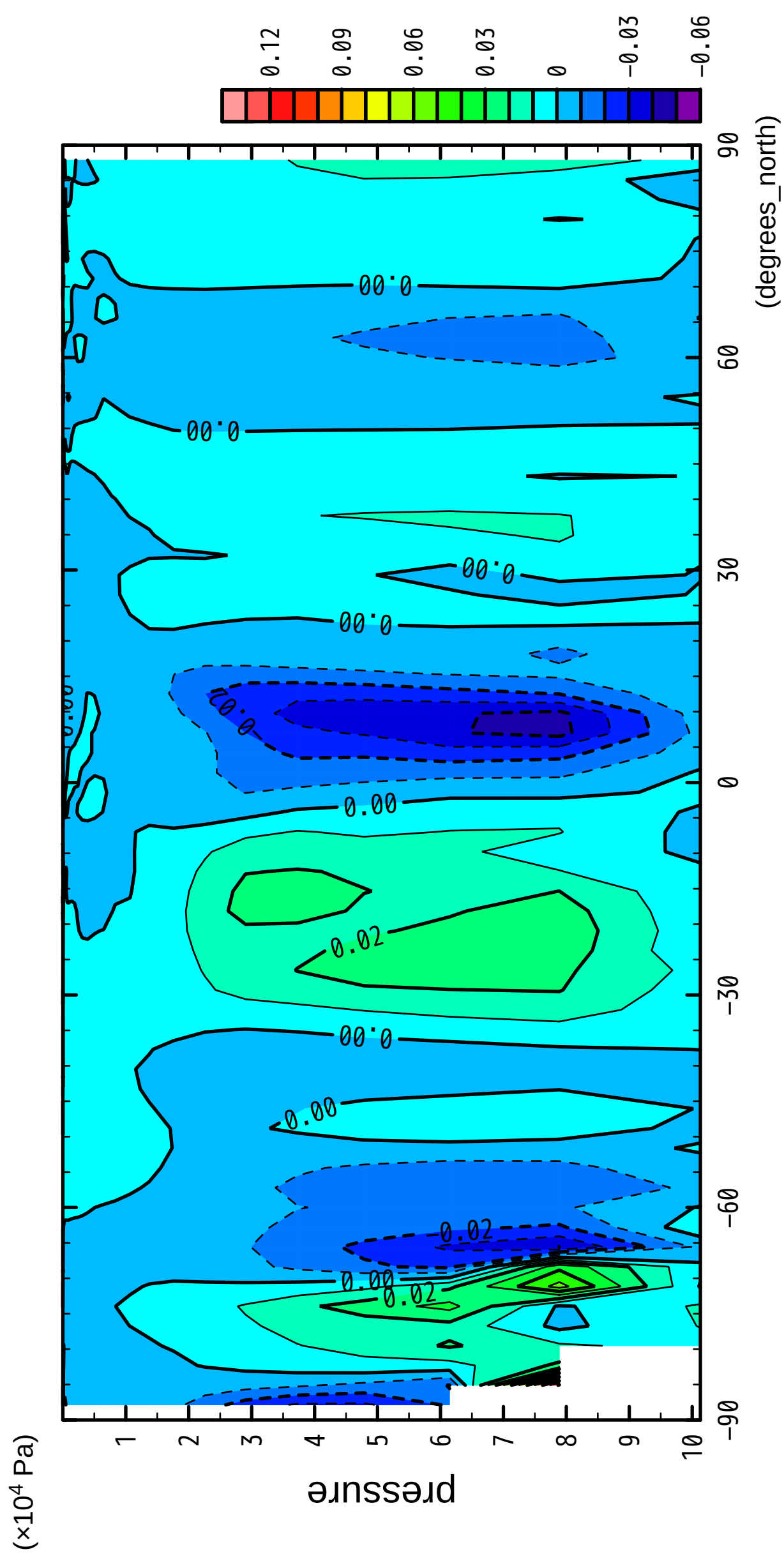
6/12

OMG



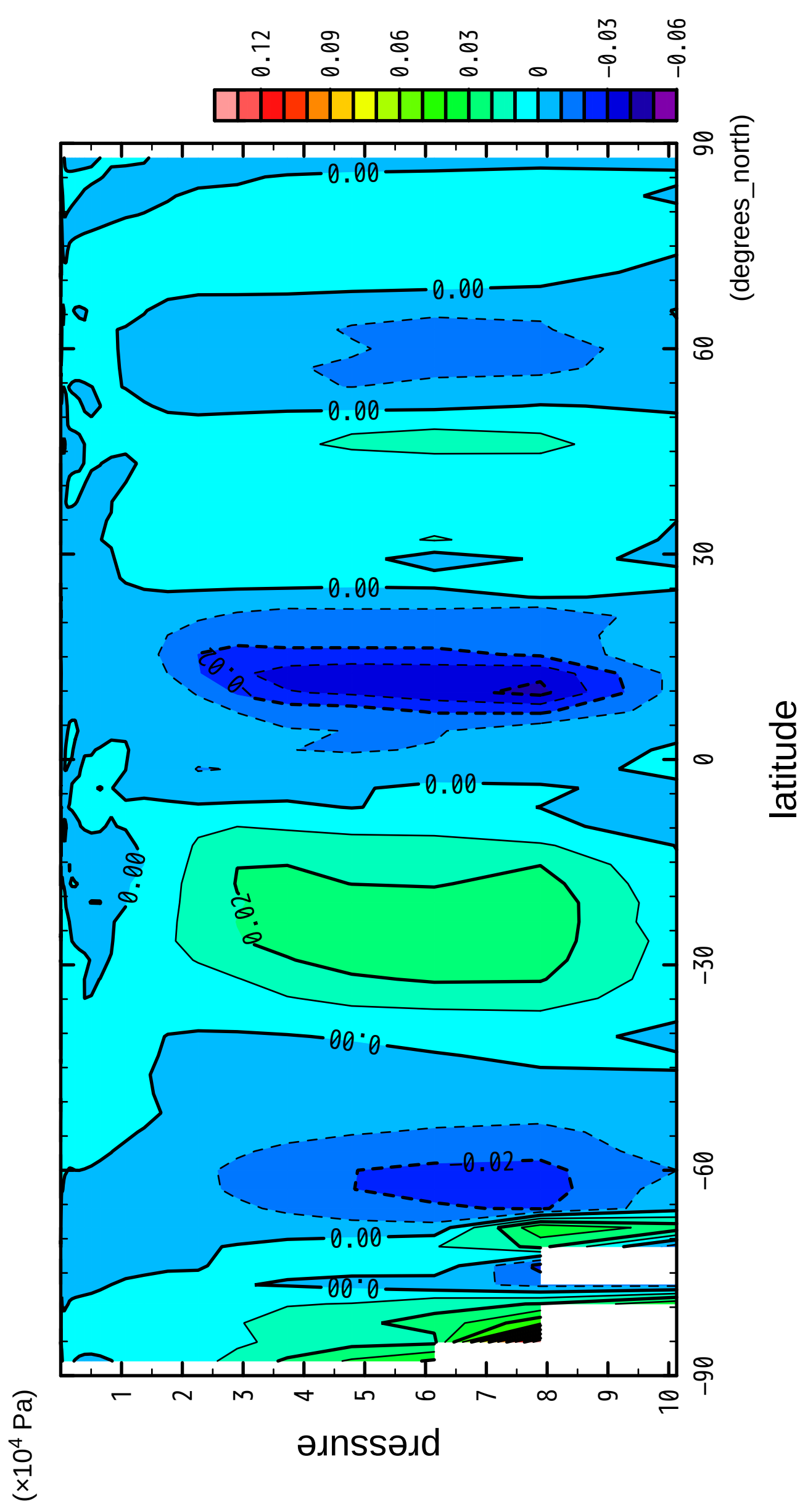
7/12

OMG



8/12

OMG

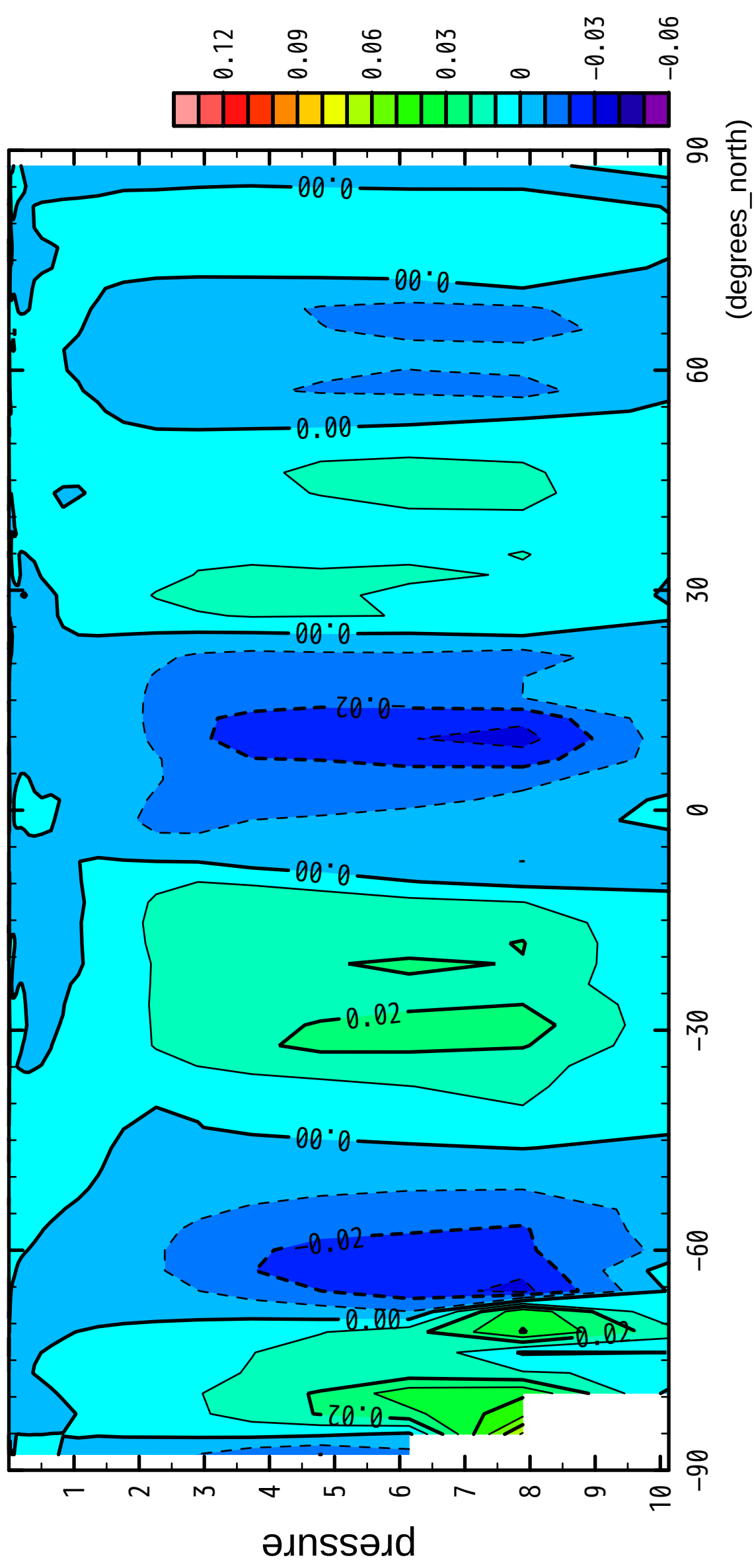




9/12

OMG

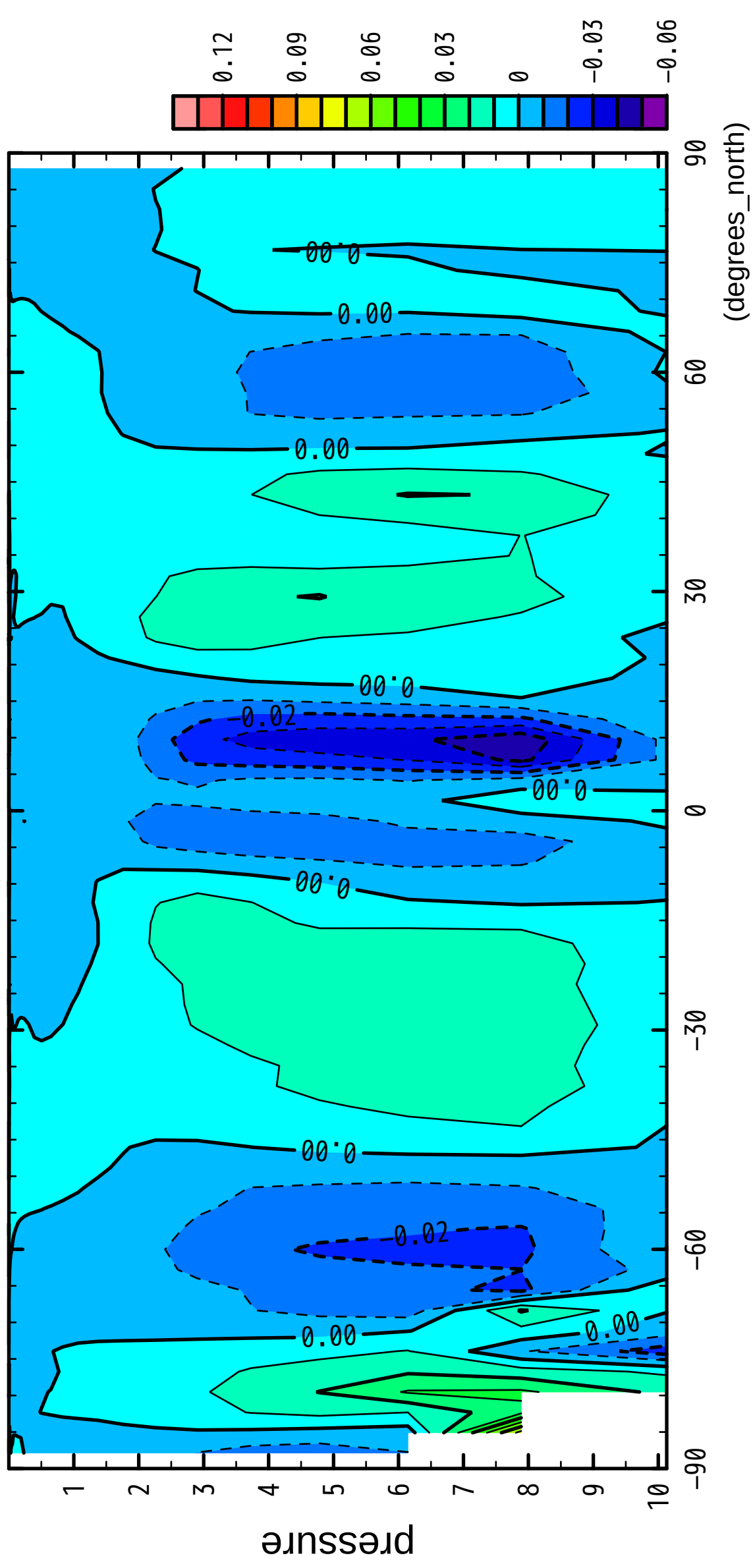
( $\times 10^4$  Pa)



10/12

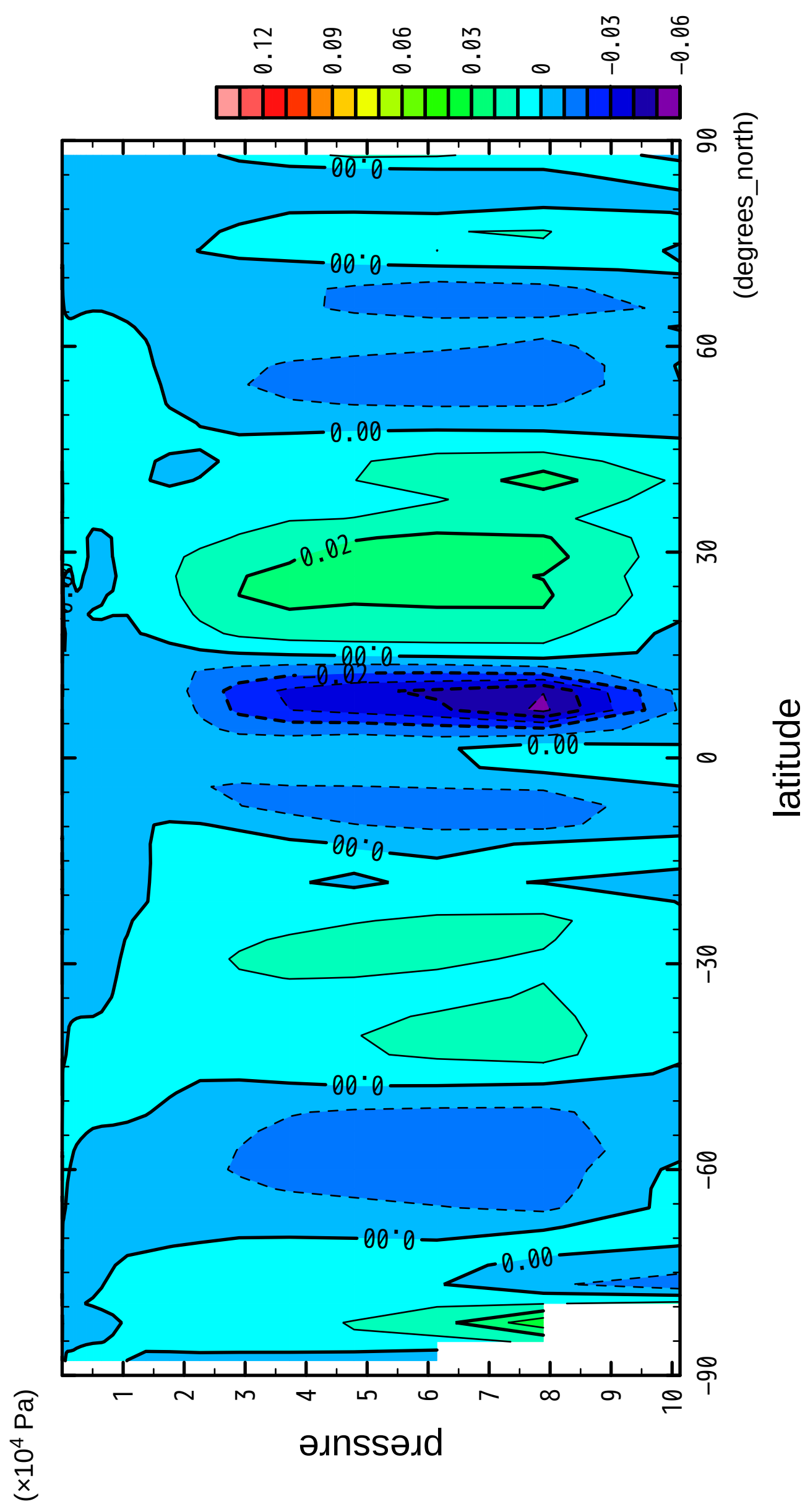
OMG

( $\times 10^4$  Pa)



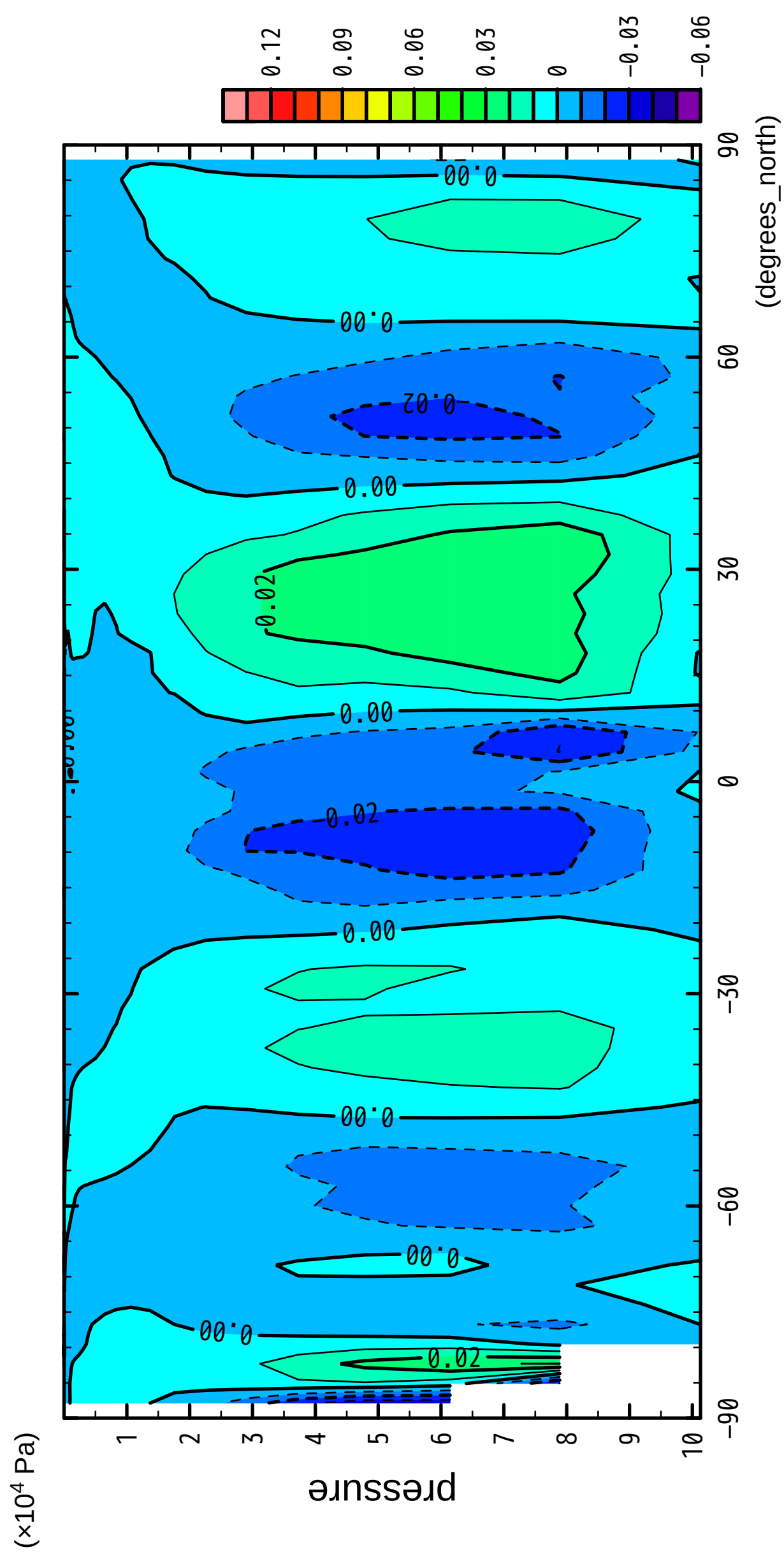
11/12

OMG



12/12

OMG



latitude

pressure

( $\times 10^4$  Pa)

-90

-60

-30

0

30

60

90

0.12

0.09

0.06

0.03

0

-0.03

-0.06