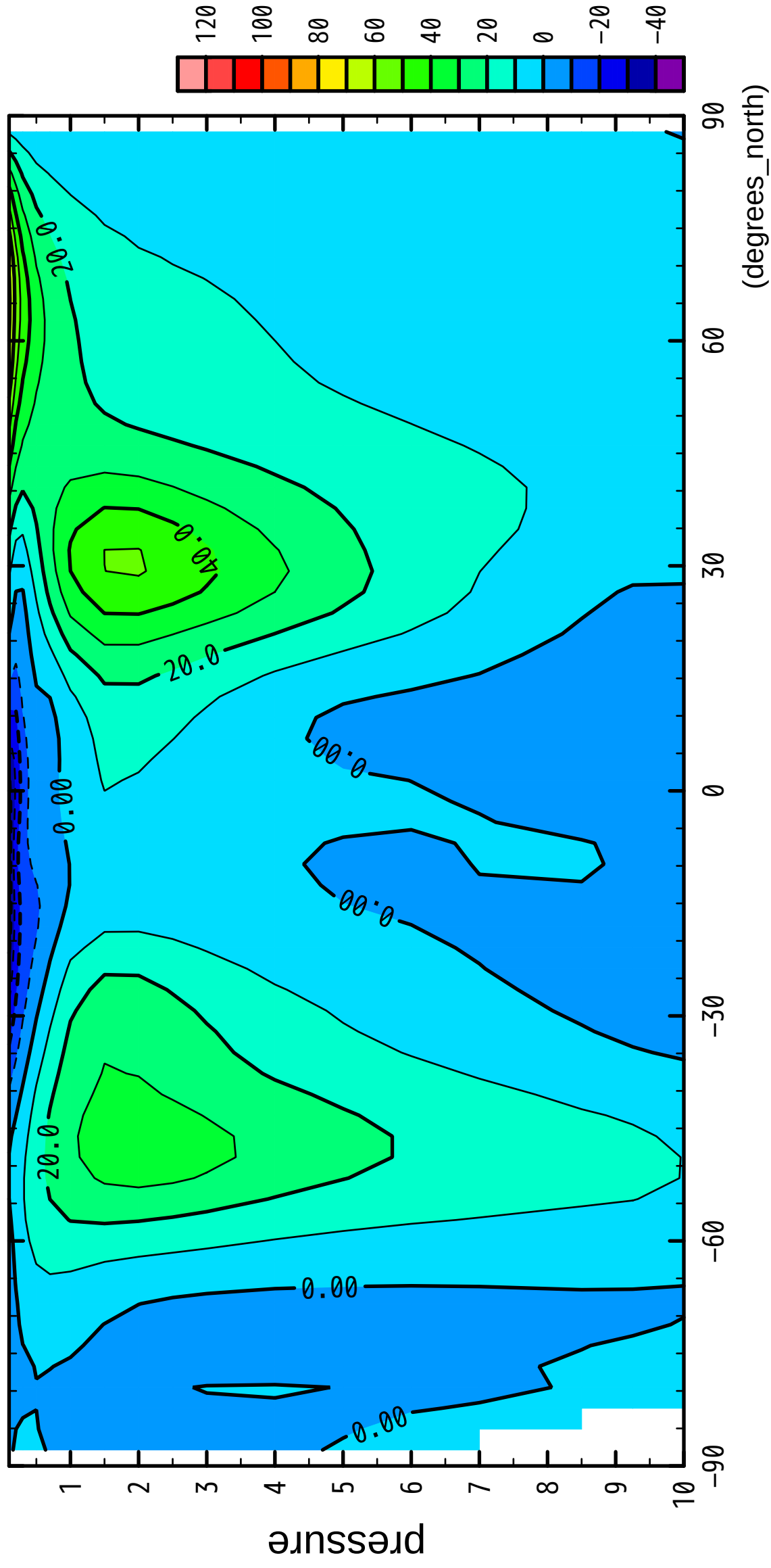


1/12

U

( $\times 10^4$  Pa)



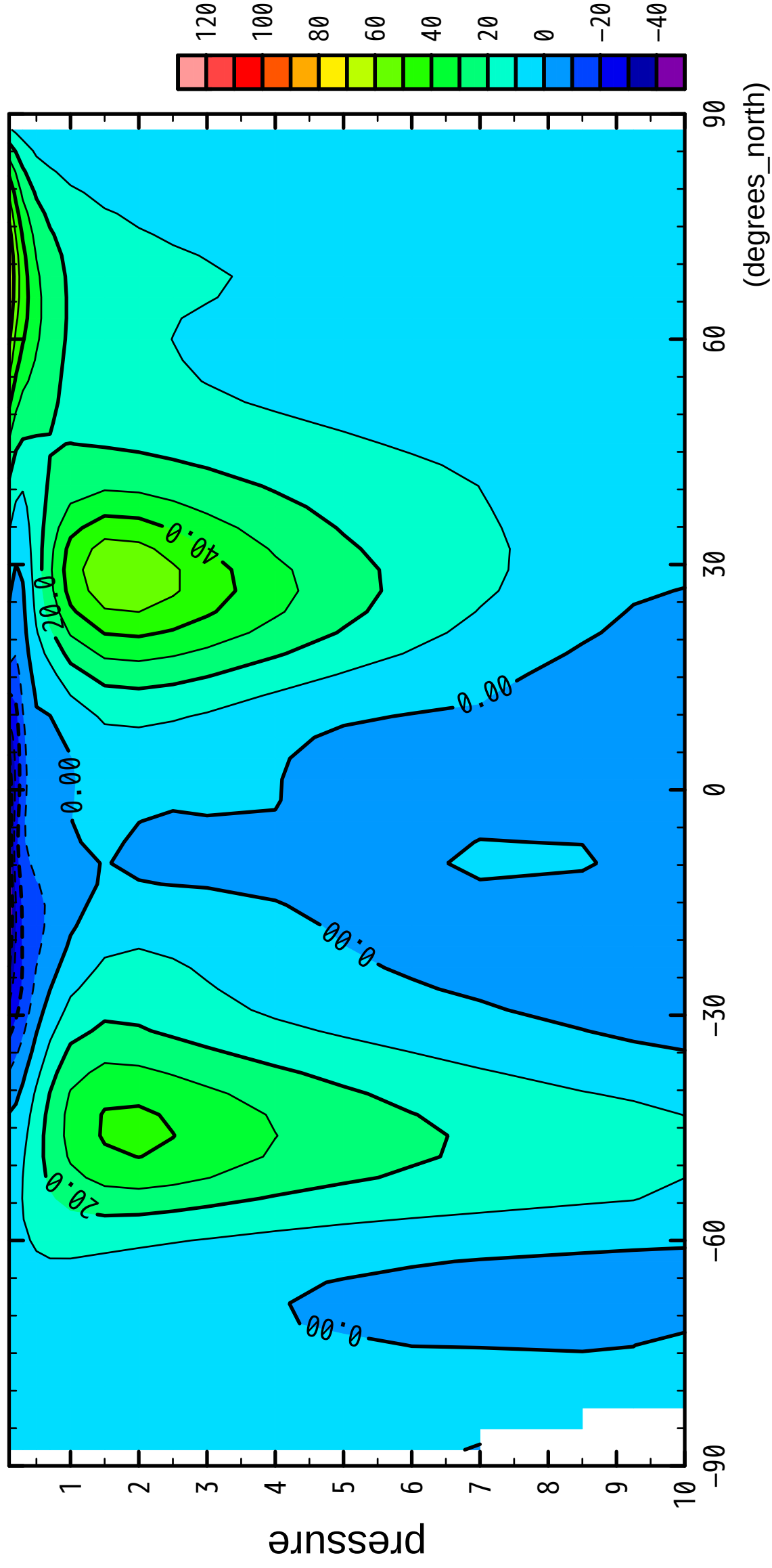
latitude

CONTOUR INTERVAL = 1.000E+01

2/12

U

( $\times 10^4$  Pa)



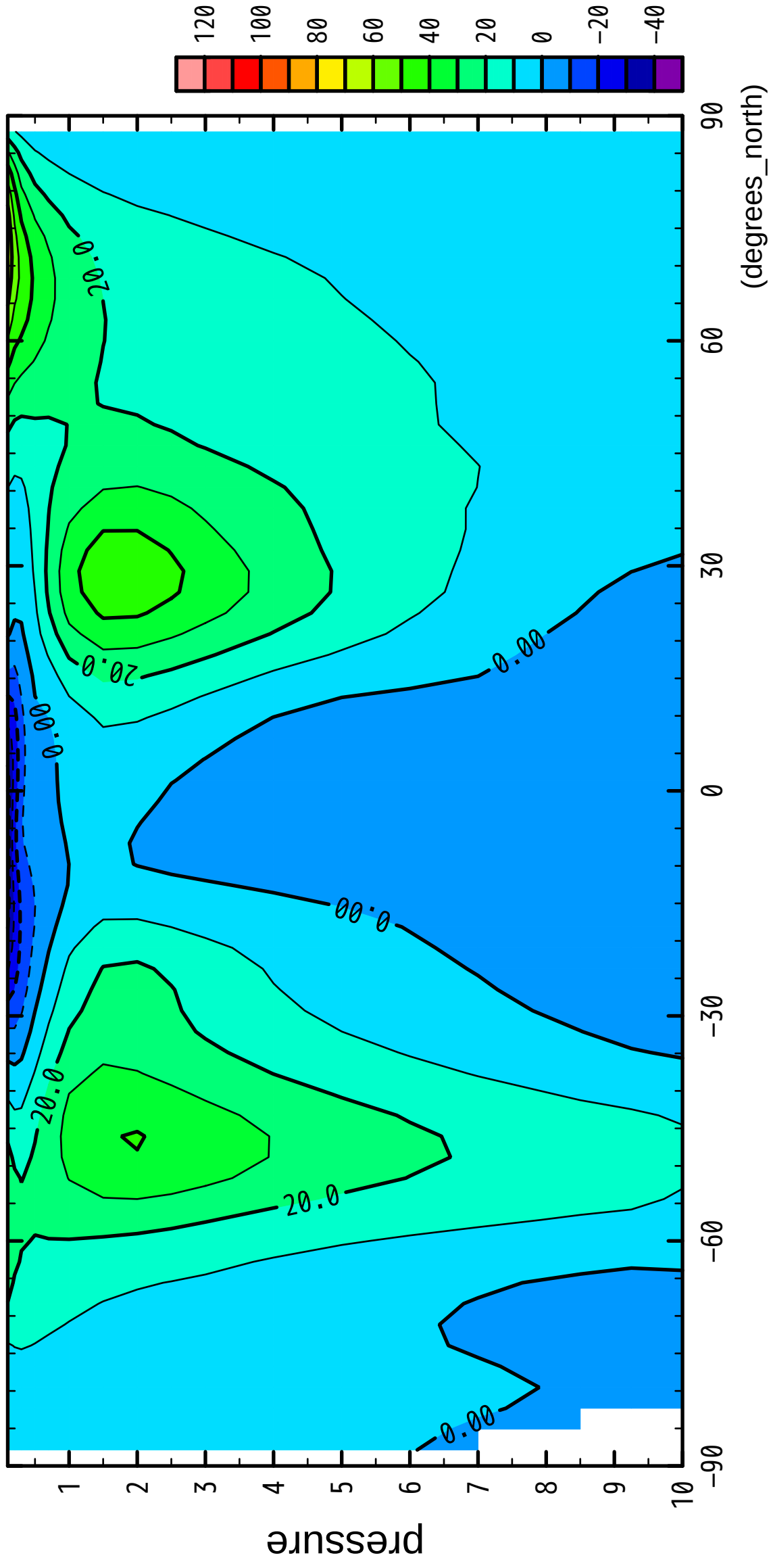
latitude

CONTOUR INTERVAL = 1.000E+01

3/12

U

( $\times 10^4$  Pa)



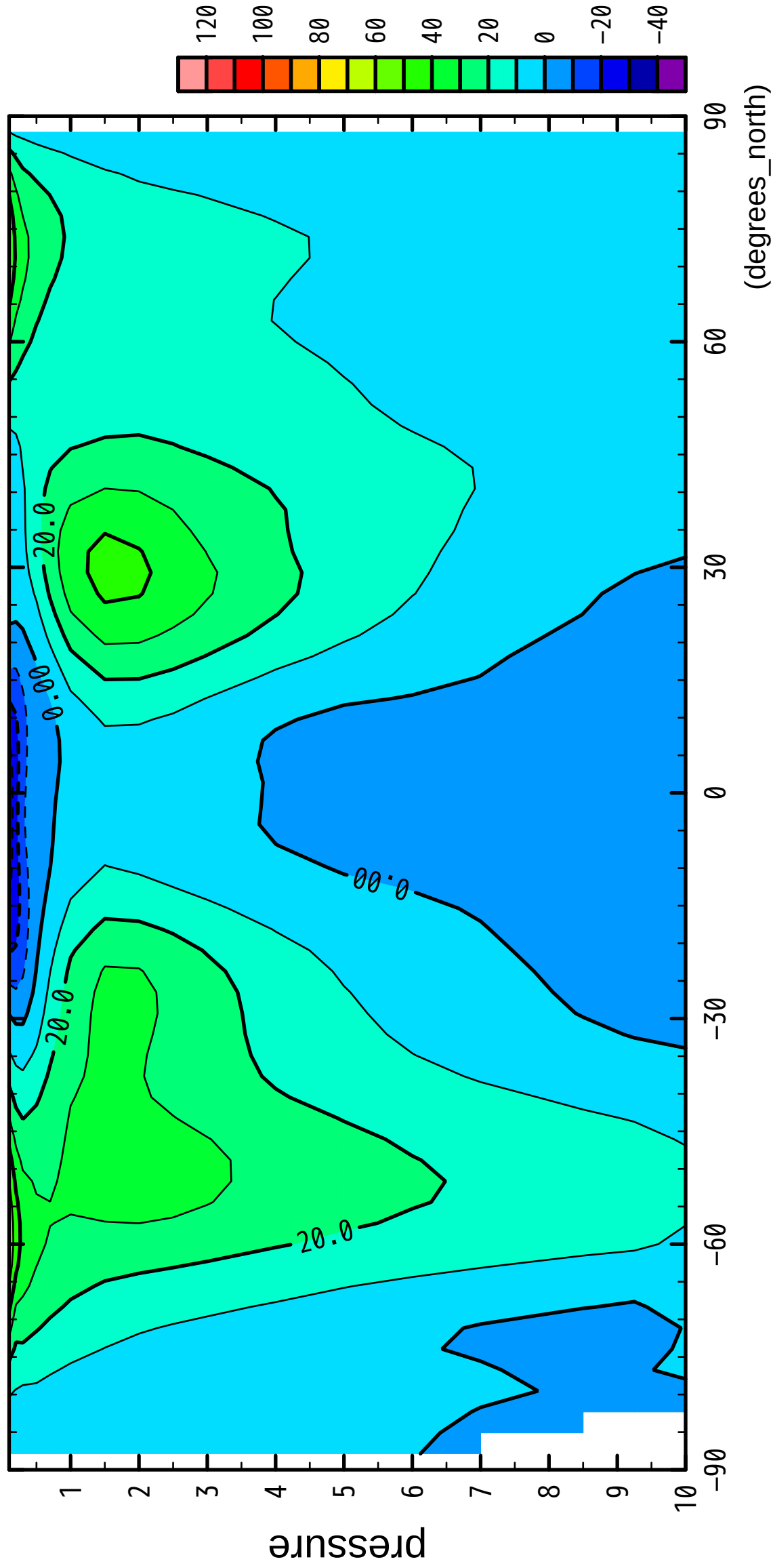
latitude

CONTOUR INTERVAL = 1.000E+01

4/12

U

( $\times 10^4$  Pa)



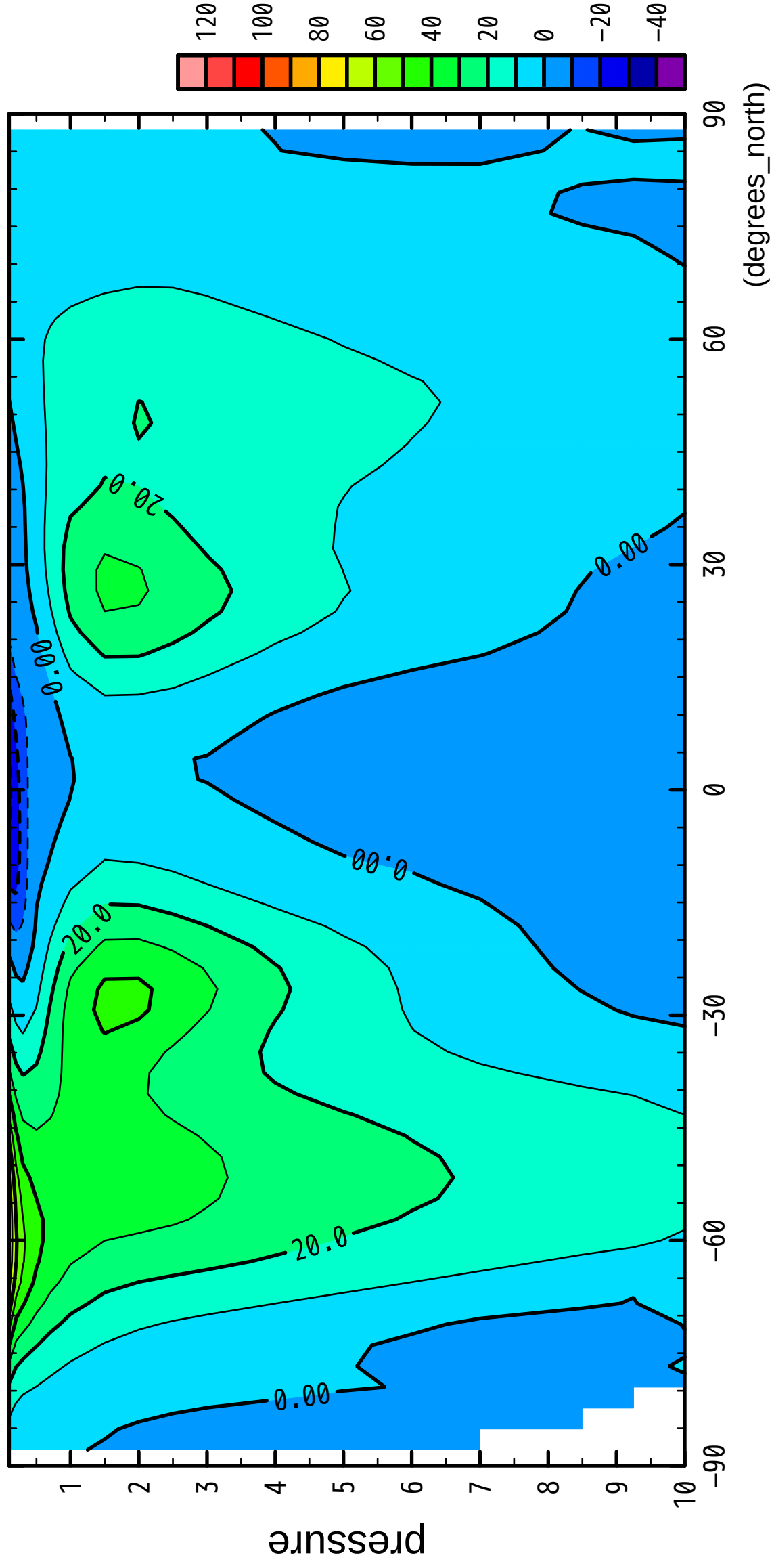
latitude

CONTOUR INTERVAL = 1.000E+01

5/12

U

( $\times 10^4$  Pa)



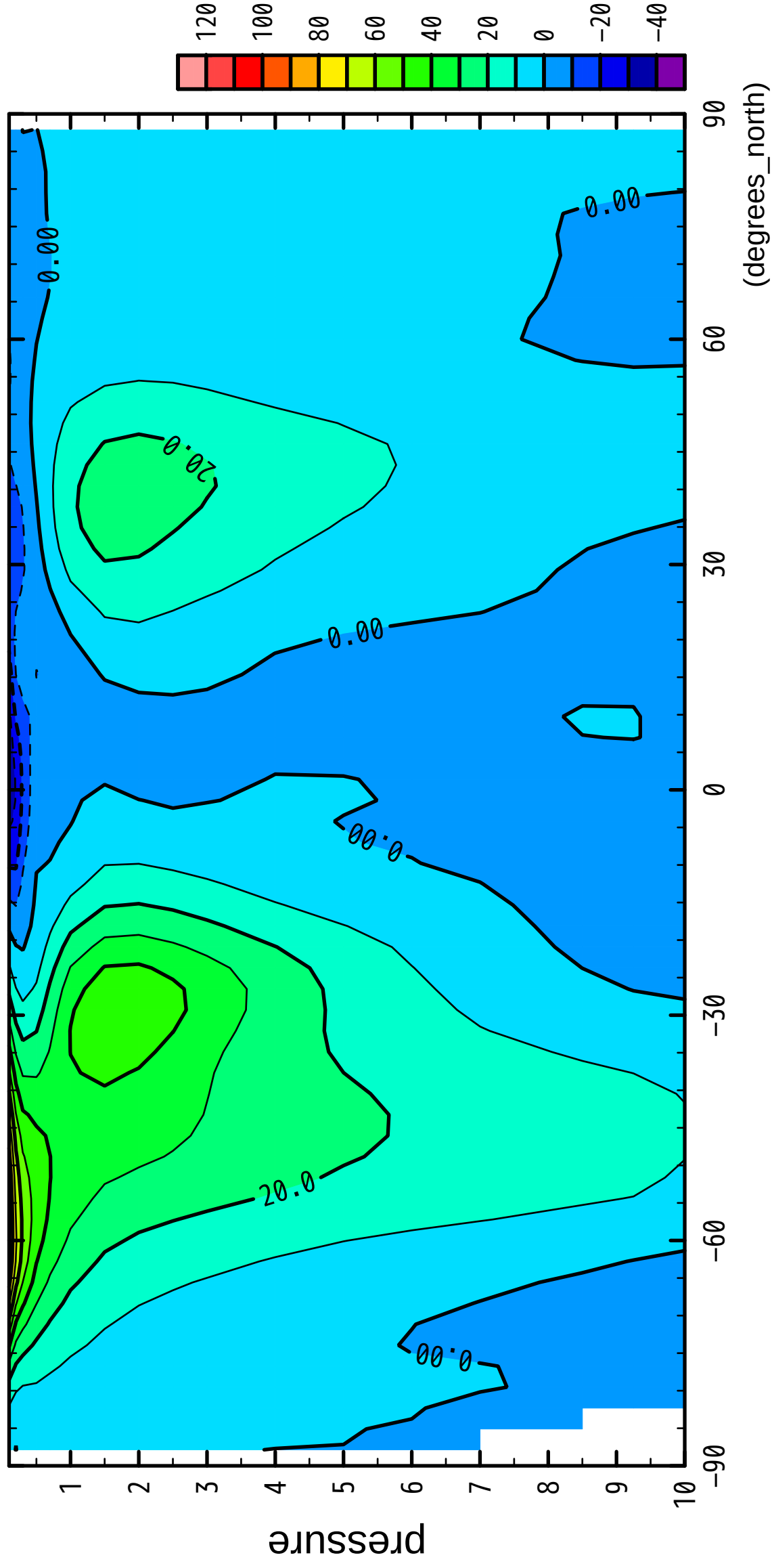
latitude

CONTOUR INTERVAL = 1.000E+01

6/12

U

( $\times 10^4$  Pa)



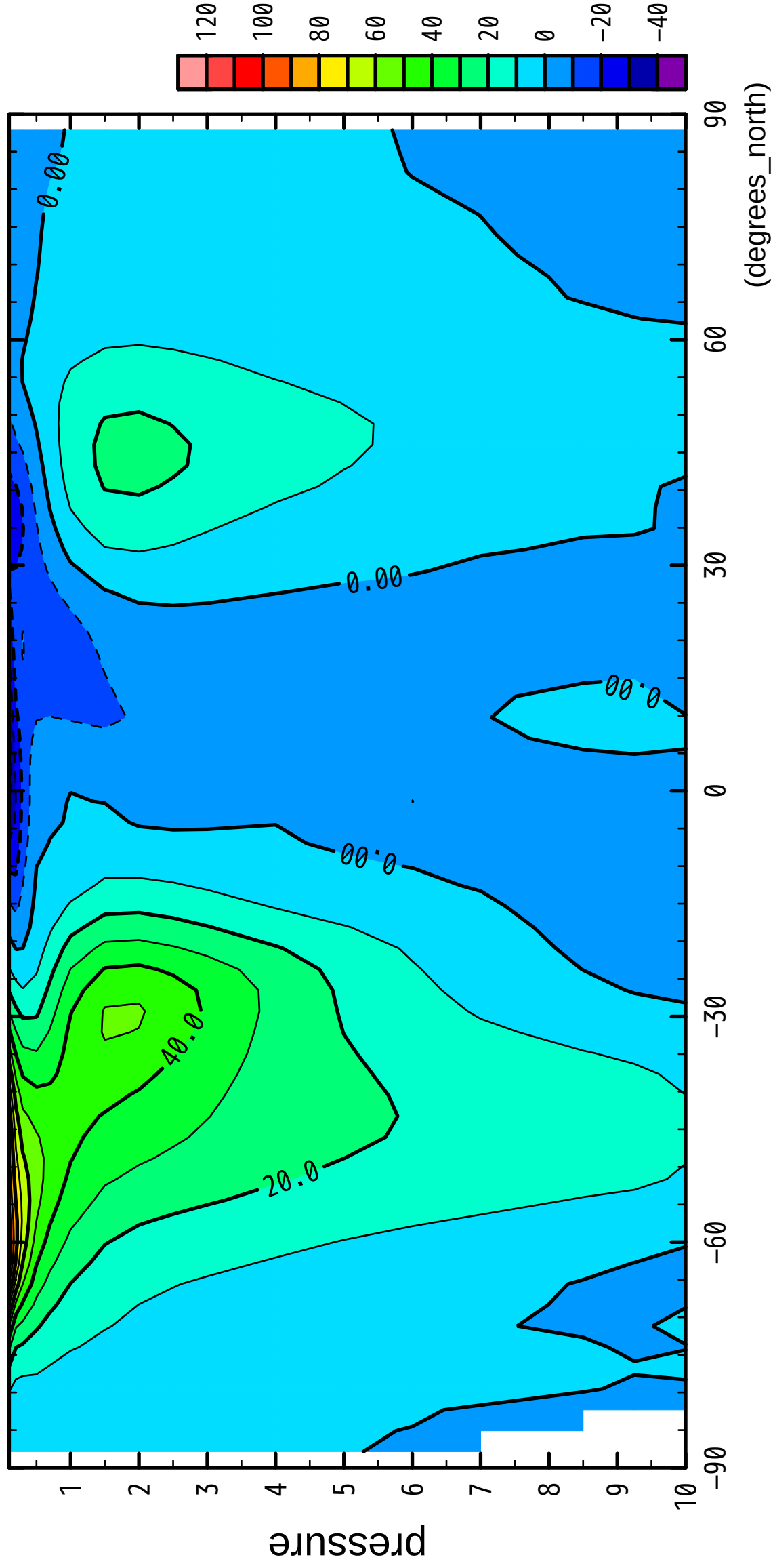
latitude

CONTOUR INTERVAL = 1.000E+01

7/12

U

( $\times 10^4$  Pa)

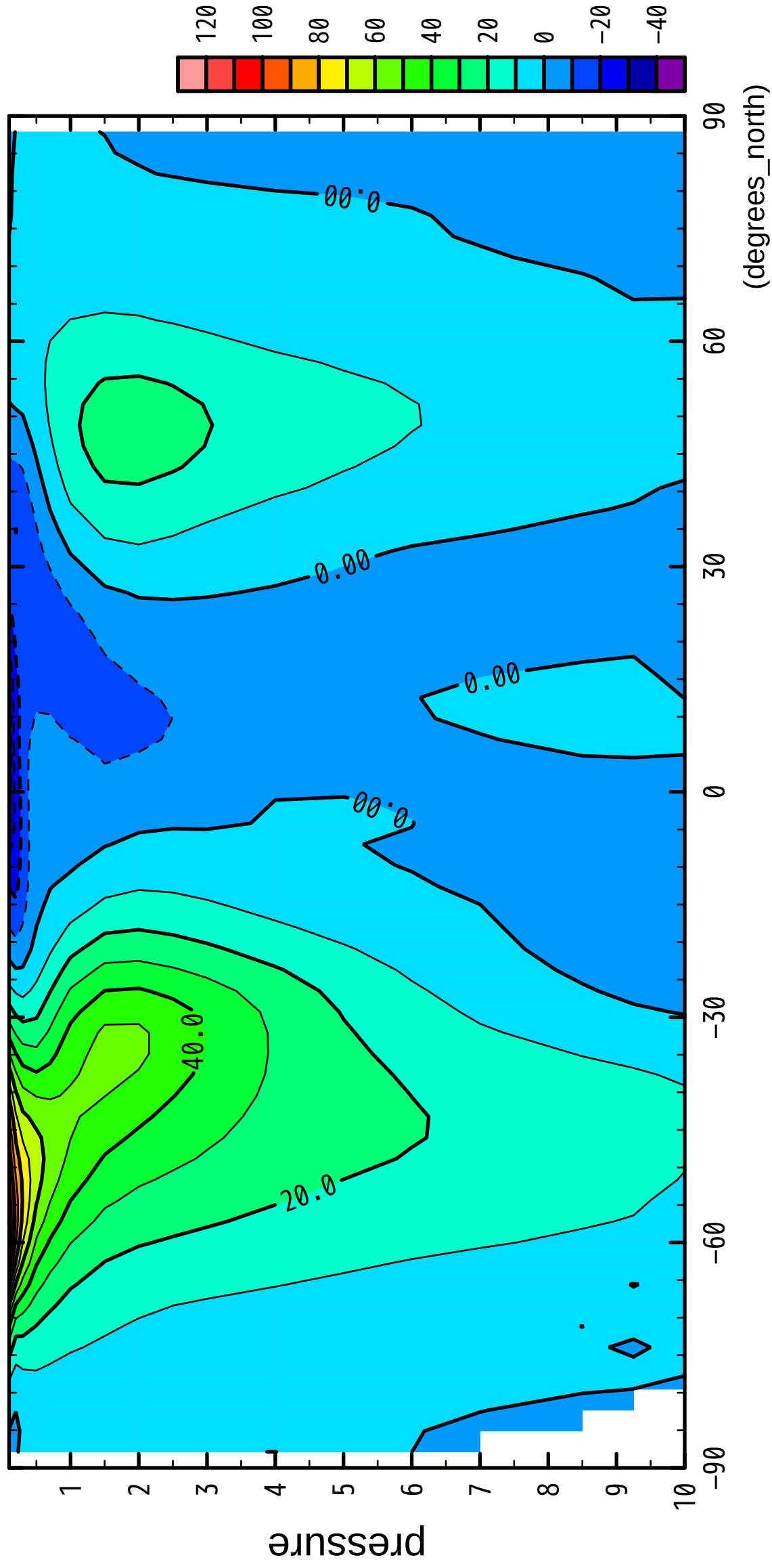


CONTOUR INTERVAL = 1.000E+01

8/12

U

( $\times 10^4$  Pa)



latitude

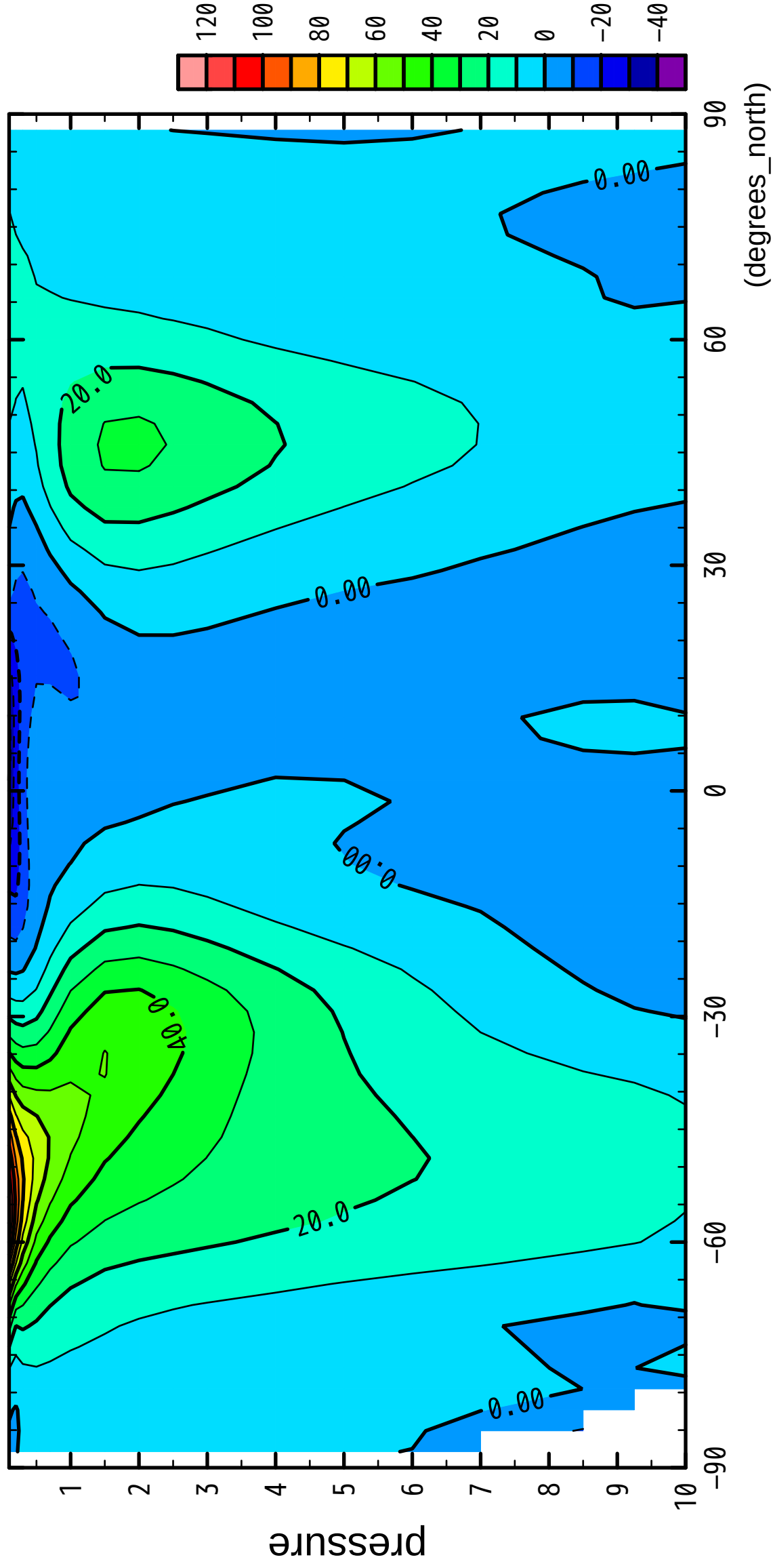
CONTOUR INTERVAL = 1.000E+01



9/12

U

( $\times 10^4$  Pa)



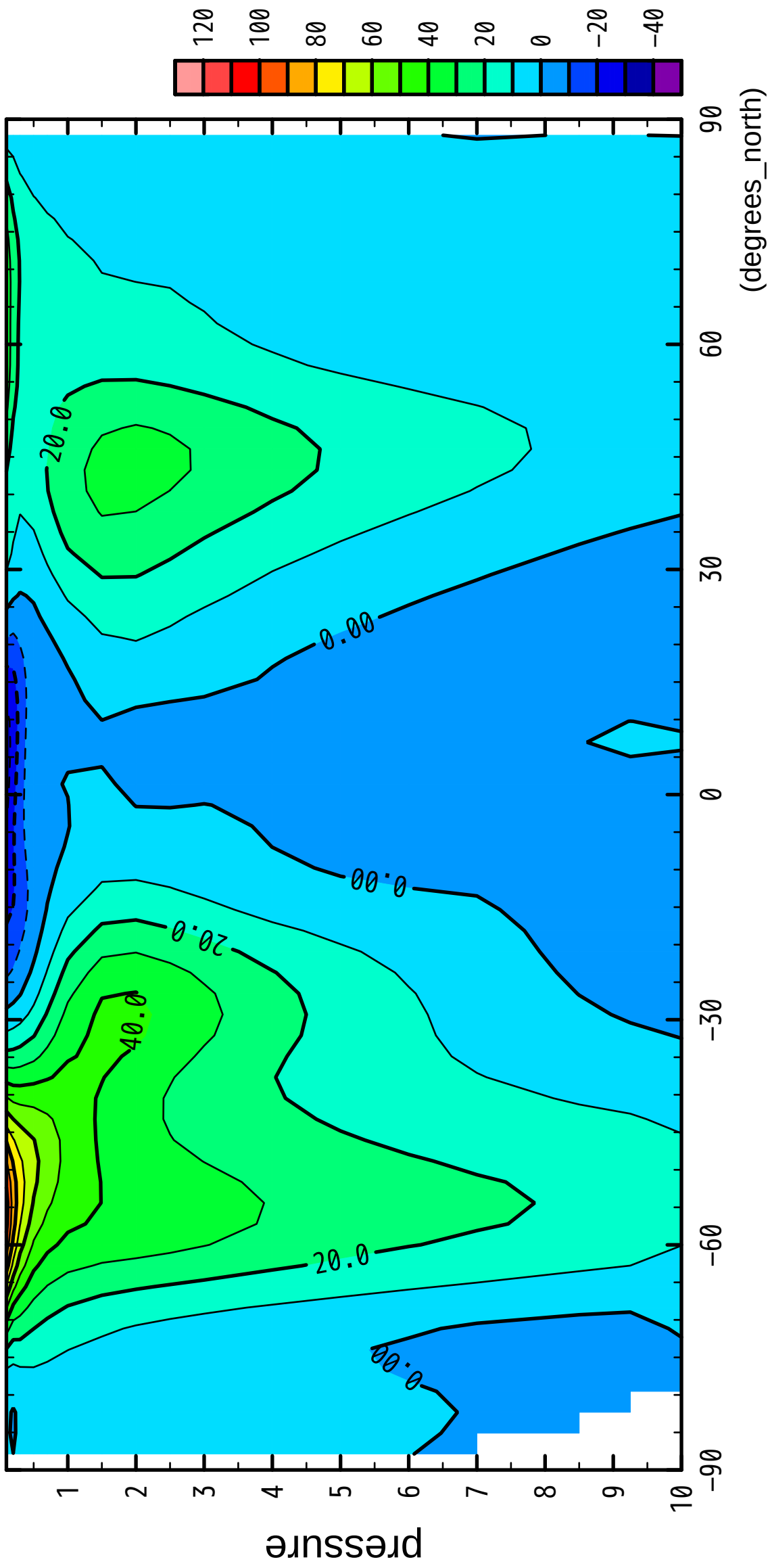
latitude

CONTOUR INTERVAL = 1.000E+01

10/12

U

( $\times 10^4$  Pa)



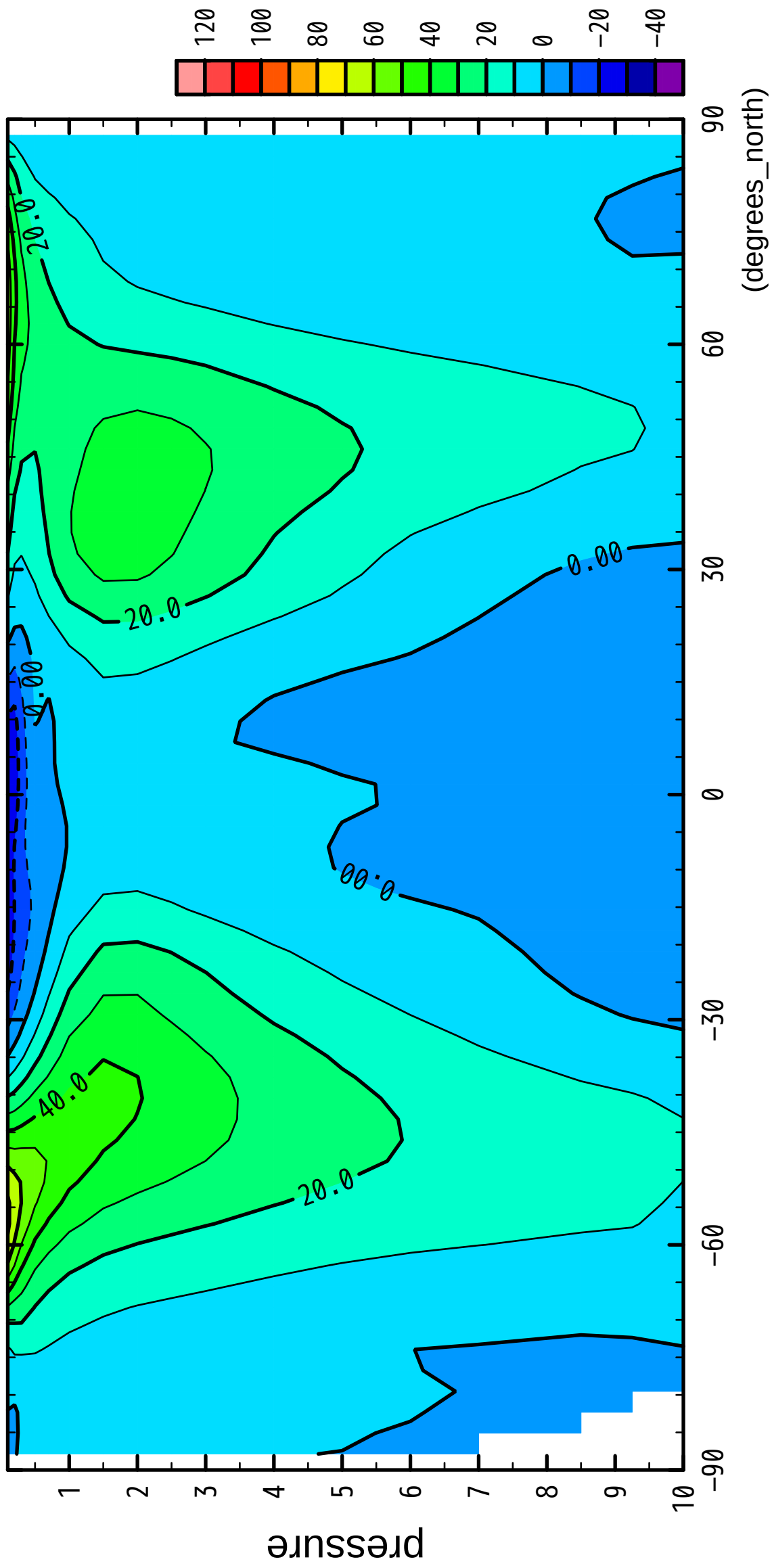
latitude

CONTOUR INTERVAL = 1.000E+01

11/12

U

( $\times 10^4$  Pa)



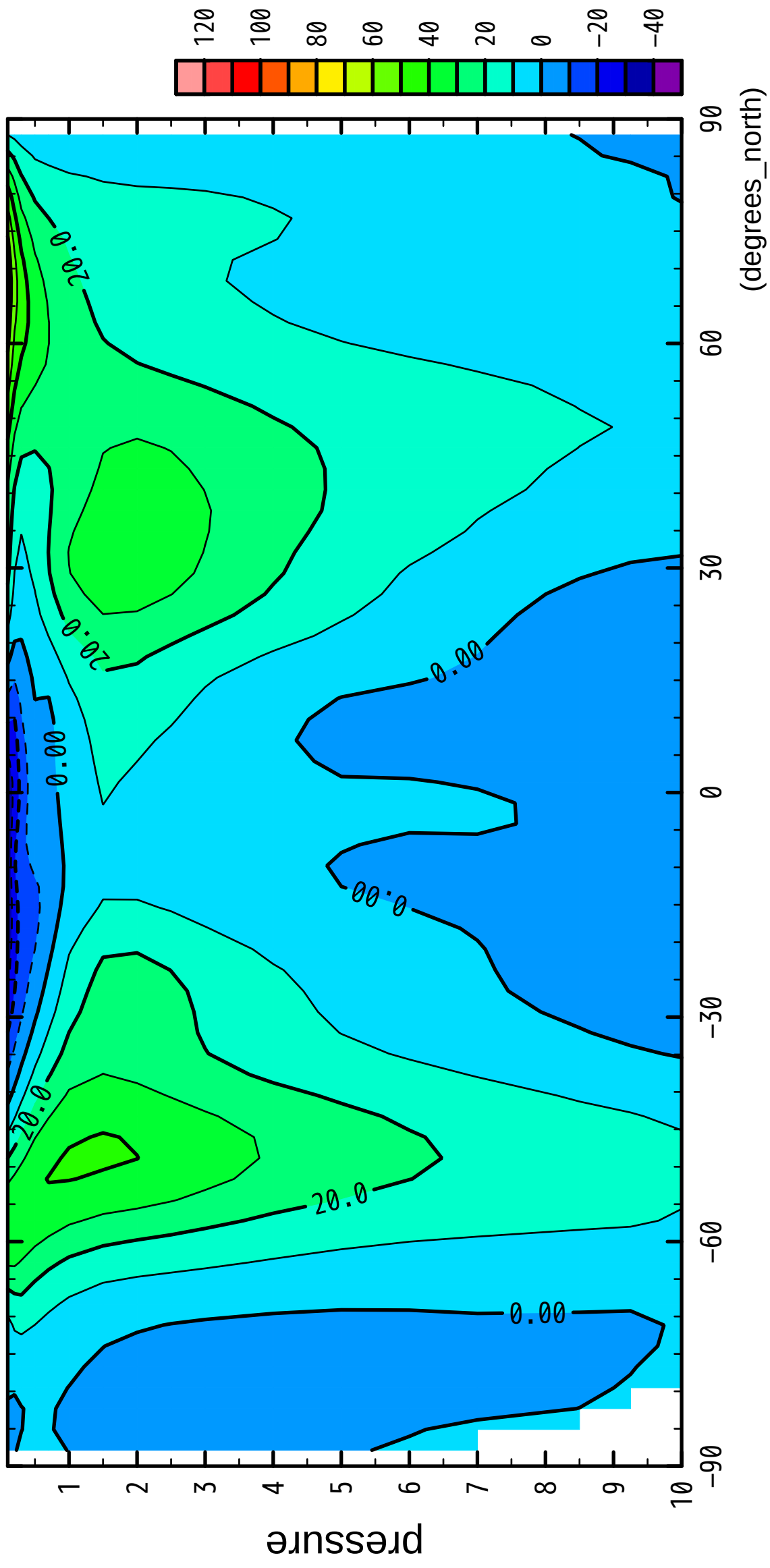
latitude

CONTOUR INTERVAL = 1.000E+01

12/12

U

( $\times 10^4$  Pa)



latitude

CONTOUR INTERVAL = 1.000E+01