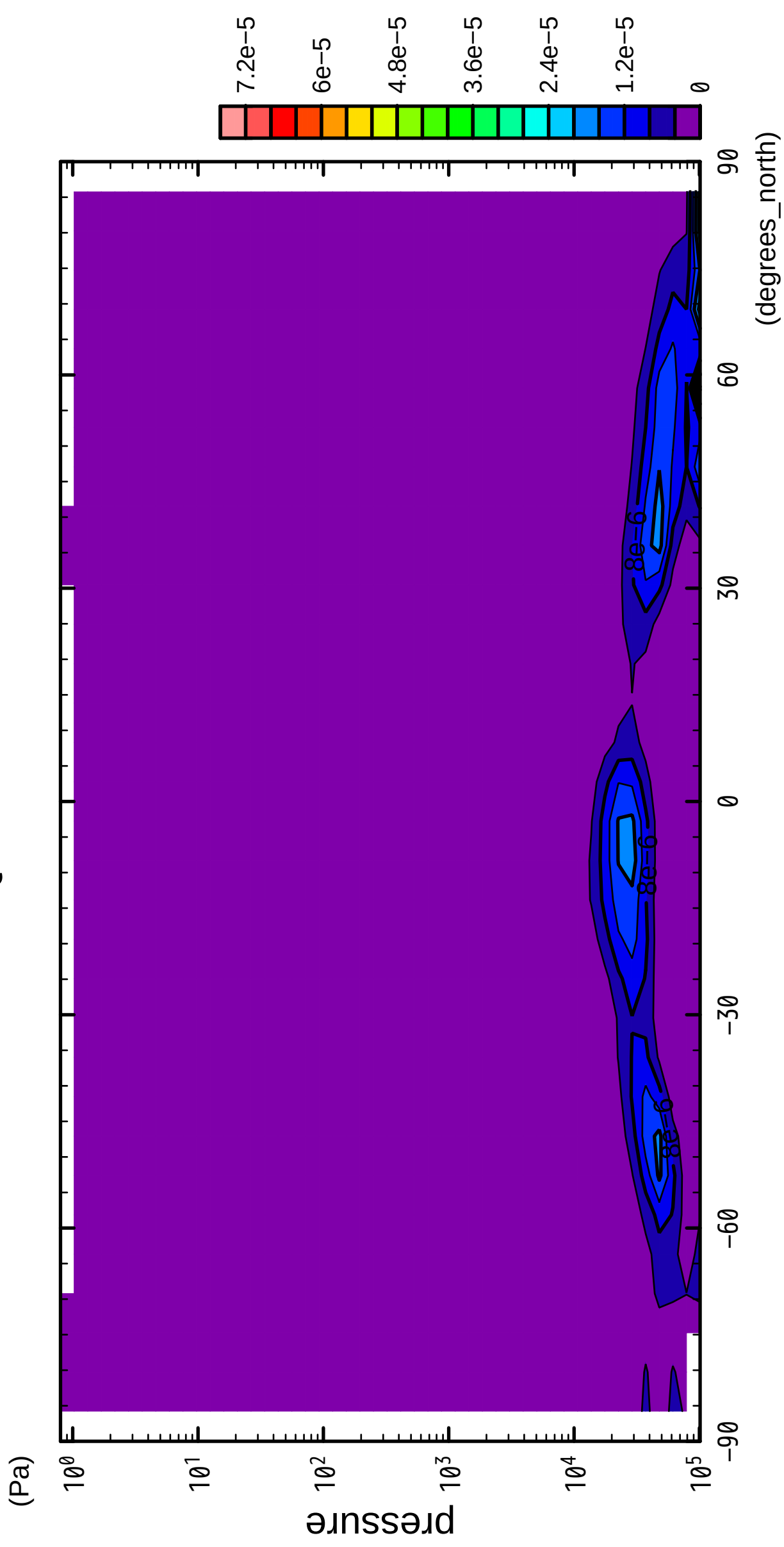


1/12

QH2OSol

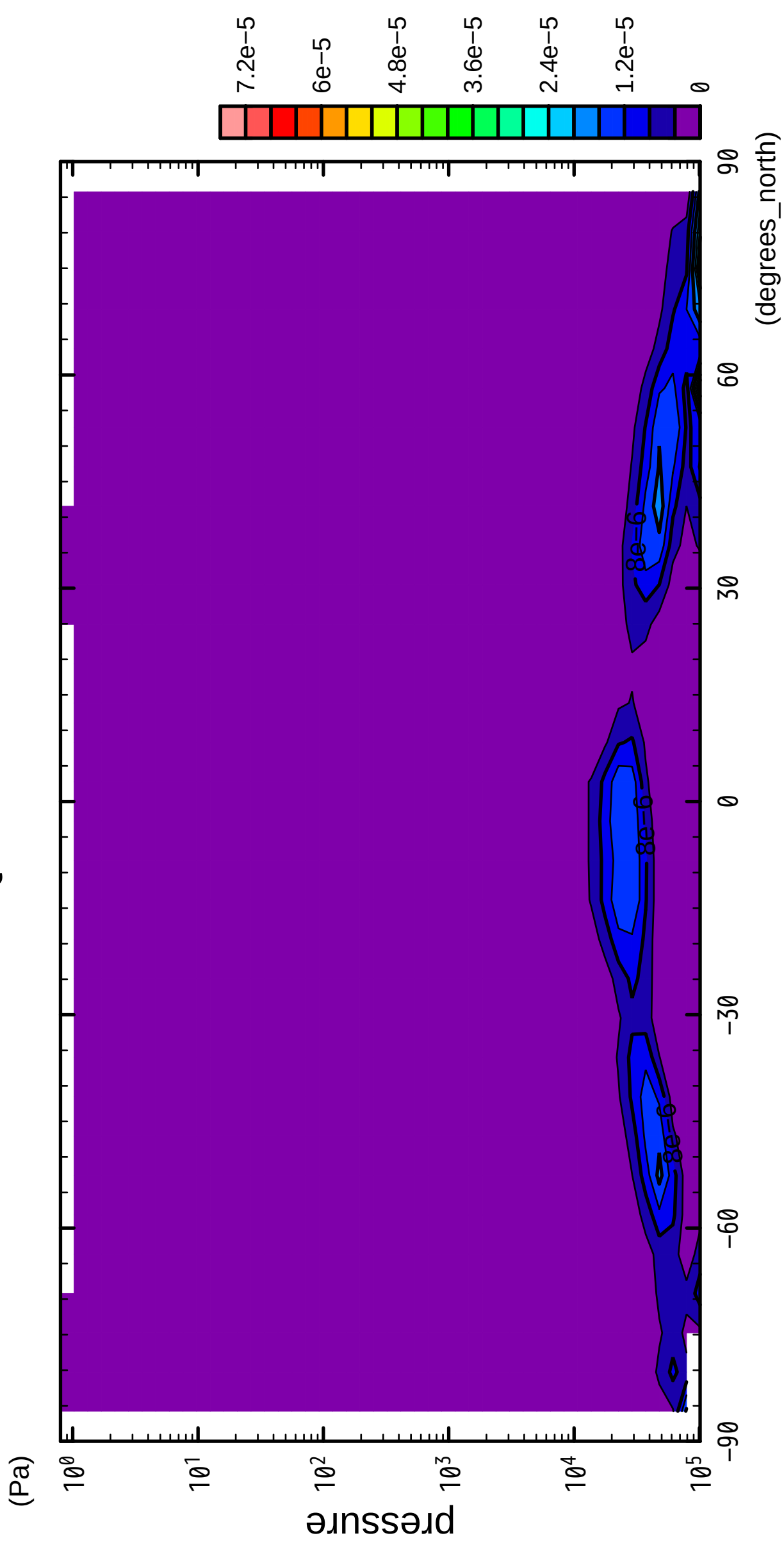


latitude

CONTOUR INTERVAL =  $4.000 \times 10^{-6}$

2/12

# QH2OSol

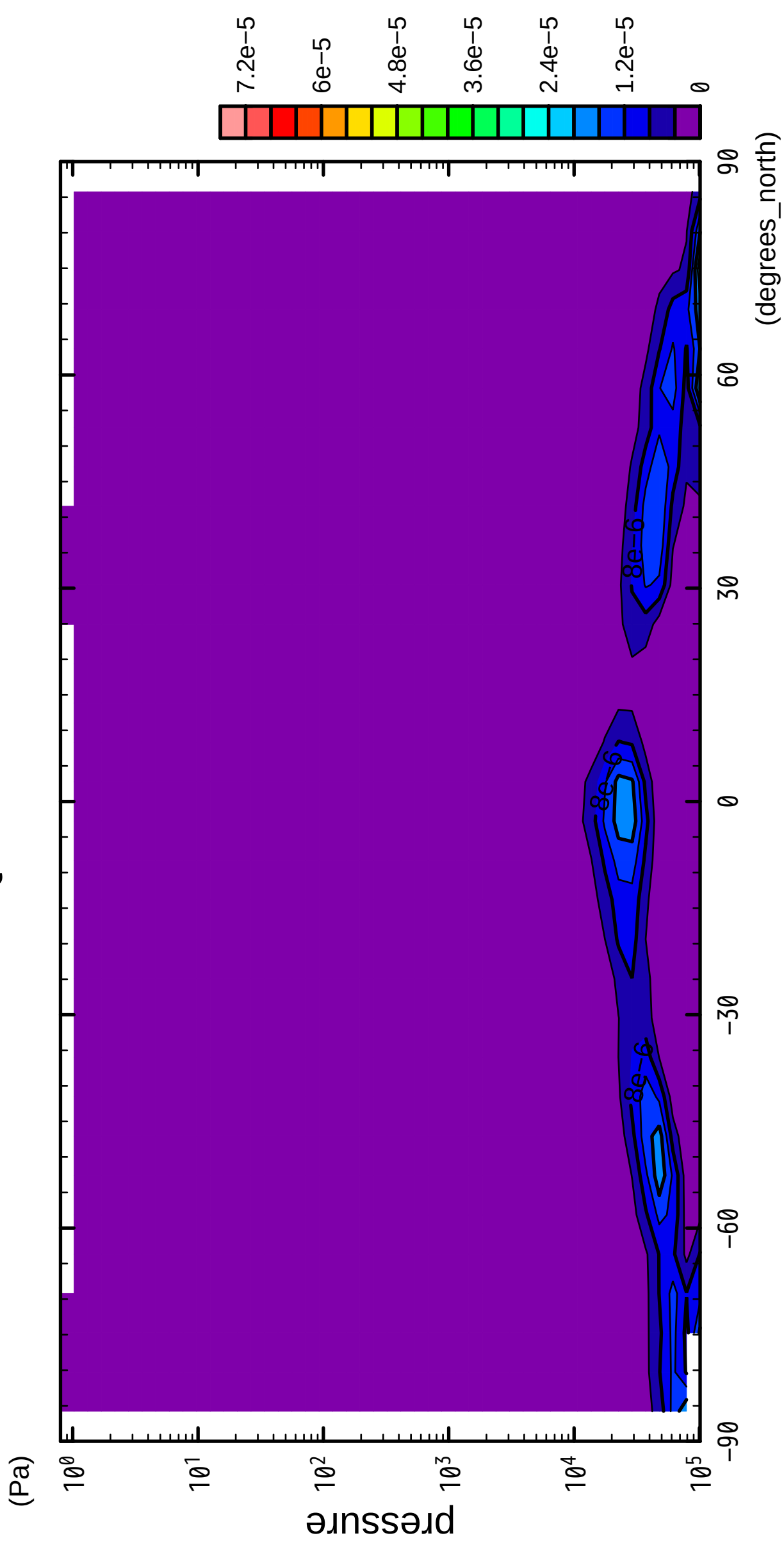


latitude

CONTOUR INTERVAL =  $4.000 \times 10^{-6}$

3/12

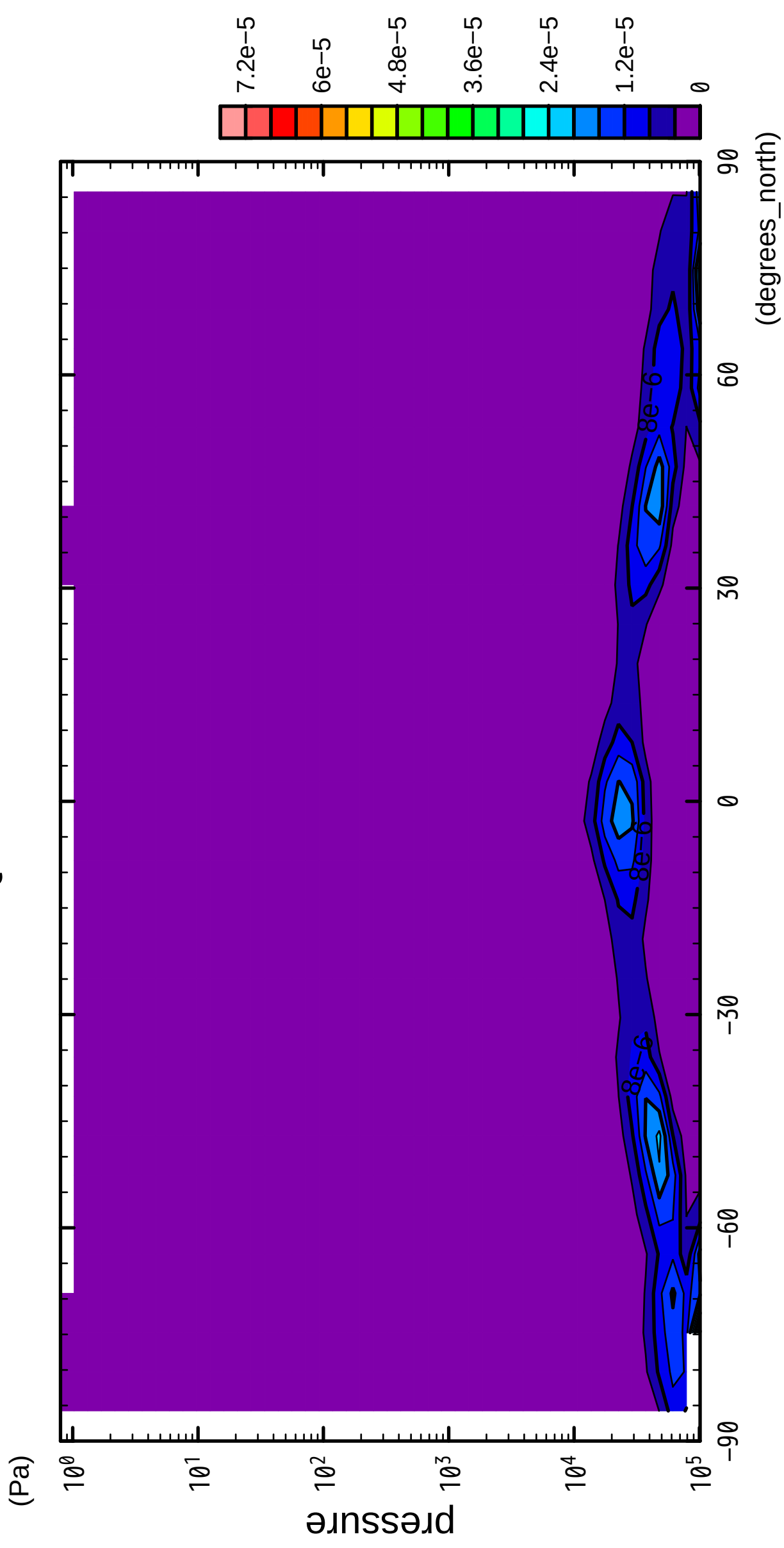
# QH2OSol



CONTOUR INTERVAL = 4.000E-06

4/12

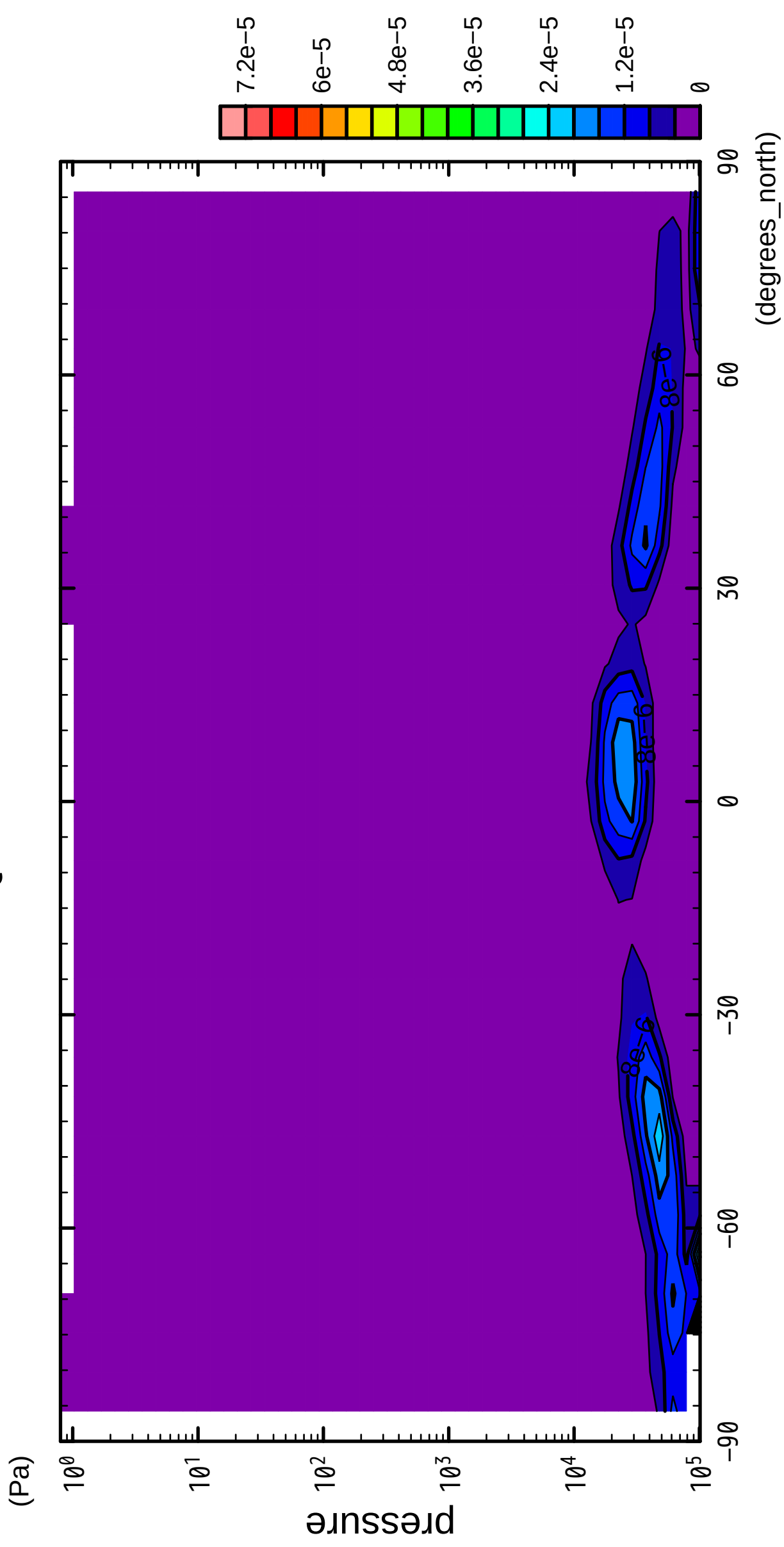
QH2OSol



CONTOUR INTERVAL = 4.000E-06

5/12

QH2OSol

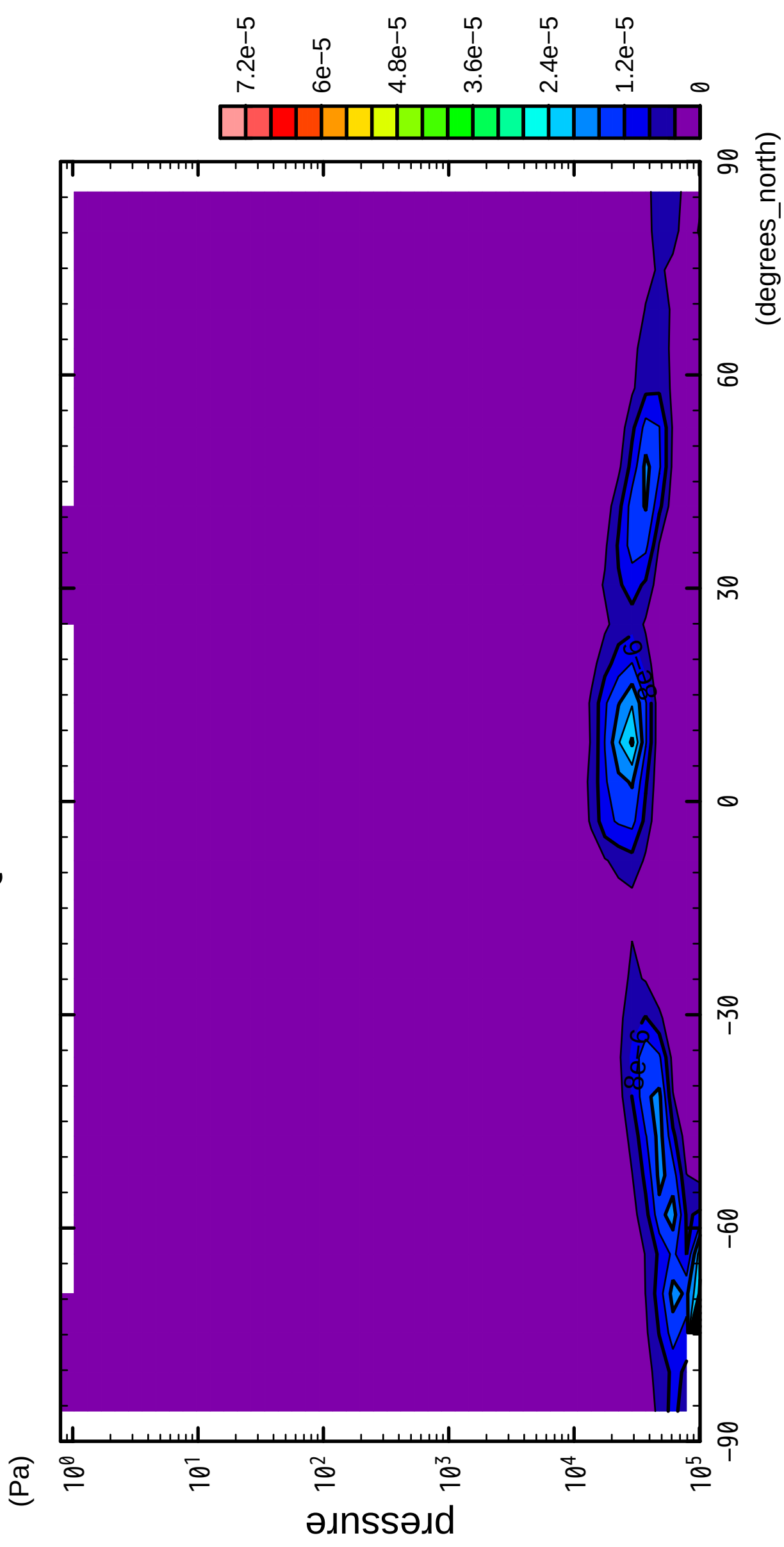


latitude

CONTOUR INTERVAL =  $4.000 \times 10^{-6}$

6/12

QH2OSol

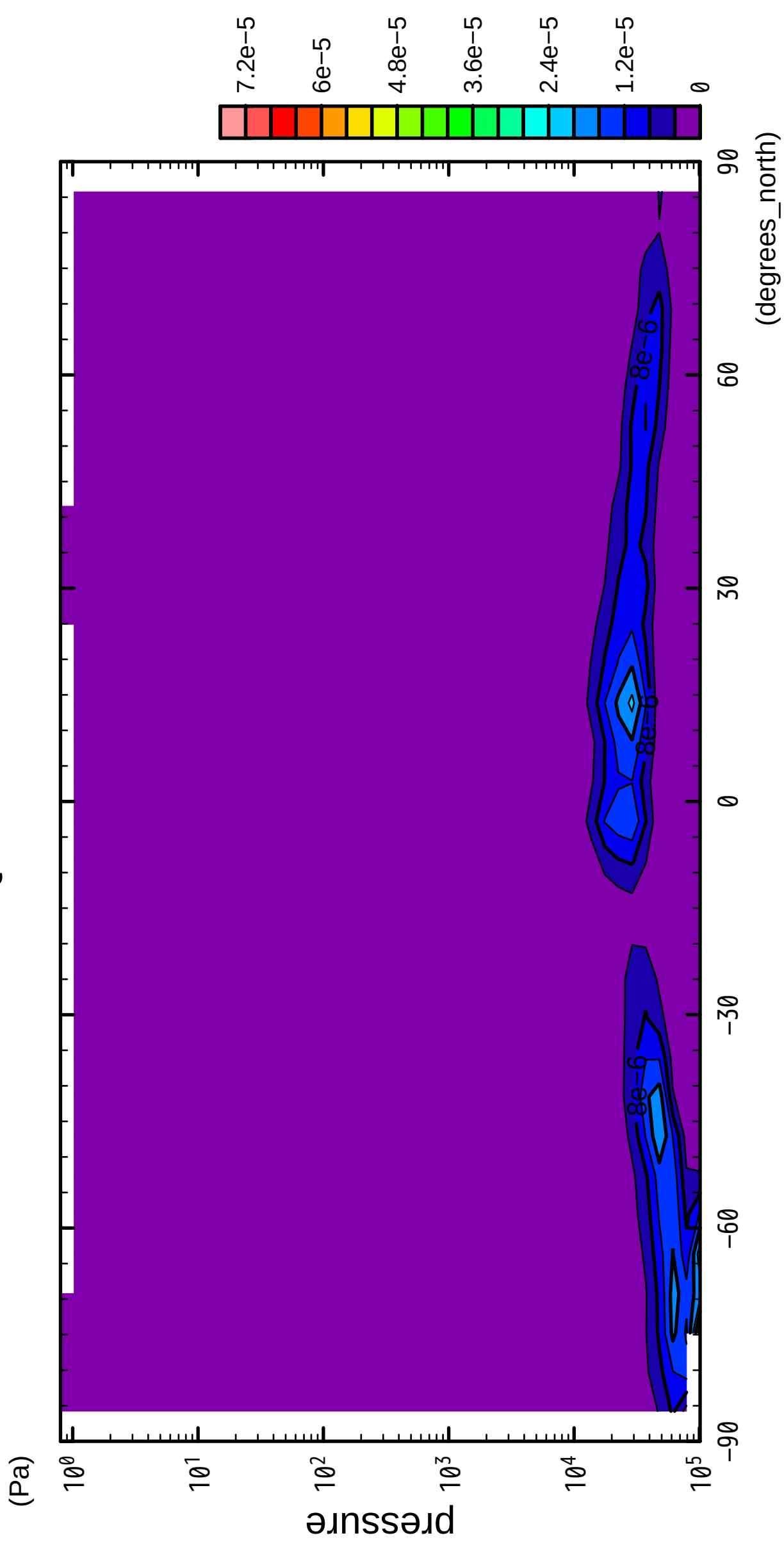


latitude

CONTOUR INTERVAL =  $4.000 \times 10^{-6}$

7/12

QH2OSol

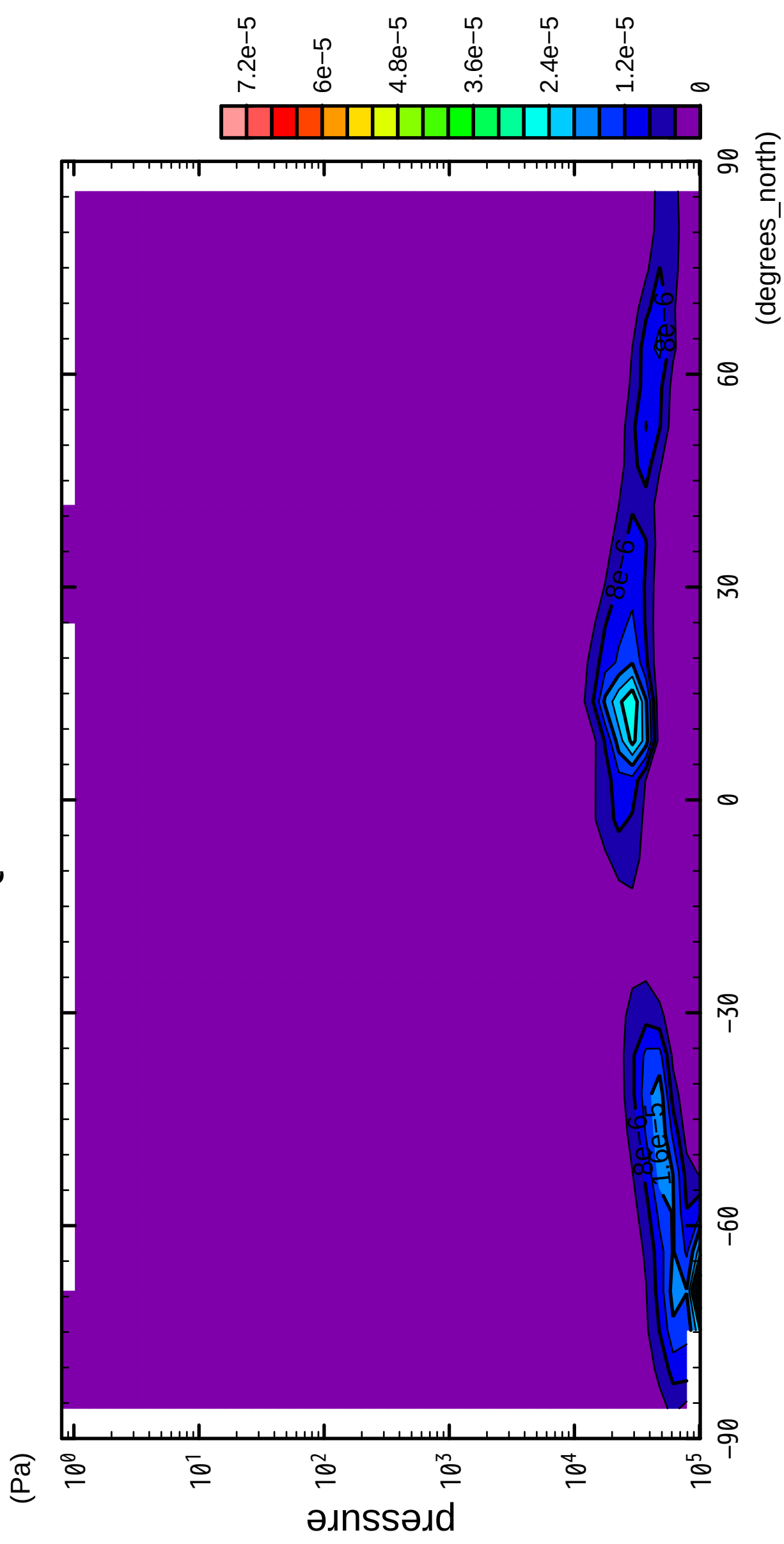


latitude

CONTOUR INTERVAL =  $4.000 \times 10^{-6}$

8/12

QH2OSol



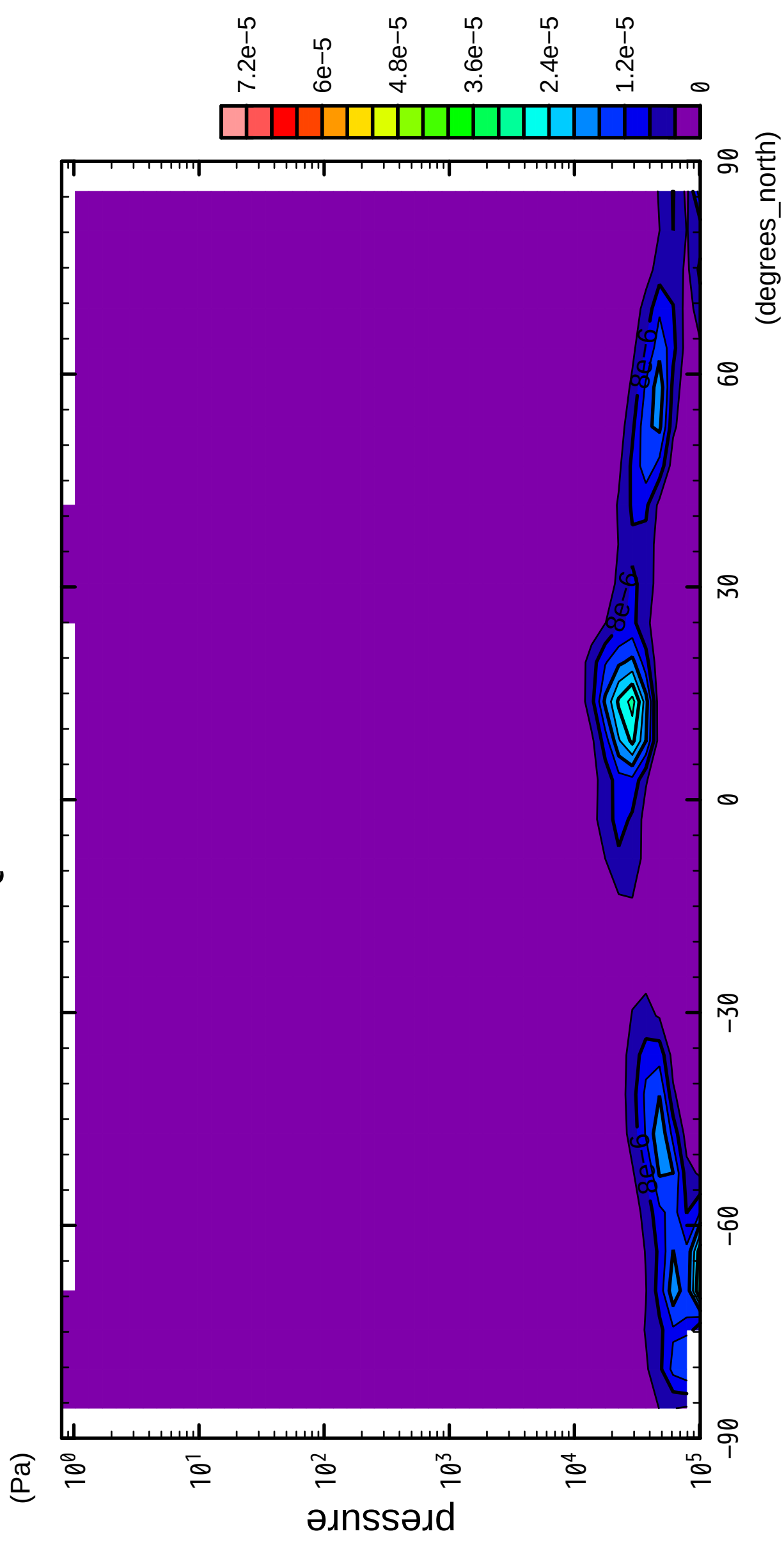
latitude

CONTOUR INTERVAL = 4.000E-06



9/12

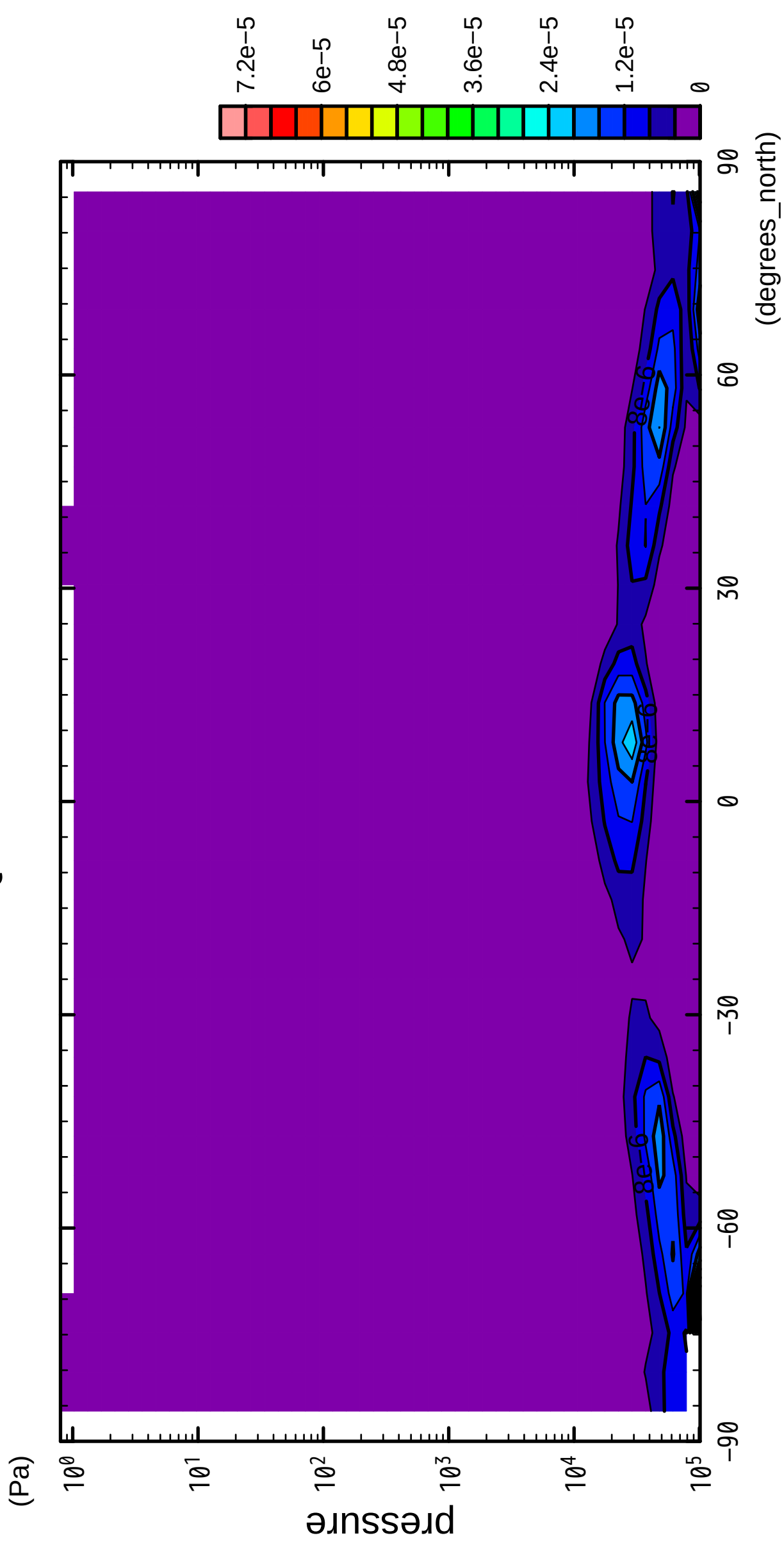
QH2OSol



CONTOUR INTERVAL = 4.000E-06

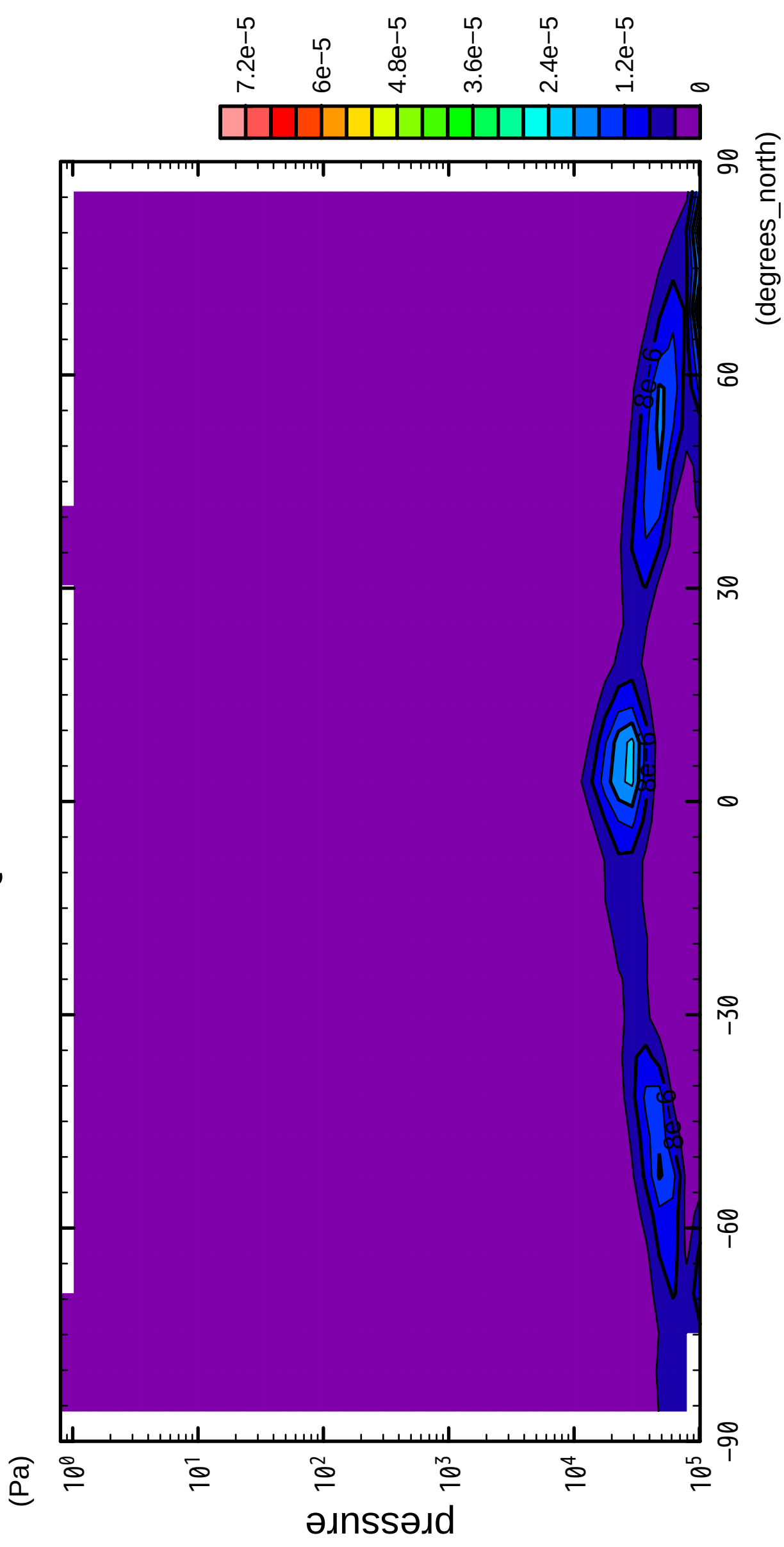
10/12

QH2OSol



11/12

QH2OSol

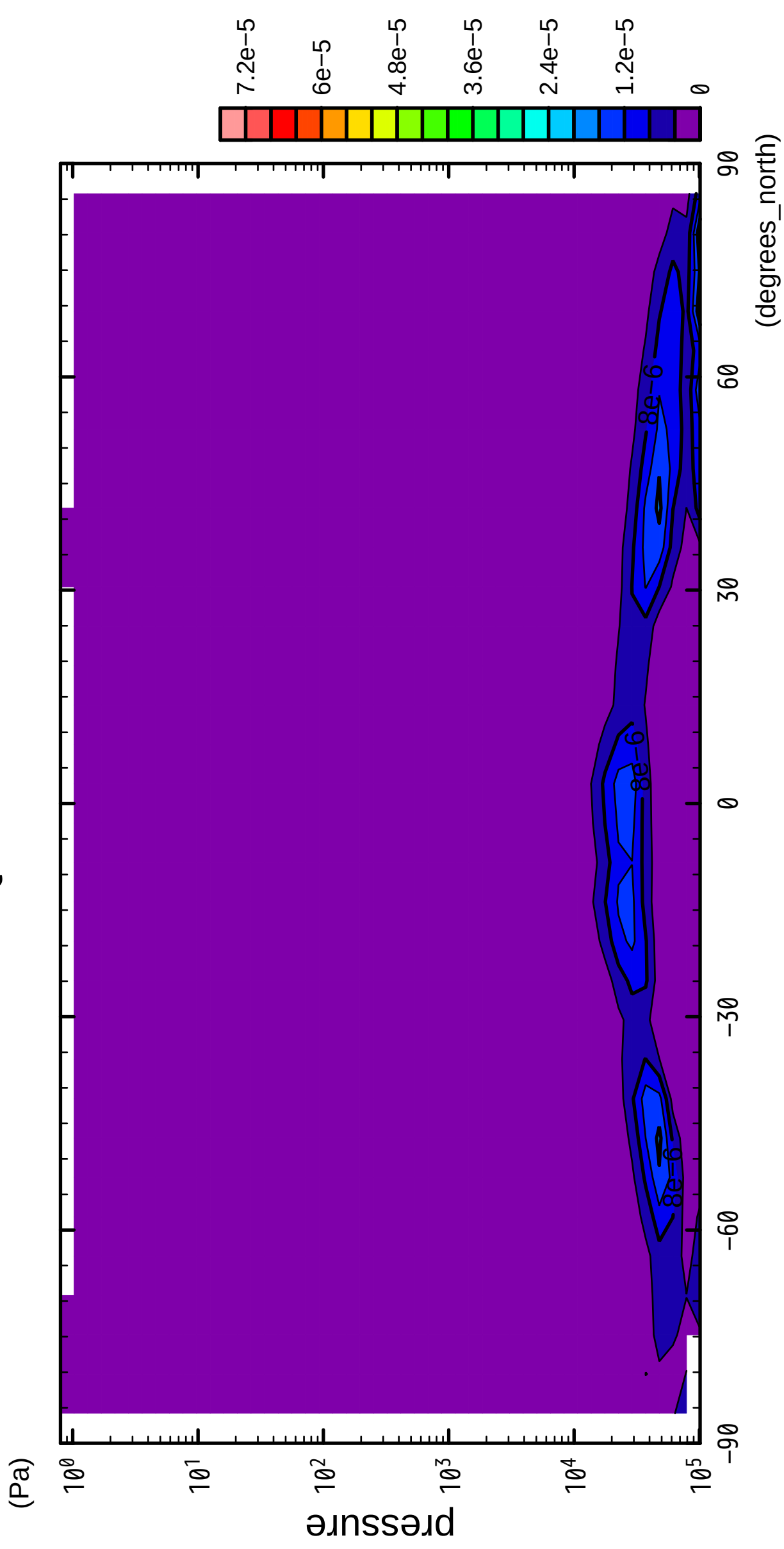


latitude

CONTOUR INTERVAL = 4.000E-06

12/12

QH2OSol



CONTOUR INTERVAL = 4.000E-06