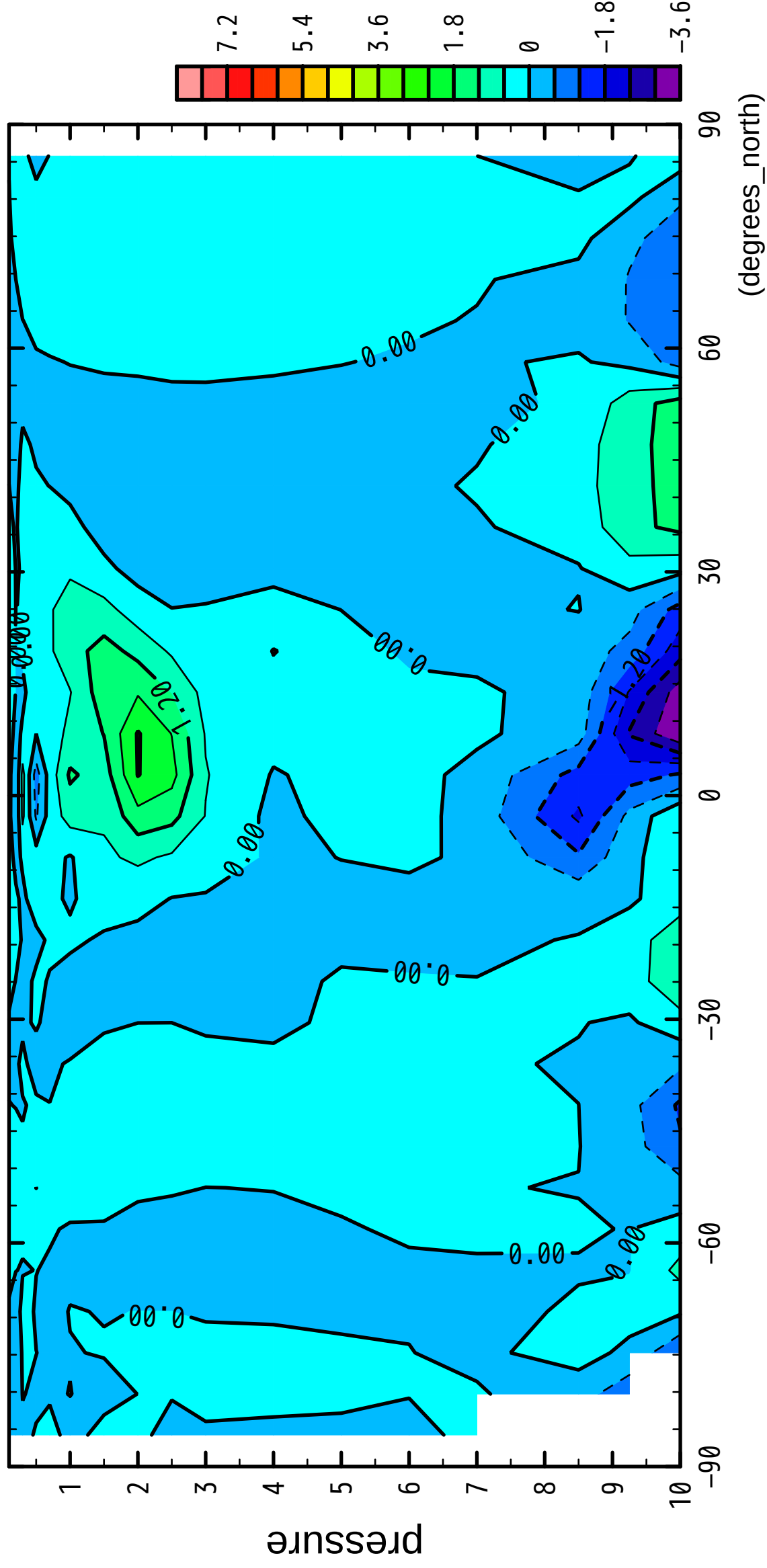


1/12

V

($\times 10^4$ Pa)



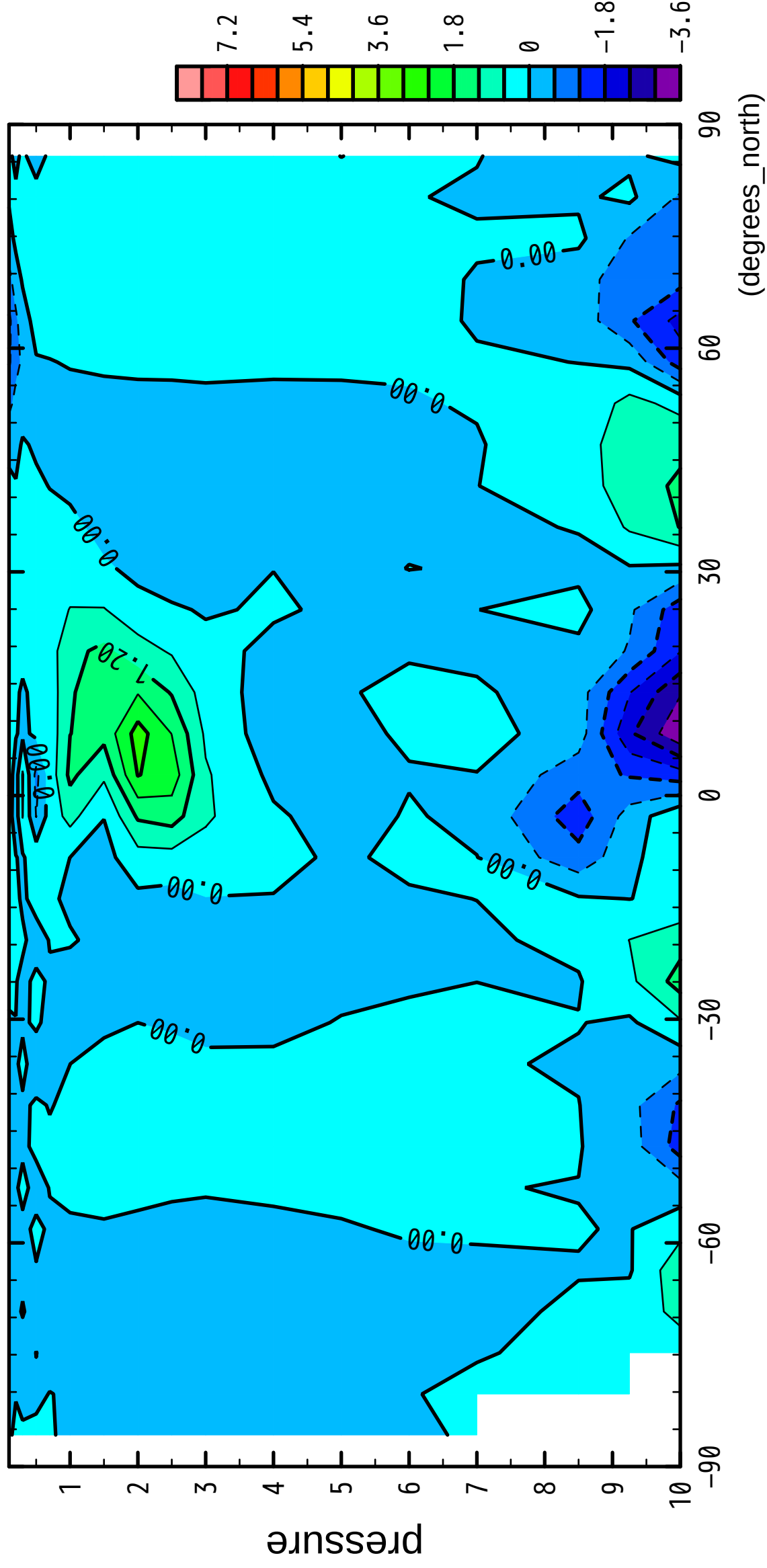
latitude

(degrees_north)

2/12

V

($\times 10^4$ Pa)

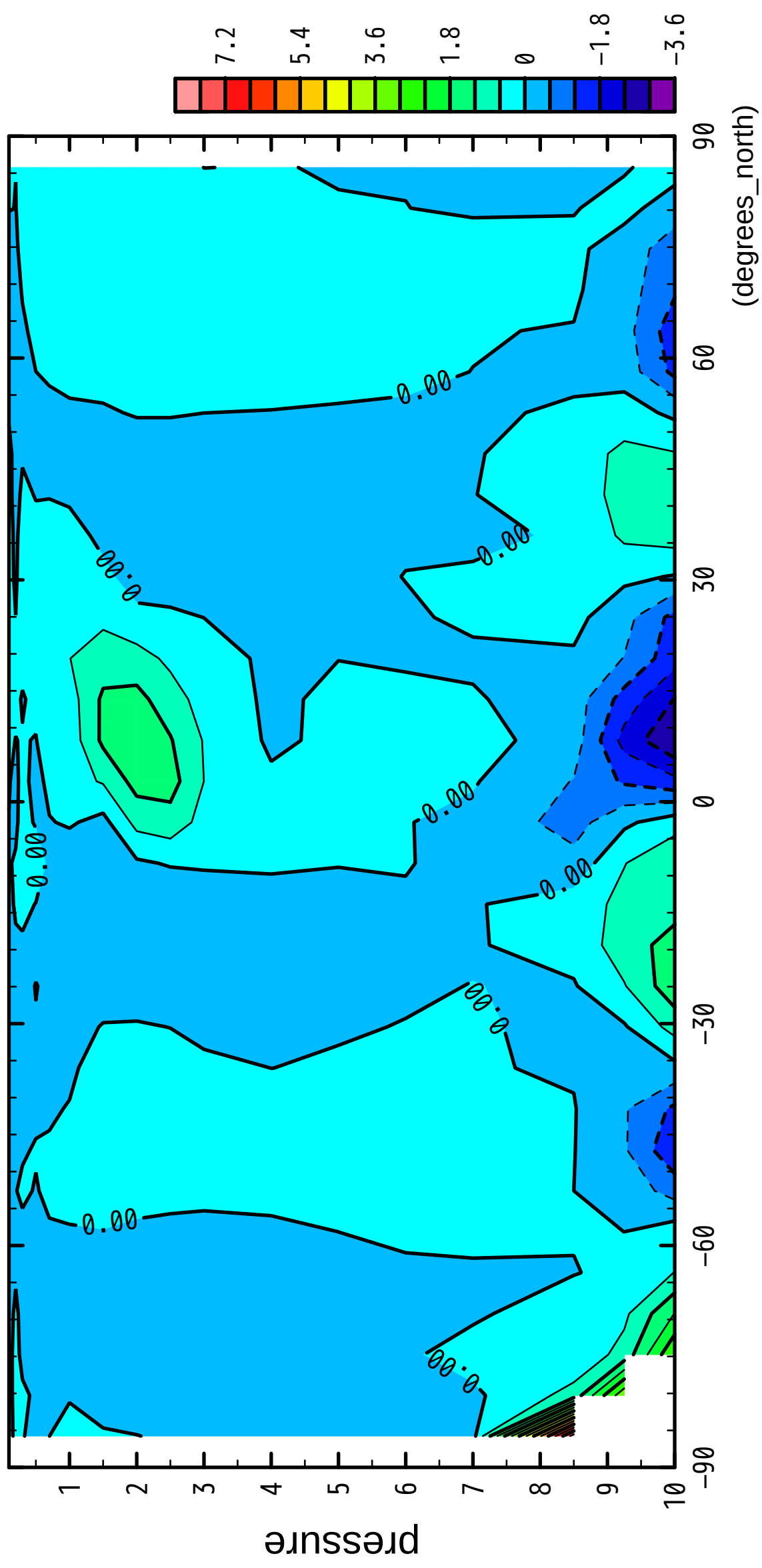


latitude

3/12

V

($\times 10^4$ Pa)



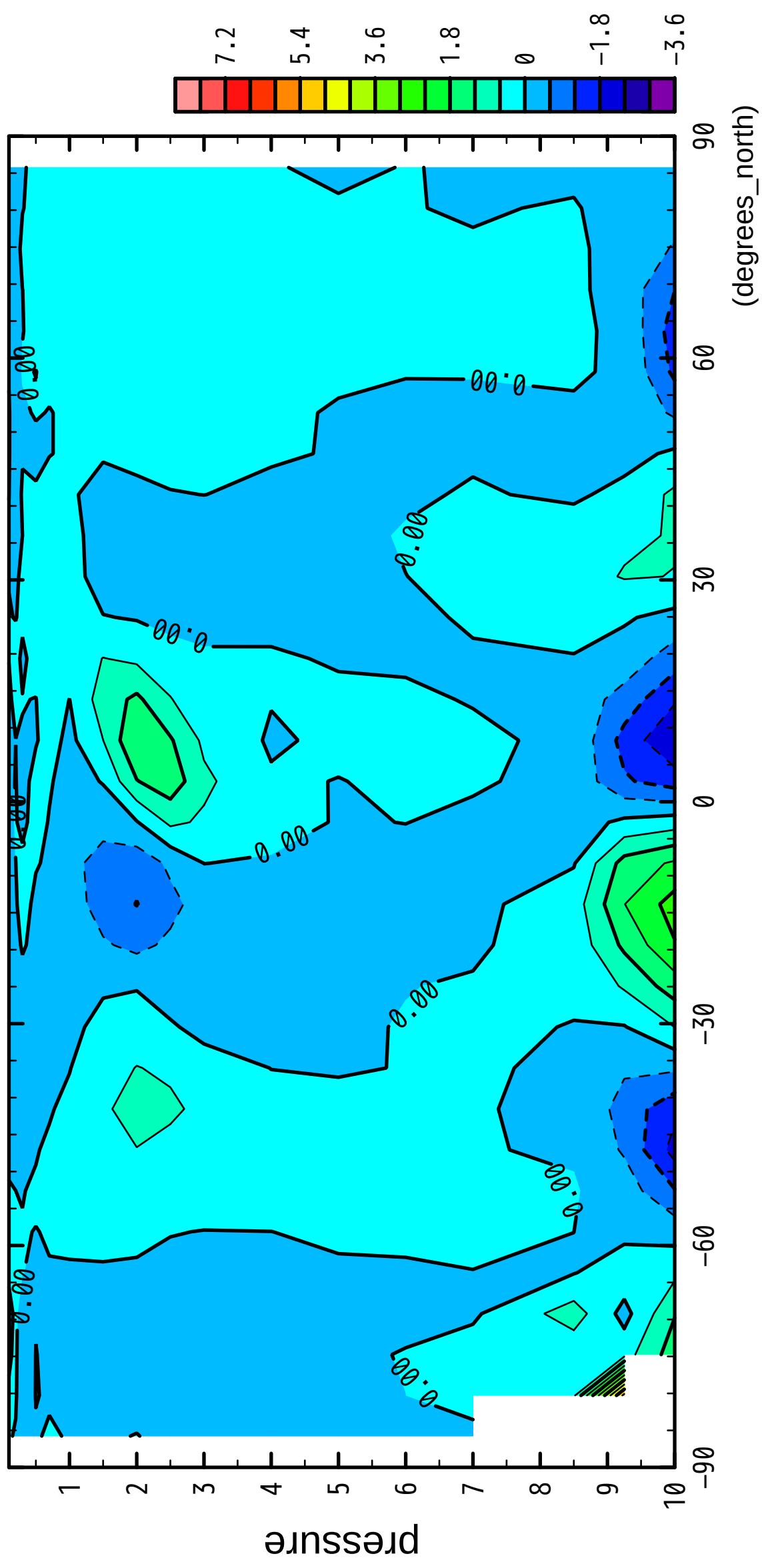
latitude

(degrees_north)

4/12

V

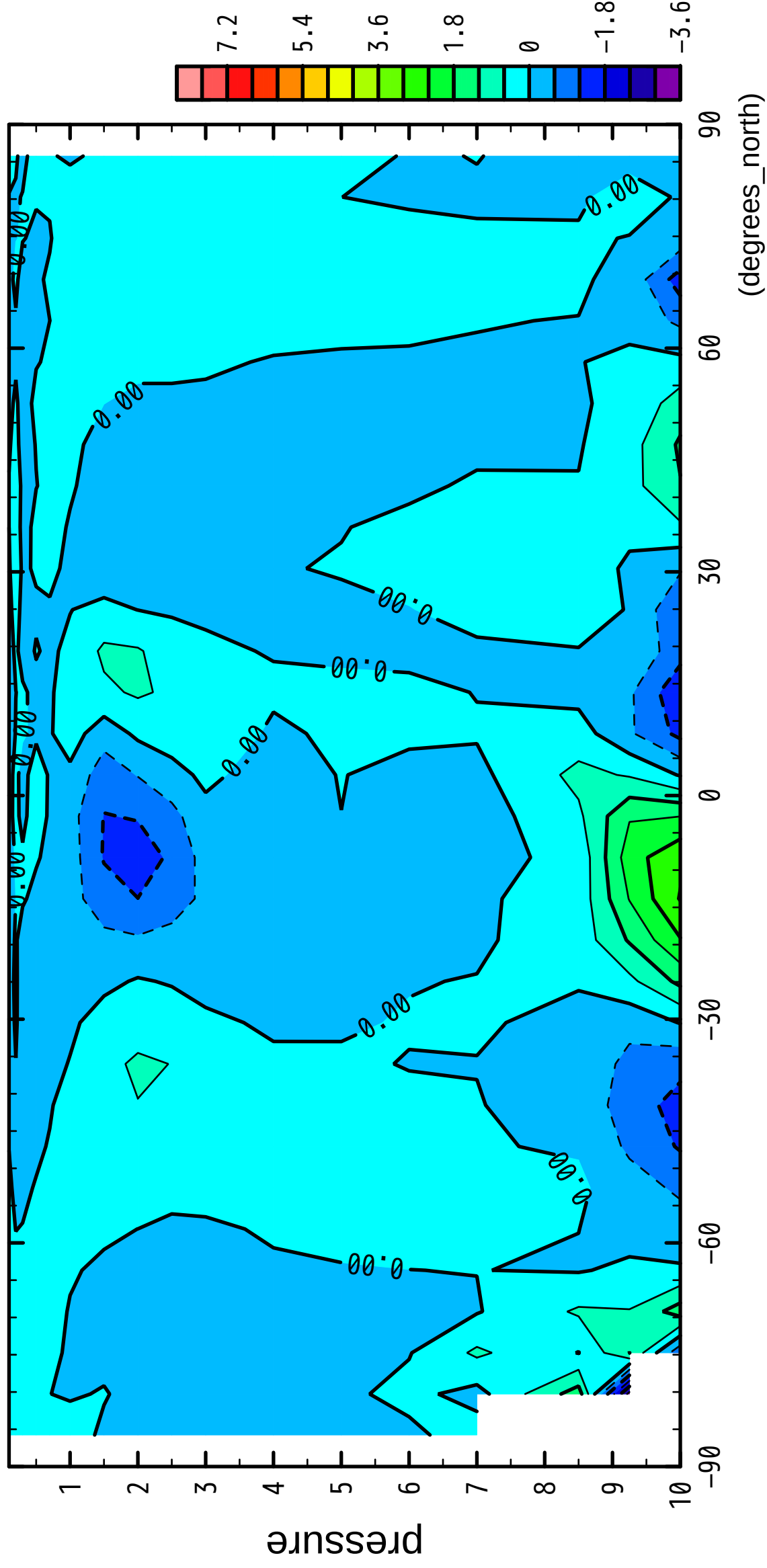
($\times 10^4$ Pa)



5/12

V

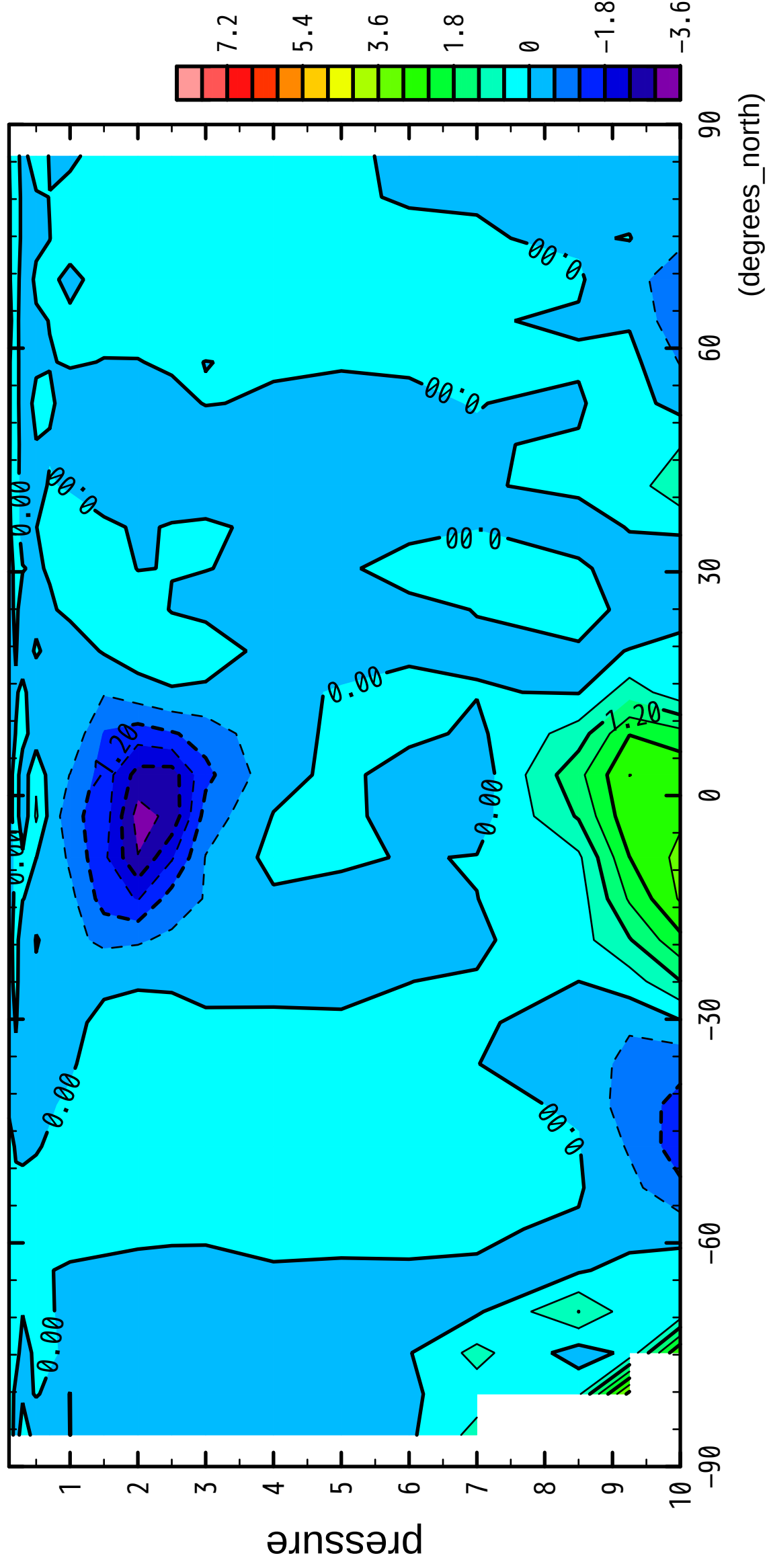
($\times 10^4$ Pa)



6/12

V

($\times 10^4$ Pa)



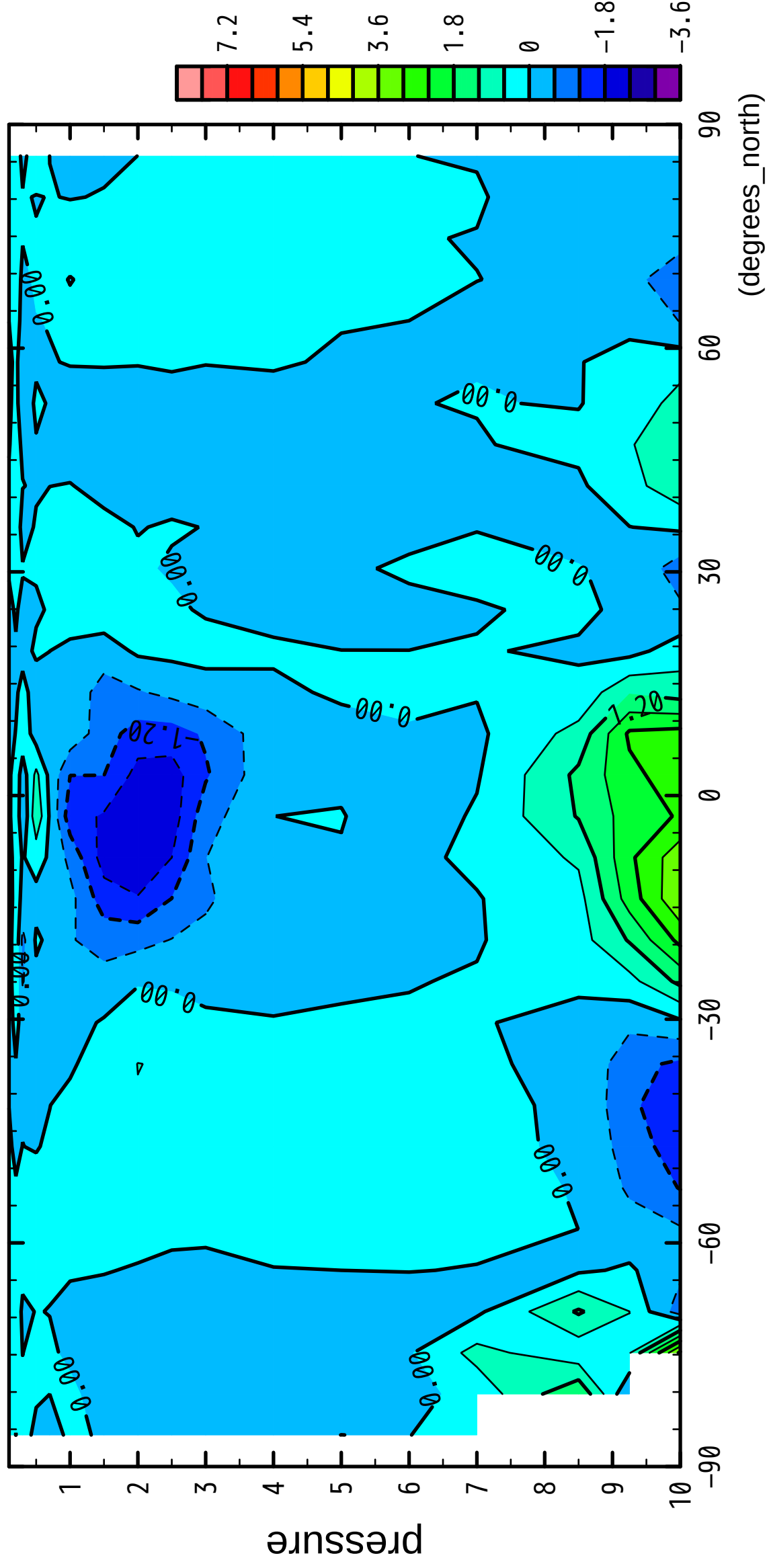
latitude

(degrees_north)

7/12

V

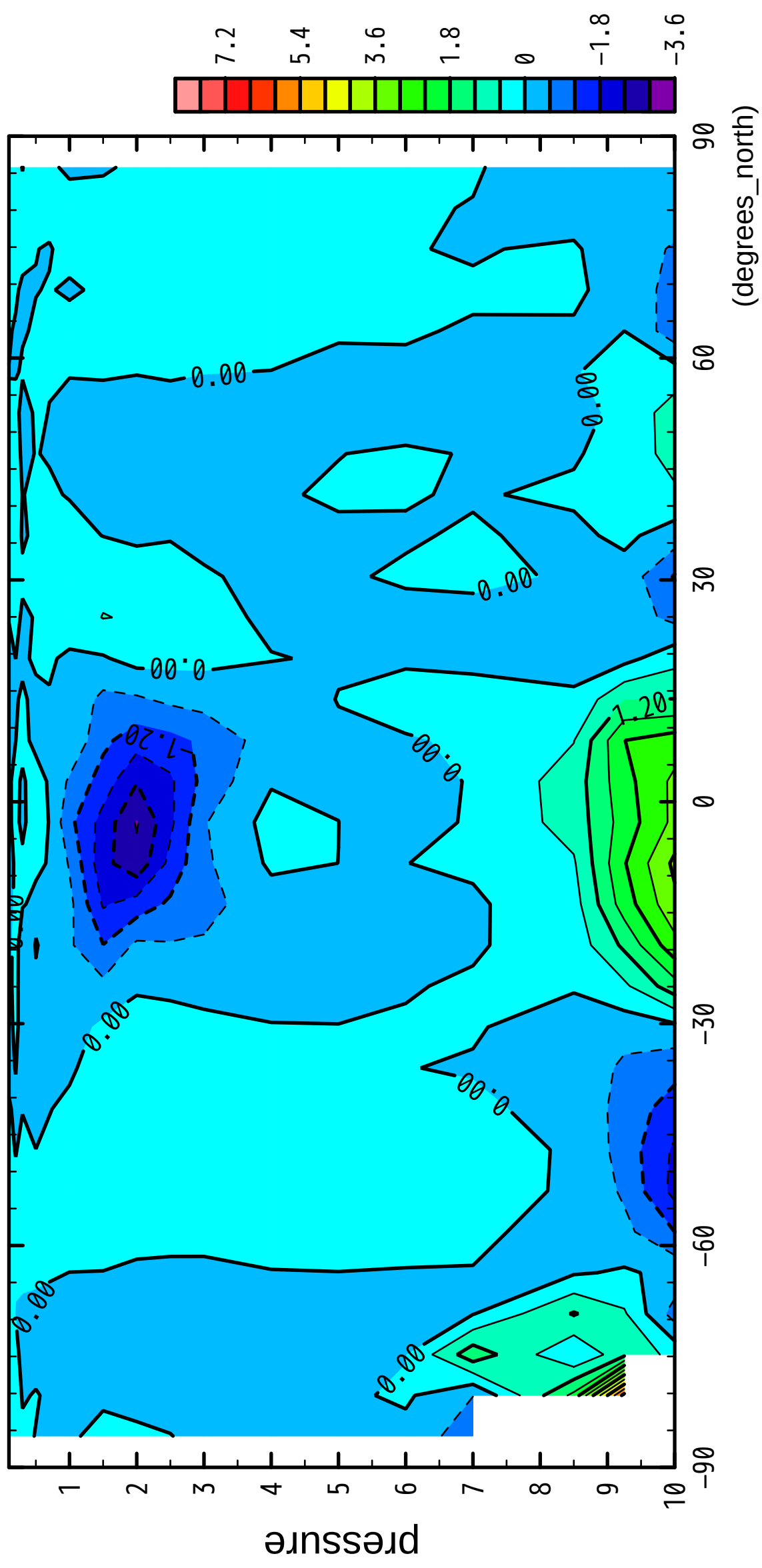
($\times 10^4$ Pa)



8/12

V

($\times 10^4$ Pa)



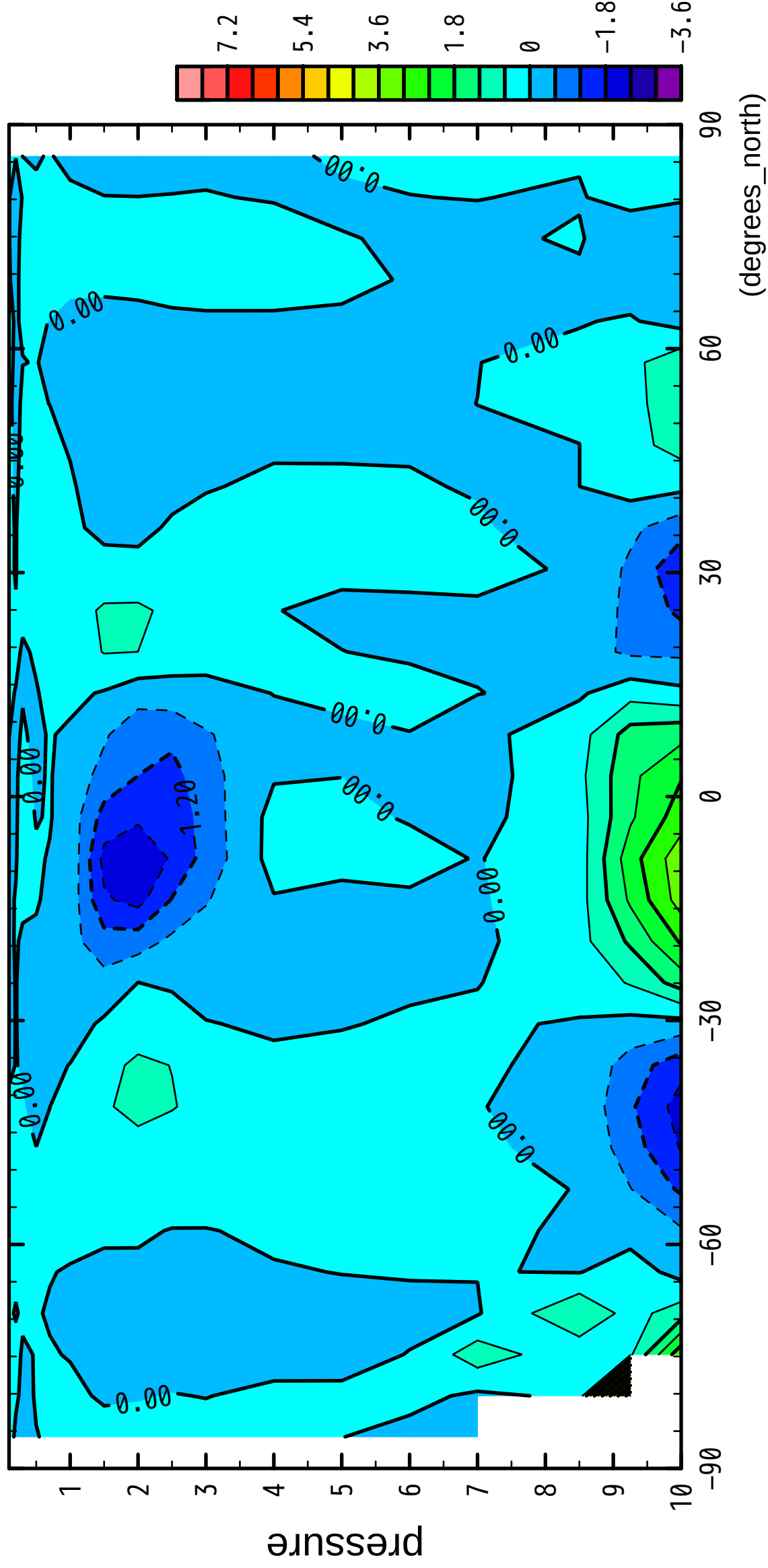
latitude

(degrees_north)

9/12

V

($\times 10^4$ Pa)



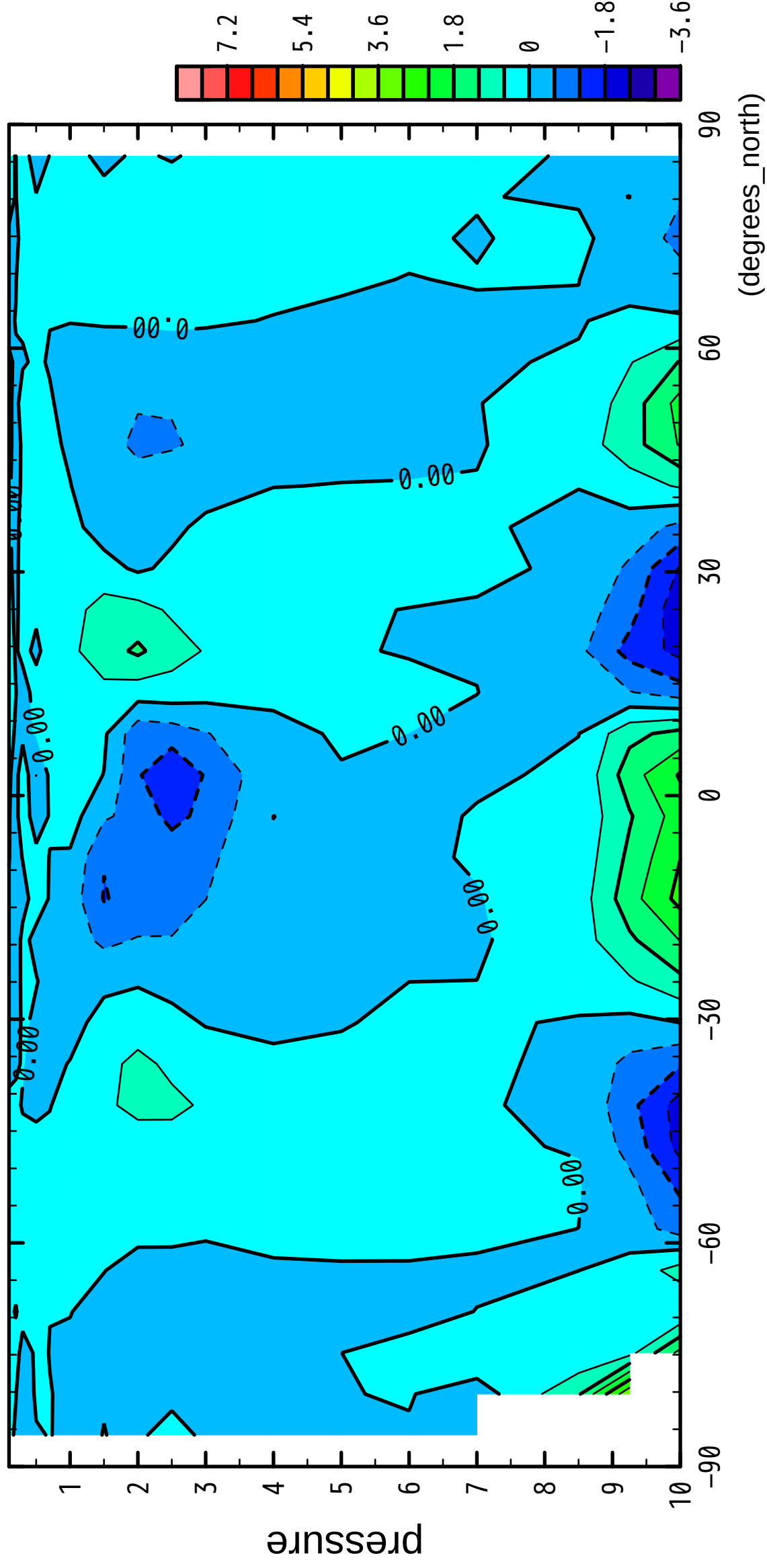
latitude

(degrees_north)

10/12

V

($\times 10^4$ Pa)



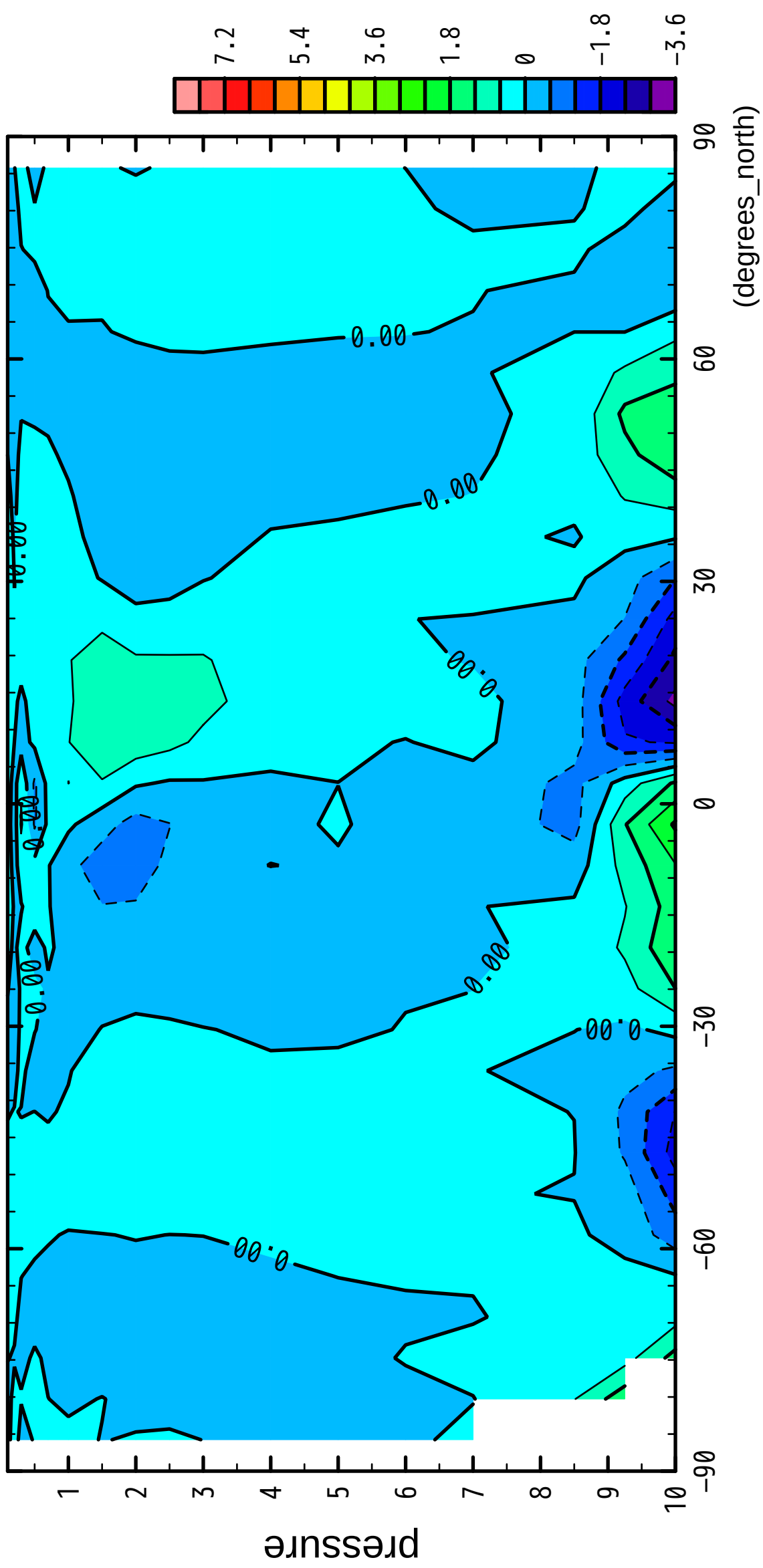
latitude

(degrees_north)

11/12

V

($\times 10^4$ Pa)



12/12

V

($\times 10^4$ Pa)

