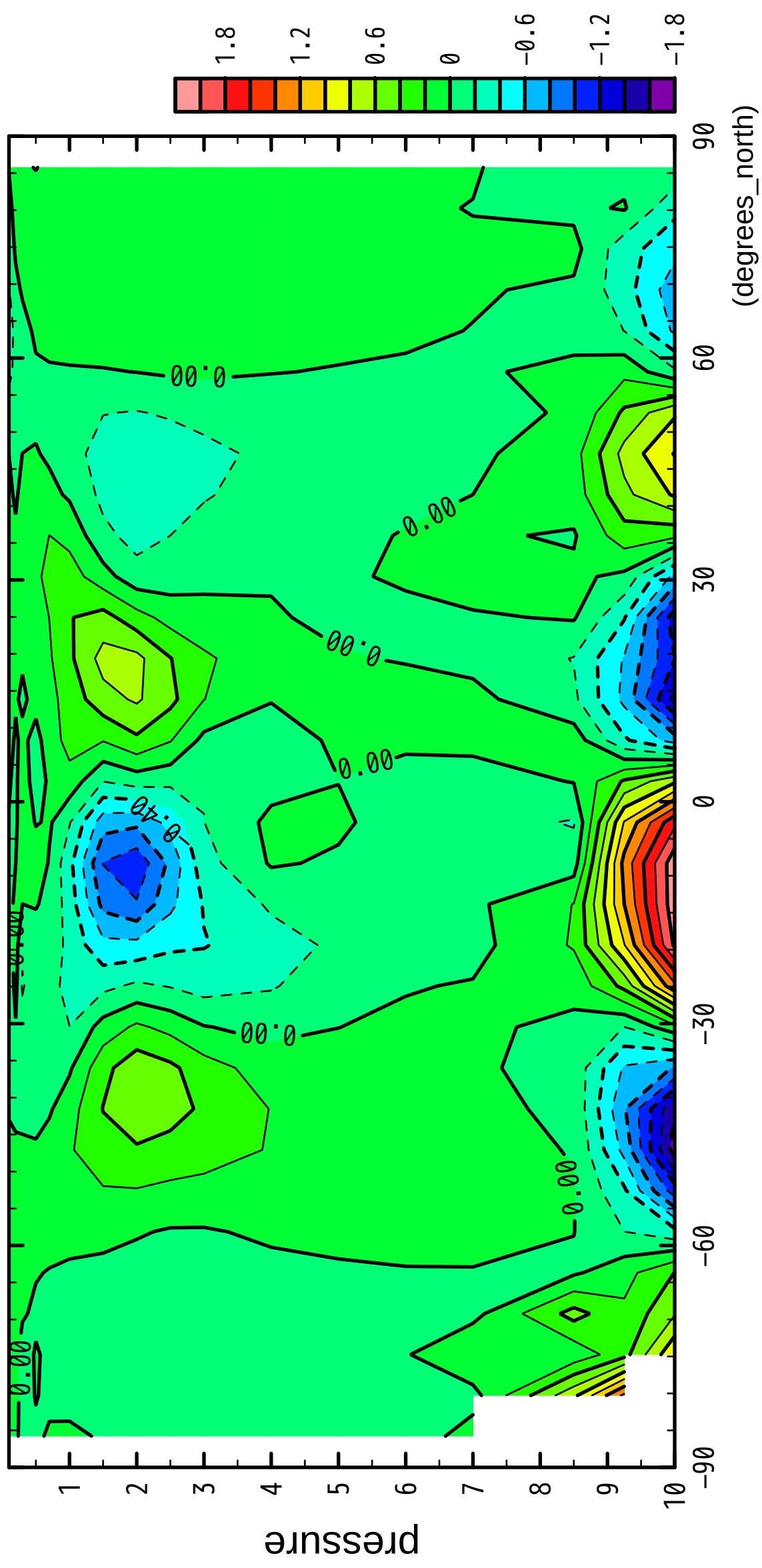


V

( $\times 10^4$  Pa)



latitude

(degrees\_north)

pressure

1.8

1.2

0.6

0

-0.6

-1.2

-1.8

1

2

3

4

5

6

7

8

9

10

00.0

00.0

0.00

0.7

00.0

0.00

0.00

-90

-60

-30

0

30

60

90