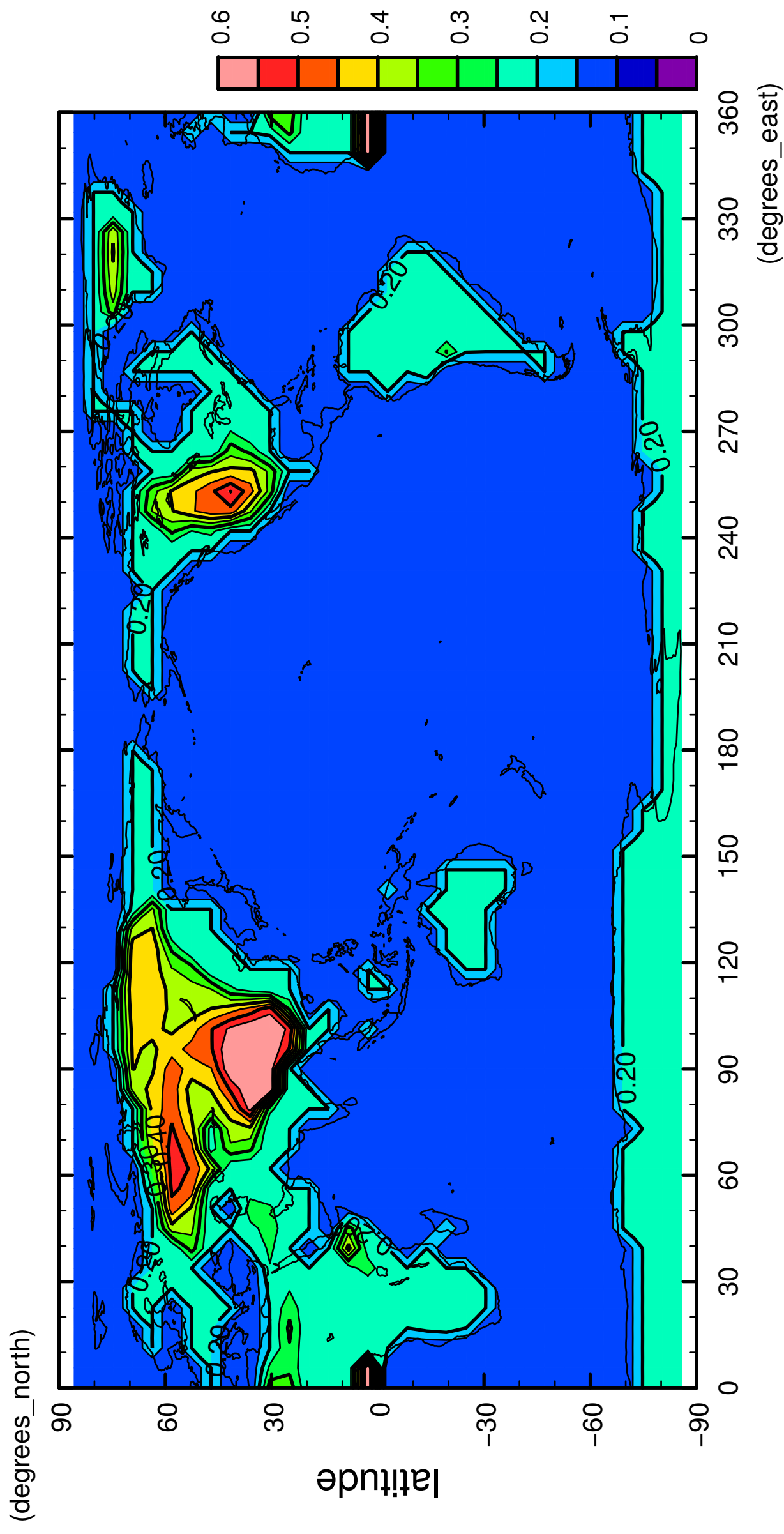


1/12

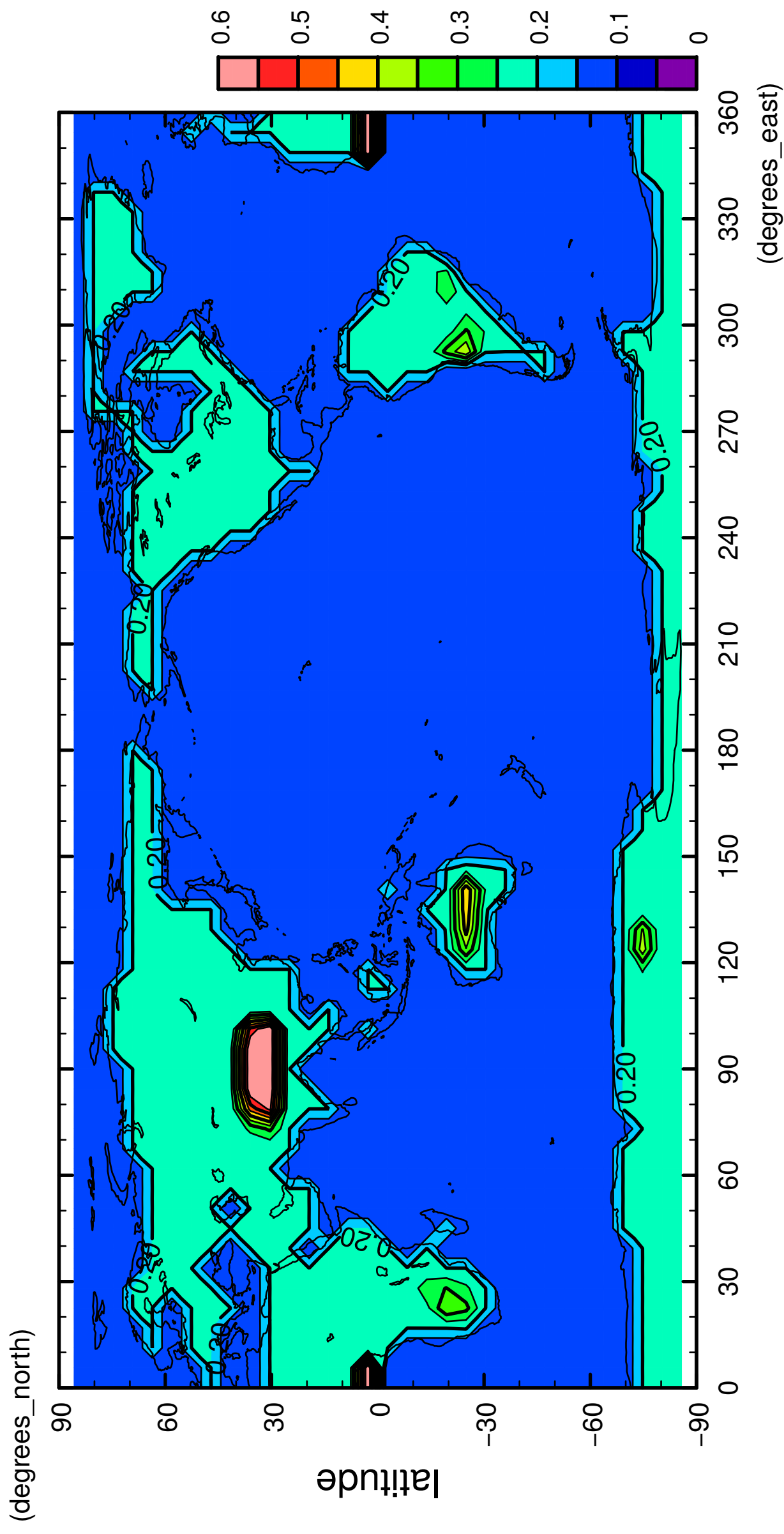
# surface albedo



longitude  
CONTOUR INTERVAL = 5.000E-02

2/12

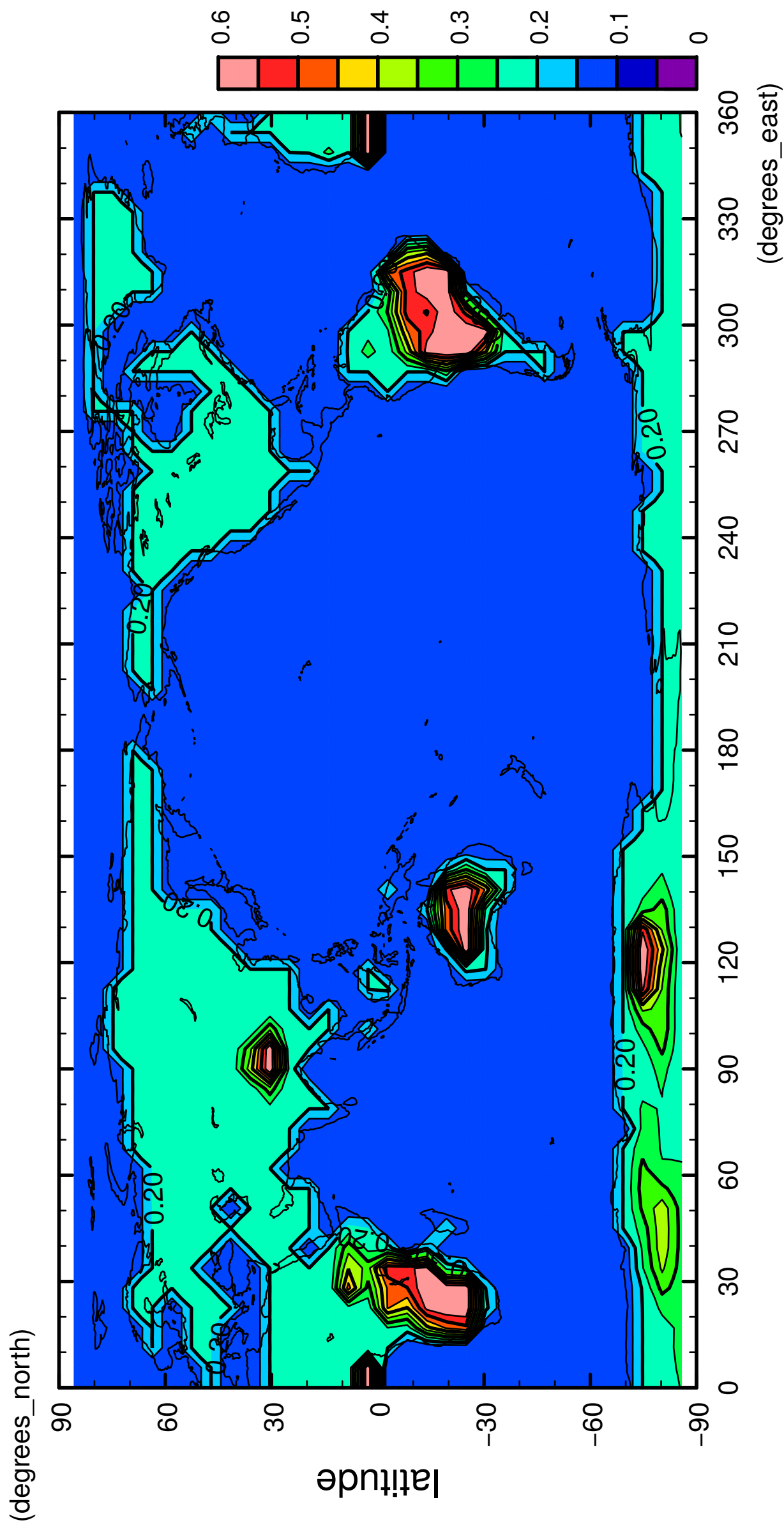
# surface albedo



longitude  
CONTOUR INTERVAL = 5.000E-02

3/12

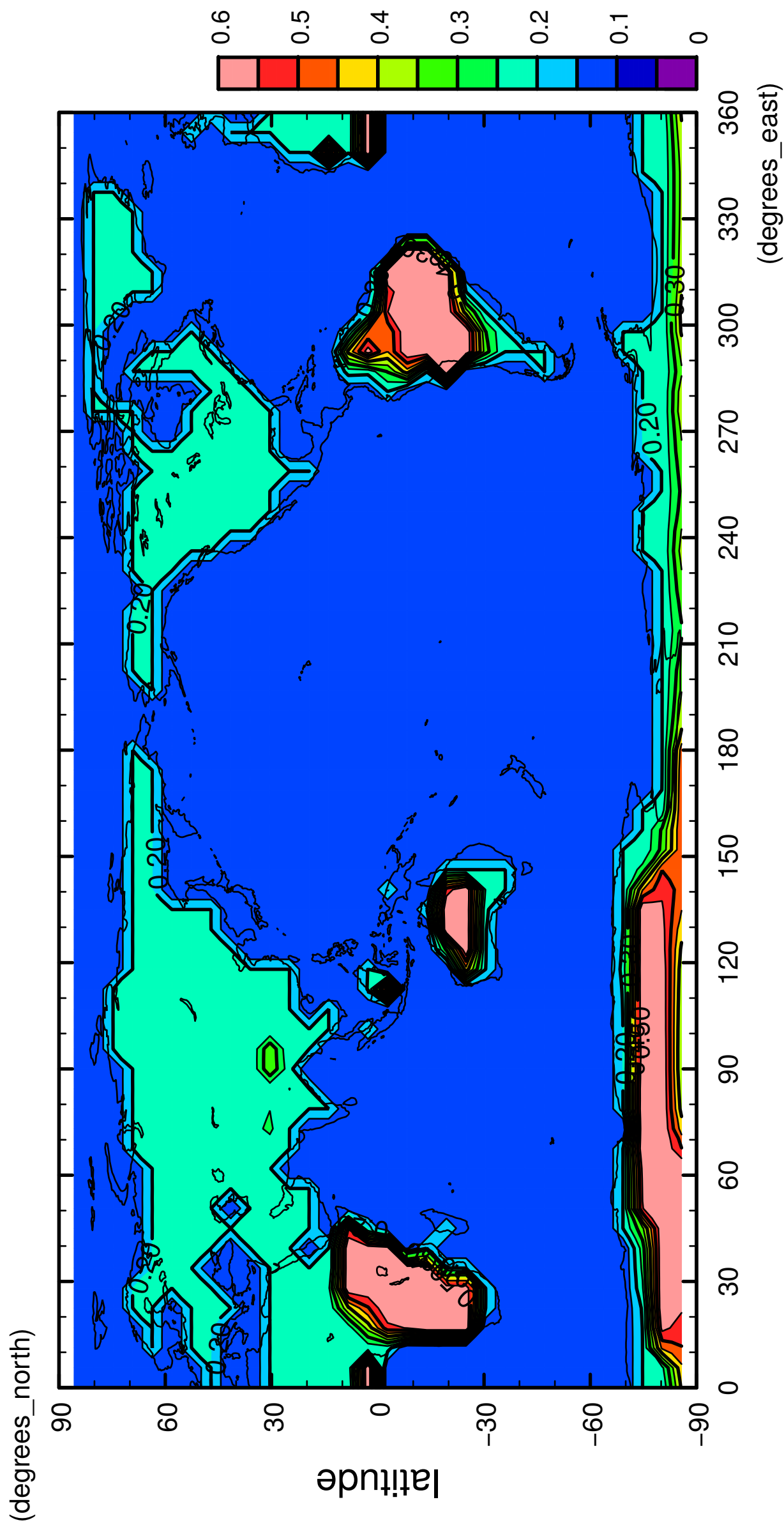
# surface albedo



longitude  
CONTOUR INTERVAL = 5.000E-02

4/12

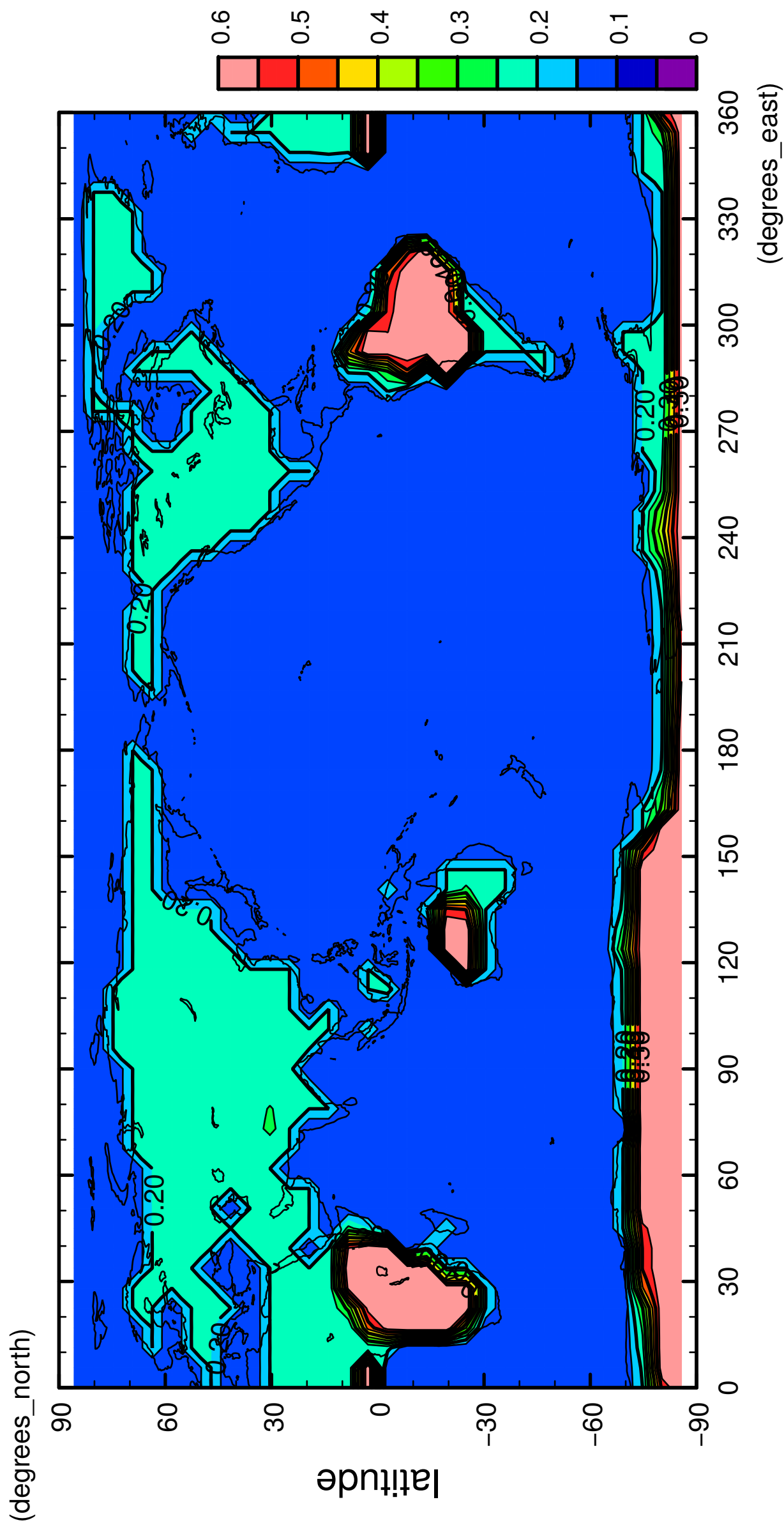
# surface albedo



longitude  
CONTOUR INTERVAL = 5.000E-02

5/12

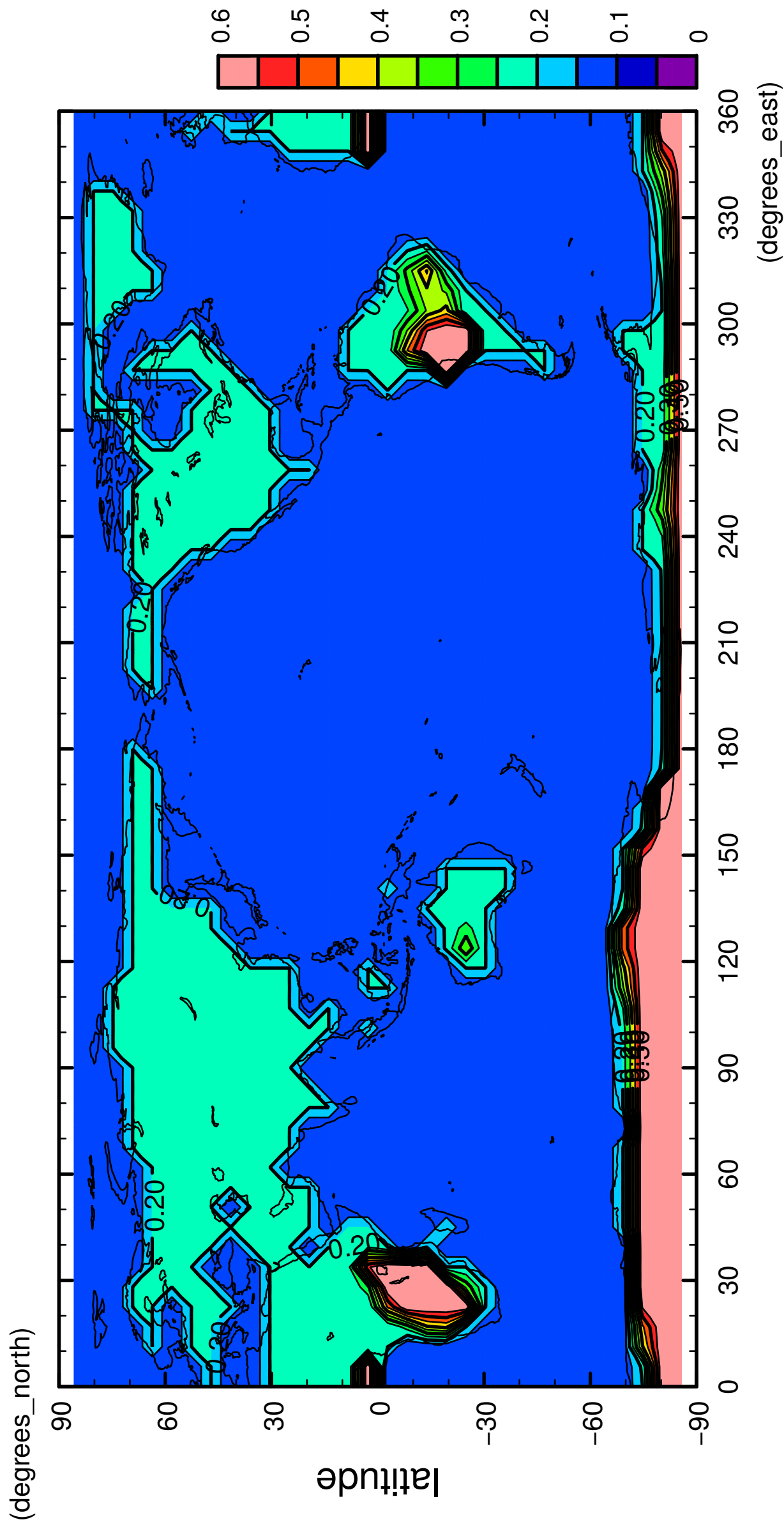
# surface albedo



longitude  
CONTOUR INTERVAL = 5.000E-02

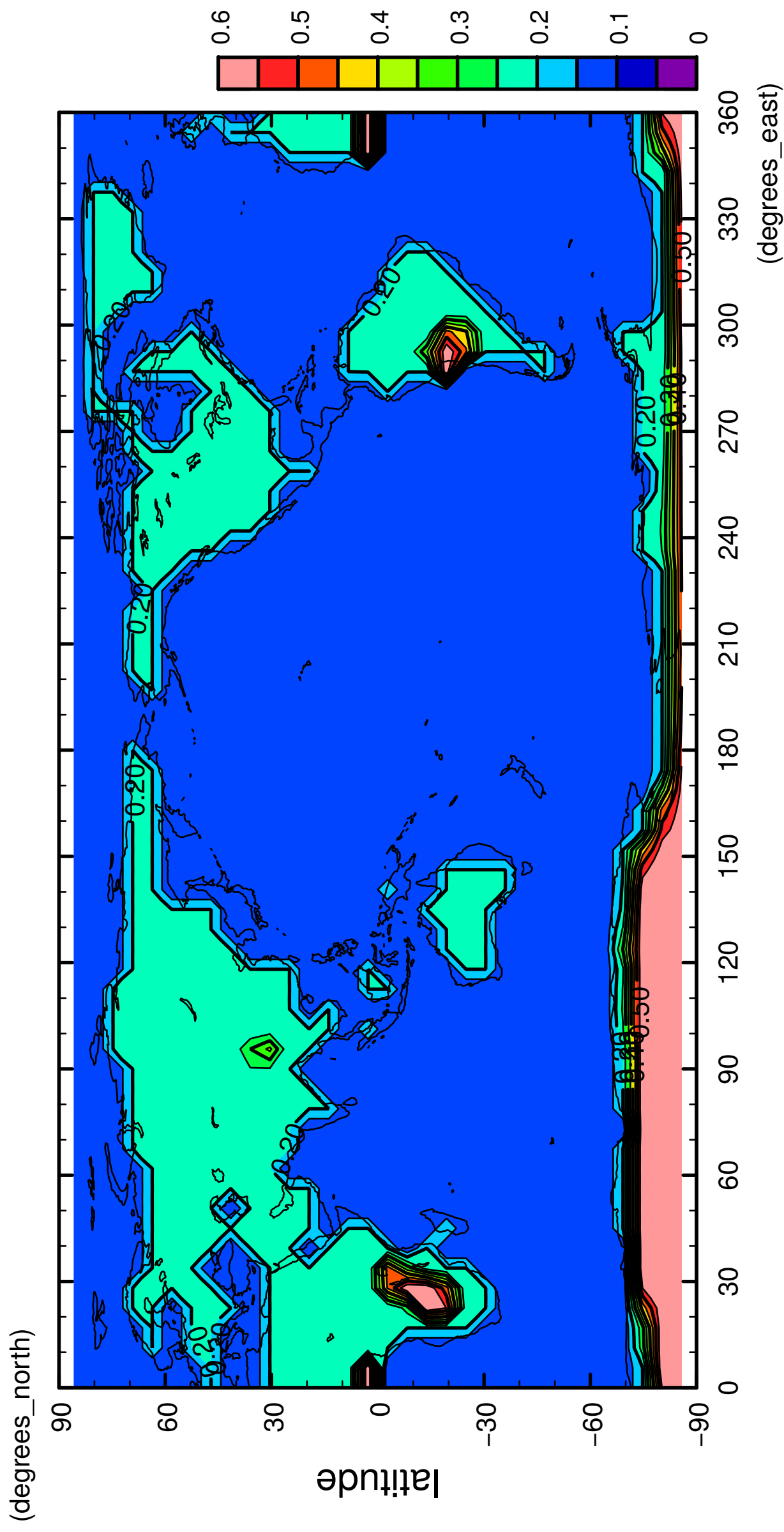
6/12

# surface albedo



7/12

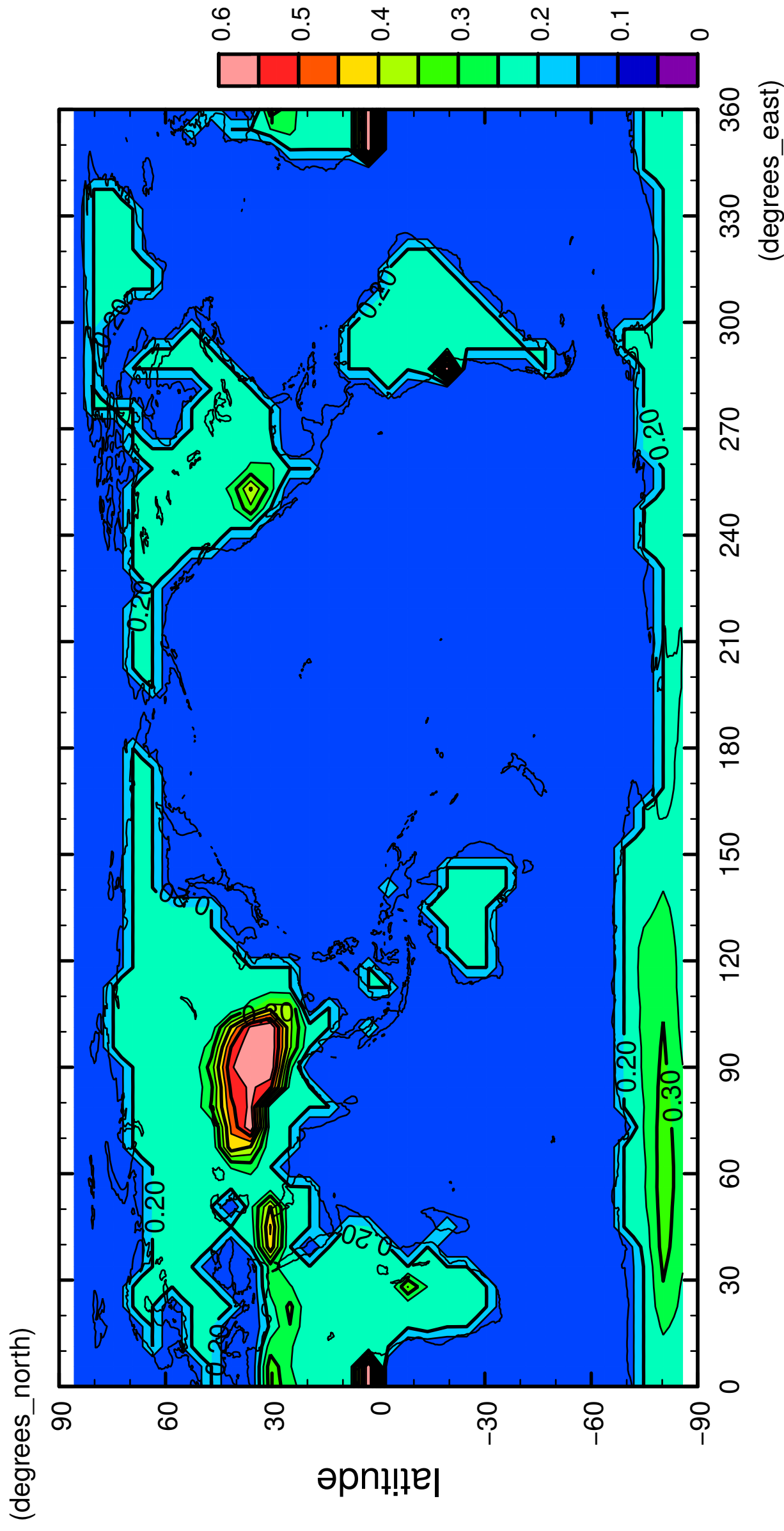
# surface albedo



longitude  
CONTOUR INTERVAL = 5.000E-02

8/12

surface albedo

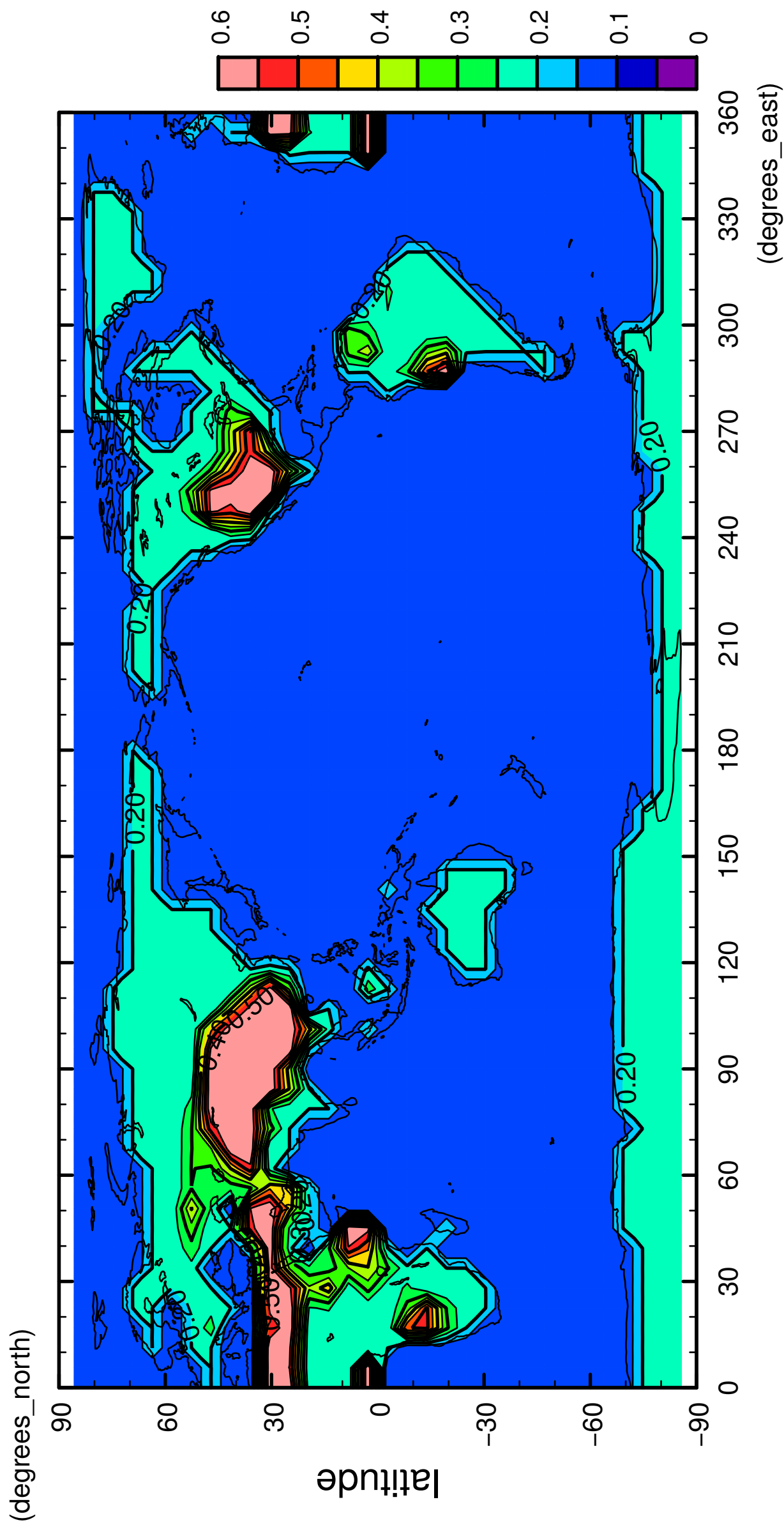


longitude  
CONTOUR INTERVAL = 5.000E-02



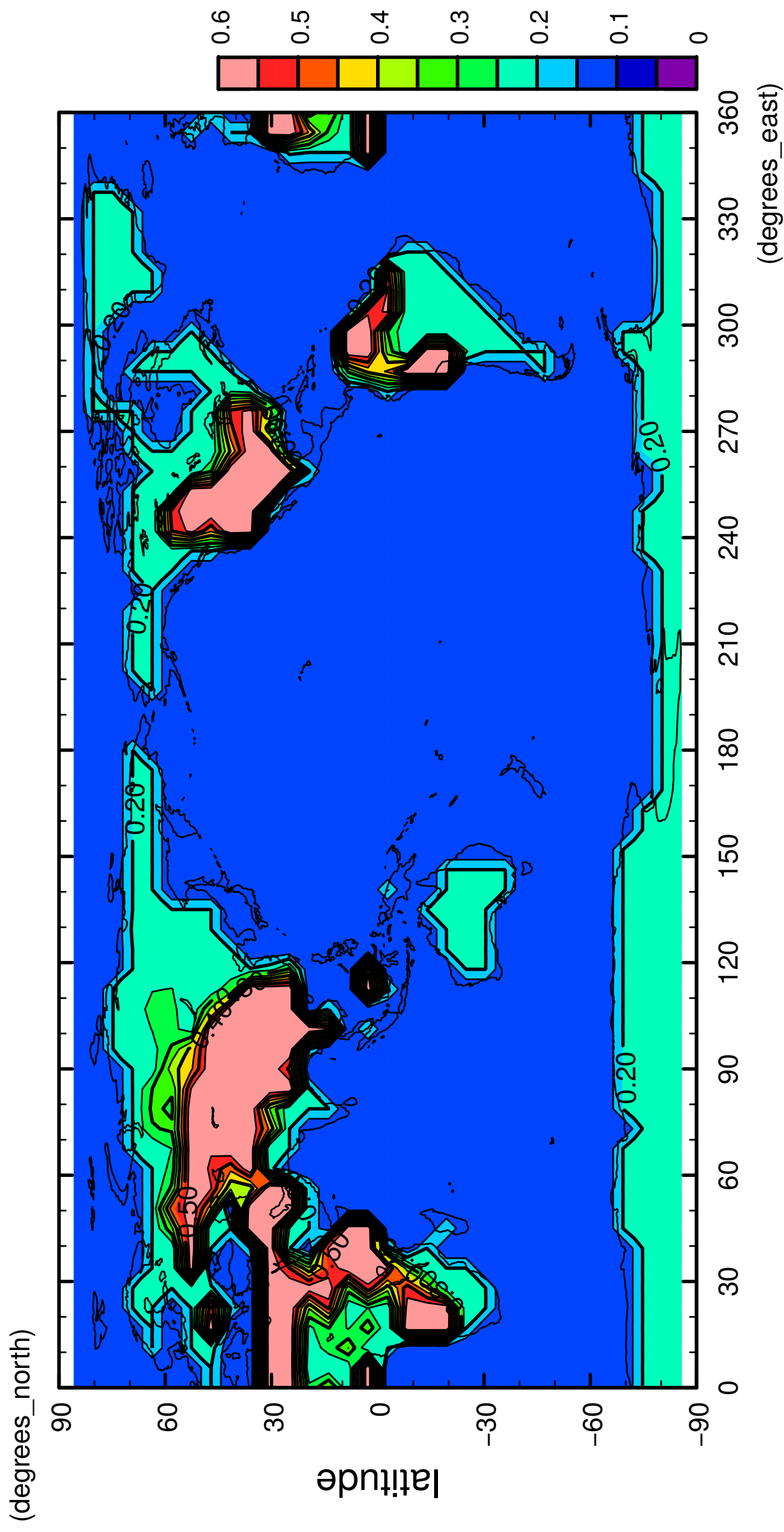
9/12

surface albedo



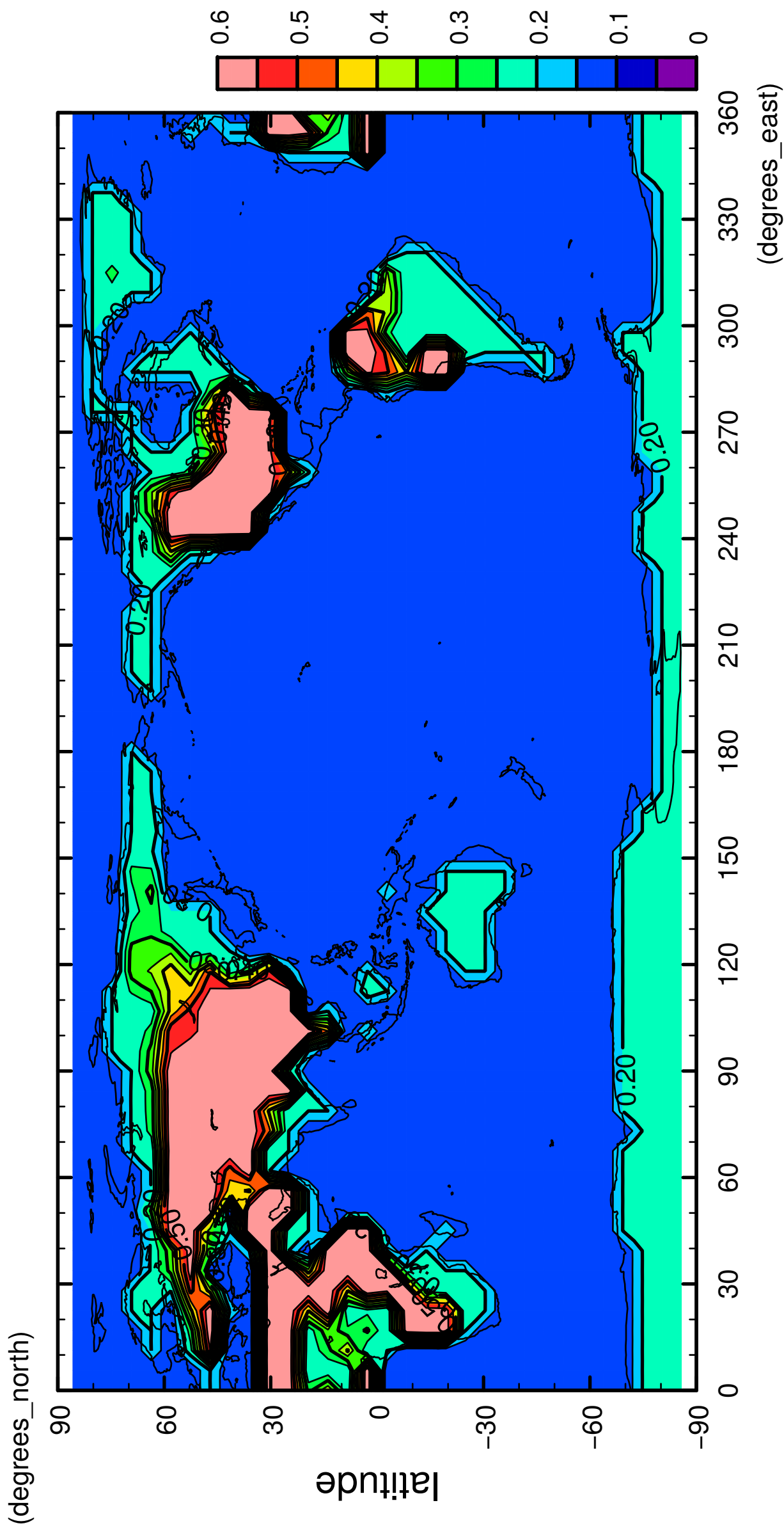
10/12

surface albedo



11/12

surface albedo



longitude

CONTOUR INTERVAL = 5.000E-02

12/12

surface albedo

